



## ARTSPOST Bulletin - 17 June 2026



### Welcome to the latest news and updates from WSA

A very big thank you to Dr Carole Shepherd for both selecting the artists in A Glimpse of Abstraction exhibition and running a panel discussion on this and the works involved. This exhibition consists of 36 artists selected from across the country in Painting and Printmaking. Thank you to the five exhibiting artists who were alongside Carole on the panel. It was great to see so many people at the Openings for all five galleries on Saturday and a large group who stayed for the panel discussion.



### National Youth Art Awards (NYAA):

**7 August - 30 August 2026**

**The National Youth Art Awards** is an annual NZ wide competition that showcases the creative talents of young artists aged 13-25 years old, in 3 age categories. The awards are designed to encourage and celebrate the artistic achievements of students and emerging artists. The competition includes all



visual arts mediums, such as painting, drawing, printmaking, sculpture, and digital art, with different prize levels, including first, merit and category awards. Young artists are invited to submit their work for consideration.

**Entries close on 21 June 2026.**

### **Waiprint**

Annual Waikato printmakers exhibition 8 August - 31 August 2026.

**Details and entry form are now available on our website.**

**Opening:** The opening celebration will be mid-day on Saturday, 8 August, to coincide with the WAIPRINT workshop.

**WAIPRINT Workshop: Repeat Pattern and Tile, Saturday, 8 August** 9.30am - 4.30pm,

WSA Print Room. \$65 for the day, all materials supplied

Guest Artist, Maggie Dawson, will present a workshop introducing novice and experienced printmakers to the mysteries of repeat patterns. You will learn how to create a design that repeats and will carve a small lino tile, printing your design onto washi paper to create a wrapping.

Contact Janice Meadows or Julie Johnstone to register interest in the workshop and to save a place: [waiprint2026@gmail.com](mailto:waiprint2026@gmail.com), [julie@wsa.org.nz](mailto:julie@wsa.org.nz)

### **SPONSOR SPOTLIGHT**

Each month we will feature one of our sponsors to highlight their work and the possible connections you could make through the common purpose of supporting the WSA.



**LONGVELD**

*Longveld is a Hamilton-based engineered metal solutions company, working across public art, dairy, water infrastructure, transport and manufacturing. From our workshop in Frankton, our team turns complex ideas into finished metalwork built for real-world conditions, public spaces and long-term use.*



*Public art is one of the most visible ways our work connects with the community. We work alongside artists, mana whenua, councils, trusts and project partners to translate creative vision into large-scale fabricated works. These projects need careful planning, material knowledge, practical buildability, cultural respect and a shared commitment to the story the artwork carries.*

*Our public art portfolio includes Te Manu Rangimaarie, a 12-metre weathered steel work by Fred Graham at the Piarere roundabout, celebrating heritage, unity, peace and the relationship between ngā hapū o Waikato, the land and*



*Whether we are fabricating a sculpture, a marine component or a food-grade stainless solution, we bring the same focus: collaboration, precision and the courage to create something remarkable.*

### **Pam Roa**

*Pam Roa is Managing Director and co-founder of Longveld, a Hamilton-based manufacturer specialising in engineered metal solutions and well-known for advocacy for vocational trade training. Pam and husband Les have grown Longveld over more than three decades into a multi-disciplinary business across food processing, milk transport, marine, construction and large-scale public art projects.*

*Pam's background is in dairy science and*

*waterways. We also fabricated Rauheia by Peata Larkin for Red Square in Tauranga, a 7-metre work in weathered and stainless steel named in memory of Rauheia, a local tīpuna.*

*Other projects include Te Kahui Tipua, Te Kahui Roko, Te Kahui Takata by Ross Hemera in the Mackenzie Basin, Waka Maumahara by Fred Graham on the Waikato Expressway, and Tōia Mai by Joe Citizen at Ferrybank Reserve in Hamilton. Each work brings together art, place, engineering and story in a way that becomes part of the public environment.*

*Across all our work, Longveld is guided by the idea of moving forward together in one waka.*

*engineering, and with a strong appreciation for the arts Pam has ensured Longveld contributes to art projects that bring creativity, community and engineering together. She sees this work as an important way to connect people with place to build vibrant communities.*

*Pam was named CEO of the Year at the 2024 Waikato Business Awards.*



---

### **Annual WSA Members' Exhibition**

Annual WSA members exhibition **entries close 7 September 2026**. The exhibition runs from **5 October - 25 October 2026**. Limit 2 entries per member. Entry fee \$20 or \$30 for 2 entries. This will be a selected exhibition so photos will be needed with your entry. Opening event 10 Oct, 3pm - 5pm.

**Details and entry form are now available on our website.**

### **Artspost HOURS**

Mondays - Fridays: 9.00am - 5.00pm

Saturdays: 9.00am - 3.00pm

CLOSED most Sundays: Open 11.00am - 2.00pm on a Sunday following an exhibition opening

# Current exhibitions

Running until 4 July 2026



Sue Burnett & Class  
**Watercolours from the Basemen**

Opening:  
June 13<sup>th</sup> @ 1pm

Exhibiting: June 13 - July 04

artsp

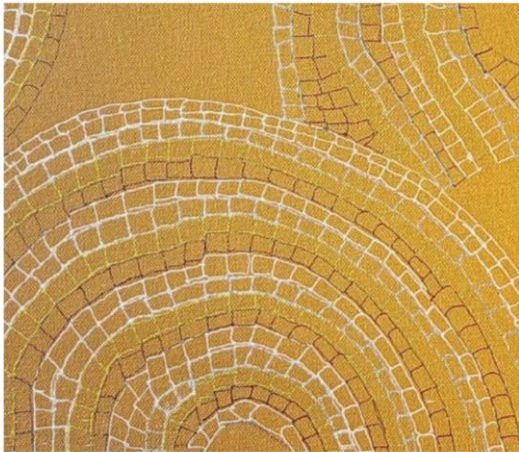


Martin Nečas  
**Journeys Through Watercolour Landscapes**

Opening:  
June 13<sup>th</sup> @ 1pm

Exhibiting: June 13 - July 04

artsp



Grey St Studios and Friends  
**From Grey Street Studio**

Opening:  
June 13<sup>th</sup> @ 1pm

Exhibiting: June 13 - July 04

artsp



Rebecca Hinemoa-Smith  
**connect**

Opening:  
June 13<sup>th</sup> @ 1pm

Exhibiting: June 13 - July 04

artspost

# A GLIMPSE OF ABSTRACTION

Susan Dunster  
Cap Jacobs  
Emma Davie  
Mark Soltero  
Janet Mazenier  
Leah Hartley  
Joslyn Hobbis  
Merthyr Ruxton  
Kelly Rowe  
Holly Thomas  
Sean Hill  
Kylie Wardlaw

Jon Tootill  
Hamish  
Oakley-Browne  
Angela Amerigo  
Cara Fotofili  
Hollie O'Neill  
Jessica Douglas  
Kate Serebrianskaia  
Faye Norman  
David Brown  
Katie Battersby  
Antony Densham  
Deborah Moss  
Vanessa Narbey

Morag Stokes  
Mark Graver R  
Beth Charles  
Jen Richardso  
Kate Cox  
Ying Lim  
Maree Wilson  
Glen Armstron  
Jen Stewart  
Susan Thomas  
Kate Bedford  
Marion Bright

---

**Next Members' Event - 4th July: 1.00 - 2.30pm**

Artist talks by exhibiting artists: Martin Nečas & Rebecca Hinemoa-Smith

## Upcoming workshop

### Acrylic Painting: with Rosanne Croucher

**When:** Saturday 4th  
July, 1:00pm – 4:00pm

**Where:** Studio 2, Artspost

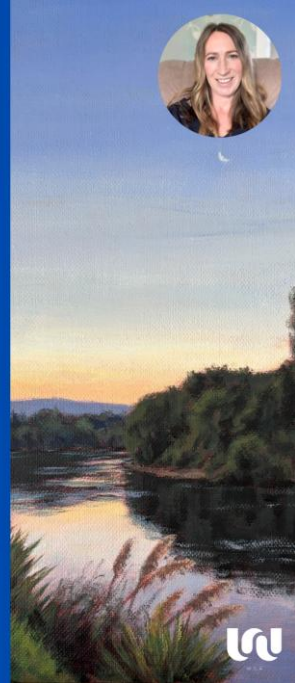
**Price:** \$85.00

### Acrylic Painting Workshop

July 4th  
1pm - 4pm  
\$85.00



Learn how to paint beautiful and realistic landscapes with acrylic paint! For beginners only, this workshop is tutored by Rosanne Croucher.



## ART SCHOOL - July Holiday Programme

### July Art School Holiday Program

*Enrol your child today!*

July  
6<sup>th</sup> – 17<sup>th</sup>

Ages 5 - 16  
9am -12pm

Visit website  
to view the full  
timetable.  
[wsa.org.nz](http://wsa.org.nz)



### JULY SCHOOL HOLIDAY PROGRAM

CLAY - WEEK 1

Monday 6th July  
Monster Mugs

Tuesday 7th July  
Tic-Tac-Toe Games

Wednesday 8<sup>th</sup> July  
Plant Pots & Stationary  
Holders

Thursday 9th July  
Sculpt Your Pet!



More Information  
07 839 4481

Visit Our Website  
[wsa.org.nz](http://wsa.org.nz)

BOOK NOW

| Mondays   | Tuesdays   | Wednesdays  | Thursdays  | Fridays   |
|---|--|---|--|---|
| <b>Monster Mugs Holiday Program</b><br>9:00 am - 12:00 pm<br>08 Jul - 09 Jul<br>8 seats remaining                             | <b>Creative Tap-Tap-Tap Holiday Program</b><br>9:00 am - 12:00 pm<br>07 Jul - 07 Jul<br>10 seats remaining               | <b>Plant Pots and Stationery Holiday Program</b><br>9:00 am - 12:00 pm<br>08 Jul - 08 Jul<br>10 seats remaining               | <b>Ceramic Kake Holiday Program</b><br>9:00 am - 12:00 pm<br>08 Jul - 08 Jul<br>10 seats remaining                     | <b>Sculpt Your Pals Holiday Program</b><br>9:00 am - 12:00 pm<br>09 Jul - 09 Jul<br>8 seats remaining |
| <b>School Holiday Program - Water-Creates, All and Beeswax</b><br>9:00 am - 12:00 pm<br>08 Jul - 08 Jul<br>10 seats remaining | <b>Scratch Art and Aquarelle Painting Holiday Program</b><br>9:00 am - 12:00 pm<br>14 Jul - 14 Jul<br>10 seats remaining | <b>Watercolor Creators and NZ City College Holiday Program</b><br>9:00 am - 12:00 pm<br>08 Jul - 08 Jul<br>10 seats remaining | <b>3D Cake Slices and Peg Snaps Art Holiday Program</b><br>9:00 am - 12:00 pm<br>08 Jul - 08 Jul<br>10 seats remaining | <b>Craft Holiday program</b><br>9:00 am - 12:00 pm<br>07 Jul - 07 Jul<br>10 seats remaining           |

## Print Lab workshop for Teens

July School Holiday Workshop

July 8th &/or 15th  
9am - 12pm

Ages 13-18

Explore printmaking, learning mono-type techniques and how to use a press. Enrol in week 2 and learn further techniques.

Visit [wsa.org.nz](http://wsa.org.nz) to view the full timetable.





# ART SCHOOL - 4 week classes Term 3

## Abstract Painting

Term 2

4 Week Course with Joslyn Hobbis

\$110



WSA Studio 2  
9:30am - 12:00pm  
July 28 - Aug 18

## JOIN OUR TEXTILE CLASS



WEDNESDAY TEXTILES 10-14 YEARS

27<sup>TH</sup> AUGUST - 16<sup>TH</sup> SEPTEMBER  
4PM - 5.30PM

\$90.00

Textile art with a focus on embroidery techniques

Ph 07 839 4481      [wsa@wsa.org.nz](mailto:wsa@wsa.org.nz)

All term 3 enrolment spaces are now open.



## **PRINT LAB**

### **4 week workshop for Teens**

Explore printmaking with a new technique each week: Mono-printing (one-off prints), layering colour, using texture and found materials. Perfect for beginners or creative teens - keen to get creative and try something new.

**27 Aug - 17 Sept**  
4pm - 6pm  
\$105.00



Book Now:  
wsa.org.nz 07 839 4481

We have workshops, 4 and 8 week courses and the July School Holiday programme ready for your enrolment.

The earlier you enrol, the earlier we can confirm the class numbers for these to go ahead, so please don't delay.

**[wsa.org.nz](http://wsa.org.nz)**

---

## **Upcoming exhibitions @ WSA**

**7 July - 01 August 2026**

**Aggregate by Jacqueline Aust**

**The Painter and the Glassmaker by Jennie de Groot & Di Tocker**

**Scrap Metal by Charlotte Waugh**

**Seven Voices on Canvas by WSA's Monday Painting Group**

---

## **WSA Tutor Profiles**

## Monica Peters

Monica Peters is an artist, writer, illustrator and facilitator whose work sits at the intersection of art, environment, storytelling, and community. She has been creating handmade books for more than 25 years, often while travelling and using whatever materials were available at the time. Her books range from travel journals and botanical studies to artist's books incorporating writing, drawing, photography, collage, and collected ephemera. Monica holds a Master of Arts in European Fine Art from the Winchester School of Art in the United Kingdom and has been an Artist in Residence at both the Chicago Centre for Book and Paper Arts and the Lowick House Printmaking Workshop in the UK.

Alongside her creative practice, Monica works across community arts, conservation, and education. She recently developed The Understory Project, a Waiheke-based exhibition and creative programme exploring connections between people and nature, and facilitates workshops that encourage curiosity, experimentation, and creative exploration.



## Hamish Sutherland

Hello I'm Hamish! I am a third year Bachelors of Contemporary Art student at Wintec.

I work mostly with 2D Animations and Comics, anything that has a story to be told!

I have a lot of experience working with digital and traditional animation techniques alongside storyboarding for picture books with a big focus on colours.

## WSA Sponsors - with thanks!

**Please support these local businesses who do so much for the community.**



Creative  
Waikato



SIMON &  
ANNA LOU



SURGEONS4HEALTH

QUESTED  
FAMILY

## Ruth & Lester Davey Bequest



W.S.A

[wsa.org.nz](http://wsa.org.nz)

[wsa@wsa.org.nz](mailto:wsa@wsa.org.nz)

Instagram: @artwaikato

Facebook: <https://www.facebook.com/WaikatoSocietyofArts/>

*Copyright (C) 2026 Waikato Society of Arts. All rights reserved.*

You are receiving this email because you are a member of the Waikato Society of Arts.

Our mailing address is:

Waikato Society of Arts 120 Victoria Street Hamilton Central Hamilton Central, Waikato 3204 New Zealand

Want to change how you receive these emails?  
You can [update your preferences](#) or [unsubscribe](#)

