



Art Connections

WAIKATO SOCIETY OF ARTS

PO Box 1018 Hamilton 3240 www.wsa.org.nz

Welcome to the October 2022 Newsletter

Tēnā tātou

The annual Members exhibition opening was held on September 8th. This was well attended and an enjoyable evening by all. Thank you to our amazing team of volunteers who unpacked, curated, served drinks and prepared the food. Hilary Batt-Ramage, along with Elane Wiseley and Margie Lucas unpacked and curated the exhibition. This is always a big task, with the amount of works to be hung together. They have done a fantastic job in all three galleries. Sue, Libby, Ada, Janice, Malcolm, Sue and Mike Roots all helped on the night and as always made the evening seamless and pleasant for everyone who came through. Thank you to the WSA Chair, Rachael Hayton for opening the exhibition. Don't forget to vote for the People's Choice Award before the exhibition comes down at ArtsPost on October 10th. If you would like to volunteer to help pack up the exhibition, we will be doing this on October 11th at 10am, in the ArtsPost galleries. Please contact the office as many hands make light work. It's a great way to meet others and learn what goes on behind the scenes of an exhibition and it's especially good to understand why we ask you to label and wrap your work well. Our next exhibition at ArtsPost will be the annual Waikato Printmakers (WAIPRINT) with guest artist Steph McLellan. The opening for this is October 13th at 5.30pm. Make sure to come along and support our local artists, this exhibition is always stunning.

We are now in our term break and looking forward to the School Holiday Programmes beginning. Along with our popular 5-12 year old sessions run by Paulette, we also offer a 12-17 year Sculpture and 3D Character Design workshop over four days. This is the second term Anya has run this and due to this success we are looking at more we can include for this age group. Keep watching our Art School site for developments. We also sell take home Art Packs for all ages and levels in the WSA office, these are great any time or if you have the school holidays to fill in.

Our class fees have gone up slightly to cover rising operating costs and to make sure our tutors are being paid what they deserve to be paid. This also recognises their commitment and the uncertainty that comes with classes only running term by term, dependant on minimum numbers. Our tutors have spent many years training and learning their profession, which also involves working odd hours, tutoring groups with different skill levels, varying ages and a lot of preparation before each class. We have been grateful to have tutors who put the Society and Art School first and invest so much time into their students, they are always willing to adapt as the need arises and are the reason why we often have waiting lists for classes. I'm sure you will agree the breakdown of the hourly fee for a class is a small amount extra to pay for quality classes. To help cover this and demand, we are converting the office into another art studio, in particular for the children's after school classes. The office will move into the Next Level Gallery, where we will still display student's art but not formal exhibitions. This will now be hosted in a new gallery in the CBD due to open in November 2022. More on this will follow and proposals will be asked for, to exhibit there. We will also have the ability to host the new Small Sculpture Award, the National Youth Art Awards and WAIPRINT in 2023, in this new space. This will save on exhibition hire fees and lost commission to another gallery. All this benefits the Society and helps towards it becoming more sustainable.

Our Annual General Meeting will be held on October 26th at 6pm in Studio 2 at the WSA. Please come along and see what has been happening in the past 12 months. The Executive will be elected and officers nominated. If you feel you have a special skill set we need or you would like to be part of a volunteer group who helps with exhibitions, working bees, maintenance and all the things that people don't realise goes on to make the Society function then put your hand up or email julie@wsa.org.nz. As members it is great to be involved from time to time, meet other members and artists and contribute to the ongoing success of a Society that has been running now for 98 years.

Heoi anō tāku mō nāianei – That is all for now.
Julie

Term 4 classes

Term 4 art classes start from Monday 17th October. Most classes run for 8 weeks, however we do have a few that do a shorter 6 week term. We have over 45 classes on offer for children and adults. While many of these are already full, we still have spaces in the classes below.

Mondays

Drawing & Painting the Body

(with different mediums each week)

6 weeks

9.30am-11.30am

Beginner Watercolour

(Fortnightly)

5 lessons

1pm-3pm

Evening Contemporary Watercolour

(Fortnightly)

5 lessons

6pm-8pm

Evening Oil Painting

8 weeks

6.30pm-8.30pm

Evening Experimental Printmaking

8 weeks

5.45pm-8.15pm



Tuesdays

Adults Creative Writing

8 weeks

9.30am-11.30am

Morning Experimental Printmaking

8 weeks

9.30am-12pm

Observational Drawing

6 weeks

1pm-3pm

5-9 year olds Art Class

8 weeks

4pm-5.30pm

Creative Expressions

6 weeks

6pm-8pm

Wednesdays

5-9 year olds Art Class

8 weeks

4pm-5.30pm



Enrol online to
secure your place for
term 4 wsa.org.nz

wsa
art
WAIKATO SOCIETY OF ARTS



Term 4 classes

Term 4 art classes start from Monday 17th October. Most classes run for 8 weeks, however we do have a few that do a shorter 6 week term. We have over 45 classes on offer for children and adults. While many of these are already full, we still have spaces in the classes below.

Thursdays

Calligraphy

8 weeks

10am-12pm

Untutored Open Art Class

8 weeks

10am-12pm

Acrylic Painting

8 weeks

12.30pm-2.30pm

Intro into Art History

6 weeks

6.30pm-7.30pm



Fridays

Art Taster

(Try a different medium each week - Watercolour, Pastels, Oil, Acrylic, Drawing, Colour Theory)

6 weeks

9.30am-12pm

Untutored Watercolour

8 weeks

9.30am-11.30am

Drawing & Sketching

8 weeks

1pm-3pm

5-9 year olds Art Class

8 weeks

4pm-5.30pm

5-8 year olds Comic Design Class

8 weeks

4pm-5.30pm

Saturdays

10-13 year olds Art Class

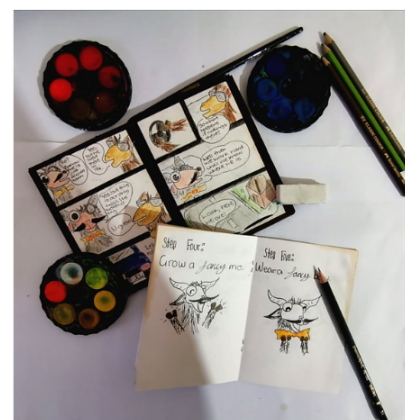
8 weeks

9.30am-11am

Still Life & Botanical Drawing

8 weeks

12pm-2pm



NYAA 2022 Category Winners

The National Youth Art Awards was exhibited at the Wintec gallery space on Alexandra Street, Hamilton. Thank you to all the young artists from throughout Aotearoa who entered and to their teachers, parents and friends, what a massive effort. You should all be extremely proud. All 47 finalists artworks can be viewed on our website.

2022 NYAA category winners:



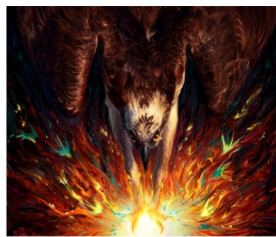
First prize 13-14 years
'Numb'
by Navya Chaudhary



Merit prize 13-14 years
'Camera Sketch'
by Ariel Wu



First prize 15-19 years
'Shady at Midnight' by Jessica Gurnsey



Merit prize 15-19 years
'Thief Of The Sun'
by Charlotte Campbell



First prize 20 - 25 years
'Day 42-48 (Waikato Region)'
by Sarah Adam



Merit prize 20 - 25 years
'It All Comes Back Around'
by Robb Eastman-Densem



Sculpture prize
'Limiting Beliefs'
by Lissa Lee



Print prize 'Whatu' by NyleTuruwhenua



Photography Prize and Overall Award Winner
'Mushroom Motion' by Mia Moon

NYAA 2022 Peoples Choice Award Winner

The People's Choice Award sponsored by Gordon Harris Art Supplies for a \$500 voucher was voted as Leo Reid with Beleaguered Bouquet.



NZPPA 2023

The New Zealand
Painting and Printmaking Awards

NZPPA | wsa art |  **2023**

Entries Open 1st October 2022 – 8th February 2023

Main Prize Printmaking \$15,000
Main Prize Painting: \$15,000

Visit wsa.org.nz

     Ruth Davey Nancy Caiger

New Award 2023

SMALL SCULPTURE AWARD 2023



Entries Close 8th May 2023

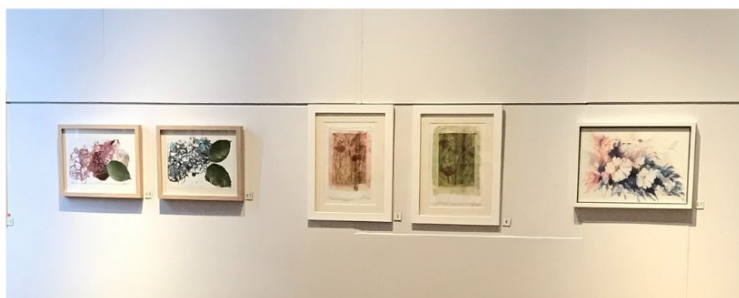
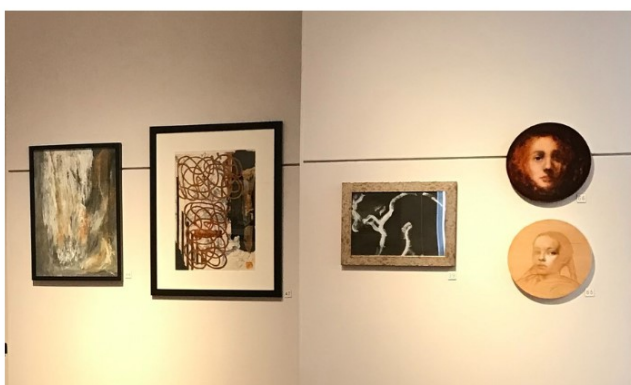
Main Prize \$5,000

Visit wsa.org.nz

   wsa art

ArtsPost Members Exhibition 2022

Currently exhibiting downstairs in ArtsPost Galleries is our annual members exhibition. As expected there is a wonderful variety of art to be seen. The exhibition runs until Monday 10th October. ArtsPost is open 7 days 10am-5pm. Be sure to pop in and have a closer look at the art on display.



5-12 year olds October School Holiday Programme

Enrol online
wsa.org.nz

9am - 12pm

Our school holiday programme has a huge variety of activities on offer for children this October. All materials are provided. The programme is run by our experienced WSA tutors and has limited numbers to give your child a quality experience. \$35 per child per morning, or \$30 if attending 5 mornings or more.

Monday 3rd Oct - Painting Spring Flowers & Clay Modelling

Tuesday 4th Oct - White Pen on Black Paper Artworks & Colourful Tissue Collage Art

Wednesday 5th Oct - Miniature Art Books & Oil Pastel & Dye Artworks

Thursday 6th Oct - Creating, Painting & Decorating Egg Carton Creatures

Friday 7th Oct - Watercolour Painting Pattern Artworks & Folding Paper Creations

Monday 10th Oct - Minimalist Landscape Painting & Clay Creations

Tuesday 11th Oct - Cardboard 3D Creations & a variety of Mandala patterns to try

Wednesday 12th Oct - Drawing Cartoon Characters & Watercolour Creations

Thursday 13th Oct - Painted Collage Artworks & Chalk Pastel Creations

Friday 14th Oct - Coloured Paper Kandinsky Style Art & Watercolour & Pen Artworks



12-17 year olds 3D Sculpture & Character Design - 3rd Oct - 6th Oct (4 mornings)

Want to bring a creature to life these school holidays? Learn how to design and sculpt your own main character! 12-17 year olds will love this programme!

Super Sculpey is a specialised oven-bake polymer clay, often used in the manufacturing of toys, jewellery, and figurines. In this course, you will learn how to design a character and sculpt with this high-quality product. You will also learn how to build a tinfoil and wire base ('armature'), which will reinforce the structure of your creation, so it may survive the distance.

Does your character have three heads or fire spurting from their nostrils? Maybe they have human features or just those of a plain old bunny rabbit. In this class, the world is your oyster (and your character could be too!)

Sculpting with polymer clay is a fun way to relax and let your creativity loose. You can achieve an intricate level of detail, using a variety of tools. Sculpting is immensely helpful for those wanting to improve their drawing skills, as you will begin to understand objects in a 3-dimensional format. It also serves as a steppingstone for those planning to pursue a career in the film industry as creature designers, props makers, stop-motion animators, prosthetic make-up artists and more.



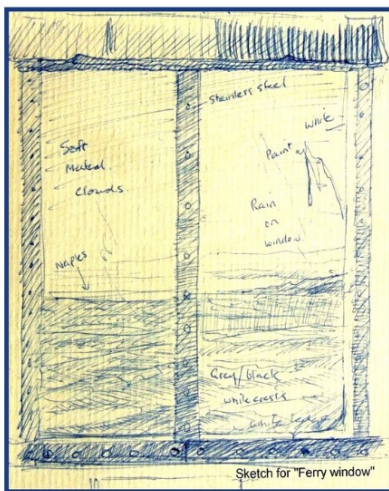


A Storm at Sea 1991... (6)

In 1991 we were on the Aritiki Ferry crossing from Nelson to Wellington to attend a conference. A storm came up so strong the ferry was forced into a cove to wait it out till morning.

It was the turning around mid-ocean which was the tricky part. I believe there was a train on board as well as our cars below.

The boat would rock sideways; bending down so low I could see the green transparency of the waves through the window. Then it would lift to the grey skies above. I was excited and I went to see from the deck. It was closed off but I could see the huge waves rolling past like mountains. It was awesome.



Crockery was heard flying, food was on the house. I got a pie while others just had paper bags. On these occasions, people talk to each other, it could be your last conversation. Staff were kind. I did not feel fear and often wondered about that. I think the Lord must have been close.

We were surprised to find we were heroes in the morning the story of our survival splashed in the news.

I quickly sketched the window I was looking out of and it developed to an oil painting to commemorate.

The cross bar on the window of the ferry looking out is also a cross.



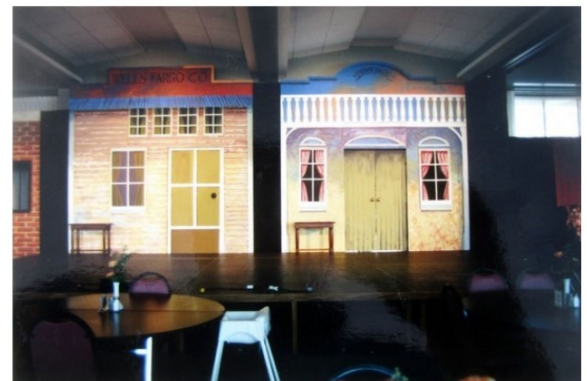
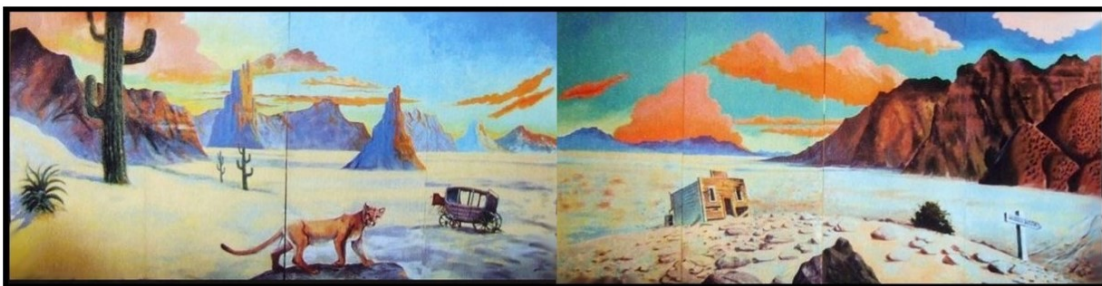


Adventures in America ... (7)

I once worked at a large Salvation Army training college in L.A. There was a "Musical" written and produced by the cadets each year. They were called "Dinner Theatre" because the folk were also treated to a fine meal. These were lavish fundraisers that did well with style.

The cadets were warm, friendly and we easily made friends. I was involved with designing sets for them. The largest backdrop I ever did was 8ft x 32ft long.

It was a desert scene for a Wild West play - "The Legend of Grizzly Gulch"



Next Level Gallery Exhibition Photos

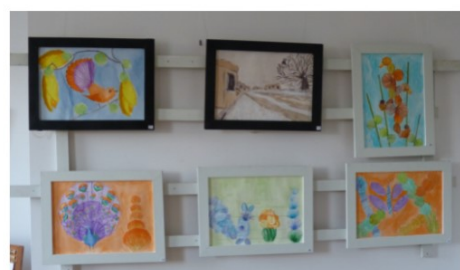
Over the last term we have had a wonderful variety of art on display. Personal exhibitions from WSA tutors Haydn Rive & Sue Burnett, as well as Sue's Monday Watercolour Class. We also had a beautiful display of children's art from Vivien Hendy's 3 classes. Below are a few of the artworks.



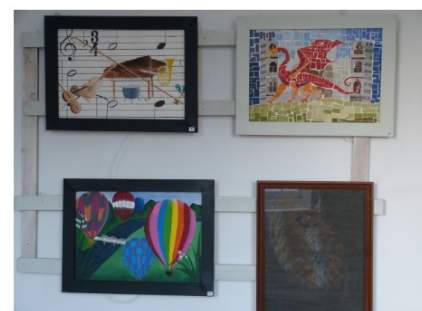
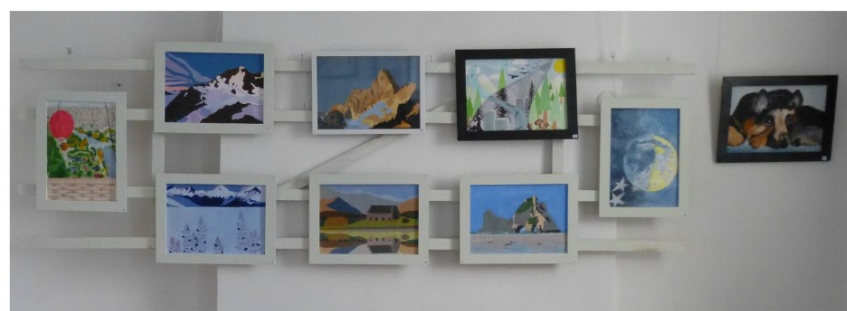
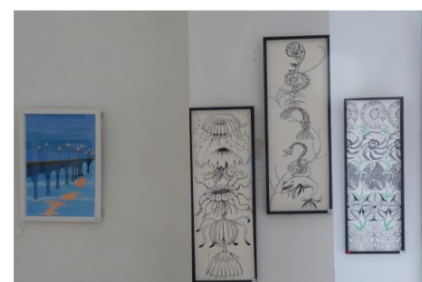
Some of Sue Burnett's
'A Brush with Watercolour'



Some of Haydn Rive's
'Watercolours'



9th Annual Youth Exhibition
by Vivien Hendy's
3 Children's' Art Classes



Exhibitions - Mavis & Co Rototuna Cafe

Recent exhibitions held at Mavis & co Rototuna included Carril Carr's 'Seasons' display of 8 artworks. These can be viewed at the cafe until 11th October. Be sure to pop in for a look and stop and enjoy a coffee and something to eat while you are there.

Exhibitions can also be viewed on our website wsa.org.nz



MAVIS AND CO

café • bar • bistro

Rototuna Shopping
Centre
2/44 Horsham
Downs Road

Exhibitions - Mavis & Co Rototuna Cafe

From 11th October talented printmaker Sue Roots will be exhibiting in the Mavis & Co exhibition space. Make sure to mark this one on your Calendar.



While strolling along the Kirikiriroa Walkway, between Sapper Moore Place and London Street, there are well over 30 native plants to be observed. Some purposefully planted and others have generated naturally.

A sprinkling of these plants are represented as etchings and embossings in this small collection.

Look deeply at what is close by



Etching is my preferred print medium. While there is control over the design, technique and timing, the final result still surprises. My work reflects my view. I look for positivity, beauty, detail, texture and connection.

Grateful thanks to Dan Benfell (Planning Lead for Trees at Hamilton City Council) for his support, enthusiasm, and assistance with the identification of the native plants.



Kirikiriroa Walkway

etchings + embossings

Sue Roots
PRINTMAKER

MAVIS AND CO ROTOTUNA
café - bar - bistro
Exhibition Space



11 October - 22 November 2022

Opening Event 3pm-4:30pm Tuesday 11 October

Waiprint 2022

14 October - 14 November

ArtsPost

The annual exhibition by the printmakers of the WSA is coming soon to ArtsPost. We hope to see a good turnout of members for the opening on Thursday, 13 Oct. Printmakers will be pleased to know that we're back in our usual two rooms so there's plenty of space for two entries each.

'Box of Birds'

Our guest artist this year is Stephanie McLellan, well known in these parts for her beautiful etchings. Her part of the WAIPRINT exhibition is called 'Box of Birds' and focuses on New Zealand birds. It will include not only her delicately toned aquatints but also more graphic images rendered in linocut.



The credit for the image is
Ruru, etching and aquatint, Stephanie McLellan, 2022

Key Dates for your Diary

- All works to be delivered to the WSA office no later than Monday, 10 October
- WAIPRINT 2022 opens at ArtsPost Thursday, 13 October



Workshop: Monotype with Stencils

Steph's WAIPRINT workshop will be an opportunity explore various forms of monotype, especially using stencils, and will be suitable for both novices and experienced printmakers.

·Saturday, 29 October, 9.30-4.00

- WSA Print Room
- Most materials supplied, BYO lunch
- \$70 for the day**

If you're intrigued, register your interest with an email to Julie wsa@wsa.org.nz and we'll be sure to keep you in the loop. No obligation, but numbers are limited and spaces will be offered to people in the order that they register.

Workshops

We have two workshops on offer in October and November. Past WSA tutor Susannah Salter is running an exciting workshop 'Beyond the Brush' using Mixed Media. This workshop will be great to help you loosen up and experiment with several techniques and mediums.

For those wanting to learn watercolour, WSA tutor Paulette Bruns is holding a beginner Watercolour Workshop with all materials included. **Enrol online at wsa.org.nz**



BEYOND THE BRUSH

Sunday 13 November 2022

10-3

Waikato Society of Arts

Would you like to loosen up and try new things?

This workshop breaks all the rules and helps you to abstract your art.

Have fun with mixed media from watercolour to crayons and natural dye. We explore materials in the morning; mark making, surfaces and, above all - playing. The afternoon session is dedicated to making a series of connected artworks with these new techniques and freedoms.

I will share my tools and some of my favourite materials, and feel free to bring your art materials too, especially the neglected ones :-)

Light refreshments provided. Explore Victoria Street for lunch options.

Email me at susannahsalter@gmail.com to book.

Susannah Salter
02108481652
www.susannahsalter.com



Beginner Watercolour Workshop

Join WSA Watercolour Tutor Paulette Bruns for a day of learning the basic skills needed to get started in Watercolour. In this 'hands on' workshop you will make some test examples as well as create a small step by step painting.

10am - 3pm

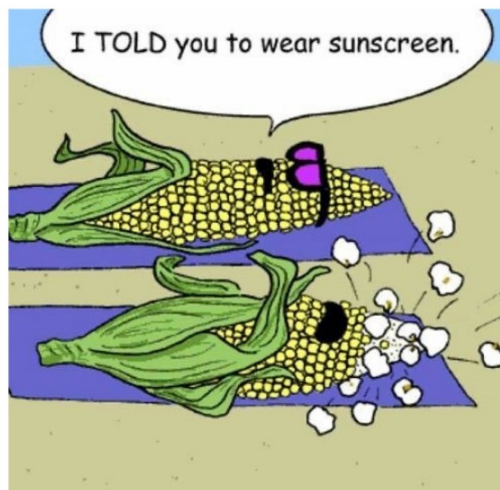
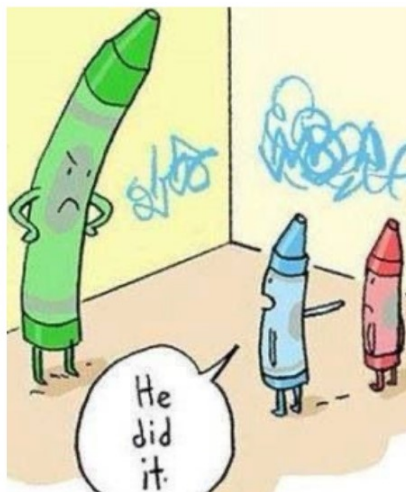
Sunday 31st October

Enrol online at wsa.org.nz

Light refreshments and all materials included



Funnies



Calendar of Events and Exhibitions



2022

ArtsPost Members Exhibition Friday 9th September -10th October

Term 3 Ends Saturday 1st October

October School Holiday Programme Monday 3rd October - Friday 14th Oct

Waiprint Exhibition Opening Thursday 13th October - 5.30pm

Waiprint Exhibition - ArtsPost Friday 14th October- 14th November

Term 4 Starts Monday 17th October

Labour Weekend Saturday Saturday 22nd October (no classes)

Labour Day Monday 24th October (no classes)

Term 4 Ends Saturday 17th December

Office Closes Tuesday 20th December

2023

Office Opens Wednesday 18th January

January School Holiday Programme Monday 23rd January - Friday 27th January

Auckland Anniversary Day Monday 30th January (no classes)

January School Holiday Programme Tuesday 31st January - Friday 3rd February

Term 1 Starts Friday 10th February

NEXT LEVEL GALLERY

Sue Burnett 'A Brush with Watercolour' Exhibition 7th September - 5th October

Ellie Lee-Duncan Exhibition 6th October - 2nd November

WSA EXHIBITION SPACE

MAVIS & CO CAFE', BISTRO & BAR ROTOTUNA

Rototuna Shopping Centre
2/44 Horsham Downs Road

Sue Roots Exhibition 11th October - 22nd November

Amanda Talsma-Williams Exhibition 22nd November - 18th January

Rachael Hayton Exhibition 18th January - 28th March

Elane Wisely Exhibition 28th March - 2nd May

Help us thrive!

Join **CommUnity** and choose us as
your **CommUnity Group** to support.

CommUnity
turning commerce
into community

www.comm-unity.kiwi

Sponsors

We would like to thank our sponsors for their support of the WSA.



CREATIVE WAIKATO | AUAHA TAINUI



Hamilton City



Caiger Charitable Trust



Susie & Clifford Allen





20%^{off}

NEW

da Vinci

MADE IN GERMANY

COLINEO

KOLINSKY SABLE SYNTHETIC FIBRE

Online & In-store NOW
386 Anglesea Street, Hamilton
www.gordonharris.co.nz

Gordon Harris
THE ART & GRAPHIC STORE

FROM THE EDITOR - PAULETTE BRUNS

A very special thanks to SHARP, who continue to help us substantially with printing.

SHARP
Be Original.

NEWSLETTER ADVERTISING

While we support local artists, we always endeavour to promote our school classes, workshops and WSA activities first. If you have an article for our newsletter, please send this in. One of the perks of membership is to advertise, for free, something of your work or upcoming exhibitions up to 50 words, without enlargement or photos. These are approved by WSA before going to print.

WSA OFFICE AND ART SCHOOL

120 Victoria Street (above ArtsPost Gallery)
PO Box 1018, Hamilton 3204
07 839 4481

Office Hours:

Mon-Fri 8.30am-4pm
Sat 9.30am-12.30pm

(these may vary, please check in advance)

artschool@wsa.org.nz for art school enquiries (Paulette)

wsa@wsa.org.nz for all WSA enquiries (Julie)

Website: www.wsa.org.nz

(Paulette works in the office 22 hours per week, if you need a faster reply please include Julie's email)

WSA EXECUTIVE COMMITTEE

Patron: Joan Fear

Committee: Michelle O'Brien
Nicolas Wells
Melany Sutherland
Gemma Reid

Treasurer & Chair: Rachael Hayton
Hon. Solicitor: Charlotte Isaac
Hon. Secretary: Julie Johnstone