



Art Connections

WAIKATO SOCIETY OF ARTS

PO Box 1018 Hamilton 3240 www.wsa.org.nz

Welcome, haere mai to the Waikato Society of Arts, Term 3 Newsletter.

Matariki marks the start of the Māori New Year. Signified by the Matariki cluster of stars reappearing in our night sky, this is a time to reflect on the past year, celebrate the present, and plan for the year ahead. As part of this celebration, four of our children's classes currently have an exhibition in our Next Level Gallery recognising Matariki and how they see this significant celebration. The care and effort that has gone in to their work is commendable and a delight to see, please come and take a look.

Our Art School, term 2 is coming to a close and the two week July School Holiday Programme, run by experienced WSA tutor Paulette Bruns, for 5 to 12 year olds is filling up quickly. In addition to this, 13 to 17 year olds can participate in a workshop on Sculpture and 3D Character Design over 4 days. This is being run by our talented tutor Anya Gladstone-Gallagher. We also have a one off morning where we are running a programme for 19 children from the Nepal New Zealand Waikato Friendship Society (NNZWFS). We are excited to have this new connection in the community and hope we can learn more from each other.

We are donating materials that we no longer use in our programmes to another July school holiday project, for 30 children and 10 volunteers, being run by the Refugee Orientation Centre. If you have any paints, paper, brushes or craft items you no longer need please drop these into the WSA by July 13th and we will deliver these to the group in one lot.

The 2022 National Youth Art Awards entries have closed and again we saw a record number of young artists enter from throughout Aotearoa. The reach of this award is expanding and it is exciting to see the depth of skill we have in all regions, from individuals, schools and tertiary institutes. The effort and encouragement that comes from parents and teachers is fantastic. From the 295 entries received, Judges, Helen Dowling and Daron Parton have chosen 47 finalists. The Opening and Awards evening will be held on the 4th of August at 5.30pm at the Wintec X block gallery on Alexandra Street. This partnership with Wintec allows us to pass more of the sale proceeds on to the artists, which is another benefit for them. Thanks to our incredible sponsors, this award is now in its thirteenth year and is not looking back. Please come along and support these artists and share in their pride and excitement of having their work exhibited alongside their peers, in a gallery.

We are currently calling for entries into our annual Members exhibition held in the ArtsPost galleries. This will be a selected exhibition with a maximum of 100 works being displayed. Entries close on the 11th of August and the Opening will be held at 5.30pm on the 8th of September.

While you're out and about in Hamilton, make sure you take some time to visit Mavis and co at Rototuna and see the beautiful art on display from some extremely talented members. This is another avenue for these artists to sell their work, gain exposure and keep a much higher percentage of their sales to put back into their art careers. Support our local Waikato artists and as members you are continuing the WSA's vision of 'Fostering creativity and growth of visual arts'.

The Executive have some exciting projects in the pipeline, as they are finalised we are looking forward to sharing these with the membership, students, exhibitors and friends of the Society. The AGM will be held on the 26th of October at 6pm, at the WSA. Further details will be emailed.

Stay warm, keep well over these colder months and we look forward to seeing you all at our upcoming events.

Heoi anō tāku mō nāianeī

Term 3 Classes

We have spaces available in the classes below. Enrol quick to secure your place. For more information on each class or to enrol, go to our website below.

wsa.org.nz

Monday

Drawing & Painting the Body
9.30am-11.30am



Observational Drawing
4pm-6pm



Evening Oil Painting
6.30pm-8.30pm



Experimental Printmaking
5.45pm-8.15pm



Evening Contemporary
Watercolour Class - Continuers
6pm-7.30pm - Fortnightly

Tuesday

Oil Painting
9.30am-12pm



Creative Writing 8-11 years
4pm-5pm



10-14 years Art Class
6pm-7.30pm



wsa
art
WAIKATO SOCIETY OF ARTS

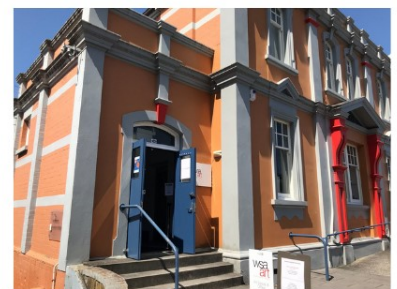


Wednesday

Acrylics
9.30am-11.30am



Monthly Life Drawing
Untutored
6.30pm-8.30pm
(27th July & 24th August)



Small Class Sizes
8 Students Maximum
Quality Teaching

Term 3 Classes - Starting from 25th July - 9 weeks

We have spaces available in the classes below. Enrol quick to secure your place. For more information on each class or to enrol, go to our website below.

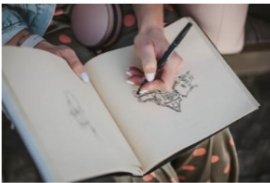
wsa.org.nz

Thursday

Untutored Open Art Class
10am-12pm



Observational Drawing
10am-12pm



Acrylic Painting
12.30pm-2.30pm



NCEA Art Tutoring
4pm-6pm



Art History
6.30pm -7.30pm



Friday

Art Taster
9.30am-12pm



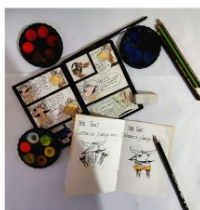
Untutored Watercolour
9.30am-11.30am



Drawing & Sketching
1pm-3pm

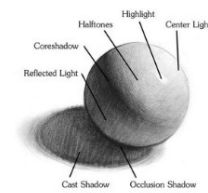


5-8 years Comic Design
4pm -5.30pm



Saturday

8-12 years Foundation Drawing
9.30am-11am



10-13 years Art
9.30am-11am



5-9 years Late Morning Art
11.30am-12.30pm



Still Life & Botanical Drawings
12pm-2pm



Small Class Sizes
8 Students Maximum
Quality Teaching

Waiprint 2022

14 October - 14 November

ArtsPost

The annual exhibition by the printmakers of the WSA is coming soon to ArtsPost. We hope to see a good turnout of members for the opening on Thursday, 13 Oct. Printmakers will be pleased to know that we're back in our usual two rooms so there's plenty of space for two entries each. See the instructions/entry form is available in the Print Room, the office, the website (<https://wsa.org.nz/events/>) and in this newsletter.

'Box of Birds'

Our guest artist this year is Stephanie McLellan, well known in these parts for her beautiful etchings. Her part of the WAIPRINT exhibition is called 'Box of Birds' and focuses on New Zealand birds. It will include not only her delicately toned aquatints but also more graphic images rendered in linocut.



The credit for the image is
Ruru, etching and aquatint, Stephanie McLellan, 2022

Key Dates for your Diary.

- Entry forms and fees to the WSA office by Wednesday, 21 September
- All works to be delivered to the WSA office no later than Monday, 10 October
- WAIPRINT 2022 opens at ArtsPost Thursday, 13 October



Workshop: Monotype with Stencils

Steph's WAIPRINT workshop will be an opportunity explore various forms of monotype, especially using stencils, and will be suitable for both novices and experienced printmakers.

·Saturday, 29 October, 9.30-4.00

- WSA Print Room
- Most materials supplied, BYO lunch
- \$70 for the day**

If you're intrigued, register your interest with an email to Julie wsa@wsa.org.nz and we'll be sure to keep you in the loop. No obligation, but numbers are limited and spaces will be offered to people in the order that they register.

NYAA 2022

This years NYAA received 295 entries with 47 finalists chosen from the Judges, Helen Dowling and Daron Parton. Thank you to all the artists, parents, family, friends and teachers who encouraged these young people to enter this year. A huge thank you to our Judges for the time and care they took to make their selections.

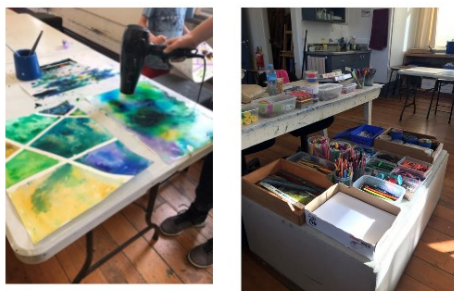


Opening 4 August at 5.30pm
Exhibition runs to 28 August

Wintec X block gallery on Alexandra Street

July School Holiday Programme

We have 2 school holiday programmes on offer this July. Our regular 5-12 year old art holiday programme runs from 9am -12 pm each weekday morning. There are only a few spaces left.



We also have an exciting programme for 13-17 years olds run by talented WSA tutor Anya Gladstone-Gallagher. This 4 day morning programme is creating Sculpture and 3D Character Design. All materials are included.

Both of these programmes are available on our website for enrolments wsa.org.nz

13-17 year olds

SCULPTURE AND 3D CHARACTER DESIGN

July School Holiday Programme



Want to bring a creature to life these school holidays? Learn how to design and sculpt your own main character!

Super Sculpey is a specialised oven-bake polymer clay, often used in the manufacturing of toys, jewellery, and figurines. In this course, you will learn how to design a character and sculpt with this high-quality product

You will also learn how to build a tinfoil and wire base ('armature'), which will reinforce the structure of your creation, so it may survive the distance.

Does your character have three heads or fire spurting from their nostrils? Maybe they have human features or just those of a plain old bunny rabbit. In this class, the world is your oyster (and your character could be too!)

Sculpting with polymer clay is a fun way to relax and let your creativity loose. You can achieve an intricate level of detail, using a variety of tools. Sculpting is immensely helpful for those wanting to improve their drawing skills, as you will begin to understand objects in a 3-dimensional format. It also serves as a steppingstone for those planning to pursue a career in the film industry as creature designers, props makers, stop-motion animators, prosthetic make-up artists and more.

11th to 14th July (Mon - Thur)

9am 12pm



enrol online
wsa.org.nz

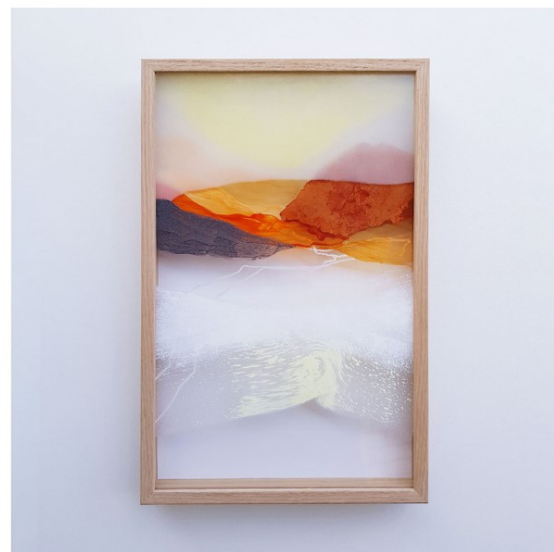
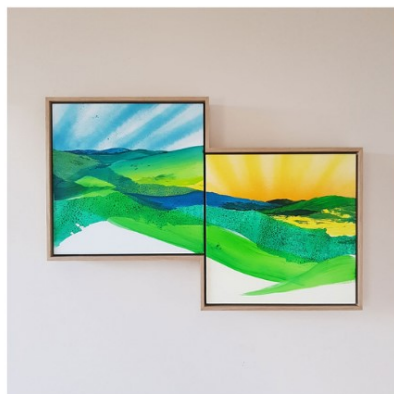
\$199
 inc all materials

Mavis & Co Rototuna - WSA Exhibition Space

Bedrock: by Kate Symmans

14th June - 19th July

Currently on display is a beautiful selection of art by WSA tutor Kate Symmans.

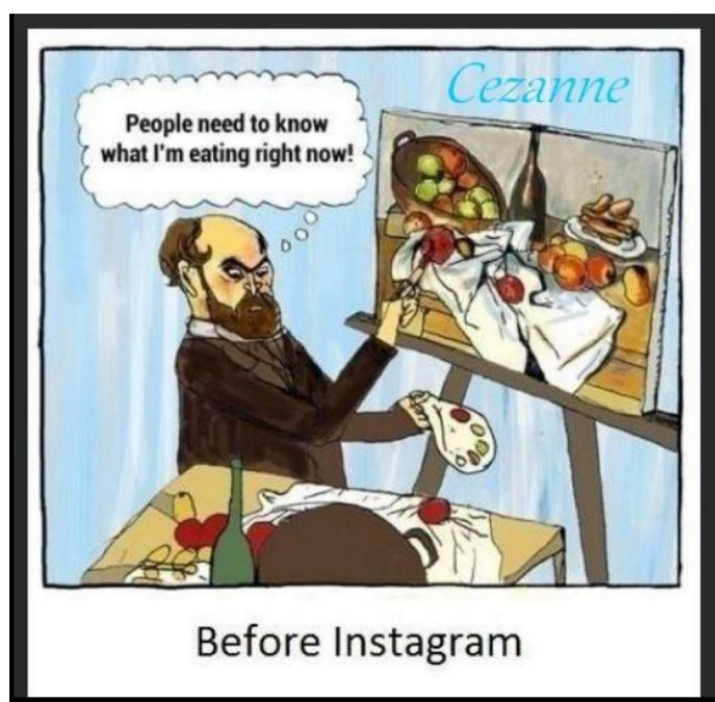


MAVIS AND CO

café • bar • bistro

Rototuna Shopping Centre
2/44 Horsham Downs Road

Funnies



Note to Self:

Do not sit on the floor
without a plan on how to
get back up.

Mavis & Co Rototuna - WSA Exhibition Space

No Bull: Geoff McGowan

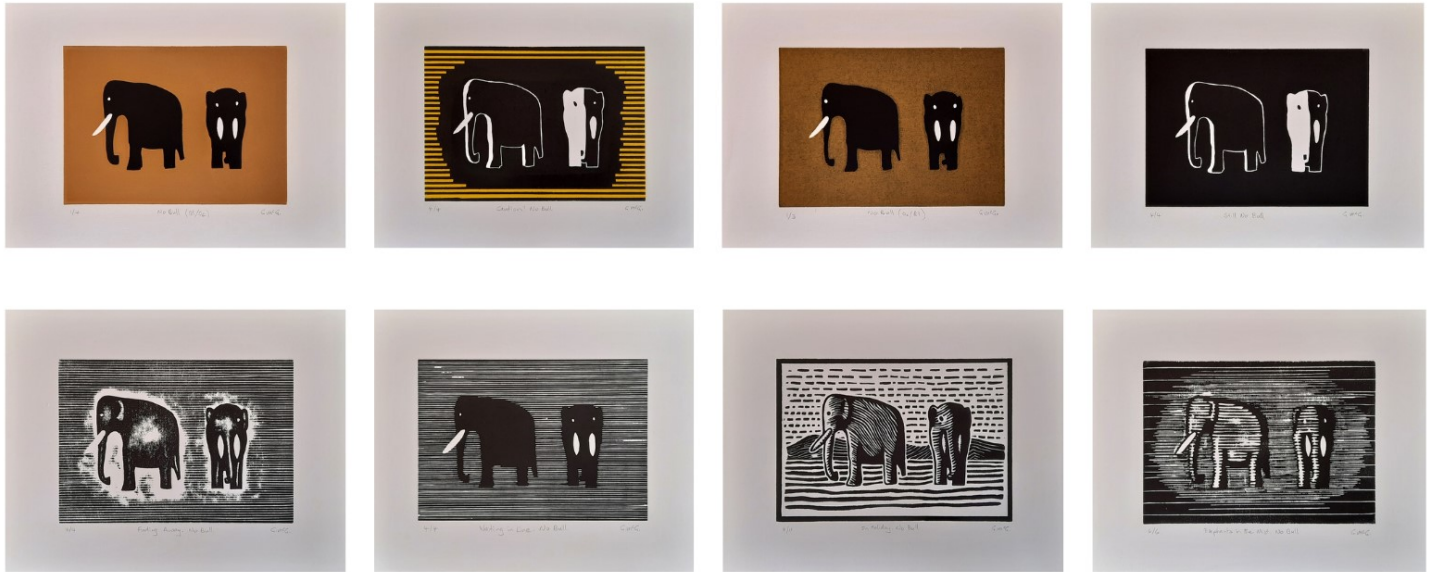
19th July - 30th August

Make sure you pop into Mavis & Co Rototuna to see a selection of stunning prints by WSA member Geoff McGowan.

MAVIS AND CO

café • bar • bistro

Rototuna Shopping Centre
2/44 Horsham Downs Road



I began attending print making classes at the WSA two years ago, just after the first Covid lockdown. The environment there has been very encouraging, and despite minimal previous artistic experience I've already had two works accepted for the New Zealand Painting and Printmaking Awards.

This series of prints was started in August last year, exploring different ways of printing an image of two wooden ornaments, which I think were a wedding gift to my parents in the 60's.

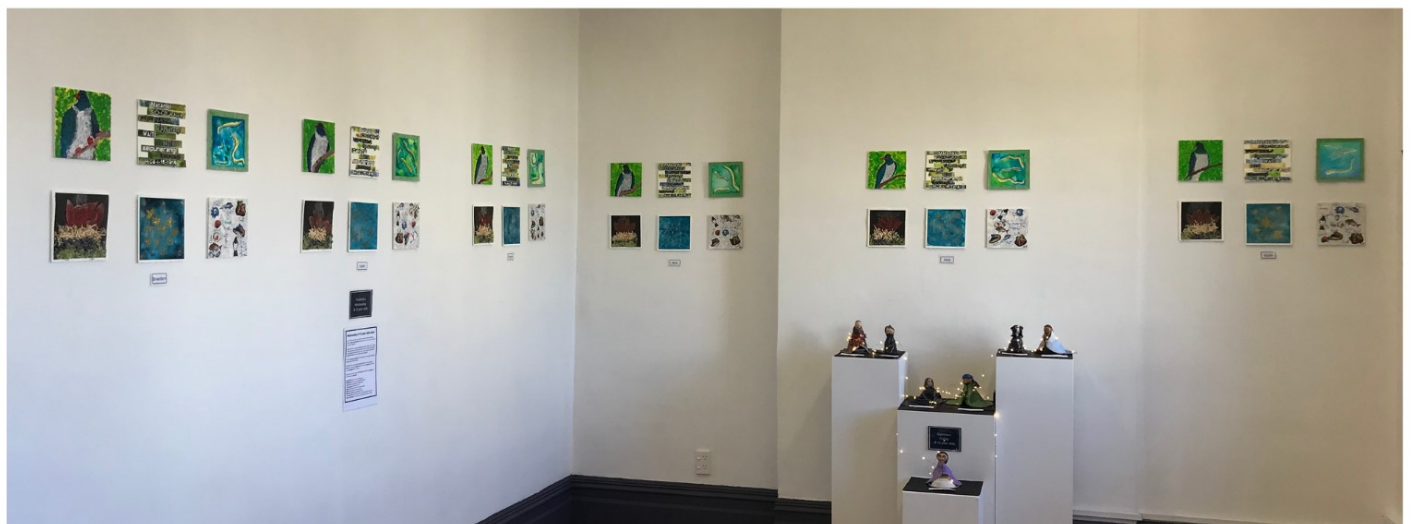
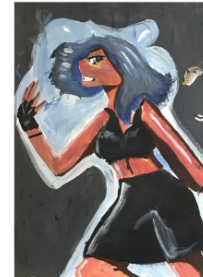
In the first print the elephants (in black) are printed on top of the background colour (yellow ochre); in the second the background is printed on top of the elephant colour. The third uses line and light to enable a single colour print; then, moving towards an engraving style, large lines were used in the background – which looked a bit like warning tape, so a little yellow was added! The fifth print was a poor attempt to imitate a technique used by Escher in one of his early wood block portraits, with parallel lines of varying thickness used to indicate depth and shade, rather than object outline. The sixth returned to the style of an engraved postage stamp background, using close, narrower lines, which unfortunately are a bit fragile on MDF board. The seventh added depth to the cutting of the elephant and its surround, in an unsuccessful attempt to introduce tone, as can be done in a wood engraving. The eighth print again imitates a postage stamp style, this time applied to a whole scene. The “no bull” text, common to the title of each of these prints, refers to the absence of an impressive male elephant. But it is also a reflection on the separation of family members – particularly immigrant family members – caused by New Zealand’s closed borders, which were shut while these prints were being made.

Geoff McGowan, 26th May 2022

Next Level Gallery - Children's Matariki Exhibition

23rd June - 13th July

Currently on display is a stunning exhibition from four of our children's classes. This is their interpretation of Matariki and what it stands for. Be sure to pop into the gallery to view these and to support our next generation of artists.



Next Level Gallery

Trista Xiang - 'Asymmetry of Emotions'

14th July - 27th July

This is my first solo debut. Most of my previous paintings were dramatic figures and ethnic minorities with a strong Chinese flavor. The human body has been a new subject for me in the past year. In this series of works, I want to express emotions with the colours given by light and shadow. The entire series captures emotional moments with swift brushstrokes and Chinese painting materials.



I want the audience to see the emotions of the human body in my work. "De-erotic, asymmetric, programmed" is at the heart of my work. When facing each model and angle, I chose the right paper and different expressions because each pose gave me a different momentary mood. With this sense of staying in the moment, I retain every line I capture, even if some strokes are unconscious or just seem wrong. Like Giacometti's inward deconstruction of the human head, I want each of my paintings to retain my thinking about painting at the time, and the different possibilities in each painting.

Sue Burnett's Monday Watercolour Class

28th July - 10th August

SUE BURNETT'S
WATERCOLOUR
CLASS EXHIBITION



28TH JULY - 10TH AUGUST

Upstairs at The Next Level Gallery
120 Victoria Street
Hamilton

wsa
art
WAIKATO SOCIETY OF ARTS

Haydn Rive Watercolours Exhibition

11th August - 31st August

HAYDN RIVE



Watercolours
Exhibition
AUGUST 11 ~ 31
NEXT LEVEL GALLERY
Preview Thursday 11th, 5:30 pm

120 Victoria St. Hamilton NZ

'My Adventures as an Artist' - 4 - by Haydn Rive

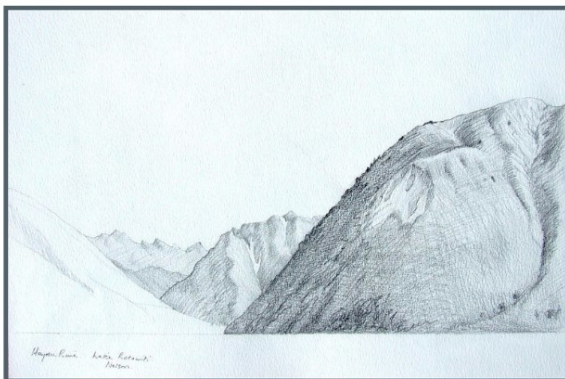


A break at ROTIWITI (4)



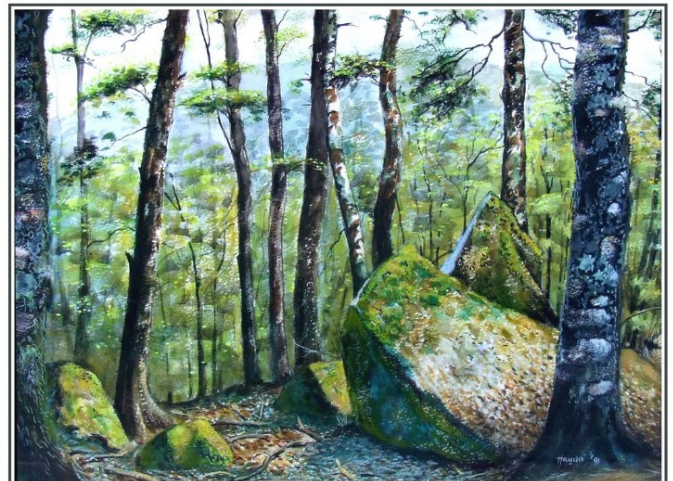
It was at Nelson that I discovered little burning spots around my stomach. My mother in law immediately recognized them as shingles. The doctor ordered "an immediate months rest!" I was happy to oblige. Busy work will get you at some point. So we retreated to a friend's house in a forest at Lake Rotiwiti.

The lake was a beautiful site for watercolours but I could only stay for five minutes and memorize the rest. The mosquitoes could zero in on me in 3-5 minutes and they were big and mean. Almost attacked in military fashion.



Surrounded by beautiful moss covered native trees, I painted one of my best watercolours. It has the dark intensity, I can feel the moss, see the texture of rock and the carpet of dead leaves.

These paintings only come by deep emotional experiences where we go through a healing and restoration process.



'My Adventures as an Artist' - 5 - by Haydn Rive



A break at Ruakaka Bay (5)

While in Nelson we met Roy who kindly offered to take us across the Sounds in his small boat to his batch at Ruakaka Bay. He was a Kiwi do it yourself bloke who was building a huge boat in his shed, played in a band and dabbled in watercolours.



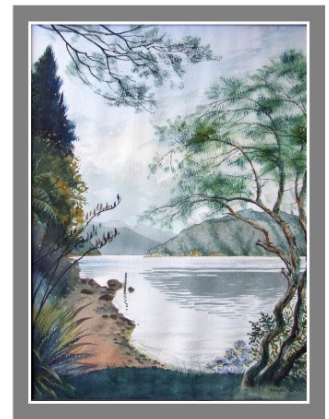
Coming across the sound in his outboard motor it suddenly conked out. "Don't worry" he said fiddling with the motor as the inter-island Ferry was getting closer. We sat transfixed with mouths open. It was a scary moment there.



It was supposed to be a holiday for us, but Roy did not know what "rest" meant. He got my older son to unclog the drain under the house. Then the boys needed to scrape the barnacles off his boat. My boys escaped once in his dingy to go fishing. Unfortunately there were some desperate moments as a storm came up and they had disappeared from sight. Roy was not happy. I on the other hand was just happy to see them alive! "I don't know half of it," they said later.

When we had got to Ruakaka Bay for our "holiday" Roy announced that he liked to be up bright and early, so "if you want breakfast you need to be up too." Needless to say we never made it to breakfast. Nor could we watch the Olympic Games. TV was not for daytime.

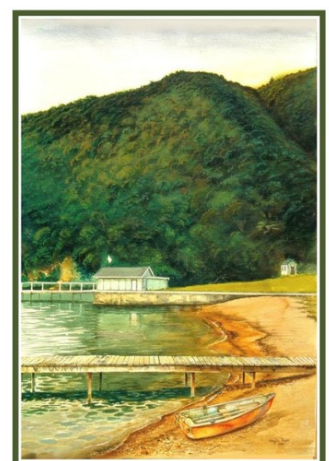
However I did manage to work up an ambitious work on a good piece of 300gm Bockingford. Remember the good stuff? I remember working hard on those hills till they began to take on real form. Probably used acrylics on the water-colour to achieve this. And even put in the scraped boat. Yes it was a beautiful site.



But this would be our first and last trip to that place.



Lake Rotiwiti by contrast was the secluded artist's paradise where your only distraction was that pesky mosquito.



Workshops

Sculpting with Polymer Clay Workshop

Saturday 23rd & Sunday 24th July

10am -4pm

Enrol now to secure your place in this unique workshop by talented WSA tutor Anya Gladstone-Gallagher



Want to gain a valuable new skill? Come along and learn how to sculpt with polymer clay! Super Sculpey is a specialised oven-bake polymer clay, often used in the manufacturing of toys, jewellery, and figurines and can be cast in a variety of materials. In this course, you will learn how to sculpt with this high-quality product. You will also learn how to build a tinfoil and wire base ('armature'), which will reinforce the structure of your creation, so it may survive the distance. Whether you want to sculpt a character who has human features, is a fire breathing dragon, or is a sub-Saharan lizard, the world is your oyster (and your sculpture could be too!). It doesn't necessarily have to be a character; you could sculpt any kind of object.

Sculpting with polymer clay is a fun way to relax and let your creativity loose. You can achieve an intricate level of detail, using a variety of tools. Sculpting is immensely helpful for those wanting to improve their drawing skills, as you will begin to understand objects in a 3-dimensional format. It also serves as a steppingstone for those planning to pursue a career in the film industry as creature designers, props makers, stop-motion animators, prosthetic make-up artists and more.

\$219

enrol online wsa.org.nz

includes all materials

Intro into Creative Writing Teaser Workshop

Saturday 16th July

10am -1pm

Enrol now to secure your place in this unique workshop by talented WSA tutor Anya Gladstone-Gallagher



Love telling stories, or need inspiration? Is that pesky inner editor stopping you from putting pen to page? In this teaser workshop, we will discuss how to write engaging characters and compelling internal conflict. We will also delve into helpful techniques for creating a safe mental space so you can write without the constant nag of self-doubt.

enrol online wsa.org.nz

\$35

Waikato Society of Arts

Membership Benefits

FREE ARTIST TALKS

DISCOUNTED ART CLASSES

DISCOUNTED WORKSHOPS

ARTIST PAGE ON WSA WEBSITE

DISCOUNTS AT LOCAL BUSINESSES

ENTRY INTO ANNUAL EXHIBITIONS

EXHIBITING IN OUR NEXT LEVEL GALLERY

FREE ACCESS TO OUR EXTENSIVE ART LIBRARY

*expiry is 1 year from date membership created or renewed



**Create or Renew
your membership**
online www.wsa.org.nz
or email artschool@wsa.org.nz

Calendar of Events and Exhibitions



2022

July School Holiday Programme	Monday 11th July - Friday 22nd July
Term 3 Starts	Monday 25th July
NYAA Opening & Awards Evening	Thursday 4th August - 5.30pm
Wintec X block gallery on Alexandra Street	Exhibition runs until 28th August
ArtsPost Members Exhibition Opening	Thursday 8th September - 5.30pm
ArtsPost Members Exhibition	Friday 9th September - 10th October
Waiprint Exhibition Opening	Thursday 13th October - 5.30pm
Waiprint Exhibition - ArtsPost	Friday 14th October - 14th November
Term 3 Ends	Saturday 24th September
October School Holiday Programme	Monday 3rd October - Friday 14th Oct
Term 4 Starts	Monday 17th October
Labour Day	Monday 24th October (no classes)
Term 4 Ends	Saturday 17th December
Office Closes	Tuesday 20th December

NEXT LEVEL GALLERY

Matariki Children's Exhibition	23rd June - 15th July
Trista Xiang 'Asymmetry of Emotions'	14th July - 27th July
Sue Burnett's Watercolour Class Exhibition	28th July - 10th August
Haydn Rive Watercolours Exhibition	11th August - 31st August

WSA EXHIBITION SPACE

MAVIS & CO CAFE', BISTRO & BAR ROTOTUNA

Rototuna Shopping Centre
2/44 Horsham Downs Road

Kate Symmans 'Bedrock' Exhibition'	14th June - 19th August
Geoff McGowan 'No Bull' Exhibition	19th July - 30th August
Experimental Printmaking Class Exhibition	30th August - 4th October
Sue Roots Exhibition	4th October - 22nd November

Help us thrive!

Join **CommUnity** and choose us as
your **CommUnity Group** to support.

CommUnity
turning commerce
into community
www.comm-unity.kiwi

Sponsors

We would like to thank our sponsors for their support of the WSA.



Caiger Charitable Trust



Susie & Clifford Allen





ART ESSENTIALS

SALE

386 Anglesea Street, Hamilton
Instore and Online
www.gordonharris.co.nz
Sale from: 05/07/22 - 29/08/22

Gordon Harris
THE ART & GRAPHIC STORE

FROM THE EDITOR - PAULETTE BRUNS

If you have articles suitable for our newsletter, please send these in for approval.
A very special thanks to SHARP, who continue to help us substantially with printing.

SHARP

Be Original.

NEWSLETTER ADVERTISING

While we support local artists, we always endeavour to promote our school classes, workshops and WSA activities first.

One of the perks of membership is to advertise, for free, something of your work or upcoming exhibitions up to 50 words, without enlargement or photos.

These are approved before going to print.

WSA OFFICE AND ART SCHOOL

120 Victoria Street (above ArtsPost Gallery)
PO Box 1018, Hamilton 3204
07 839 4481

Office Hours:

Mon-Fri 8.30am-4pm

Sat 9.30am-12.30pm

(these may vary, please check in advance)

artschool@wsa.org.nz for art school (Paulette)

wsa@wsa.org.nz for all WSA enquiries (Julie)

Website: www.wsa.org.nz

(Paulette works in the office 22 hours per week, if you need a faster reply please include Julie's email)

WSA EXECUTIVE COMMITTEE

Patron: Joan Fear

Committee: Michelle O'Brien
Nicolas Wells
Melany Sutherland
Gemma Reid
Gaye Jurisich
Karen Taylor
Treasurer & Chair: Rachael Hayton
Hon. Solicitor: Charlotte Isaac
Hon. Secretary: Julie Johnstone