



WAIKATO SOCIETY OF ARTS

Art Connections

PO Box 1018 Hamilton 3240 www.wsa.org.nz

Welcome to the September newsletter.

Haven't we been lucky with the string of fine weather we have had lately, it's so nice seeing all the trees flowering and giving people inspiration to use these as their subjects for art classes. There are some good examples of this in the new exhibition at blue gallery, on now. The Members exhibition was opened last weekend by Executive Committee member Nicolas Wells, to a great crowd and a beautiful example of the work being done at the WSA and in artist's studios. Note this in your calendar to take a look before it closes. A big thank you to Caroline Peacocke for curating this exhibition and to Paulette Bruns who hung all the work, your time is greatly appreciated. Thank you to all who support this annual exhibition and don't forget to vote for the People's Choice Award, one lucky artist will receive a one year WSA membership.

On the same weekend Vivien Hendy had the opening of her annual children's exhibition. This is being held at Trust Waikato, on Little London Lane, if you are in the area please drop in and see the exceptional work from her 3 classes.

The annual National Youth Art Awards has finished for 2023 and we would like to thank all the artists who entered, the finalists who gave us an exceptional exhibition of such a high standard, our two magnificent judges Hollie Tawhiao and Tonia Geddes and last but certainly not least, the incredible team of sponsors who attend and support this award and overwhelmingly make this a success. Thank you for nurturing and promoting youth art in Aotearoa.

Our Annual General Meeting is coming up in October. If you are interested in putting your name forward to join the Executive committee and you have the right experience we are looking forward then take the time to complete the nomination form enclosed and send in to Julie in the office. We are always looking for particular knowledge and governance skills to boost the dedicated and driven team we already have.

If your calling is as a volunteer for other things to help the WSA then please let us know also as we always have small jobs around the WSA and art studios that need doing or exhibitions and openings you can help with.

The NZ Painting and Printmaking Awards are now open for 2024. This exhibition will be held in April, with entries closing in February. All the details so far, can be found under the awards section on our website, wsa.org.nz. Announcements regarding our two amazing Judges and venue will be released over the coming weeks. We are really looking forward to this one, following on from the changes made in 2023, this award keeps evolving and maintaining its reputation as one of Aotearoa's key events on the art's calendar. If you would like to consider becoming a sponsor for this award please contact Julie in the office to discuss the opportunity of being part of a legacy that has been promoting NZ artists for over 23 years. As a not for profit group this is no small achievement and having like-minded sponsors, art lovers, champions of NZ artists, helps keep the sustainability of this award, for a long time to come.

A special thank you to Melinda Drysdale and Judy Love who have been working away at our art library for the past few weeks. This is now looking so much more organised with all the books categorised and tidy. Please use the library, with all its wonderful resources but make sure you put your books back in the right place. It is so easy now to do this that it would be great to see everyone taking as much pride in this valuable asset as they have.

Have a great week!



Members Exhibition

Our annual members exhibition opened on Saturday 19th August to a great turnout. There are over 60 works by members on display from all mediums. Many well priced works are on offer so be sure to call in to view the exhibition. Thank you to Executive committee member Nic Wells for welcoming our guests.

blue Gallery, 3 Anzac Parade, Hamilton.

Waikato Society
of Arts

19 August - 9 September

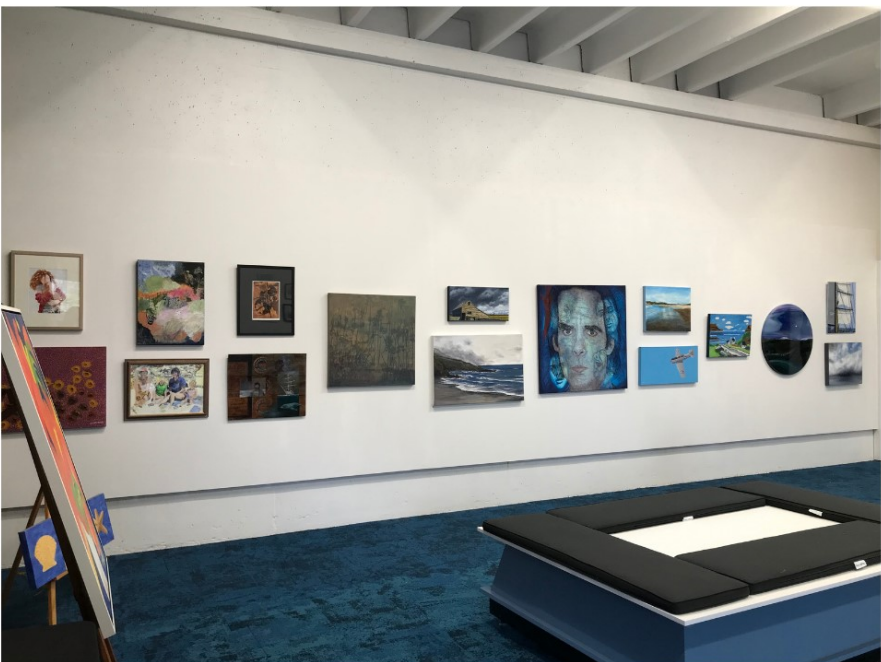
wsa
art

WAIKATO SOCIETY OF ARTS

blue

Wed - Sat 11.30am - 3pm

Members
Exhibition



Members Exhibition - Patchwork Quilt

Talented and generous WSA member Amanda Talsma-Williams has made a beautiful double sided patchwork quilt from which the sale proceeds will be donated to the Gisborne Disaster Relief Fund. The quilt is currently on display in our members exhibition at blue gallery. The quilt is 1600 x 1600mm in size and has a different pattern on the reverse side. Call in to view the quilt and the exhibition before it ends on Saturday 9th September. There are 2 other quilts made by Amanda in the WSA office. She is kindly donating the sale proceeds from these to the WSA.

blue Gallery, 3 Anzac Parade, Hamilton.



'Jetés ensemble'

A Talsma-Williams and Donna Ward

*(1600 x 1600mm, mixed fabrics, machine pieced by A T-Williams,
quilted by Donna Ward of Donna's Quilt Studio)*

As part of an Improvisational Patchwork course online in August 2022, I gathered scrap fabrics (including print-room waste and hand-dyed fabrics) in a palette of what I feel are New Zealand key colours of orange, blue, green, teal and grey, and assembled them into 50+ 6 inch (15cm) squares. I improvised squares, triangles, curves and stripes using the scraps I had. I was looking to make a satisfying self-contained 'world' within each square. I sashed between blocks with 3 inch (7.5cm) strips of white cotton, to give each individual block space, and then put the quilt top in a cupboard, not sure what was wanted for the back.

After watching the footage of Cyclone Gabrielle on the news in February 2023 and wanting to help in some way, I enlarged a traditional 'hurricane block' design ten-fold and returned to the same spectrum of colours to piece the back (or front, depending on your point of view).

Donna Ward of Donna's Quilt Studio longarm-quilted it for me, adding the wavy lines of waves, or perhaps isobars, to add movement to the highly structured piece.

All proceeds of the sale (minus the gallery's commission) will go to the

Disaster Relief Trust

under the aegis of Gisborne District Council and Civil Defense.

[\(https://www.gdc.govt.nz/services/](https://www.gdc.govt.nz/services/)

[tairawhiti-road-to-recovery/flood-recovery\)](https://www.gdc.govt.nz/services/tairawhiti-road-to-recovery/flood-recovery)

(1600 mm wide hanging pole with D shackles can be included)

Nous pensons que nous sommes indépendants et en sécurité, mais parfois nous sommes
jetés ensemble.

(We think we are independent and secure but sometimes we are thrown, together.)

Please note there are also two other quilts for sale, in the WSA office. Proceeds to the WSA

Waiprint 2023

23 September – 15 October at **blue gallery**
3 Anzac Parade, Hamilton Central, Hamilton

Opening: Friday, 22 September, 5.30

Closing: Sunday, 15 October, 1.30-3.00



Workshops: Saturday, 23 September, and Saturday, 7 October

We're firming up details for the two workshops. The first is with guest artist Marty Vreede. He'll teach a relief collagraph technique that gives quick, satisfying results that can stand alone and can also be incorporated into your other print practices. The second, two weeks later, is with Graham Judd of Inkiana Press. He'll bring his press down from Auckland for an introduction to letterpress. You'll find more info in the WAIPRINT 2023 entry form included with this newsletter. Please contact Julie to register interest in either or both of these workshops. julie@wsa.org.nz

WAIPRINT, which has been running for over 25 years, is the annual opportunity for WSA printmakers to strut their stuff. With strong support from the WSA office, the exhibition relies heavily on volunteer labour.

Now that we're exhibiting at blue gallery, we really need help from the printmakers themselves to sit with the exhibition (11.30am-3pm, Wednesday through Saturday). We could even expand into Sundays if we had enough docents. And even if you're not exhibiting, you can still help out!

Thinking cap time:

How can we increase public interest and foot traffic for the exhibition?

Would you be willing to do some printy sort of work or demonstration while sitting as docent?

How about offering printmaking opportunities to the public? We should be able to find a small press to set up in the gallery.

Please contact me at jmeadows51@gmail.com with any ideas of what you can offer.

Janice Meadows



image:

Swan plant: an example of a relief collagraph from Marty's workshop.

Mavis & Co Exhibition Toni Leefe

31st July - 3rd September

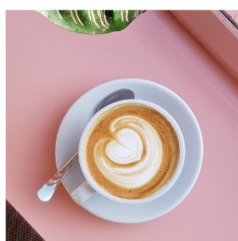
Currently exhibiting at Mavis & Co Rototuna is WSA member Toni Leefe. Toni has wowed us for years with her ability as a mouth painter. Be sure to visit this exhibition, to see her amazing works for yourself.



MAVIS AND CO

café · bar · bistro

**Rototuna
Shopping Centre
2/44 Horsham
Downs Road**



Mavis & Co Exhibition 'Exploration 2023' by Li-Swan Lim

5th September - 3rd October

From September 5th WSA member Li-Swan Lim will be next to exhibit at Mavis & Co Rototuna. Li-Swan will have a beautiful selection of watercolours on display. These will be worth stopping by to view.

'In my water colour journey, I am, predictably, exploring different techniques but more significantly different styles. This is a collection of the different perspectives of presenting the medium, which are predominant to me so far. Inspiration comes to me from simple things; the seasonal flowers from my garden, the crockery in the kitchen, the expansive landscapes from the outdoors and the fun experimentation with colour and techniques.'



July School Holiday Programmes

Enrol online wsa.org.nz

Monday 25th September - Friday 6th October
9am-12pm

Shop now. Pay later.
Always interest-free.



Enrol online now to secure a place for your child in our September/October Art Holiday Programme. Our highly skilled and talented term tutors are passionate about art and inspiring children in their creations. Small class numbers give your child a quality and personal experience.

Monday 25th Sept - Paint a Chinese Vase with Spring Flowers and Clay Creations

Tuesday 26th Sept - Shading and Drawing Skills and Flip Art Book

Wednesday 27th Sept - Watercolour Landscape Painting and Stamp Art Creations

Thursday 28th Sept - Weaving Mandala Wool Art and Oil Pastel and Dye Pattern Art

Friday 29th Sept - Vibrant Collage Artworks and Watercolour and Pigment Liner Designs

Monday 2nd Oct - Monochromatic Painting and Clay Modelling

Tuesday 3rd Oct - Drawing Building Shapes into a City Scene and Create a Keyring

Wednesday 4th Oct - Painted Cube Artworks and 3D Zig Zag Art Book

Thursday 5th Oct - Watercolour Creations and Chalk Pastel Art

Friday 6th Oct - Abstract Artworks and Scroll Art Creations

\$35 per child per morning, or \$30 if attending 5 mornings or more.



12-17 year olds – Sculpture and 3D Character Design September Holiday Programme

Monday 25th September - Thursday 28th September
9am-12pm

**\$199 for all 4
mornings, includes
all materials**

Want to bring a creature to life these school holidays? Learn how to design and sculpt your own main character! 12-17 year olds will love this programme! Super Sculpey is a specialised oven-bake polymer clay, often used in the manufacturing of toys, jewellery, and figurines. In this course, you will learn how to design a character and sculpt with this high-quality product. You will also learn how to build a tinfoil and wire base ('armature'), which will reinforce the structure of your creation, so it may survive the distance.

Does your character have three heads or fire spurting from their nostrils? Maybe they have human features or just those of a plain old bunny rabbit. In this class, the world is your oyster (and your character could be too!)

Sculpting with polymer clay is a fun way to relax and let your creativity loose. You can achieve an intricate level of detail, using a variety of tools.



Term 4 Classes

Term 4 art classes start from Monday 9th October and run for 8 weeks. *(No classes Labour Weekend - Saturday 21st October and Monday 23rd October).* **Some spaces are available now for enrolments, with more opening up after Friday 8th September when we know which existing students are returning or not.** Our class numbers are kept small to give you a quality experience from our talented and highly skilled tutors. Members receive a \$40 discount off adult classes. Our childrens classes are already discounted as low as possible to give all youth access to quality art tuition and all materials are included. We also have AfterPay available.

Enrol online at wsa.org.nz

Shop now. Pay later.
Always interest-free. **afterpay**

Spaces currently available:

Monday The World of Texture - 9.30am-11.30am

Tuesday Introduction to Relief Printmaking - 12.30pm-2.30pm

Tuesday 'Lets Talk About Art' - 1pm-2.30pm

Tuesday 10-14 year olds Art Class - 4pm-5.30pm

Wednesday 5-9 years Art Class - 4pm-5.30pm

Thursday 'Drop In' Untutored Group - 10am-12pm

Thursday Painting & Drawing Techniques - 9.30am-11.30am

Thursday 5-9 years Art Class - 4pm-5.30pm

Thursday Figure Drawing - 4 weeks - 6.30pm-8.30pm

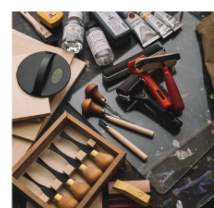
Thursday Life Drawing - 4 weeks - 6.30pm-8.30pm

Friday Untutored Watercolour Group - 9.30am-11.30am

Friday 5-7 years Art Class - 4pm-5.30pm

Friday 8-10 years Art & Illustration Class - 4pm-5.30pm

Saturday 5-9 years Art Skills - 9.30am-11am



Workshop - Pocket-Garden Design Course

When: Thursday Evenings 9th – 16th – 23rd November, 2023

Where: Waikato Society of Arts, Studio 3, Level 1,
120 Victoria St, Hamilton

Full Course: \$75 (3 sessions)

Join garden designer, John-Paul, and learn how to design compact garden areas successfully.

This course of three sessions introduces some fundamental garden design skills and helps students visualise and plan garden spaces.

Limited numbers.

Register and info at:

<https://wsa.org.nz/art-school/classes/>

Or email: pocketlandscapesnz@gmail.com

Tutor: John-Paul Oliver (NZCHS – Landscape Design)



NYAA - National Youth Art Award - Peoples Choice Award Winner

Congratulations to the 2023 NYAA People's Choice Award Winner Nathan Wilson with his striking and vibrant artwork 'Under Nights Skies'. Nathan received a \$500 voucher generously sponsored by Gordon Harris to spend at any of their stores nationwide.



WAIPRINT 2023

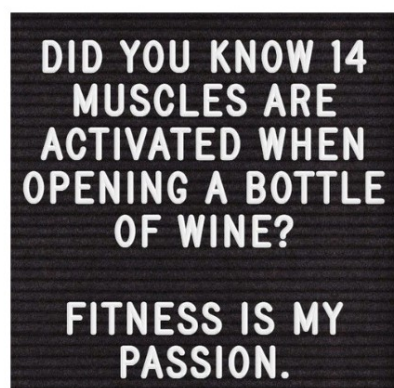
Exhibition

23 September – 15 October at **blue gallery**
3 Anzac Parade, Hamilton Central, Hamilton

Opening: Friday, 22 September, 5.30
Closing: Sunday, 15 October, 1.30-3.00

Workshops: Saturday, 23 September, and Saturday, 7 October

Funnies



Dad challenges kids to draw him sleeping so he can have a nap 😂

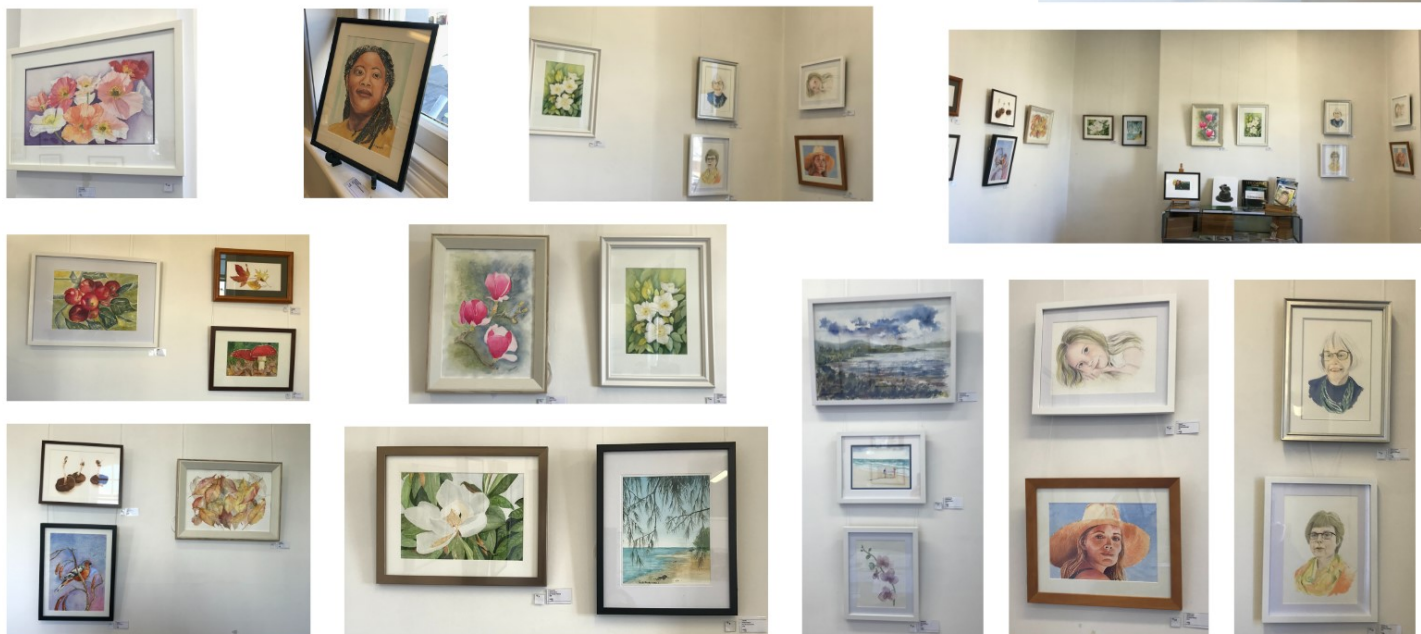


ONE MINUTE YOU'RE
YOUNG AND FUN. AND
THE NEXT, YOU'RE
TURNING DOWN THE
STEREO IN YOUR CAR
TO SEE BETTER.

Next Level Gallery

Sue Burnett's Monday Watercolour Class Exhibition

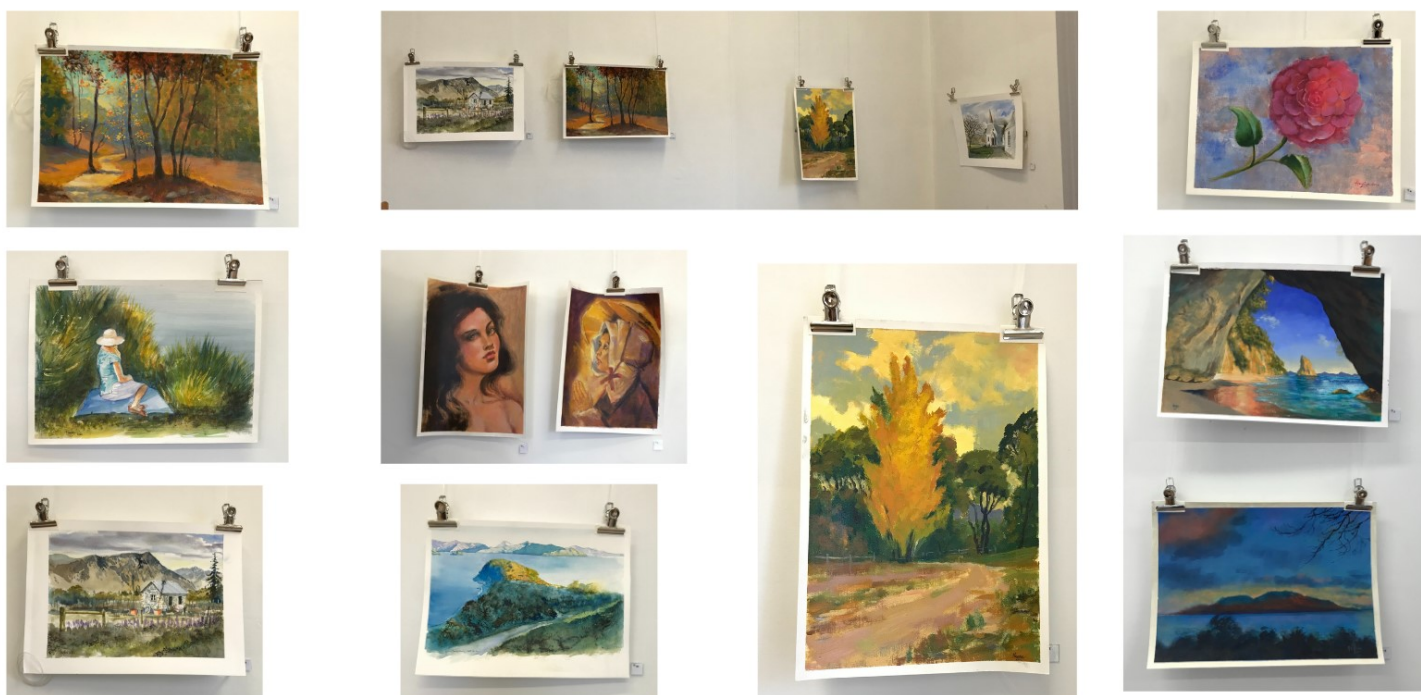
We recently had a class exhibition from tutor Sue Burnett's Monday watercolourists. There was a lovely variety of art on display.



Next Level Gallery

Haydn Rive's Class Demos Exhibition

Currently on display in our office gallery space is a selection of unframed A3 artworks by long time WSA tutor Haydn Rive. These are pieces he created as class demos during some of his acrylic and watercolour classes. Well priced and worth stopping by to view.



Member News

Margot Philips' 'Landscapes in Hamilton'

by Norman Franke

WSA member Norman Franke recently had an article published Eye Contact Magazine about NZ painter Margot Philips. Margot was one of the early promoters of the WSA and an iconic Waikato Landscape artist. Copy the link below to your browser to view the full article.

<https://eyecontactmagazine.com/2023/08/margot-philips-landscapes-in-hamilton>

'After she saw the Colorado River and parts of the Grand Canyon from the surrounding bluffs, on a trip to the USA in 1949, Philips increasingly began to depict landscapes from a bird's eye view. Subsequent air travel to New Zealand's South Island reinforced this predilection for an elevated perspective, expansive spaces and horizons. Both her pictures of the Waikato region and those of the South Island show strong dynamics of lines and undulating coloured forms, which hint at the subterranean geological dynamics of New Zealand landscapes.'



Exhibition: Tuesday Group



Waikato Society of Arts
Experimental Print-makers
from Hamilton

September 2 - 30
Mon - Fri 10 - 4
Sat, Sun 10 - 2



Imprint Gallery
Main St, Historic Village,
Tauranga
<https://www.imprintgallery.art>

Creative at Home Packs

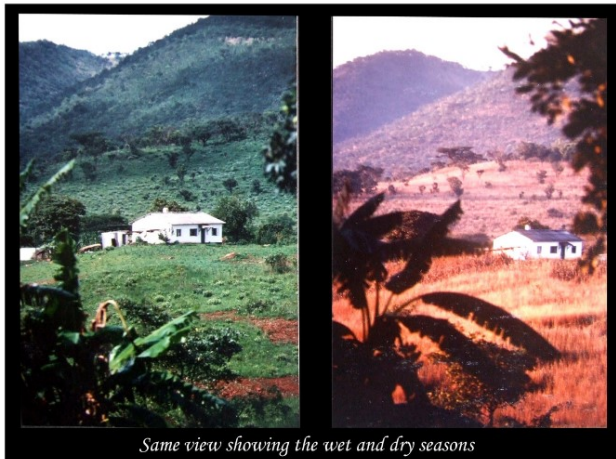
SAVE & BUY 10 PACKS FOR \$90

LEARN ABOUT THE COLOUR WHEEL Pack includes everything needed to complete the activity. Includes: Instruction Sheet, Colour Wheel, Colour Chart, Paper, Paint, Brushes, Glue, Scissors, Ruler, Pencil, Eraser, Sharpener. \$12	LEARN TO DRAW STEP BY STEP Pack includes everything needed to complete the activity. Includes: Instruction Sheet, Paper, Pencil, Eraser, Sharpener, Ruler, Glue, Scissors, Paint, Brushes. \$10
MANDALA CREATIONS Pack includes everything needed to complete the activity. Includes: Instruction Sheet, Paper, Pencil, Eraser, Sharpener, Ruler, Glue, Scissors, Paint, Brushes, Glue, Scissors, Ruler, Pencil, Eraser, Sharpener. \$10	COLOURED PAPER ARTWORKS Pack includes everything needed to complete the activity. Includes: Instruction Sheet, Paper, Pencil, Eraser, Sharpener, Ruler, Glue, Scissors, Paint, Brushes, Glue, Scissors, Ruler, Pencil, Eraser, Sharpener. \$10
WATER COLOUR PAINTING Pack includes everything needed to complete the activity. Includes: Instruction Sheet, Paper, Pencil, Eraser, Sharpener, Ruler, Glue, Scissors, Paint, Brushes, Glue, Scissors, Ruler, Pencil, Eraser, Sharpener. \$12	PAINT A SUNSET Pack includes everything needed to complete the activity. Includes: Instruction Sheet, Paper, Pencil, Eraser, Sharpener, Ruler, Glue, Scissors, Paint, Brushes, Glue, Scissors, Ruler, Pencil, Eraser, Sharpener. \$12
LEARN TO DRAW UPSIDE DOWN Pack includes everything needed to complete the activity. Includes: Instruction Sheet, Paper, Pencil, Eraser, Sharpener, Ruler, Glue, Scissors, Paint, Brushes, Glue, Scissors, Ruler, Pencil, Eraser, Sharpener. \$10	CREATE WITH CLAY Pack includes everything needed to complete the activity. Includes: Instruction Sheet, Paper, Pencil, Eraser, Sharpener, Ruler, Glue, Scissors, Paint, Brushes, Glue, Scissors, Ruler, Pencil, Eraser, Sharpener. \$14
PAPER SNOW FLAKES Pack includes everything needed to complete the activity. Includes: Instruction Sheet, Paper, Pencil, Eraser, Sharpener, Ruler, Glue, Scissors, Paint, Brushes, Glue, Scissors, Ruler, Pencil, Eraser, Sharpener. \$10	DOT PAINTING Pack includes everything needed to complete the activity. Includes: Instruction Sheet, Paper, Pencil, Eraser, Sharpener, Ruler, Glue, Scissors, Paint, Brushes, Glue, Scissors, Ruler, Pencil, Eraser, Sharpener. \$10

Impressions of Africa by Haydn (3)

Climate Contrasts in Zimbabwe..

I lived on a compound at Mazoe Secondary School for boys. It was situated 20 miles north of Salisbury (now Harari). There are two main seasons – Wet and Dry, and what a contrast and transformation took place with the land scape! This fascinated me to try to record on film and capture in paint.



This shows the contrast of the two seasons - both wet and dry. This was the African worker's compound at Mazoe.



The much awaited rainy season came announcing it's appearance with a the darkest of clouds, thunderous claps and amazing lightning displays



10th Annual Exhibition of Youth Art

The opening was busy, loud and by the comments received a lot of fun. On Sunday 20th we gathered to celebrate a year's work from the students who attend the Exploring Art Techniques classes at WSA on Monday, Tuesday and Thursday from 4 to 5.30pm. The attendance by parents, grandparents, students and siblings over the three and a half hours the party continued was gratifying and it is estimated between 80 and 100 attended. It provided the parents with a chance to meet and socialize beyond the school corridor, for the young people to enjoy the party food and for many to do some art. A room with art supplies and 'ideas' was provided so as to keep the younger children occupied with various activities. The music provided by the Cambridge Brass Quintet was much appreciated by all and certainly was of interest to those who were not familiar with brass instruments and their versatility. Thank you to our musicians on the night.

The art on show was a representative sample of the years work with every student in the classes having a piece on display. What was on show? Imagination is an important part of what is taught in class and the students were presented with a box of different seeds in the form of pods, cones and interesting shapes and asked to do a piece of work based on their choice of seed. The whimsical and delightful banksia monsters, pinecone hedgehog, acorn tree playhouse, owl and seed pod eels were some of the interesting results.

An emphasis on scientific drawing from nature has been made over the years and is especially used in science fairs at school. The results from several students were on display but this approach has resulted in the journal Toitoti requesting illustrations for stories written by skilled literature buffs. It has been an exciting venture for several students who have had their work published and two stories about our need to care for our environment are represented here. The stories illustrated were on the native fish Kokapu and the shellfish, toheroa and three paintings were selected from the series submitted for publication. Our feathered friends were not forgotten as a unit on feathers and their different placement on a variety of birds was explored and considered as woodcuts and also design components.

There are several animal faces and full pictures of animals where learning to draw and painting fur was the skill required and the students will agree it is a skill! Here we thank Monti, the classroom golden retriever who has demonstrated for years which way fur goes and how it differs in appearance in different places.

The students in these classes have done their parents and themselves proud as they work diligently, patiently and with care to achieve the wonderful display that has been on show at Trust Waikato. Once again, I give a big 'thank you' to Trust Waikato and the staff for hosting us and making us so welcome by providing a venue where we could have so much fun.

Vivien Hendy (Tutor)



10th Annual Exhibition of Youth Art - continued



Calendar of Events and Exhibitions

SEPTEMBER

SUN	MON	TUE	WED	THU	FRI	SAT
				WSA Members Exhibition Continues	1 Term 3 Classes Continue	2
3	4	5 Haydn Rive Exhibition in the Student Gallery Space Ends Li-Swan Lim Exhibition at Mavis & Co Rototuna starts	6	7	8	9 WSA Members Exhibition Ends
10	11	12	13	14	15	16
17	18	19	20	21	22 Waiprint Opens	23 Term 3 Classes End
24	25 School Holiday Programme	26 School Holiday Programme	27 School Holiday Programme	28 School Holiday Programme	29 School Holiday Programme	30

OCTOBER

1	2 School Holiday Programme	3 School Holiday Programme Hannah Savage Exhibition Mavis & Co	4 School Holiday Programme	5 School Holiday Programme	6 School Holiday Programme	7
8	9 Term 4 Classes Start	10	11	12 Waiprint Exhibition Ends	13	14
15	16	17	18	19	20	21 No Classes Labour Weekend Saturday
22	23 No Classes Labour Day	24	25	26	27	28
29	30	31 Term 4 Classes Continue				

Sponsors

We would like to thank our sponsors for their support of the WSA.



Hamilton City Council
Te kaunihera o Kirikiriroa

Hamilton City



Caiger
Charitable
Trust



MAVIS AND CO

café · bar · bistro



Susie & Clifford Allen



Bustle



the FRAMING
WORKSHOP





ART ESSENTIALS

SALE

386 Anglesea Street, Hamilton
Instore and Online
www.gordonharris.co.nz
Sale from: 04/07/23 - 04/09/23

Gordon Harris
THE ART & GRAPHIC STORE

A very special thanks to SHARP, who continue to help us substantially with printing.

SHARP
Be Original.

NEWSLETTER ADVERTISING

Whether you're a member or not, we are excited to hear about your art-related adventures, exhibition reviews or travels, accompanied by your own photos. These will be reviewed by the WSA and included if we have space and they do not conflict with our operations. The Executives decision is final. Please contact us at wsa@wsa.org.nz

WSA OFFICE AND ART SCHOOL

120 Victoria Street (above ArtsPost Gallery)
PO Box 1018, Hamilton 3204
07 839 4481
Office Hours:
Mon-Fri 8.30am-4pm
Sat 9.30am-12.30pm
(these may vary, please check in advance)
artschool@wsa.org.nz for art school enquiries (Paulette)
wsa@wsa.org.nz for all WSA enquiries (Julie)
Website: www.wsa.org.nz
(Paulette works in the office 22 hours per week, if you need a faster reply please include Julie's email)

WSA EXECUTIVE COMMITTEE

Patron:	Nancy Caiger
Treasurer & Chair:	Rachael Hayton
Committee:	Michelle O'Brien
	Nicolas Wells
	Melany Sutherland
	Gemma Reid
	Holly Tawhiao
Hon. Solicitor:	Charlotte Isaac
Hon. Secretary:	Julie Johnstone