



Art Connections

WAIKATO SOCIETY OF ARTS

PO Box 1018 Hamilton 3240 www.wsa.org.nz

Welcome to our September 2021 newsletter

Thank you to all our essential workers who continue to work hard through this latest outbreak in New Zealand. We appreciate your commitment and ongoing effort for all of us.

Due to the current level restrictions there have been some major changes to our National Youth Art Awards and the NZ Painting and Printmaking awards.

The National Youth Art Awards were meant to be held next week, September 9th but due to finalists not being able to access their work from schools or framers and courier it all in time we have postponed the exhibition and awards until February 10th, 2022.

This has also meant that due to gallery space the Waiprint exhibition is now being held before the NYAA in the ArtsPost, Ida Carey gallery, opening on January 13th at 5.30pm. This does mean that entries for this exhibition have been extended until December 1st, 2021, along with delivery of art work at the same time to the WSA office. If you have already entered, you do have the opportunity to change your entry if you wish, simply contact the WSA or Janice Meadows. At this point, the workshop has been postponed and we will advise everyone when this will be run as it works for Gemma.

We have also moved the closing date for the New Zealand Painting and Printmaking Awards, due to the same reasons around artists being able to access their work to finish, photograph and enter before September 6th, 2021. **This will now have a final entry closing date of February 7th, 2022.** The awards will still be held at The Pavilion in the Hamilton Gardens on Friday, April 8th, with the Judges talk on Saturday, April 9th, 2022. We hope this will accommodate all those who were concerned they would not meet the deadline. We were already in discussions about moving the NZPPA to April to help split up our exhibitions and bring it back in line with the summer period that we so enjoyed at the Gardens. Our aim is to keep this award being held over the Easter period for the future. We look forward to your entries for this prestigious award. Any entries already received up until August 31st, 2021 will be able to change their entries if they would like to, please contact Julie at the WSA office. Please remember that online entries are the preferred way of entering.

For any Waiprint and Award changes please visit our website and download the new updated entry forms.

Some good news for those who entered our ArtsPost Members Exhibition. This had only be exhibited for 12 days before we went into Level 4 lockdown. We have the opportunity to keep this hung, once we enter level 2 and the galleries open. We can then have the exhibition open for the rest of our 5 week booking period or until the next exhibition at the beginning of October, whichever comes along first. We are thankful for the extra time for our artists to have their work displayed. This has always been about creating an opportunity for all our members, as part of their fees, to be able to exhibit their work in a quality art gallery. Thank you to our more experienced artists who recognise the value of encouraging new participation and growth in the arts and continue to enter and support this annual exhibition.

This latest lockdown has unfortunately caused a lot of disruption in our term classes and we hope to have these up and running as soon as we are allowed, in to level 2. Thank you to all our tutors who have continued to keep in touch with their students and give them some things to work on while in lockdown. It is always so rewarding to have our amazing art tutors so willing to keep the creativity and learning going, even if it is delivered differently from all the planning they do before each term's art lessons. A big thank you to Paulette for keeping the students and tutors updated as things change.

Our Next Level gallery missed out on Nici's class exhibition and Vivien's class exhibition may not eventuate either but we will keep our website updated for any changes from the advertised calendar dates in this newsletter. Hopefully, we can reschedule these for early next year. Remember to drop in to Ann Harlow's exhibition at Mavis and co, Rototuna, when they can reopen for coffee and meals and support her beautiful work hanging there.

Take care, look after your families and keep an eye out on any neighbours who live alone, if you can. Keep being creative and make the most of the exhibition entry deadlines being extended to have a goal to work towards. We look forward to seeing you all at the WSA and at the future events we have planned. There is a lot to look forward to over the coming months.

Julie



**This will now have a final
entry closing date of
February 7th, 2022**

The awards will open from **Friday, April 8th**
(at the Hamilton Gardens Pavillion), with the
Judges talk on Saturday, April 9th, 2022



Notice of the AGM of the Waikato Society of Arts

The Annual General meeting of the Waikato Society of Arts will be held on Monday 4th of October 2021 at the WSA, Studio 2, Level 1, ArtsPost building, 120 Victoria Street, Hamilton at 6pm.

1. Any member who wishes to move a resolution at the AGM must notify the Operations Manager by the 6th of September 2021. Nominations for Executive Committee are required to be in the hands of the Office Manager no later than noon on 19th September 2021. These can be submitted via Julie in the office as Honorary Secretary and they will be passed to the executive at that evening's meeting.
2. Nomination forms are available from the office and by email on request. They must be signed by a proposer, a seconder and the nominee to show they are willing to be proposed.
3. The Executive consists of the Chair, the Secretary, the Treasurer, and up to 8 other members.
4. All other members must be financial to vote, be nominated, to nominate another member or speak at the AGM. Nominations may be accepted at the AGM at the discretion of the Chair.
5. A quorum for any General Meeting is 15 members personally present.
6. Any member is able to appoint another financial member or the Chairman of the meeting to vote on their behalf. Such a proxy shall be notified in writing to the Secretary not less than 24 hours prior to the meeting time.

Proxy forms are also available from the office, or by email, on request.

For the health and continuity of the WSA it is important that we have a good attendance and the participation of members. Those proposing to be on the committee are expected to attend regular meetings (usually monthly), unless poor health or other urgent business prevents them from doing so. Executive members are also expected to be in the office and in touch with the WSA Operations Manager on a regular basis during term time. Sub-committees are intended to organise tasks that WSA carries out, and executive members are expected to be involved in these as needed, alongside other members, and to report back to, and facilitate liaison with the executive.

We all enjoy the benefits and privileges of membership of the WSA and the enjoyment making art brings, so please look for a way in which you can contribute to our Society.

WSA Executive Committee.

WSA History

We thought it would be nice to put little excerpts into our monthly newsletter about the history of the WSA. The excerpt below is from 'Moves Afoot - A supplementary history of the WSA 1983-2009' by Megan Lyon

The Waikato Society of Arts (WSA) has been a significant part of Hamilton's cultural, historical and community make-up since its inception on 14th August 1934. This was the result of a public meeting convened by two Hamilton artists, Ida Carey and Adeline Younghusband and Dr 'Tim' Rogers, who believed the 'arts should be the heart of life of every town, as a vehicle for the expression of humanity and morality'.



Part 9: The Art Awards

New Zealand Painting and Printmaking Award (NZPPA)

This award was originally known as the Waikato Summer Art Award but it became known as NZPPA with a closer focus on particular media. The 'main focus is to have work that would be suitable to belong in your own home. For that reason we have a medium (genre) and size restriction.' This award and accompanying exhibition forms part of the Hamilton Summer Gardens Festival and is sponsored by the Philip Vela Trust.

Pam Nash, who has been involved in both awards since their inception, said in 2008 that 'the awards have continued to grow in popularity and stature. What we have found is the quality has really gone up in the past few years. This year we have a number of previous winners and finalists entering, as well as some very well-known artists. What's been particularly satisfying is seeing how previous winners have used the awards as a springboard. It's exciting to see how they have used the prize money to grow their careers.'

NZPPA Winners 2001-2008

2001 Lorraine Rastorfer

Hush

Judged by Carole Shepherd, Elam School of Fine Art, Auckland.

2002 Lisa Crowley

The Passenger

Judged by Allan Smith, Senior Curator of the Auckland Art Gallery.

2003 Ruth Cleland

Interstice

aquatint and graphite print
Judged by Linda Tyler, Senior Curator, Hocken Gallery, Dunedin.

2004 Seung Yul Oh

*Its ultra moisture and protein
rich formulation smoothes*
paint and ink on canvas
Judged by Anna Bibby,
Auckland.

2005 Louie Galloway

Mr Yip Man of Hong Kong

Judged by Warren Feeney,
Centre of Contemporary Art
Director.

2006 Richard Lewer

The Best Tackler (2005)

Judged by Emma Budgen, Formerly Curator,
City Gallery, Wellington. At the time of
the awards she was Curatorial Resident,
Nordic Institute of Contemporary Art in
Helsinki, Finland.

2007 Simon Esling

Untitled (Jagdpanther) (2006)

Judged by Professor Elizabeth Grierson,
Head of the School of Art at RMIT University
in Melbourne.

2008 Michael Taylor

Vanitas: To the actual size of everything
oil on linen

Judged by Art Critic TJ McNamara,
Auckland.

(*You can read previous excerpts of WSA history on our website www.wsa.org.nz click on 'news' then any newsletter from August 2020)

Lockdown Boredom Busters



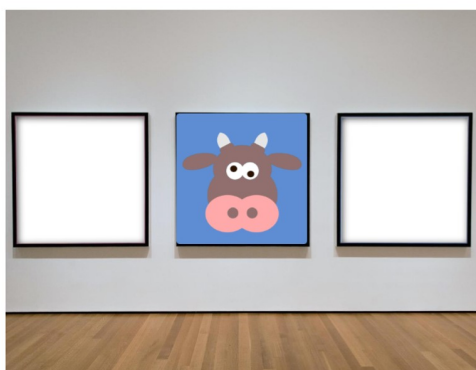
AT AN ART AUCTION

WORD SEARCH PUZZLE

A W R S A V N A C V P
T A E W D I B A I R A
S L B E N U C E I G I
T L I I O I W V A T N
C C R V F V A L U E T
E O C E F T L G L E I
L L S R E E I B R P N
L O E P R O A I A A G
O R D Y N T H S A C B
C S S D L O S T U D Y

The words appear UP, DOWN, BACKWARDS, and DIAGONALLY.
Find and circle each word.

BARGAIN
BID
CANVAS
CASH
COLLECT
COLORS
DESCRIBE
GALLERY
HIRE
OFFER
PAINTING
PASS
PREVIEW
PRIVATE
SOLD
STUDY
TABLE
VALUE
VIEW
WALL



© 2020 Jodi Jill Not for Resale. Cannot be reposted online. Feel free to copy and share!
www.puzzlestoplay.com



DRAWING

WORD SEARCH PUZZLE

ABSTRACT
ANGLE
ANIMALS
BRUSH
COLORS
COMIC
DESIGN
ERROR
FACES
FREE HAND
HUMANS
IDEAS
IMAGE
INK
LIGHT
LINES
MODEL
OUTLINE
PAD
PAPER
PENCIL
PERSPECTIVE
QUICK
SHADE
SURFACE
TINT
TONE
TRIAL

J P F X L S L I G H T N
G L G I H S U R B U C G
A M N E T S M R P A A I
B E F V O V E A F N B S
S N R I N R D C G A A E
T I E T E E L A E C D
R L E C E P E S D F B E
A T H E D A N I M A L S
C U A P A P I M A G E C
T O N S H H U M A N S O
R I D R S R O L O C B M
I N A E R R O R L D V I
A K Y P K C I U Q C E C
L I C N E P L T N I T L

The words appear UP, DOWN, BACKWARDS, and DIAGONALLY.
Find and circle each word.



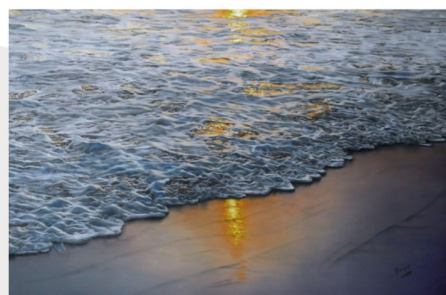
© 2021 Jodi Jill Not for Resale. Cannot be reposted online. Feel free to copy on paper and share!
www.puzzlestoplay.com

**The WSA Members
Exhibition will now be on
display until
approximately the end of
September/beginning of
October**

**(ArtsPost will re-open once
Hamilton is at Level 2)**

ArtsPost

6 August – 6 September 2021



Waikato Society of Arts Members' Exhibition 2021

As one of the oldest Art Societies in New Zealand, the Waikato Society of Arts is holding its Annual Exhibition. This year we display the work our members created during the past year of isolation, reflecting some common kiwi experience during this period, as our island home begins to emerge from isolation.

ArtsPost
Galleries & Shop
TE TOA ME TE POU WHAKA/RI

Open daily 10am-5pm
120 Victoria Street, Hamilton
07 838 6928
waikatomuseum.co.nz/artspost



Social Art Class

One of our fabulous tutors Rhiannon runs Monthly Social Art nights at the WSA. These are a fun relaxed evening that you can attend once or many times.

Held on the 1st Wednesday of each month from 6.30pm to 8pm.

All materials are provided including some treats. Rhiannon will guide you step by step to create a stunning piece of art to take home.

No experience needed.

Grab a friend and enrol now.

\$40

all materials inc

Monthly SOCIAL ART NIGHT

Next
session
Wednesday
6th October
6.30pm



Enrol online

www.wsa.org.nz

Monthly Funnies

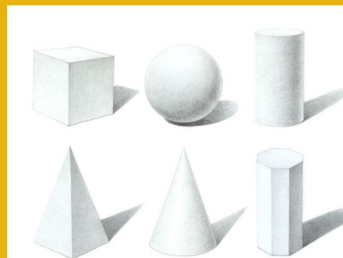
**I TOLD MY
HUSBAND,
"SEE? I CAN FIT
ALL MY CRAFT
SUPPLIES INTO
ONE BOX."
HE SAID "STOP
CALLING OUR
HOUSE A BOX."**

AGIRLANDAGLUEGUN.COM



OCTOBER SCHOOL HOLIDAY PROGRAMME

4TH OCTOBER - 15TH OCTOBER



Mon 4th Oct -Paint a forest & clay modelling

Tues 5th Oct -Drawing & Shading skills & Paper Crafts

Wed 6th Oct -Collage Art created by painting shades & patterns

Thur 7th Oct -Watercolour blending & experimenting

Fri 8th Oct -Oil Pastel Painting on black paper

Mon 11th Oct - Create with clay & Mix paint colours to create art

Tues 12th Oct -Craft Creations using a huge variety of materials & objects

Wed 13th Oct -Perspective drawing skills & Chalk pastel art

Thur 14th Oct -Textured abstract paint art

Fri 15th Oct -Mandala drawings & Oil Pastel & Dye art

5 - 12 years

9 AM - 12 PM

\$30 per child per day or \$35 if attending 5 days or more

ENROL ONLINE

WWW.WSA.ORG.NZ

Next Level Gallery

A recent exhibition in our gallery was tutor Zhe Li's Still Life & Portraiture Class and Acrylic. There was a great variety of art from this group. This was the 1st time most of the students had ever exhibited work. We hope this encourages them to continue on their art journey and exhibit again as comments from visitors were very positive.



Upcoming Exhibitions

Vivien's Class Exhibition

5th September to 18th September

X-Ray Exhibition

19th September to 29th September

Sue & Paulette's Watercolour classes Exhibition

30th September to 13th October

NEXT LEVEL GALLERY
is located upstairs at
120 Victoria Street
Hamilton
07 839 4481

Hours; Monday - Friday
8.30am-4pm
Saturday
9.30am-2.30pm.

Waikato Society of Arts

Membership Benefits

ENTRY INTO ANNUAL EXHIBITIONS

ARTIST PAGE ON WSA WEBSITE

MONTHLY NEWSLETTER

FREE ARTIST TALKS

FREE ACCESS TO OUR EXTENSIVE ART LIBRARY

DISCOUNTED WORKSHOPS

DISCOUNTED ART CLASSES

DISCOUNTED STUDIO HIRE

DISCOUNTS AT LOCAL BUSINESSES

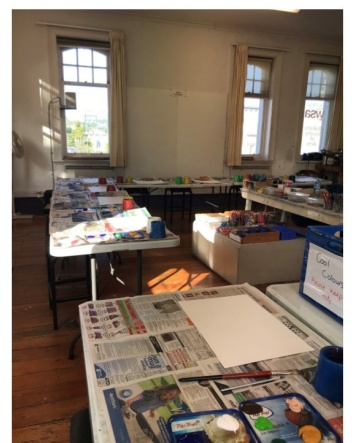
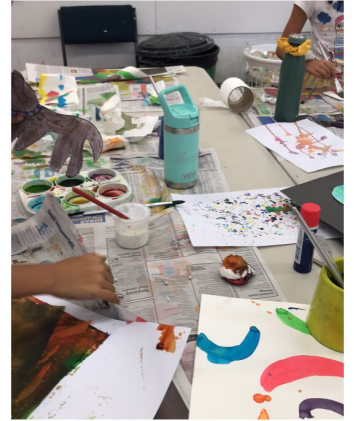
EXHIBITING IN OUR NEXT LEVEL GALLERY.....

Create or Renew
your membership
online www.wsa.org.nz
or email artschool@wsa.org.nz

wsa
art
WAIKATO SOCIETY OF ARTS

Classes in Action

Before lockdown some of our childrens' classes were busy bees creating lots of vibrant art. We are fortunate to have a wide range of art materials and mediums at the WSA for our students to learn and develop skills with. There is also time for lots of experimenting too. As well as learning skills in painting, drawing, charcoal, soft pastels, oil pastels, watercolour, etc we have clay, dye, printmaking, glue, glitter, fabric, wool, many papers, old stamps and magazines. Below are some examples of the more non traditional ways children have made art in either the School Holiday Programme or weekly art classes.



Haydns Artyfacts

Three cheers for Women Painters

9 **Berthe Morisot** (1841 ~ 1895)

In recent years Berthe has been re-appraised as not just the “feminine impressionist with a light touch” but at the cutting edge who was bold enough to explore the colour of light and take it to another level. In this way she was a leader and should be recognized as such. Berthe is quite the fashion plate here.

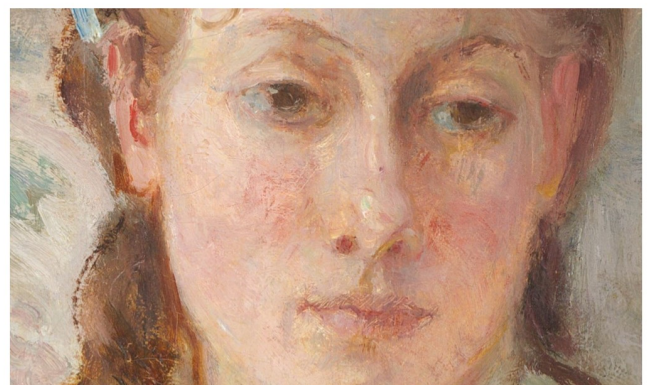
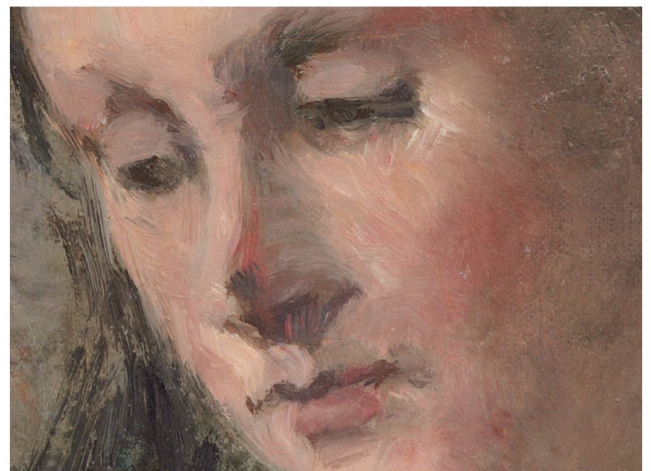
In her early days she was encouraged to paint alongside her sister Edme and they would copy works at the Museum. When Edme married, she gave up painting, but wrote wistful letters to her sister of how much she missed it.

“I am often with you in thought dear Berthe, I'm in your studio and I like to slip away, if only for a quarter of an hour, to breath that atmosphere that we shared for many years.”

Here she portrays her sister Edme and her mother on what seems an ordinary domestic scene but when we study the brush work close up, how lively and spontaneous it is!



The pinky sunlit face of her sister so delicately put together. The crisscross paint strokes making up the face of her mother is just magic. See how the whole patch-work just falls together.



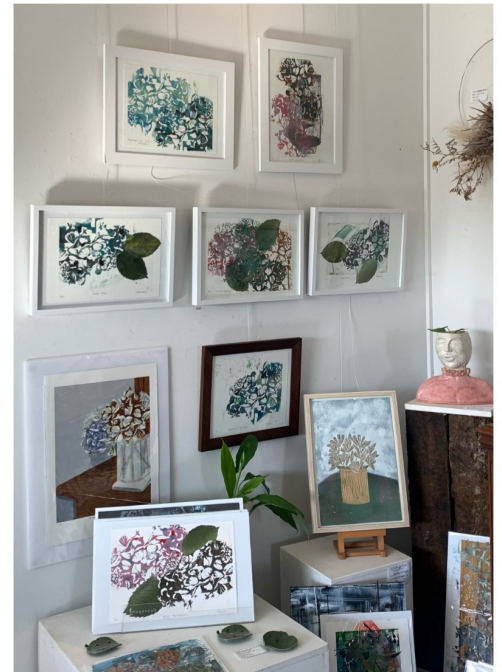
Independant Exhibition

One of our talented printmaking tutors Caroline Peacocke, has an exhibition not to be missed at 'The Garden Art Studio' (adjacent to Lilypad Cafe at 1234 Kaipaki Road, Cambridge.

11th August - 14th September

An auspicious 'soft opening' of my 'Heirloom Hydrangeas' exhibition opening at @thegardenartstudio 1234 Kaipaki Rd , Cambridge (adjacent to Lily Pad Cafe) on what would have been my grandfather's 100th birthday.

The great grandmother referenced below is actually my grandmother's mother-in-law / my aforementioned grandfather's mother.



HEIRLOOM HYDRANGEAS

From cuttings grown and passed down through the generations: from my great grandmother to my grandmother to my mother and to me. Cuttings also shared with friends & extended family.

Prints are all original pieces: oil based ink, printed from hand cut MDF and printed through a press.

Kind regards
Caroline Peacocke

Mb: (+64) 021 521 886
E: carolinepeacocke@gmail.com



Calendar of Events and Exhibitions



Term 3 Starts (9 weeks)	Monday 26th July
Artspost Members Exhibition	5th August to approx. end of Sept/beg Oct
Term 3 Ends	Saturday 2nd October
WSA AGM –120 Victoria Street	Monday 4th October - 6pm
October School Holiday Programme	4th October to 15th October
Term 4 Starts (8 weeks)	Saturday 16th October
Labour Day Public Holiday	Monday 25th October
WAIPRINT entries close	Wednesday 1st December, 2021
Term 4 Ends	Friday 17th December
WAIPRINT opens	Thursday 13th January, 2022
NZPPA Entries Close	Monday 7th February, 2022
National Youth Art Award (NYAA)	Thursday 10th February, 2022
New Zealand Paint & Printmaking Award (NZPPA)	Opens Friday 8th April, 2022

NEXT LEVEL GALLERY - CALENDAR

Nici Peacock's Class Exhibition	19th August to 4th September
Vivien's Classes Exhibition	5th September to 18th September
X-Ray Exhibition	19th September to 29th September
Sue & Paulette's Watercolour Class Exhibition	30th September to 13th October

WSA EXHIBITION SPACE

MAVIS & CO CAFÉ, BISTRO & BAR — ROTOTUNA

Ann Harlow	
Perceptions of Reality Exhibition	11th August to 15th September
Monica Schinkel	15th September to 13th October
Gemma Reid	13th October to 10th November

*Please note the changes to some dates above due to Covid Alert Level interruptions. These will differ from previous newsletter calendars. More information is on the front page of this newsletter and on our website www.wsa.org.nz or email Julie wsa@wsa.org.nz

September 2021

We would like to thank our sponsors for their support of the WSA.

chowhill

 **MidlandMRI**
MR IMAGING SPECIALISTS

 **Hamilton City Council**
Te kaunihera o Kirikiriroa



CREATIVE WAIKATO | AUHAHA TAINUI



Hamilton City

 **creative**
COMMUNITIES *nz*

YOUR
CFO
PARTNER

The key to a successful business

 **FORSYTH BARR**



TRUST WAIKATO
TE PUNA O WAIKATO


Riskadvice
business & personal insurance

FusionPrint
a division of Soar Printing Company Ltd.


Gordon Harris
THE ART & GRAPHIC STORE


MAVIS AND CO
café • bar • bistro


PRINT COUNCIL
AOTEAROA NEW ZEALAND

 **THE LION FOUNDATION**


FOUNDATION

40 YEARS OF THE
 **PERRY**
BRIAN PERRY CHARITABLE TRUST

 **Wintec**
WAIKATO INSTITUTE OF TECHNOLOGY
Te Kuratini o Waikato


WEL
ENERGY TRUST

Bustle

grassroots
TRUST
www.grassrootstrust.co.nz


DRAGON
COMMUNITY TRUST LTD

the **FRAMING WORKSHOP**

Poppies®
'My kind of bookshop'

carltonpartyhire
where all successful functions begin
hamilton

AUTEUR HOUSE
EST 2008


Blue Sky
COMMUNITY TRUST

 **First Sovereign**
TRUST



LIDO CINEMA
HAMILTON

Spring Colour Sale

SALE ENDS 02.11.2021

385 Anglesea st. Hamilton
WWW.GORDONHARRIS.CO.NZ



Gordon Harris
 THE ART & GRAPHIC STORE

FROM THE EDITOR – PAULETTE BRUNS

This WSA Art Connections Newsletter could not be created without contributions from members. If you have articles you think suitable for our newsletter, please let me know.

A very special thanks to **SHARP**, who continue to help us substantially with printing.

NEWSLETTER ADVERTISING RATES

A GREAT WAY TO SUPPORT THE WSA

Inserts- \$80 per page (*printed & delivered to WSA*)

Full Page - \$240 (*available only if space available*)

Half Page - \$120 colour

Quarter Page - \$70 colour

Opportunities, exhibitions & Member's short ads – up to five lines are free.

SHARP

Be Original.

WSA OFFICE AND ART SCHOOL

120 Victoria Street (above ArtsPost Gallery)

PO Box 1018, Hamilton 3240

07 839 4481

Office Hours:

Mon- Fri , 8.30am - 4pm

Sat 9.30am-2.30pm

artschool@wsa.org.nz for art school

wsa@wsa.org.nz for all WSA enquiries

Website: www.wsa.org.nz

Paulette works in the office 20 hours per week, if you need a faster reply please include Julies email wsa@wsa.org.nz

WSA EXECUTIVE COMMITTEE

Patron: Joan Fear

Committee: Michelle O'Brien
 Nicolas Wells
 Melany Sutherland
 Gemma Reid
 Gaye Jurisich
 Karen Taylor
 Treasurer & Chair: Rachael Hayton
 Hon. Solicitor: Charlotte Isaac
 Hon. Secretary: Julie Johnstone