

Members Exhibition 2020

We received over 140 entries for our current member's exhibition which is still on until 7th September. There is a fantastic variety and quality of art on display. For those who haven't been able to view the exhibition in person, we will be including photos in our October Newsletter.



Image: Detail, Brian Tucker, Never Unseen, 2019.



From the Office

Welcome to our September newsletter. Thank you to all our students and exhibitors for the flexibility and patience you have shown during the Level changes and uncertainty around dates.

Our Members exhibition opening was a nice night to get together at level 1 and enjoy catching up with friends we may not have seen in a while. We had 142 entries and the level of participation was fantastic, thank you for supporting our annual exhibition. Please don't forget to vote for the Midland MRI People's Choice Award.

Our term 4 classes are now ready for you to book online, with new classes having been added. Please take the time to look at the timetable and see if there is a class you would like to join. This is one small way we can continue to offer tutors classes at the WSA and be able to keep such talented, skilled artists in our learning environment. Thank you to Paulette, our WSA office administrator for all her hard work over a disruptive period with keeping all the classes on the timetable as up to date as possible and communicating with students and tutors in a constantly changing environment. It is a real pleasure working alongside Paulette in the office.

Our National Youth art awards received our highest amount of entries, 129, and our two Judges, Gaye Jurisich and Stuart Bridson, have selected 49 finalists. It is so interesting to see the outstanding work from our 13 to 25 year old NZ artists. The Waiprint and NYAA Opening and the NYAA prize giving evening will be on September 17th at 5.30pm in the ArtPost galleries if we are at Level 1. The exhibition itself will run alongside Waiprint from September 11th to October 12th.

The NZ Painting and Printmaking Awards are now closed and the judging has been completed by Julia Waite. We had an overwhelming response this year, which is fantastic and we are very grateful to all of those throughout NZ who entered. There were 408 entries and 56 finalists chosen.

Our AGM is coming up in the second week of October, so if you would like to apply to be on our committee, or a sub-committee, please make sure you are nominated when the forms come out next month. We are always looking for people who can enhance the current executive and who may have specialised skills in an area we would like to develop. If you would like to know more please email me at the WSA office.

Take care and be kind.

September 2020

NYAA EXHIBITION

Friday 11th September

To

Monday 12th October

ARTSPOST GALLERIES

120 Victoria Street

HAMILTON

PRIZE GIVING

Thursday 17th September

@5.30pm



NATIONAL YOUTH ART AWARDS 2020 FINALISTS

CONGRATULATIONS!

Ella Adams
Katie Li
Yeon Seo Kim
Danae Smith
Alysse Klages-Bowskill
Fabian Strauch
Madeleine Cunliffe
Ko Lohrer
Pep Roongnirandon
Frankie Vegas
Aderyn-Carol Panton
Payge Ovenstone
Rose Hird
Poppy Campbell
Monica Faumui
Molly Simes
Lauren Bell
Jorja Perko
John Cheng Yi Xie
Tam Yuen Ying
Christina Xiao
Ben Westwood

Amelia Newhouse
Hyerin Cho
Zoe Bracegirdle
Amy Barnes
Athena Lyu
Abigail Blewden
Nyle Turuwheua
Blake Moulder-Aitken
William Parrott
Tessa Barry
Johanna Vreede
Odin Roberts
Jenique Labuschagne
Jason Jiang
Nicola Walsh
Bonny Koehn-Turton
Eli Molloy-Wolt
Georgia Arnold
Hannah Ireland
Lexi Kerr
Gavin Chai
Victoria Miles

WAIPRINT 2020

There's a new date for our joint 'opening' with the NYAA. Due to restricted numbers in Level 2, we're now gathering on Thursday, 17th September, at 5.30. However, the exhibition will be open from Friday morning, the 11th September.

Our guest artist, Ruth Davey, will be showing nine pieces spanning three decades and more of her work will be available upstairs in the Next Level Gallery. The proceeds from all sales of her prints go to the new Ruth Davey Merit in Printmaking award at the New Zealand Painting and Printmaking Awards in October.

WAIPRINT and the NLG exhibition open on Friday, 11th September. Entries for WAIPRINT are due Wednesday, 2nd September (form and fee), and the last date to deliver your work is Monday, 7th September.

Image: Ruth Davey, Icons 1/1 (detail), woodcut



WAIPRINT Workshop

There are still places available in this year's workshop:
Printing Outside the Frame.

Gemma Reid will teach us techniques for using collagraph and drypoint to print on non-traditional surfaces with Akua water-based inks.

The workshop will be in the WSA Print Rooms on 12th and 13th September.

You can see some of Gemma's work at www.instagram.com/gemmareidartist or in the current WSA Members' show at ArtsPost.

Contact Janice Meadows to register your interest and save a place: jmeadows51@gmail.com

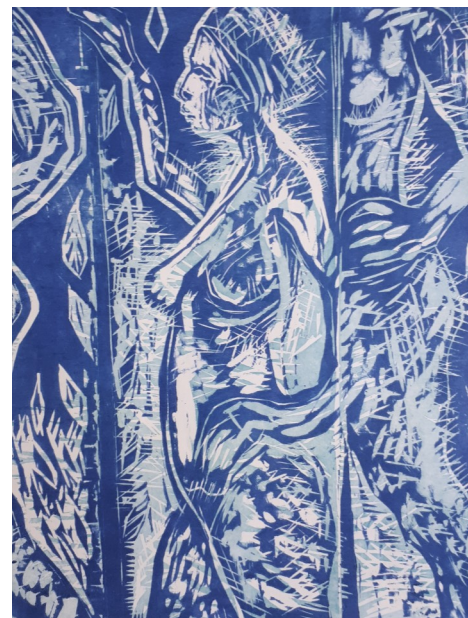
Ruth Davey: Print Parade

Next Level Gallery

11th September to 12th October

Open 8.30 to 4.00pm weekdays
and 9.30 to 3.00pm on Saturday

Image: Ruth Davey, Parade, woodcut



September 2020

NZPPA Update

Entries for the 2020 NZPPA closed almost 2 weeks ago and we are pleased to let you know that we have received an outstanding range of entries totalling 408! This is our highest number of entries ever, so thank you to all of our 2020 entrants!

This year's judge Julia Waite has reported on the high calibre of paintings and prints. There has been 56 finalists chosen from both painting and printmaking.

NZPPA Opening & Prize giving

Friday 2nd October at 5.30pm

NZPPA Judges Talk

Saturday 3rd October at 10.00am

PCANZ Talk

Saturday 3rd October

NZPPA Exhibition 3rd October to 5th October

The Atrium, Tristram Street, Wintec City Campus.



New Zealand Painting and Printmaking Award Finalists for 2020

CONGRATULATIONS!

Mark Dustin
Alexis Neal
Tori Beeche
Mark Graver
Graham Hall
Meg Wilson
Antony Densham
Laura Williams
Krystie Wade
Celia Walker
Fiona van Oyen
Yonel Watene
Beth Charles
Merthyr Ruxton
Cat Fooks
Lesley Knight
Stella Corkery
Kitty Fehlmann
Tonia Geddes
Luca Nicholas
Alan Ibell
Kristy Gorman
Terri Greenem
David Brown
Nadia Gush
Amanda Wilkinson
Michaela Stoneman
Jennie de Groot

Janna van Hasselt
Tira Walsh
Marci Tackett
Oliver Cain
Reece King
Matthew Browne
Steve Lovett
Niki Hill
Fiona Lee Graham
Natchez Hudson
Peter McLaren
Yvonne Abercrombie
Olivia Chamberlain
Stephanie Postles
Deborah Moss
Eliot Coates
Rachel Peary
Cathy Tuato'o Ross
Belinda Griffiths
Frances Rood
Jennifer Huebert
Lauren Drescher
Michael Ebel
Geoff McGowan
Rebecca Wallis
Marie Strauss
Jolene Pascoe

WSA History

We thought it would be nice to put little excerpts into our monthly newsletter about the history of the WSA. The excerpt below is from 'Moves Afoot - A supplementary history of the WSA 1983-2009' by Megan Lyon

(Following on from last months excerpt about the 'The Studio Gallery' which the WSA operated from approximately 1970 to 1983 on the corner of Anglesea and Clarence Streets.) After which time they opened a new gallery in the former Hamilton Hotel at 192 Victoria Street. The gallery had been purchased by Robert (Rob) Gardiner, a former WSA president and member since the 1950's, trustee of the Chartwell Trust and later patron. Favourable lease arrangements were put in place by Gardiner for the WSA. He recalls that; "The space was developed as a gallery with supporting facilities (including lighting, toilet, parking and access to the rear courtyard) with costs contributed by Chartwell and the use of the premises was free to WSA for a long period, I think 15 years. It was the period between the closure of the facilities used by the WSA opposite the courthouse and the move to Artspost. This was also the period when the school operated from the Ward Street premises until the school also moved to Artspost. Chartwell also developed and provided to WSA a lounge space upstairs accessed by the stairs which were built adjacent to the entry door to the WSA Gallery. For openings and so forth the parking at the rear of the Arts centre was available to members "

To be continued...



Sculpture Park News

Dear Friends and Supporters

Thank you to all of you who appreciate the park and have continued to promote it to others. The time has come for us to actively talk about succession. You may consider playing a role in the next stage of the park and its presence in the community so please mark these dates in your diary.

Invitation

Together with a panel of supporters, we are in the process of setting up a charitable trust to ensure the park's future. The key to an effective and enduring trust is a good quality board and committed volunteers with a wide range of skills.

If you are interested in the park's future, please register your interest by **Friday, 11th September** by emailing sculpturepark1@gmail.com so we can send you more information about how the Trust would operate.

Just briefly the intention for the **Art-in-Nature Arboretum Trust** is:

To see the park used to its full potential by the community and recognized as a regional resource of botanical, cultural and recreational significance. The art-in-nature experience invites generations in a family to come out together, groups of friends to share a walk, and children to be outdoors on a creative adventure.

Invitation

Formation of Art-in-Nature Arboretum Trust meeting:

7pm, Monday, 21st September 2020

Hamilton Gardens WINTEC horticultural meeting room

RSVP: sculpturepark1@gmail.com

Please mark **7pm Monday 21st September** in your diary. On that evening, the panel of supporters will be calling a meeting at WINTEC Horticultural campus, Hamilton Gardens. The purpose of the meeting will be to explain the intentions of the Trust and the process of appointing trustees.

Tutor Profile



**Enrol online
now for
term 4
www.wsa.org.nz**

Creature Design
13 - 18 years
12th October
8 weeks
6.15pm - 7.45pm
www.wsa.org.nz

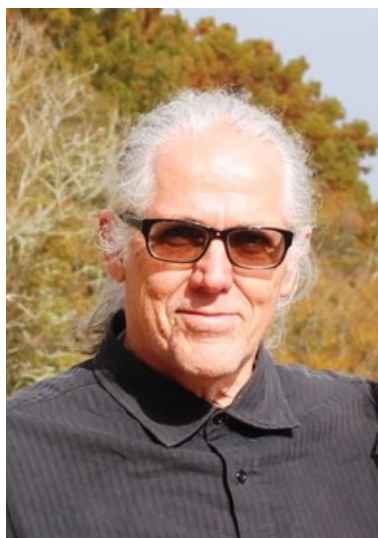
Anya is a writer, filmmaker and multimedia visual artist. She has a First Class Honours in Fine Arts and a Master of Creative Writing majoring in Screenwriting. In her own work, Anya likes to find human truth within the unusual and absurd.

Anya remembers the struggle of being a creative child/teen when the arts were often undervalued compared to other subjects, and the negative impact this had on her self-esteem. Everyone learns and expresses themselves differently. Anya is passionate about creating a space where the individual brilliance of a child/teen can be fostered, so they may excel in their creative endeavours and grow a positive sense of self.

WSA art
WAIKATO SOCIETY OF ARTS
8 - 12 years
Creative Writing
Tuesday 13th October
4pm - 5pm
8 Weeks
www.wsa.org.nz

**TEENAGERS
CREATIVE WRITING**
13 - 18 YEARS
Tuesday 13th October
5.30pm to 7pm
8 weeks
WSA art
WAIKATO SOCIETY OF ARTS
www.wsa.org.nz

Tutor Profile



Pieter Swanepoel has been involved in the visual arts all of his life.

He has worked in a variety of fields, including art criticism, photography, illustration, design, education and as an independent artist, having exhibitions of his own work.

As an educator he taught at a number of secondary and tertiary institutions in South Africa before immigrating to New Zealand. He settled in Hamilton some five years ago and has tutored various classes here since.

Enrol online now for term 4

www.wsa.org.nz

Pastel Painting

The Goddess
Portrayed

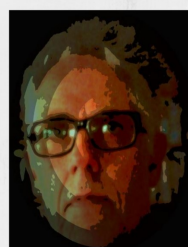
Like the "Selfie" portrait classes by Pieter Swanepoel these classes will be in a "project" format. This simply means that there is a lot of emphasis on the process, or then the development towards what will be a final artwork, which, in this case will be in the pastel medium. The Goddess Portrayed will be an exploration of looking at what it is that makes a goddess, historically as well as in our contemporary, daily lives. The Goddess may be someone important or famous within our society or perhaps even from a world outside our own. But then again, the Goddess may be an inner self. This is why it is important that the actual 'final' artwork will be the result of an extensive process aimed at portraying not only the physical, but indeed also the spiritual aspects of such a Goddess.

Tuesday 13th
October
1pm - 2.30pm
8 weeks
www.wsa.org.nz



Oil or Acrylic

PORTRAIT OF THE ARTIST AS A SELFIE



**12th October
1pm - 2.30pm
8 weeks**

These painting classes will take the form of a "project". As such it is as much about the process as it is about the final painting, which will be in a medium of choice. The selfie will be explored through a series of selfie-portraits taken in whatever way possible. Such initial images will then be processed to become part of an artwork which will be the result of an entire process, rather than a simple copy of a realistic photographic self-portrait. Here are two samples prepared to show which way such a Portrait of the Artist as a Selfie might turn out.



www.wsa.org.nz

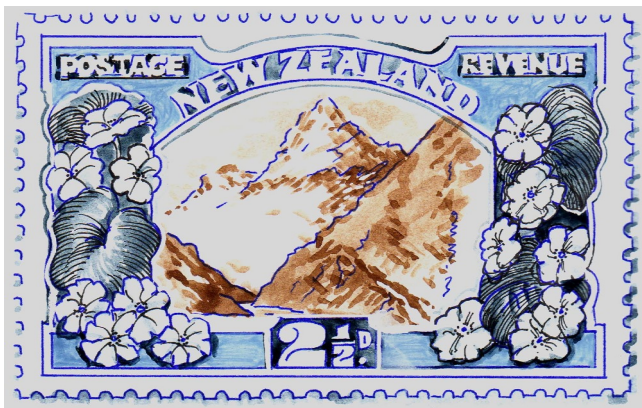


**Please express your interest if you want to exhibit at The NEXT LEVEL
GALLERY in 2021.**

Email the office at wsa@wsa.org.nz

My stamp paintings.. by Haydn

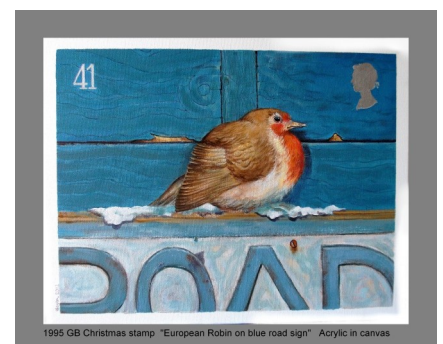
One wet Sunday when I lived in Pukekohe I went along to their local Stamp Club. It was Christmas breakup, they were playing games and not a stamp in sight. However they were so friendly I went back and soon was doing their Monthly scrapbook. Yvonne their president even sent me a card when I was in hospital. I have not yet forgot. Well one Christmas breakup I did a quick paint job of Santa saving stamps. So keen on that they auctioned it off for a \$100. Two other members wanted a copy. I made friends there who would give me rare stamps for a painting. So I have a very good collection you see.



These two were done for the Scrap book. My Favourite NZ stamps.

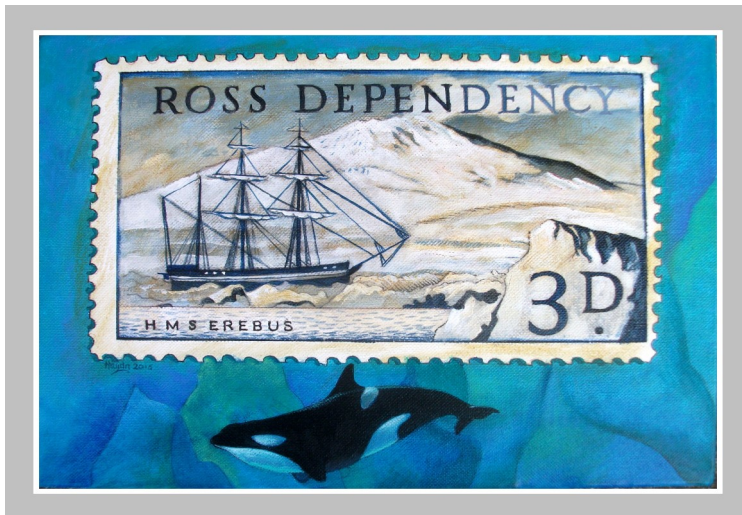


Well then I was on to something. They liked my paintings. So every now and then I would bring one along, they would raffle it off and the winner would keep it for six months, bring it back and someone else could enjoy it. Even the children there. So far I have done 17 paintings. Many with a Christmas theme. I won the shield one year. They made me an honorary member, how about that? I am now trying to downsize my huge



Even the Mayor Heather liked her painting so much, I said "Go on, keep it." Big smile.

My friend Trevor was quite crafty, he would pull out his wallet and show me a real beauty.
 "What do you think Haydn?" Nice. So?
 "Well I want my portrait painted." That man ended up with a half dozen paintings of his chosen subjects and I ended up with the earliest NZ Queen Victorias you don't see any more.
 Happy deals.



With the demise of letter writing the Post Office has reduced it's services and you might think that might be the end of philately. But the strength of the club like any is in its fellowship and support of one another. That is why we are glad Lock down is over.

There are still more stamps out there more than you could poke a stick at. Rare ones too you can hanker after if you really really want.

Philately will get you nowhere. Not true.

I have been invited up the the club to give a talk. I am going to do a talk with slides on the great engravers of stamps. They are the real works of art when you think they had to engrave the name and price of the stamp back wards is it or in reverse? I will also present my last painting in memory of my friend.



Vivien's Childrens Exhibition

The 7th Children's Art Exhibition Opening

The art presented in this exhibition is work that has been completed from August 2019 to August 2020. The work has been carried out in the Exploring Art Techniques classes, a course held at the Waikato School of Art for children aged 8 to 15 years of age. It is scheduled for Mondays, Tuesdays and Thursdays after school from 4pm to 5.30pm. The opening of the exhibition was held at 4pm on Tuesday 15th at the Trust Waikato building in Little London Lane. To have such a fabulous setting once again is received with gratitude. The event was attended by approximately 90 parents, grandparents, students, siblings and other relatives and we had a very pleasant and rewarding evening. The Cambridge Brass Quintet provided background music which is always appreciated by young and old. A separate 'studio' was set up as is usual in an adjoining room where art 'inspirations' and 'suggestions' were provided. Parents and their children made use of this activity room enthusiastically and there was sharing of the art they produced. As with every aspect of our lives, Covid-19 and the lockdown had an influence on the programme experienced by the children. The topics covered over this year were not as many but the classes reassembled quickly and it was a pleasure to present beautiful work. Our cultural experience has been considering Maori motifs used in weaving, wood carving, tukutuku and rafter painting and we considered Maori art and its use in our environment. A favourite animal was chosen to consider shading techniques using dye instead of water colour paints. Some students took their first steps into canvas painting using photos of their pets and with acrylic paints produced some beautiful portraits which are in the 'Pets Corner'. These pets became very familiar to us all as we knew them by name and discussed their attributes and foibles. Learning to plan a balanced picture is important and for this we studied the life and environment of the Great Barrier Reef in Australia. By using collage as a technique we were able to talk about aspects of picture presentation. When the last exhibition was presented some students had completed scientific paintings of Monarch butterflies and in this exhibition there are pictures to show the 'deconstruction' of their original studies and the provision of alternative ways of presenting reality. Many students looked at 'patterns in nature' as a general motif and this provided a wide set of ideas to work with. The exhibition moves to the Next Level Gallery, WSA on Monday 24th August for 2 weeks. Vivien Hendy (Tutor)



Creative at Home Packs

We have been busy creating a range of Art Activity Packs geared mainly towards children & youth, but of course they can be enjoyed by any age group (adults included 😊).

Each pack includes **EVERYTHING** you will need to complete the activity eg. Glue, scissors, pencil, eraser, paint, paper etc. They also come with instruction sheets & several packs have more than one activity for different ability levels Easy, Medium, Hard.

The packs are for sale for \$10 - \$14 each or save & buy 10 packs for \$90. You can purchase the packs by emailing artschool@wsa.org.nz or phoning 07 839 4481. Packs can either be collected from the office at the WSA or we can courier for \$9 within NZ. Rural delivery add extra \$3. We plan to add more packs so that you have a great variety to pick from for now and in the future.

Save & buy 10 packs for \$90

LEARN ABOUT THE COLOUR WHEEL

Pack includes everything needed to complete the activity.

www.wsa.org.nz
artschool@wsa.org.nz
 07 839 4481
 120 Victoria Street,
 Hamilton..

- Instruction Sheet
- 4 Activities
- Blank colour wheel
- Primary, secondary, tertiary
- Mixing Colours
- Warm & Cool
- Paper
- Non toxic paint
- Paint brush
- Colour pencils
- Pencil
- Eraser
- Sharpener

\$12

WATER COLOUR PAINTING

Pack includes everything needed to complete the activity.

www.wsa.org.nz
artschool@wsa.org.nz
 07 839 4481
 120 Victoria Street,
 Hamilton..

- Instruction Sheet
- Examples
- Paper
- Watercolour paints
- Paint brush
- Black pen
- Pencil
- Eraser
- Sharpener

\$12

COLOURED PAPER ARTWORKS

Pack includes everything needed to complete the activity.

www.wsa.org.nz
artschool@wsa.org.nz
 07 839 4481
 120 Victoria Street,
 Hamilton..

- Instruction Sheet
- Examples
- Coloured Paper
- White Card
- Glue Stick
- Scissors
- Pencil
- Eraser
- Sharpener

\$10

LEARN TO DRAW UPSIDE DOWN

Pack includes everything needed to complete the activity.

www.wsa.org.nz
artschool@wsa.org.nz
 07 839 4481
 120 Victoria Street,
 Hamilton..

- Instruction Sheet
- 8 Pictures to draw
- 2 Easy
- 2 Medium
- 2 Hard
- 2 Advanced
- Grid paper
- Colour pencils
- Pencil
- Eraser
- Sharpener

\$10

DOT PAINTING

Pack includes everything needed to complete the activity.

www.wsa.org.nz
artschool@wsa.org.nz
 07 839 4481
 120 Victoria Street,
 Hamilton..

- Instruction Sheet
- Examples
- Black Paper
- Cotton buds
- Non-toxic paints
- Circle Templates
- Pencil
- Eraser
- Sharpener

\$10

MANDALA CREATIONS

Pack includes everything needed to complete the activity.

www.wsa.org.nz
artschool@wsa.org.nz
 07 839 4481
 120 Victoria Street,
 Hamilton..

- Instruction Sheet
- Examples
- Pattern Templates
- 6 Basic & 6 Advanced
- Paper
- Colour pencils
- Pencil
- Eraser
- Sharpener

\$10

LEARN TO DRAW STEP BY STEP

Pack includes everything needed to complete the activity.

www.wsa.org.nz
artschool@wsa.org.nz
 07 839 4481
 120 Victoria Street,
 Hamilton..

- Instruction Sheet
- 8 Pictures to draw
- 2 Easy
- 2 Medium
- 2 Hard
- 2 Advanced
- Paper
- Colour pencils
- Pencil
- Eraser
- Sharpener

\$10

PAPER SNOW FLAKES

Pack includes everything needed to complete the activity.

www.wsa.org.nz
artschool@wsa.org.nz
 07 839 4481
 120 Victoria Street,
 Hamilton..

- Instruction Sheet
- Examples
- Coloured paper
- White Paper
- Glue stick
- Scissors
- Pencil
- Eraser
- Sharpener

\$10

PAINT A SUNSET

Pack includes everything needed to complete the activity.

www.wsa.org.nz
artschool@wsa.org.nz
 07 839 4481
 120 Victoria Street,
 Hamilton..

- Instruction Sheet
- Non toxic paints
- Paint brushes
- Paper

\$12

CREATE WITH CLAY

Pack includes everything needed to complete the activity.

www.wsa.org.nz
artschool@wsa.org.nz
 07 839 4481
 120 Victoria Street,
 Hamilton..

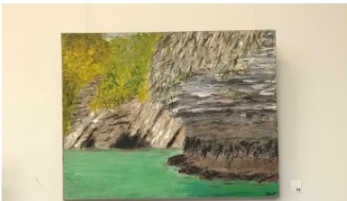
- Instruction Sheet
- 4 activities
- pinch pot
- clay rose
- mobile phone holder
- pencil holder
- Detail stick
- Clay

\$14

September 2020

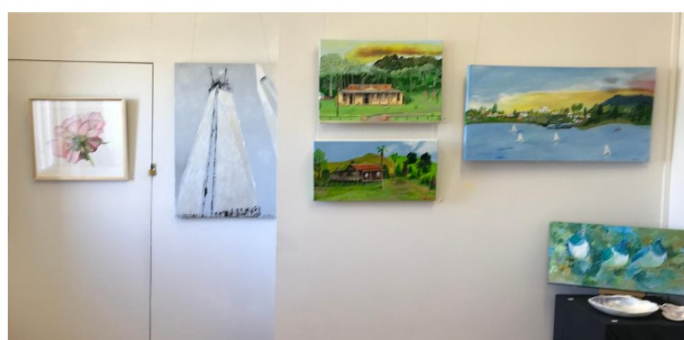
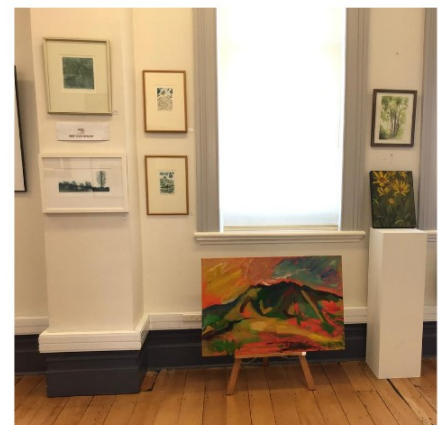
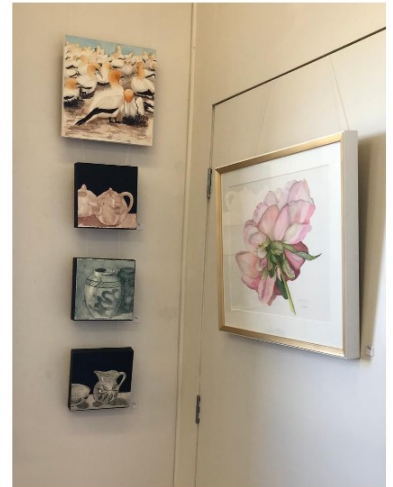
Next Level Gallery - Nici's Class Exhibition

Nici Peacocks Painting & Drawing Class recently had a stunning exhibition in our Next Level Gallery,



Next Level Gallery - Life Members Exhibition

Another recent exhibition we had on display was a fabulous collection from our WSA Life Members including several Ruth Davey Prints.



Calendar of Events and Exhibitions



ARTSPOST Members Exhibition	7th August—7th September
Waiprint Entries Close	2nd September
NYAA & Waiprint Exhibition	11th September—12th October
NYAA & Waiprint Prize giving Evening	17th September @5.30pm (ARTSPOST)
NZPPA Opening & Prize giving	Friday 2nd October @5.30pm
Term 4 Starts	Monday 12th October (8weeks)
NZPPA Judges Talk	Saturday 3rd October @10am
PCANZ Talk	Saturday 3rd October
NZPPA Exhibition	3rd October—5th October

NEXT LEVEL GALLERY - CALENDAR

NLG Vivien's Class Exhibition	23rd August—6th September
NLG Ruth Davey Print Exhibition	10th September—12th October
NLG Peter Garland Exhibition	13th October—3rd November
NLG Felipe Queriquelli Exhibition	4th November—16th November
NLG Ellie's 13-18 year olds class Exhibit	17th November-25th November
NLG Carril & Dudri's Exhibition	26th November—2nd December
NLG Xmas Cash & Carry Exhibition	3rd December-16th December

For hire:

8 interlocking display panels. 1200mm x 1500mm with 2100mm high stands. \$20 per panel, you will need a minimum of 3 to support free standing. Contact the WSA office for more information or bookings.

wsa@wsa.org.nz

07 8394481



WAIKATO SOCIETY OF ARTS

WAIKATO SOCIETY OF ARTS

STUDIO HIRE & BIRTHDAY PARTIES

contact wsa@wsa.org.nz for more info
or 07 839 4481 or www.wsa.org.nz

If you would like to hire one of our studios for a Birthday Party, run a workshop, have a meeting or anything else where you need a space; then contact our office to see what we can do to make it work for you.

Our parties can be run by us; you can choose from several themes or we can follow what you would like & you can supply your own materials. Generally they run for 1-2 & half hours depending on age.

If you are holding a workshop or a meeting we have several options along with a digital projector available for use. We can accommodate most requests day or evening.

We would like to thank our sponsors for their support of the WSA.



Wintec
WAIKATO INSTITUTE OF TECHNOLOGY
Te Kuratini o Waikato



MidlandMRI
MR IMAGING SPECIALISTS

THE PHILIP VELA FAMILY TRUST

KOROK 
FIRE AND ACOUSTIC WALL SYSTEMS

Hamilton City

 **creative**
COMMUNITIES *nz*



THE LION
FOUNDATION

grassroots
TRUST
www.grassrootstrust.co.nz



CREATIVE WAIKATO | AUHAHA
TAINUI

40 YEARS OF THE
 **PERRY**
BRIAN PERRY CHARITABLE TRUST

area

Gordon Harris
THE ART & GRAPHIC STORE

pc
PRINT COUNCIL
AOTEAROA NEW ZEALAND



TRUST WAIKATO
TE PUNA O WAIKATO

Riskadvice
business & personal insurance



chowhill

FusionPrint
a division of Soar Printing Company Ltd.

 **Hamilton City Council**
Te kaunihera o Kirikiriroa

carltonpartyhire
where all successful functions begin
hamilton

the **FRAMING
WORKSHOP**

 **First Sovereign**
TRUST

Blue Sky
COMMUNITY TRUST

Poppies
'My kind of bookshop'



Sir John Logan Campbell Residuary Estate



warehouse
stationery

WEL
ENERGY
TRUST

AUTEUR HOUSE
EST 2000

New Zealand Post 



LIDO CINEMA
HAMILTON

spring colour sale

Online
& Instore

385 ANGLESEA STREET
HAMILTON



www.gordonharris.co.nz

UP TO 25% OFF ARTISTS' QUALITY PAINTS

SALE ENDS 3/11/2020

FROM THE EDITOR –PAULETTE BRUNS

This WSA Art Connections Newsletter could not be created without contributions from members.

If you have articles you think suitable for our newsletter, please let me know.

A very special thanks to **SHARP**, who continue to help us substantially with printing, and Warehouse Stationery, corner Ward and Anglesea Street, for copy paper.

NEWSLETTER ADVERTISING RATES

A GREAT WAY TO SUPPORT THE WSA

Inserts \$80 per page (printed and delivered to WSA)

Full Page \$240 (available only if space available)

Half Page \$120 colour

Quarter Page \$70 colour

Opportunities and exhibitions

and Member's short ads – up to five lines are free.



warehouse
stationery

WSA EXECUTIVE COMMITTEE

Patron: Joan Fear

President:

Committee: Michelle O'Brien

Mark Dyer

Nicholas Wells

Melany Sutherland

Gemma Reid

Treasurer:

Rachael Hayton

Hon. Solicitor:

Charlotte Isaac

Hon. Secretary:

Julie Johnstone

SHARP

Be Original.

WSA OFFICE AND ART SCHOOL

120 Victoria Street, above ArtsPost Gallery

PO Box 1018, Hamilton 3240, Phone 07 839 4481

Mo - Fri , 8.30am - 4pm

artschool@wsa.org.nz for art school

wsa@wsa.org.nz for all WSA enquiries

Website: www.wsa.org.nz