



Art Connections

WAIKATO SOCIETY OF ARTS

PO Box 1018 Hamilton 3240 www.wsa.org.nz

Welcome to our October 2021 newsletter.

Our Annual General Meeting is being held on October 4th at 6pm in the downstairs Print room studio. Please let the office know if you will be attending so we can make sure we are following social distancing rules for groups.

We hope you are all coping with the current level restrictions and are keeping well, staying busy and your family and friends are all safe, especially those in Auckland at the moment. The lockdowns affect our art classes and exhibitions greatly and cause a lot of disruption for the tutors, students, exhibitors and administration. We have now absorbed several lockdowns, which have halted our operations at the school and created a lot of class fees being refunded back to students who have been patient during this current term 3 interruption. Fortunately we have received the wage subsidy so this has not affected our tutors being paid. Each time we have had to stop classes we have been able to continue to pay our tutors, which has been very important to the Executive to make sure they feel secure in this part of their professional lives. However, due to classes being refunded, in some cases 7 out of the 9 weeks, in this term alone, we have had to raise the class fees for term 4 as the school has consistently lost money for some time now. The reality is that as a not for profit organisation, our aim is not about making a huge profit but we do still have to break even and with a diminishing funding pool, rising operating costs and Covid this is a necessary part of keeping the school sustainable. We still continue to provide small class numbers, qualified art tutors and materials being included in the children's classes, as well as our prices being low, compared to other private art schools. At the WSA, on average, students are paying between \$11-\$15/hour. We appreciate the financial investment our students put in to their classes and do not take this rise in fees lightly but to continue into the future, hopefully for as long as we have already been operating, this needs to be done. If you wish to discuss this further please contact Julie in the office.

The Members exhibition has been extended until October 11th and will come down on Tuesday the 12th at 10am. You can pick up your work from ArtsPost directly that morning otherwise at the WSA upstairs in the afternoon. Thank you to everyone who exhibited this year we have had a lot of great feedback about the art and a few successful sales, much to the artist's surprise and delight.

The National Youth Art Awards have been postponed until the Opening on February 10, 2022. Hopefully our 47 finalists will still be able to make the awards and enjoy the exhibition along with their family and friends. Congratulations to all the entrants who took great pride in their work, it takes a lot of courage to have this judged. Thank you to our sponsors who have been amazing with the changes we have had to make.

Thank you to one of the Society's long time students, Gillian Bigham for donating her art supplies to the WSA. There were many eager tutors and students who managed to claim treasures from all the boxes and our library has also benefitted from her generosity.

New additions to our library have also come from the Dragon Community Trust who gave us funding for new books. If you are wanting to help with keeping our library in order please contact the office.

This week is Mental Health Awareness week. Please try to take the time to speak to people you know may live alone or to just have a conversation with a friend or colleague that you normally wouldn't make time for. It can go a long way to how someone's day is going and make them feel like what they have to say matters. www.mhaw.nz/

Thank you to all our volunteers and the friendly faces that come into the office, we are fortunate to have such a supportive group of members, students, artists and public involved with the WSA.

"Believe you can and you're halfway there" – Theodore Roosevelt

Julie

NZPPA Update

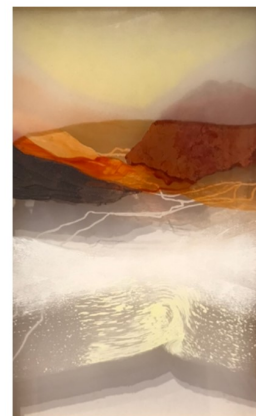
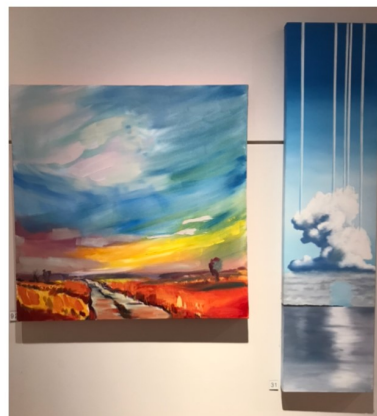
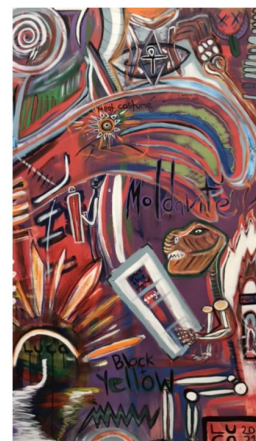
The New Zealand Painting and Printmaking Awards have also had to be moved from the Opening this month to April 2022. On a positive note, this allows artists to continue on their entries through until the close off date of February 7, 2022. We look forward to receiving these over the next few months and for having your continued support of this prestigious event on the art calendar. Thank you to the Hamilton Gardens for managing to shift our exhibition period. This will lead into the annual awards being held in April from hereon in. This aligns with our planning of moving the awards back to the Gardens and having it closer to the annual Summer Gardens Festival. Again, we have been lucky for the flexibility from our sponsors to happily move their sponsorship to next year.



**The awards will open from Friday, April 8th (at the Hamilton Gardens Pavillion),
with the Judges talk on Saturday, April 9th, 2022**

2021 Artpost Members Exhibition

Below are just a few photos of some of the stunning artworks in our 2021 Artpost Members Exhibition which can still be viewed until Monday 11th October.



Term 4 Classes

THE CREATIVE Spark



10am - 12pm

8 weeks - Starting Tuesday 19th October

TEENAGERS CREATIVE WRITING



13 - 18
years

5.30pm - 7pm

8 weeks - Starts Tuesday 19th August

Sculpting Creatures

ALL MATERIALS INC



12 years + including adults

8 weeks - Starting 18th October

4pm - 5.30pm

Acrylic Painting

Thursday Afternoons

Work with WSA tutor,
Sybille, to find a fresh
way of working with
Acrylic paints.
Beginners welcome.

Starting
21st October

12.30pm - 2.30pm

Enrol online www.wsa.org.nz



Spaces Available

OBSERVATIONAL DRAWING 16+

8 weeks

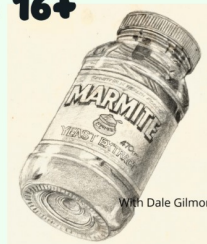
Starting
Monday
18th October

4pm - 6.15pm

Do you want to learn to draw or do you
want to hone previously acquired skills?

This course is for all, from beginner to
advanced. For beginners we will look at
the rules for drawing and progress from
there. For more advanced students a
brief revisit of the basics will refresh your
memories and skills. It will be challenging,
are you up for it?

All equipment will be supplied.



With Dale Gilmore



Enrol online www.wsa.org.nz

Spaces Available

OBSERVATIONAL DRAWING

8 weeks

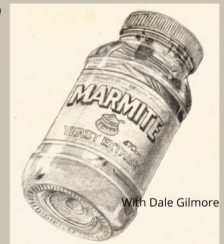
Starting
Wednesday
20th October

9.30am - 12pm

Do you want to learn to draw or do you
want to hone previously acquired skills?

This course is for all, from beginner to
advanced. For beginners we will look at
the rules for drawing and progress from
there. For more advanced students a
brief revisit of the basics will refresh your
memories and skills. It will be challenging,
are you up for it?

All equipment will be supplied.



With Dale Gilmore



Enrol online www.wsa.org.nz

Spaces Available

Oil Painting Class

Monday Evenings

Starting 18th October



6.30pm - 8.30pm

Talented tutor Dale Gilmore will teach you tips & techniques to paint with
Oil Paints. Beginners and continuers are welcome. Materials provided 1st
lesson.

Enrol online www.wsa.org.nz

Creative Writing

8 - 12
years



WEEKS

4pm - 5pm

Starting Tuesday 19th October

Spaces Available

MONDAY EVENINGS

Experimental Printmaking

Come and be tutored by the extremely skilled and talented printmaker
Caroline Peacocke



8 WEEKS
STARTING 18TH
OCTOBER

Enrol online www.wsa.org.nz

Next Level Gallery

A recent exhibition in our gallery was from tutor Vivien Hendy's students. The children's art was a stunning vibrant display, showing their many artistic talents.

Below are some photos of the exhibition and an article from their tutor Vivien.



8th Exhibition of Youth Art

Exploring Art Techniques Classes

Where has 8 years gone? You can ask that of the last year also – but here we are at the 8th Youth Art Exhibition. It has been a broken year with another lockdown to contend with but the hard and dedicated work from the students has continued. We have had no 'opening' party and no exhibition at Trust Waikato this year but our booking at Next Level Gallery, WSA was perfectly timed, the work had been submitted and waiting for an opportunity to be displayed.

What have we done this last year? For the Advanced Exploring Art Techniques class, a journey into the past looking at Greco-Roman mosaics provided a cultural experience. The work produced was painstaking, methodical and really enjoyed by the students. We all thank Resenes for the contribution of their paint sample cards which provided excellent material to work with and led to an understanding of development of paint colour mixing.

The imagination ran riot over the use of the glass cabachons as the students had two (or more) to play with. Animal faces, spider bodies and flowers provided the main themes.

Considering pre-historic fish, again provided a chance to use imagination as students put 'flesh' around fossil fish. The resource used was a book by R.Troll who has made a lifetime occupation travelling the U.S.A. educating young people (and older ones too) in the many exhibitions of his art on fossil fish.

Another activity was a cultural visit to the ancient peoples in Mesa Verde, Arizona to look at their pottery. This gave the chance to study drawing three dimensional objects and their decoration 'in the round'. The students considered what designs were used on these pots and why and found the animals and insects came from the environment, the canyons where the people lived.

Finally, drawing from 'real life' came in the form of the Ostrich foot shell which is common on New Zealand beaches and learning the skills to do a 'scientific' example. Then the students were asked to use their imagination and produce a picture using the shell motif. The shell provided a variety of ideas.

We have had a busy year and these are some of the themes represented in this exhibition. A colourful, fun and imaginative time was had by all.

Mavis & Co Rototuna Exhibition Space

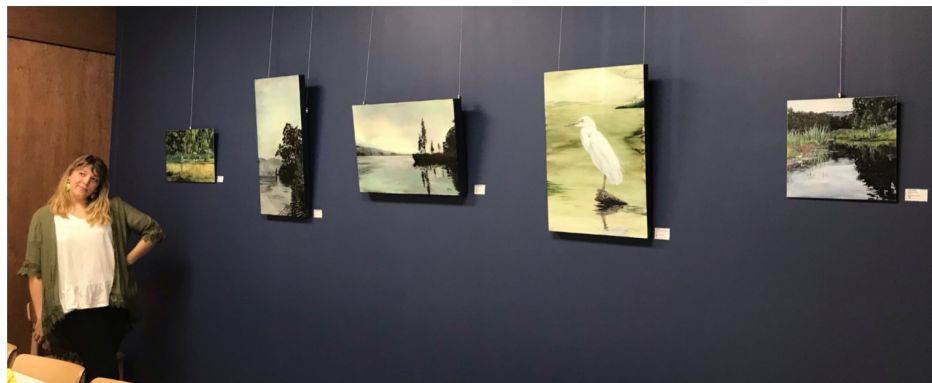
The Waikato Society of Arts are proud to be exhibiting members and students art at Mavis and Co, Rototuna. Through their sponsorship of this space, we are working together to foster creativity and growth of visual arts in the community by supporting local artists.

The 4th exhibition to be held at Mavis & Co Rototuna is **'Misty Moments'** which is a selection of 5 works by one of our past tutors **Monica Schinkel**. Be sure to pop in to view these stunning artworks.



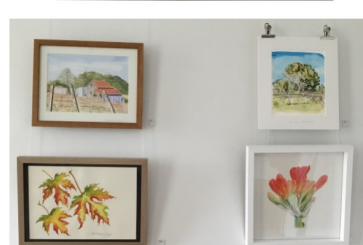
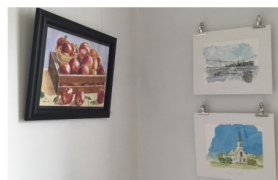
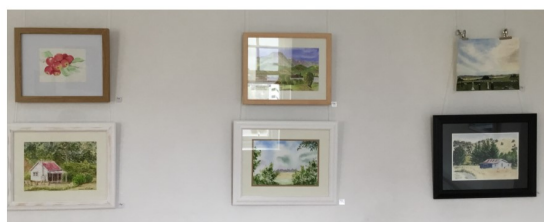
**28th September
to
13th October**

Rototuna Shopping Centre
(next to New World)
2/44 Horsham Downs Road



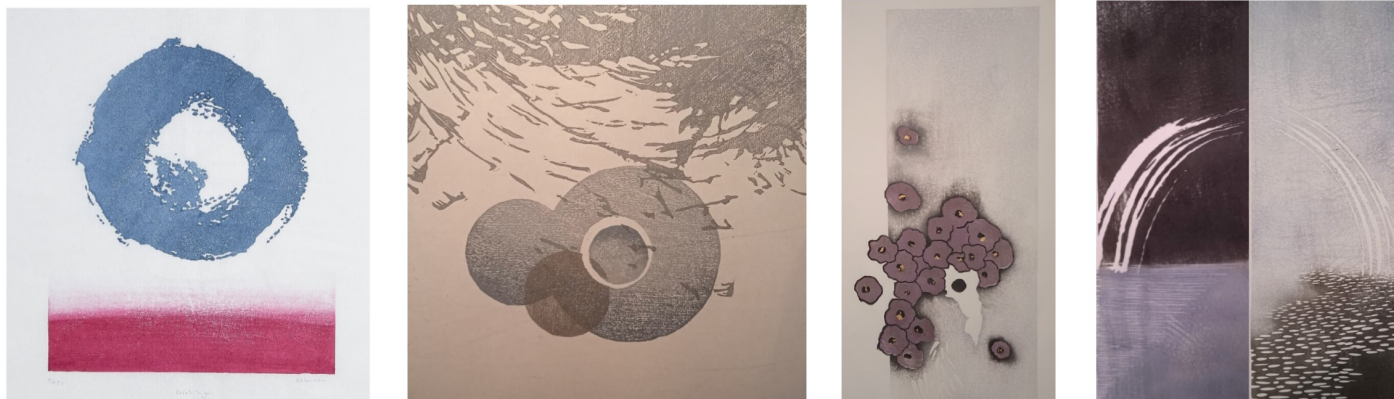
Next Level Gallery

Our current exhibition is a fantastic variety of watercolours. Students from Sue's Monday and Paulette's Wednesday watercolour classes have been busy mastering and refining their skills. Exhibition finishes 13th October.



Tutor Articles

Our super talented tutor Sybille Schlumbom has had a very productive time recently as you can see from her article below.



By Sybille

The recent months have been good for me in terms of creative achievements. I have taken part in an online artist residence with a group of international artists, and a final exhibition in Basel/ Switzerland <https://www.editionbasel.net/>

One of my works has been accepted to a juried exhibition in Japan for the International Mokuhanga Exhibition <http://2021.mokuhanga.org/>.

I also have a piece in the Awagami International Miniprint Exhibition. <http://miniprint.awagami.jp/index.html>, and my last years commissioned piece for Creative Waikato "Kotahitanga", has been chosen to be used in the kotahitanga primary school project taking place in schools all over the Waikato and currently exhibited at the Waikato University Gallery.

<https://kotahitangagallery.nz/artist/sybille-schlumbom>,
<https://cms.its.waikato.ac.nz/academy/gallery/kotahitanga-through-creativity/>

One of our fabulous children's tutors Dudri du Preez has been busy creating vibrant art with her toddler Klara always willing to add her 'touch'.

By Dudri

This is a reflection of us, but mostly me. I am not a trained or schooled artist, but within me lies a desire to create. I set out on a journey to release myself of all limiting beliefs, judgements and just create. This is my first solo exhibition and I wanted to create the feeling of me. These are expressions of recent times in my life. The things that will be exhibited in this room will be little clues as to where I come from, my interests and my thoughts.

Klara, my toddler, has been a big inspiration for me. I couldn't find the time to do art on my own, so I let her join me. What I learnt was to let go of control. Even while I wrote this she was scribbling on my notes. Klara adds a wonderful unpredictability to my artworks and life, something adults don't achieve as easily. I wish that this exhibition gives you a look into a starting process, an expression of self and perhaps it might inspire you to start something you've always wanted to. Express yourself.



Social Art Class

One of our fabulous tutors Rhiannon runs Monthly Social Art nights at the WSA. These are a fun relaxed evening that you can attend once or many times.

Held on the 1st Wednesday of each month from 6.30pm to 8pm. (Except October which was changed to the 13th)

All materials are provided including some treats. Rhiannon will guide you step by step to create a stunning piece of art to take home.

No experience needed.

Grab a friend and enrol now.

\$40

all materials inc

Monthly SOCIAL ART NIGHT

Next
session

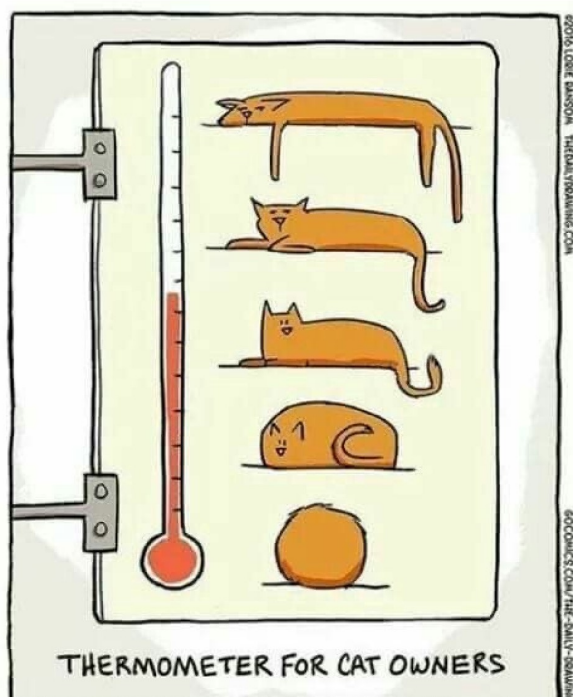
Wednesday
13th October
6.30pm



Enrol online

www.wsa.org.nz

Monthly Funnies



Workshops

Creative Christmas Workshop

HOSTED BY

Kate Symmans

We will cover botanical brush marks, simple floral illustrations and lettering to create personalised and festive stationary for this Christmas season, or any occasion! For first time watercolourists, our focus will be on understanding illustrative techniques in watercolour and for experienced painters, we can extend your skills in pen and brush lettering. Students will leave Creative Christmas workshop with one A3 Christmas wreath, x2 completed Christmas Cards and 6x gift tags plus a template to make more at home.

**Date: November 7, 2021
1-4pm**

- Beginner, intermediate, advanced
- Teens - adults
- \$45 per person



For enquiries and bookings, please go to our website at

wsa.org.nz or phone 07-8394481



Haydns Artyfacts

Three cheers for Women Painters

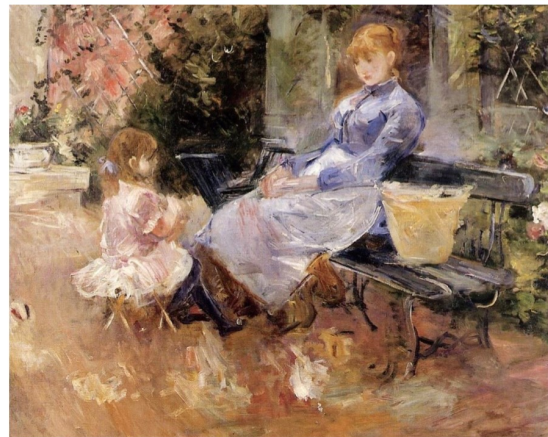
10 Berthe Morisot (1841 ~ 1895)

In recent years Berthe has been re-appraised as not just the “feminine impressionist with a light touch” but at the cutting edge who was bold enough to explore the colour of light and take it to another level. In this way she was a leader and should be recognized as such.

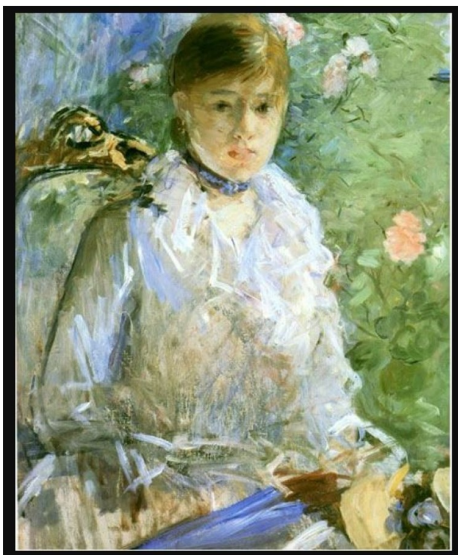
Manet, her friend and colleague has painted Berthe here in mourning clothes for her father who greatly encouraged her art. Berthe went on to marry Manet's brother – Eugene Manet, who was an artist in his own right. But when he saw Berthe's dazzling genius, he gave up his paint brushes and took care of their daughter Julie. Noble man.



Dans la salle à manger" by Berthe Morisot



You may not be surprised to find the Rococo artist Jean-Honore Fragonard was a descendent on her mother's side. We can trace the same lively brush-work continuing on with Berthe. Such a shame she only lived till the age of 51.



Waikato Society of Arts

Membership Benefits

ENTRY INTO ANNUAL EXHIBITIONS

ARTIST PAGE ON WSA WEBSITE

MONTHLY NEWSLETTER

FREE ARTIST TALKS

FREE ACCESS TO OUR EXTENSIVE ART LIBRARY

DISCOUNTED WORKSHOPS

DISCOUNTED ART CLASSES

DISCOUNTED STUDIO HIRE

DISCOUNTS AT LOCAL BUSINESSES

EXHIBITING IN OUR NEXT LEVEL GALLERY.....

Create or Renew
your membership
online www.wsa.org.nz
or email artschool@wsa.org.nz

wsa
art
WAIKATO SOCIETY OF ARTS

WSA History

We thought it would be nice to put little excerpts into our monthly newsletter about the history of the WSA. The excerpt below is from 'Moves Afoot - A supplementary history of the WSA 1983-2009' by Megan Lyon

The Waikato Society of Arts (WSA) has been a significant part of Hamilton's cultural, historical and community make-up since its inception on 14th August 1934. This was the result of a public meeting convened by two Hamilton artists, Ida Carey and Adeline Younghusband and Dr 'Tim' Rogers, who believed the 'arts should be the heart of life of every town, as a vehicle for the expression of humanity and morality'.



Part 10: Significant Celebrations 50th Golden Jubilee Activities

Date: 14 April 1984

Location: WSA Arts Centre, Victoria Street, Hamilton.

This opening coincided with the publication of Susan Skudder's *The First Fifty Years*. As noted in the president's report 'over 100 members attended a gala dinner which concluded a most memorable day.'

60th dinner and Exhibition Celebration

Date: Saturday 6th August 1994

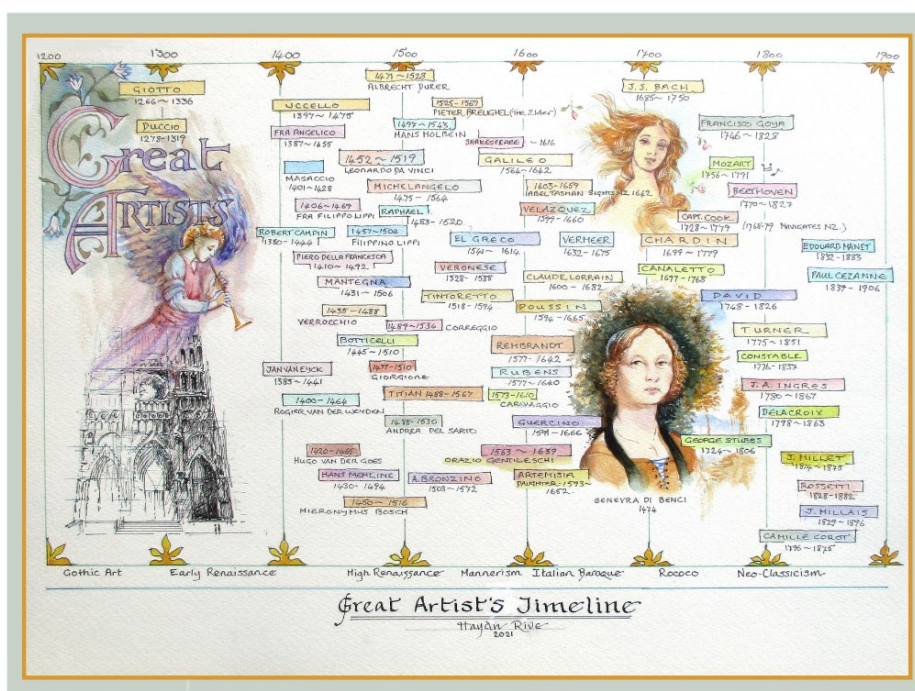
Location: Waikato Museum

An exhibition of work bought by WSA on behalf of the Hamilton City Council 1943-1970, during the years the WSA maintained the City Gallery on Grantham Street. Campbell Smith as guest curator to this exhibition wrote at the time;

'For the WSA collecting ended in 1970 but the other activities of the Society have been greatly renewed. Exhibitions are regularly presented at their Victoria Street Studio Gallery and the School of Art has a full-time programme of teaching art at various levels. It is great to know that the next sixty years is in good hands.'

(*You can read previous excerpts of WSA history on our website www.wsa.org.nz click on 'news' then any newsletter from August 2020)

Haydn Rive who teaches Watercolour, Acrylics & Pastels at the WSA, and is also our history enthusiast; has created this fabulous timeline of 'Great Artists'.



Congratulations

Sandz Gallery are tickled to announce that two of their artists have taken out prizes in the National IHC art awards announced yesterday. Deshan was awarded second place with his painting of a Freisian cow and Emma White is third with her Amy Winehouse portrait. Emma also came third in the People's Choice voting. Sandz Gallery are very proud of their achievements and this is their best result for many years. Congratulations from the WSA!



Their works will be auctioned by IHC on Trademe sometime in the next week or two.



Advertisements



Preview Exhibition

1 October 2021 –
25 October 2021

The Raglan Arts Weekend (RAW) opens this Friday 1 October with the opening of the Preview Exhibition revealing 84 artworks from participating RAW artists.

A showcase piece and a small 300x300 by each artist are up for grabs and interested folk need to be on the ball to secure popular artworks.

This year, the showcase artworks have been developed to the theme:
.....And Then We Paused/ Reflections of a Covid World

The Preview Exhibition is open every day from 10am-2pm until 25 October 2021 (including weekends).

RAW artists' studios will be open 10am until 5pm over Labour Weekend, 23-25 October.

RAW Art Guides are available at the Preview Exhibition.
Visit www.raglanartsweekend.nz for more information

FOR SALE

CALIFORNIAN REDWOOD EASIL.
This is a good medium size Studio Easil
in good condition.

\$50

If interested see Haydn Rive (Tutor)
or contact him at ~

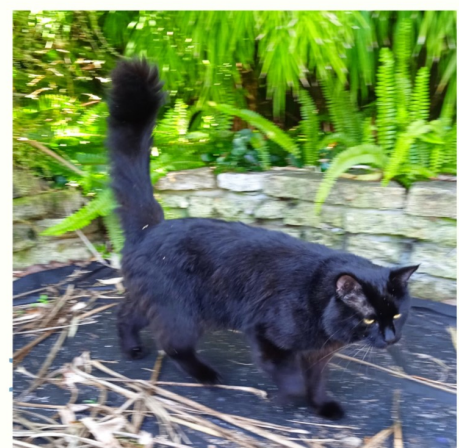
07 846 5220

rive44@slingshot.co.nz



PintoCal
EASELS FOR ARTISTS

HAVE YOU LOST YOUR CAT?



*Found on Brookfield Street,
Hamilton East*

CONTACT SYBILLE
021-1735391

29 - 31 October & 5 - 7 November 2021

Taranakiartstrail



✉ taranakiartstrail@gmail.com www.taranakiartstrail.co.nz

Calendar of Events and Exhibitions



Term 3 Ends	Saturday 2nd October
WSA AGM –120 Victoria Street	Monday 4th October - 6pm
Artspost Members Exhibition	5th August to Tuesday 11th October
October School Holiday Programme	4th October to 15th October
Term 4 Starts (8 weeks)	Saturday 16th October
Labour Day Public Holiday	Monday 25th October
WAIPRINT entries close	Wednesday 1st December, 2021
Term 4 Ends	Friday 17th December
WAIPRINT opens	Thursday 13th January, 2022
NZPPA Entries Close	Monday 7th February, 2022
National Youth Art Award (NYAA)	Thursday 10th February, 2022
New Zealand Paint & Printmaking Award (NZPPA)	Opens Friday 8th April, 2022

NEXT LEVEL GALLERY - CALENDAR

Watercolour Classes Exhibition	30th September to 13th October
X-Ray Exhibition	14th October to 27th October
Dudri du Preez	28th October to 10th November

WSA EXHIBITION SPACE MAVIS & CO CAFÉ, BISTRO & BAR — ROTOTUNA

Monica Schinkel	15th September to 26th October
Gemma Reid	26th October to 7th December
Sue Burnett	7th December to 18th January
Caroline Peacocke	18th January to 22nd February

*Please note the changes to some dates above due to Covid Alert Level interruptions. These will differ from previous newsletter calendars. More information is on the front page of this newsletter and on our website www.wsa.org.nz or email Julie wsa@wsa.org.nz

Help us thrive!

Join **CommUnity** and choose us as your **CommUnity Group** to support.

CommUnity
turning commerce
into community
www.comm-unity.kiwi

We would like to thank our sponsors for their support of the WSA.



Spring Colour Sale

SALE ENDS 02.11.2021

385 Anglesea st. Hamilton
WWW.GORDONHARRIS.CO.NZ



Gordon Harris
THE ART & GRAPHIC STORE

FROM THE EDITOR – PAULETTE BRUNS

If you have articles you think suitable for our newsletter, please let me know.

A very special thanks to **SHARP**, who continue to help us substantially with printing.

NEWSLETTER ADVERTISING RATES

A GREAT WAY TO SUPPORT THE WSA

Half Page - \$120 colour

Quarter Page - \$70 colour

Opportunities, exhibitions & Member's short ads – up to five lines, approved by WSA are free.

SHARP

Be Original.

WSA OFFICE AND ART SCHOOL

120 Victoria Street (above ArtsPost Gallery)

PO Box 1018, Hamilton 3240

07 839 4481

Office Hours:

Mon- Fri , 8.30am - 4pm

Sat 9.30am-2.30pm

artschool@wsa.org.nz for art school

wsa@wsa.org.nz for all WSA enquiries

Website: www.wsa.org.nz

Paulette works in the office 20 hours per week, if you need a faster reply please include Julies email wsa@wsa.org.nz

WSA EXECUTIVE COMMITTEE

Patron: Joan Fear

Committee: Michelle O'Brien
Nicolas Wells
Melany Sutherland
Gemma Reid
Gaye Jurisich
Karen Taylor
Treasurer & Chair: Rachael Hayton
Hon. Solicitor: Charlotte Isaac
Hon. Secretary: Julie Johnstone