



Art Connections

WAIKATO SOCIETY OF ARTS

PO Box 1018 Hamilton 3240 www.wsa.org.nz

You are invited!

NZPPA Opening & Prize giving Evening & Exhibition is finally here! Please join us on Friday 2nd October at 5.30pm in The Atrium, Wintec City Campus.

NZPPA Opening & Prize giving

Friday 2nd October at 5.30pm

PCANZ Talk by Nicol Sanders-O'Shea

Saturday 3rd October at 10.00am

NZPPA Exhibition

**3rd October to 5th October The Atrium,
Tristram Street, Wintec City Campus.**



From the Office

Congratulations to all our talented young artists who were a part of this year's National Youth Art Awards. We had our prize giving on Thursday night and what an amazing turn out of young people with their friends and families. Thank you to Philip Hassall, from Midland MRI (our main sponsors), and to Sam Cunnane from Wintec Media Arts, Faith Thomas from the Print Council Aotearoa NZ for attending the awards, speaking and presenting their prizes. Our Judges, Gaye Jurisich and Stuart Bridson did a fantastic job of sifting through all the high quality entries and choosing the finalists. Thank you for giving up your personal time to do this task. Your feedback to the artists who attended the evening was invaluable. Alongside the Prize giving we had the official opening of Waiprint and special recognition to our notable printmaker, Ruth Davey. Their exhibition looks beautiful and everyone is enjoying the wide range of Waikato printmaking on display. Upstairs, we had the Next Level Gallery open for people to enjoy Ruth Davey's Print Parade exhibition and thank you to Marion for looking after this and to Paulette for all her help on the evening. Finally thank you to all our amazing volunteers who helped unpack the art to hang, helped at the Opening with food and serving drinks. Our talented photographer, Alcuin and Melany and Gemma from the Executive who handled the evening's proceedings. What a great team effort!

We hope you will all be able to join us on Friday, October 2nd for the Opening and Awards evening for the NZ Painting and Printmaking finalists in the Atrium at Wintec. This opens at 5.30pm. This is our final major event of the year and we are very grateful to be able to hold this exhibition. We truly appreciate the support of our sponsors, even with the uncertainty of current events.

Our AGM will be held on October 14th at 6pm in Studio 2, please come along and support the Executive who have managed the past year for the WSA members. Although there have been a lot of uncertainty through the year, the WSA has had a positive vibe around our exhibitions and classes and this is a credit to all involved, including our dedicated tutors.

Take care and be kind to each other, a smile can go a long way.

Julie

On behalf of the WSA Executive

October 2020

NYAA EXHIBITION

Friday 11th September

To

Monday 12th October

ARTSPOST

GALLERIES & SHOP

120 Victoria Street

HAMILTON



Our prize giving for the National Youth Art Awards was held on Thursday September 24th, what a great turn out. Thank you to all of you who could attend.

Congratulations to the prize winners:

Young Emerging Artist 13-14 years – Danae Nasmith – Life In Miniature

PCANZ Print Prize – Alyssa Sayers – The Mysterious Underneath

Merit 15-19 years – Nyle Turuwhenua – Wairua Kakahu

Highly Commended 15-19 years – Ben Westwood – Wreckage

***Main Prize 15-19 years – Eli Molloy-Wolt – Utopian World
(Sponsored by Midland MRI)***

Merit 20-25 years – Georgia Arnold – In The Park, 2020

Highly Commended 20-25 years – Hannah Ireland – Erasure

***Main Prize 20-25 years – Gavin Chai – Interior No. 9
(Sponsored by Midland MRI)***

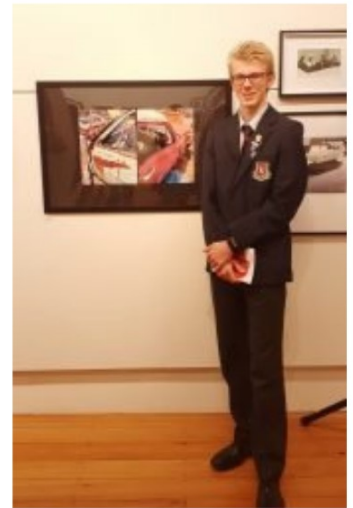




Young Emerging Artist 13-14 years
Danae Nasmith -Life In Miniature



PCANZ Print Prize
Alyssa Sayers
The Mysterious Underneath



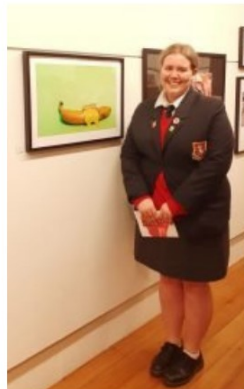
Highly Commended 15-19 years
Ben Westwood - Wreckage



Ella Adams
Man Alone



Alysse Klages-Bowskill
Nana in Fowey



Frankie Vegas
Banana-ception



Odin Roberts - Junktopus



Molly Simes - Today's Chores



Nicola Walsh
Neopolitana



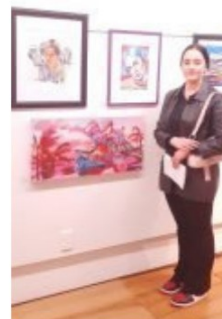
Johanna Vreede
Nau Mai Ra
Welcome Home



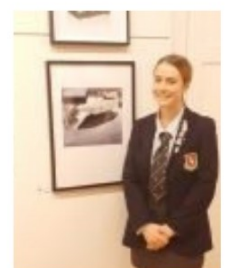
Poppy Campbell
Symbolic



Madeleine Cunliffe
Spaced Out



Amy Barnes
La Plage



Amelia Newhouse
Voyage



Sam Cunnane
Wintec



Gemma Reid



Faith Thomas, Melany Sutherland ,
Philip Hassall -Midland MRI



Judges - Stuart Bridson
& Gaye Jurisich

October 2020

WAIPRINT 2020

On now at ARTSPOST GALLERY
until October 12th.

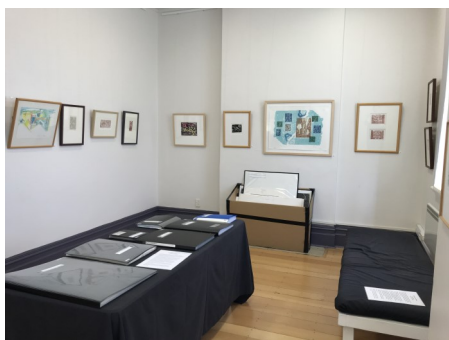
10am -5pm 7 days

Our guest artist, Ruth Davey, will be showing nine pieces spanning three decades and more of her work will be available upstairs in the Next Level Gallery. The proceeds from all sales of her prints go to the new Ruth Davey Merit in Printmaking award at the New Zealand Painting and Printmaking Awards in October.



Image: Ruth Davey, Icons 1/1 (detail) woodcut

WAIPRINT and the NLG exhibition opens on
Friday 11th September and run until 12th October.



wsa
art
WAIKATO SOCIETY OF ARTS

EXHIBITION
ON NOW

RUTH DAVEY:
PRINT PARADE



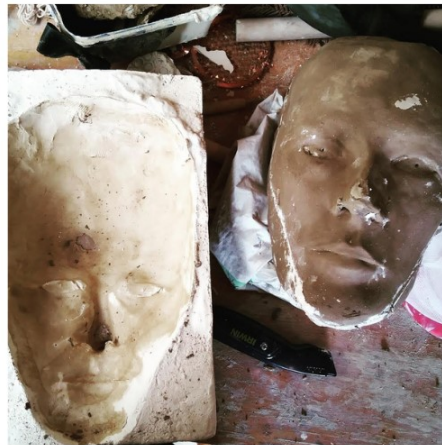
NEXT LEVEL GALLERY

11th Sept - 12th Oct

Tutor News

Susannah Salter - WSA Oil Painting & Life Painting Tutor

Local artist Susannah Salter received a boost to her career this month when her design proposal was accepted and she was invited to exhibit her work at the well known Kaipara Coast Sculpture Gardens in November. The work will be on show for a year. 'Woman of the World' is a two metre high sculpture of the female form, created in fired ceramic, found objects, wire and steel. She stands, both Mother Earth and Papatūānuku, age-old and all powerful, surveying this world, with one foot in another. The concept was born out of the collective Covid 19 experience and witnessing the world flourish without pollution and also a desire to see strong female statues reclaim the landscape.



Susannah is a full-time painter and potter, who teaches painting and pottery in Hamilton and surrounds. She enjoys sculpting and the firing process, which brings extra life and texture to her work. She is a graduate of Wimbledon School of Art in London, where she did a degree in Costume Design. This is her first large scale sculpture. Susannah regularly takes part in group exhibitions in Hamilton and her next painting exhibition this year will be with Gaye Jurisich at Bustle in Hamilton from 28 November 2020 in their exhibition, 2VIEWS. Susannah's website is www.susannahsalter.com. Work is also regularly updated at @susannahsalter on Instagram, and @susannahsalterartist on Facebook.

Kaipara COAST
sculpture gardens

<https://www.kaiparacoast.co.nz/sculpturegardens.php>

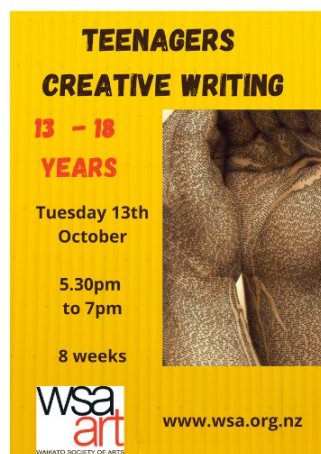
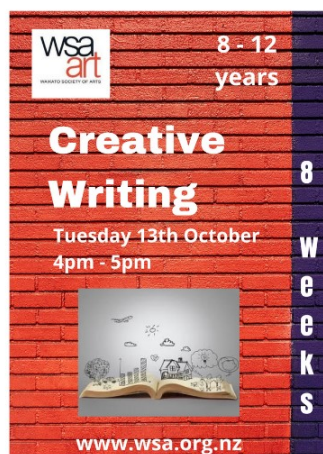
Don't miss viewing 'The Jurisich Experience' on now at Waikato Museum. In-situ installations by Gaye Jurisich. On until 1st November. Well worth a visit with children or adults.

Term 4 Classes - Starting 12th October - 8 Weeks

Don't miss out on a spot in some of the classes below that still have spaces available. Class numbers are kept small at 8 students so that you gain maximum benefit. Our tutors are highly skilled in their specialities, with a wealth of knowledge to pass on to you. Whether you are a complete beginner or wanting to advance your current skills, we have 46 classes on offer in term 4. Not only do we have the staples like Acrylic Paintin, Oil Painting, Watercolour, Drawing, Printmaking, Life drawing; we also have the more unique like Creative Writing, Sculpting Creatures, Pastel Painting, Acrylic Pouring & Life Painting. We also have a selection of untutored classes for those who prefer to work independa alongside other likeminded people. For more inform or to enrol go to www.wsa.org.nz or contact artschool@wsa.org.nz



This acrylic painting course is designed for beginners with an interest to learn how to paint in acrylics. Students will learn how to get started painting in acrylics. The goal for this class is to complete a landscape painting at the end of the course. Students will learn the basic equipment to use for acrylic painting; the basic primary colour palette to use for landscape painting and the differences between acrylic and oil paints.



Anya tutors Creative Writing 8-12 years, Teenage Creative Writing & Sculpting Creatures



Anya is a writer, filmmaker and multimedia visual artist. She has a First Class Honours in Fine Arts and a Master of Creative Writing majoring in Screenwriting. In her own work Anya likes to find human truth within the unusual and absurd.

Anya remembers the struggle of being a creative child/teen when the arts were oftentimes undervalued compared to other subjects, and the negative impact this had on her self esteem. Everyone learns and expresses themselves differently. Anya is passionate about creating a space where the individual brilliance of a child/teen can be fostered, so that they may excel in their creative endeavours and grow a positive sense of self.

Term 4 Classes - Starting 12th October - 8 Weeks

**Wednesday's
Teenage
Art
Skills**
With Ellie Lee-Duncan

**13 - 18
year olds**

4pm to 5.30pm

**Starting 14th October
8 weeks**

**enrol online now
www.wsa.org.nz**

Teenage Art Skills for 13-18 years. Enrol your teen now to be tutored by Ellie who will guide and inspire them on their journey of art. Be it to refine and explore a particular area of art, or to experiment in many art mediums.

Ellie is highly skilled and experienced in writing, documenting and analysing art works to a rigorously detailed and perfectionist degree. She completed an Honours degree in Art History through Victoria University and a BA in English Literature. Previous work experience at both the Adam Art Gallery under Sophie Thorn and Te Papa Tongarewa Museum under David Maskill, assisting with their Collections Department. Excelling in writing documentation reports, handling, transporting and storing the works in congruence with Museum policy, and in-depth study of individual works and artists.

**Enrol online now
for Term 4
www.wsa.org.nz**

Pieter Swanepoel has been involved in the visual arts all of his life.

He worked in a variety of fields, including art criticism, photography, illustration, design, education and as an independent artist, having exhibitions of his own work.

As an educator he taught at a number of secondary and tertiary institutions in South Africa before immigrating to New Zealand. He settled in Hamilton some five years ago and has tutored various classes here since.



**Pastel
Painting**
The Goddess
Portrayed

Like the "Selfie" portrait classes by Pieter Swanepoel these classes will be in a "project" format. This simply means that there is a lot of emphasis on the process, or then the development towards what will be a final artwork, which in this case will be in the pastel medium. The Goddess Portrayed will be an exploration of looking at what it is that makes a goddess, historically as well as in our contemporary, daily lives. The Goddess may be someone important or famous within our society or perhaps even from a world outside our own. But then again, the goddess may be an inner self. This is why it is important that the actual "final" artwork will be the result of an extensive process aimed at portraying not only the physical, but indeed also the spiritual aspects of such a Goddess.

**Tuesday 13th
October
1pm - 2.30pm
8 weeks
www.wsa.org.nz**

Oil or Acrylic
PORTRAIT OF THE ARTIST AS A SELFIE

**12th October
1pm - 2.30pm
8 weeks**

These painting classes will take the form of a "project". As such it is as much about the process as it is about the final painting, which will be in a medium of choice. The selfie will be explored through a series of selfie-portraits taken in whatever way possible. Such initial images will then be processed to become part of an artwork which will be the result of an entire process, rather than a simple copy of a realistic photographic self-portrait. Here are two examples prepared to show which way such a Portrait of the Artist as a Selfie might turn out.

www.wsa.org.nz

MONDAY EVENINGS

**Experimental
Printmaking**

Come and be tutored by the extremely skilled and talented printmaker Caroline Peacocke

**OCTOBER 12TH
TO
DECEMBER 7TH**

www.wsa.org.nz

wsa art

Thursday 15th October
8 weeks
4pm - 5.30pm

Enrol Now!!

**Figure
Drawing**

8 years +

Figure Drawing for 8 years up
Learn the steps towards sketching the human figure using just your pencil. While growing your skill sets along the way to drawing your very own realistic portraits.

www.wsa.org.nz

OCTOBER 12TH - 8 WEEKS

COME AND LEARN THIS WONDERFUL MEDIUM WITH SUSANNAH SALTER

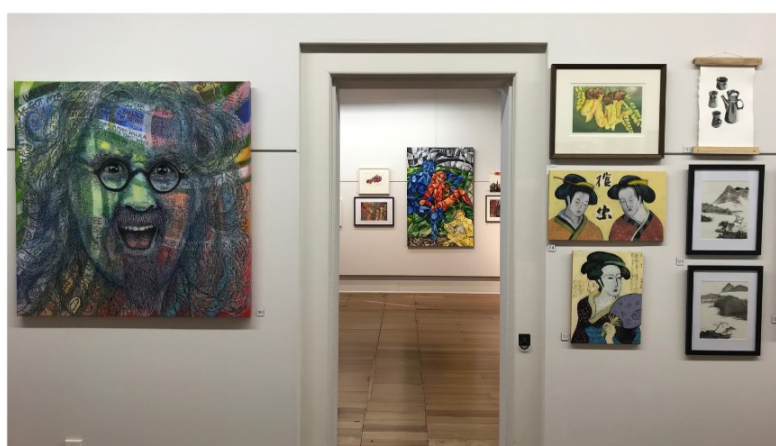
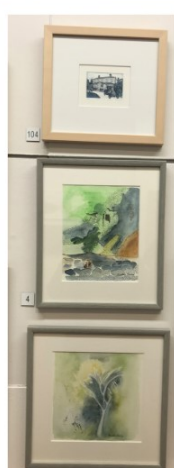
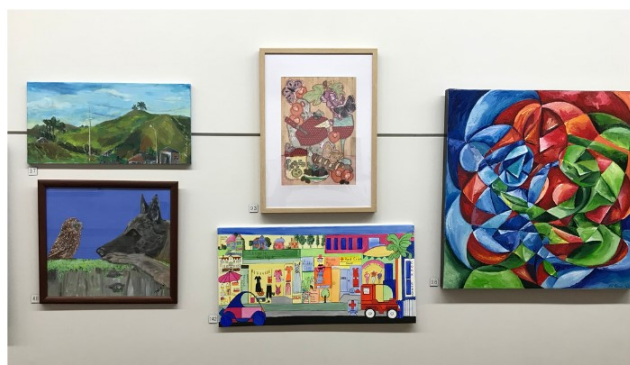
**Oil Painting
Evening**

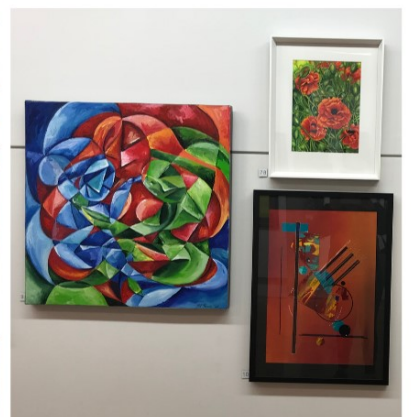
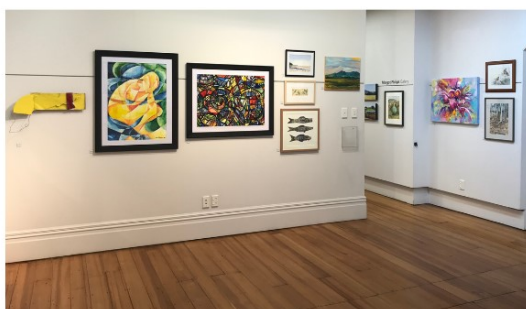
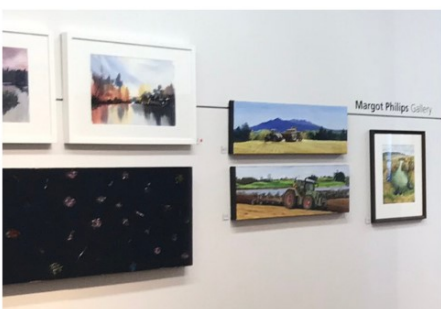
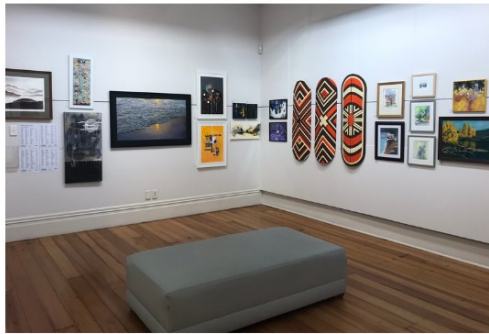
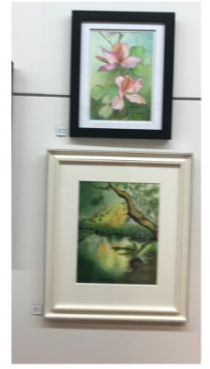
Mondays
6.30 - 8.30pm
www.wsa.org.nz

wsa art
WAIKATO SOCIETY OF ARTS

Members Exhibition -Artspost 7th Aug -7th Sept

As most of you will know we recently held our annual Members Exhibition downstairs at Artspost. We received a record number of artworks from our members which resulted in a fantastic variety of art to display. It is always wonderful to see what our members have been busy creating either at home or in classes they attend here at the WSA. Our Peoples Choice Award winner was Briar Tucker who who created the stunning artwork to the right using pastels. It was so realistic I know several people were amazed it wasn't a photograph. For those that didn't get a chance to view the exhibition here are photos of the 3 galleries at Artspost the art was displayed in.





Calendar of Events and Exhibitions

NYAA & Waiprint Exhibition	11th September—12th October
School Holiday Programme	28th September—9th October
NZPPA Opening & Prize giving	Friday 2nd October @5.30pm
Term 4 Starts	Monday 12th October (8 weeks)
PCANZ Talk –Nicol Sanders-O'Shea	Saturday 3rd October @10am
NZPPA Exhibition	3rd October—5th October

NEXT LEVEL GALLERY - CALENDAR

NLG Ruth Davey Print Exhibition	10th September—12th October
NLG Peter Garland Exhibition	13th October—3rd November
NLG Felipe Queriquelli Exhibition	4th November—16th November
NLG Ellie's 13-18 year olds class Exhibit	17th November-25th November
NLG Carril & Dudri's Exhibition	26th November—2nd December
NLG Xmas Cash & Carry Exhibition	3rd December-16th December

SUDAN II

Peter J.W. Garland

The centre of thought is spatial. The geography of thought is structural.

In this show I am looking for the primacy of what we look at, in the sense where our emotions and thoughts interact with what we see. If art has a primordial sense, what does it do and how do we respond to it?

If the mind has a place where art is cherished and understood, this exhibition celebrates that. The gallery is a microcosm to life.

Also, it is trying to examine where the art piece is at the moment, within modern society and the artistic tradition. Where life has so many demands on us, here I am putting together a perspective of love and adventure and how we can see and interpret life. After all it is how we see life that is its reality.

Life is an organic collection of parts, a random collection of elements that are put together and create life. These paintings are a series of parts that put together and create a three week exhibition. This is the simple context of Sudan II; I hope people enjoy the work.

Please express your interest if you want to exhibit at The NEXT LEVEL GALLERY in 2021.

Email the office at wsa@wsa.org.nz

We would like to thank our sponsors for their support of the WSA.



Wintec
WAIKATO INSTITUTE OF TECHNOLOGY
Te Kuratini o Waikato



MidlandMRI
MR IMAGING SPECIALISTS

THE PHILIP VELA FAMILY TRUST

KOROK 
FIRE AND ACOUSTIC WALL SYSTEMS

Hamilton City

 **creative**
COMMUNITIES *nz*



THE LION
FOUNDATION

grassroots
TRUST
www.grassrootstrust.co.nz



CREATIVE WAIKATO | AUHA
TAINUI

40 YEARS OF THE
 **PERRY**
BRIAN PERRY CHARITABLE TRUST

area

Gordon Harris
THE ART & GRAPHIC STORE

pc
PRINT COUNCIL
AOTEAROA NEW ZEALAND



TRUST WAIKATO
TE PUNA O WAIKATO

Riskadvice
business & personal insurance



chowhill

FusionPrint
a division of Soar Printing Company Ltd.

 **Hamilton City Council**
Te kaunihera o Kirikiriroa

carltonpartyhire
where all successful functions begin
hamilton

the **FRAMING
WORKSHOP**

 **First Sovereign**
TRUST

Blue Sky
COMMUNITY TRUST

Poppies
'My kind of bookshop'



Sir John Logan Campbell Residuary Estate



warehouse
stationery

WEL
ENERGY
TRUST

AUTEUR HOUSE
EST 2000

New Zealand Post 



LIDO CINEMA
HAMILTON

spring colour sale

Online
& Instore

385 ANGLESEA STREET
HAMILTON



www.gordonharris.co.nz

UP TO 25% OFF ARTISTS' QUALITY PAINTS

SALE ENDS 3/11/2020

FROM THE EDITOR –PAULETTE BRUNS

This WSA Art Connections Newsletter could not be created without contributions from members.

If you have articles you think suitable for our newsletter, please let me know.

A very special thanks to **SHARP**, who continue to help us substantially with printing, and Warehouse Stationery, corner Ward and Anglesea Street, for copy paper.

NEWSLETTER ADVERTISING RATES

A GREAT WAY TO SUPPORT THE WSA

Inserts \$80 per page (printed and delivered to WSA)

Full Page \$240 (available only if space available)

Half Page \$120 colour

Quarter Page \$70 colour

Opportunities and exhibitions

and Member's short ads – up to five lines are free.



warehouse
stationery

WSA EXECUTIVE COMMITTEE

Patron: Joan Fear

President:

Committee:

Michelle O'Brien

Mark Dyer

Nicholas Wells

Melany Sutherland

Gemma Reid

Treasurer:

Rachael Hayton

Hon. Solicitor:

Charlotte Isaac

Hon. Secretary:

Julie Johnstone

SHARP

Be Original.

WSA OFFICE AND ART SCHOOL

120 Victoria Street, above ArtsPost Gallery

PO Box 1018, Hamilton 3240, Phone 07 839 4481

Mon- Fri , 8.30am - 4pm

Sat 9.30am-3pm

artschool@wsa.org.nz for art school

wsa@wsa.org.nz for all WSA enquiries

Website: www.wsa.org.nz