



WAIKATO SOCIETY OF ARTS

Art Connections

PO Box 1018 Hamilton 3240 www.wsa.org.nz

Welcome to the November newsletter

In this month's newsletter you will read that exhibitions have been busy at blue with the finishing up of WAIPRINT 2023. There was a fantastic amount of support for this exhibition, through sales and attendance. A big thank you to all the people who volunteered to sit at the gallery while this was on, this is really appreciated. We have several new exhibitions happening since the last newsletter so please make sure to mark any openings and when these are finishing, so you don't miss seeing the variety of skill and mediums artists have taken to prepare their works for all of us to enjoy.

On a more serious note, we held our Annual General Meeting for 2023 on October 10th and although it is always a struggle to get members to attend, our loyal supporters came through to make a quorum. The main message from our Chair, Rachael Hayton, was that we need more support. The WSA is at a point where we need people to consider what they can do to help us recover from the past few years with Covid-19 and the large effect this had on our enrolments. In some terms we were down to a third of our normal numbers, with no children's classes or school holiday programmes running. We paid our tutors through this whole period by topping up the Wage subsidy so they were not impacted financially for their loyalty to their students and the WSA. We have not recovered to our pre-Covid numbers and along the way are feeling the impact of the cost of living crisis also. These two large factors have left us asking our membership and supporters to consider doing anything small or large that will help secure the future financial viability of the Society. This may be through amazing fundraising ideas that you want to get involved in to make happen, donations of art, where the full sale value will go to the WSA, future bequests, annual donations, getting the word out to your contacts for sponsorship of our art awards, attending the exhibitions to buy art and supporting our art classes and workshops. This not only benefits us but just as importantly it benefits the artists and our hard working tutors. We feel the WSA plays an important part in the fabric and history of Hamilton, the Waikato and further afield, through our long running operations and we want to secure this for a bright future moving forward. We have future developments that will change things a lot for the Society and look forward to sharing these with you. In the meantime please take note of what is being asked and see if you would like to contribute and play an important part of the next 90 years at the WSA.

We are excited to announce the two judges for the 2024 NZ Painting and Printmaking Awards. Thank you to Kura Te Waru-Rewihi and Marian Maguire for agreeing to take on this important and large role. Kura was inducted into the CoCA Hall of Fame in 2016 and the following year she was appointed as Associate Professor of Māori Visual Arts, Toioho ki Āpiti, School of Art, College of Creative Arts Massey University. In 2019 she was awarded as the first Wahine Maori the Te Waka Toi the Te Papa o Tongarewa Rongomaraeroa Award. Kura has exhibited in numerous group and solo exhibitions. Marian Maguire is best known for her lithographs and etchings which investigate New Zealand colonial history and Greek mythology. She graduated from the Ilam School of Art, University of Canterbury in 1984 and in 1986 studied at the Tamarind Institute of Lithography, Albuquerque, USA. She has exhibited regularly throughout Aotearoa since 1984 and her work has received international recognition. For more on our exceptional judges please go to our website to read about their fascinating careers and artistic practices. Entries close 18 February, 2024



Kura Te Waru-Rewihi



Marian Maguire

We look forward to seeing you at WSA events and enjoying your company at our classes this term.

Julie Johnstone

blue Gallery Exhibitions

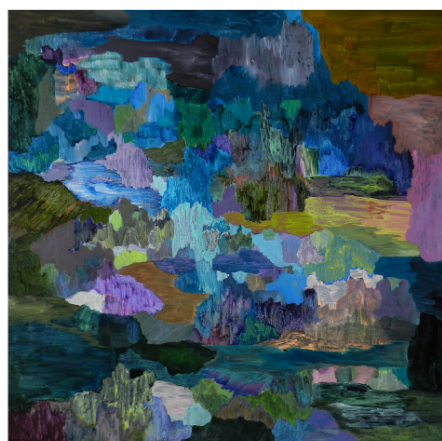
3 Anzac Parade, Hamilton

**From Whaingaroa Raglan and
Piha to New Works****20 Oct-4 Nov****Opening Event 19 Oct
5.30-7pm****Libby Vandy-Mines**

Artist statement : I have always had an interest in and loved the coastal landforms, the rocks, the sea and the skies of Whaingaroa, Raglan. I have memories of being on Ngarunui (Ocean) Beach with my father and seeing the muted colours of the dawn and later in the midday light, the intensity of the black volcanic rocks of Manu Bay. Years later staying and visiting Piha and seeing the similar features of Whaingaroa and Piha. I have painted in a more representational style but I have pushed towards a more conceptual realisation style of the ocean and waves in some paintings.

My work from early years has been informed by McCahon, Fomison and Hotere. I have always had a deep appreciation and empathy for the essentialism of their landforms and figures. However I have struggled to reduce detail in my own work at times. I have also had decades of viewing and thinking about the plight of refugees. My first painting of refugees was as a teenager preparing for my Fine Arts prelim assessment. Recently, I have been seeing the global plight of refugees in the media and watching Chrystal Pile's ballet, "Flight Pattern" on refugees. Those experiences lead into my more recent image of a refugee child in my painting, "She Looked Back". My recent paintings include landscapes of the Waikato informed by history studies at Waikato University and focusing on Colonial landscapes and themes of loss and grief and dislocation. In this, there are parallels with the plight of refugees. Some paintings fall outside the major interests or themes of my previous works. I have touched on some subjects for portraits or still life studies which have served to invigorate or refocus my practice.



VISTA**Antony Densham****Opening Event
18 Nov - 3-5pm****18 Nov-2 Dec**

Artist Statement: Vista / A mental view of a succession of remembered or anticipated events. -Oxford Languages online. This definition is a very open ended and malleable interpretation of how the landscape is viewed and sums up how artists engage and often wrestle with remembered or anticipated events within their own practices. Artists like explorers yearn to discover new land but must always keep on hand a map of past discoveries. This retrieving of past paintings as a starting point combined with the question 'What wants to happen?' ensures there is grounding of energy as the artist locates new territories. Antony locates these territories between abstraction and figuration and says, 'For me the goal with painting is to suspend the left-brain hemispheres representational grasping long enough for the right brain to connect other dots. Rather than be settled into a routine of interpretation I want the viewers attention to remain open and for the imagination to wander.'

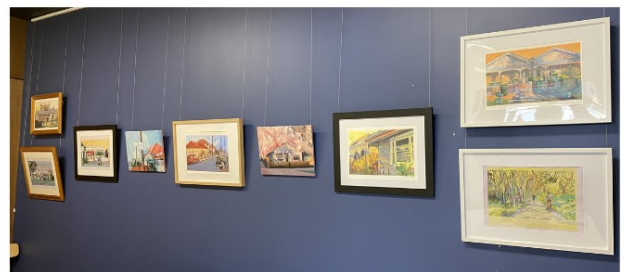
Antony is from Tamaki Makaurau, Auckland he has a Postgraduate Diploma in Fine Art from Elam (University of Auckland)

W: antonydensham.com **Insta:** @antony_densham **E:** antonydensham@gmail.com

Mavis & Co Exhibition 'Neighbourhood' by Hannah Morgan Savage

3rd October - 28th November

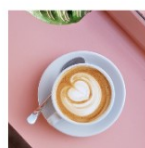
Hannah Morgan Savage is 24 years old and born and raised in Kirikiriroa. Her acrylic landscape paintings explore themes around nature and urbanism, drawing from her university studies in geography and passion for climate change discussions. In 'Neighbourhood', Hannah reimagines suburban scenes from imagery taken on walks while living in inner Melbourne.



MAVIS AND CO

café • bar • bistro

Rototuna Shopping Centre
2/44 Horsham Downs Road



Mavis & Co Exhibition

28th November -30th January

WSA Members & watercolour artists Clare Cramond & Anne Mickell will be exhibiting a selection of works over the Summer period. More information will be in the December Newsletter.

blue Gallery Exhibitions

3 Anzac Parade, Hamilton

Outside at Dusk

Helena Skerlj-Rovers

Opening
Saturday 9th
December
1-3pm

9th -21st
December

blue

Wed-Sat
11.30am - 3pm



WAIPRINT Letterpress Workshop

Saturday, 7 October, WSA Print Room

Five keen printmakers attended the second WAIPRINT workshop, led by Graham Judd of Inkiana Press in Auckland. Vicki Jones, Amanda Talsma-Williams, Geoff McGown, Sue Preston and Steph McLellan were enthralled by the 1833 Albion Press with its specially designed trolley to get it into the building from its Tardis-like trailer. Over the course of the day Graham shared his years of experience in a patient and informative way.

Setting the type (lovely wooden letters, or much smaller lead type) was like doing a jigsaw puzzle – using ‘furniture’ and magnets to fill all the gaps around the letters to keep them firmly in place in the galleys. We then took photos with our phones (a bit of modern technology to use with the old-school technology) and flipped the image to see if we had them round the right way, as we had to set the type back to front and upside down. (Can you spot the error in the ‘Step by Step’ image?)

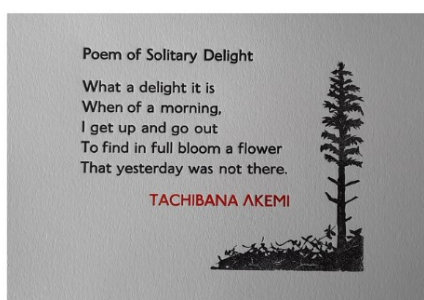
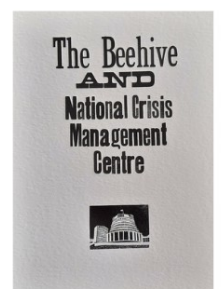
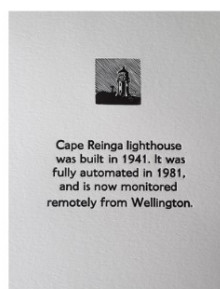
‘Pulling the print’ did indeed require a firm pull on the well-worn wooden handle – how many others had gone before us and used this lovely machine, and what had they printed?

Although Graham’s cases of type included some ready-made images to drop in, Geoff took the opportunity to use his own wood engravings, a printmaking technique originally devised for illustrating printed texts.

Many thanks to Graham for bringing his press and educating us on this process, and to Geoff and Julie for organising the workshop.

Sue Preston & Janice Meadows

**STEP BY STEP
SHE
TRAVELLED
FAR**



Photos by Geoff, Amanda, Sue, Steph and Janice.



Waiprint Exhibition - Print Your Own Card Saturdays



PYO Card Saturdays a hit with all ages

A new feature for WAIPRINT this year was our Print Your Own Card sessions. We supplied pre-carved woodcut and lino blocks, blank card stock, water-based inks and two relief presses. At \$3-4 each or three for \$10, most opted for at least three cards and in some cases a dozen. It was great to see the littlies catching the printmaking bug.



The People Have Spoken

Congratulations to Sue Preston, winner of the People's Choice award for her charming artist's book 'Kawakawa'. It was snapped up on opening night and was a talking point throughout the exhibition. Sue's prize is a one-year WSA membership.

Win this Ruth Davey original etching

Ruth established printmaking at the WSA Art School in the 1970s and continued working in the Print Room well into her nineties. Since her retirement from printmaking and move to Hilda Ross, her collection of prints has come under the stewardship of the WSA. All proceeds from the sale of her prints – and of this raffle – go toward the Ruth Davey Merit in Printmaking prize to be awarded at NZPPA 2024.

You can see this Davey print (and others) in the WSA office and buy tickets for only \$2 each or three for \$5. Winner will be drawn in April 2024.



Correction: Apologies to Trish Best and Carol Fagan, who were given incorrect surnames in last month's article on the Feathered Frieze WAIPRINT workshop.

Art School



Kids Xmas Craft Holiday Programme

5-12 years

Enrol online now to secure a place in this fun morning programme tutored by talented WSA tutor Josie Ward. Children can attend one morning or all three. 8 students maximum per morning gives your child a quality experience.

Wednesday 20th December - 9am - 12pm

Christmas wood Painting and 3D Christmas Caricature Craft

In the morning students will learn how to paint fun Christmas images onto wood slices to turn into tree ornaments. After morning tea students will create 3D Christmas caricatures out of a mix of materials.



Thursday 21st December - 9am - 12pm

Create a Christmas village and holiday themed watercolours

In the morning students will create a Christmas village. After morning tea students will learn how to paint Christmas watercolours and turn their watercolours into cards, ornaments and gift tags



Friday 22nd December - 9am - 12pm

Miniature Christmas trees and Christmas Crafts

In the morning students will learn how to paint Christmas folk patterned Christmas trees. The Christmas tree will assemble into a 3D stand alone Christmas tree. After morning tea it is time for fun free choice Christmas crafts.



**\$35 per child
per morning**

**Enrol at
wsa.org.nz**

Shop now. Pay later.
Always interest-free. **afterpay**

Art School

12 years+ Sculpture Workshop

**Saturday 16th December &
Sunday 17th December**

12 year olds upwards

10am-4pm



Want to gain a valuable new skill? Come along and learn how to sculpt with polymer clay!

Whether you want to sculpt a character who has human features, is a fire breathing dragon, or is a sub-Saharan lizard, the world is your oyster (and your sculpture could be too!). It doesn't necessarily have to be a character; you could sculpt any kind of object.

Sculpting with polymer clay is a fun way to relax and let your creativity loose. You can achieve an intricate level of detail, using a variety of tools. Super Sculpey is a specialised oven-bake polymer clay, often used in the manufacturing of toys, jewellery, and figurines and can be cast in a variety of materials. In this course, you will learn how to sculpt with this high-quality product. You will also learn how to build a tinfoil and wire base ('armature'), which will reinforce the structure of your creation, so it may survive the distance.

Sculpting is immensely helpful for those wanting to improve their drawing skills, as you will begin to understand objects in a 3-dimensional format. It also serves as a steppingstone for those planning to pursue a career in the film industry as creature designers, props makers, stop-motion animators, prosthetic make-up artists and more.

This class is open to ages 12+. Both teens and adults are welcome!



\$199 for both days & includes all materials

Enrol online wsa.org.nz

Exhibition

Pot-Pourri II

Oct 17-Nov 7

Haydn Rive

Dont miss popping into our upstairs gallery space in the WSA office to view the last week of Haydn Rive's exhibition. Haydn is a long term WSA tutor and will have a variety of acrylics and watercolours to view.



Next Level Gallery/WSA Office
120 Victoria Street, Hamilton

**Open during office hours - Mon-Fri 8.30am-4pm
Sat 9am-11.30am**

(please phone ahead if making a special trip as the office is closed on some occasions)

Workshop

Enrol online to secure a place in a Jewellery Making Workshop being held on Saturday 11th November.

wsa.org.nz

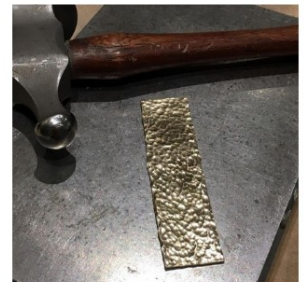
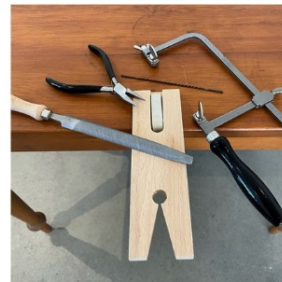
Time: 10am-1pm

Cost: \$140pp includes all materials and tools

Location: Studio 3, WSA

Date: 11th November

Copper, brass and sterling silver earrings.



Funnies

**I made a huge
to do list for
today.
I just can't
figure out who's
going to do it.**

Cool Funny Quotes.com



©2015 Scott Hilburn/Distributed by Universal Uclick

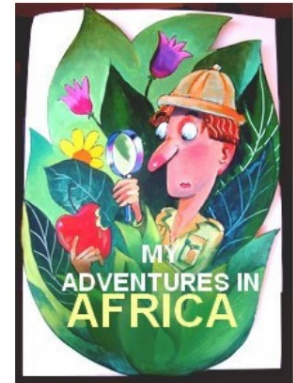
7/13

**If a cookie falls on the
floor and you pick it
up...
that's a squat, right?**

Impressions of Africa by Haydn (5)

Art work by the boys of Mazoe School

One of my roles at this Mission School for boys was to take art with the 3rd and 4th formers. The yearly budget was \$300. So it was down to crayons, cheap paper, powder paints or those cakes in trays and some scrubby brushes. I tried to show some of their traditional art of the past, but they saw that as a huge laugh. They loved colour and did wonderful patterns with paint and crayon over the top. Their landscapes had some really quaint perspectives too.



Calendar of Events and Exhibitions

NOVEMBER

SUN	MON	TUE	WED	THU	FRI	SAT
			1 Term 4 Classes Continue	2	3	4 Libby Vandy-Mines Exhibition ends at blue
5	6	7 Haydn Rive Exhibition Ends Next Level Gallery	8	9	10	11 Jewellery Making Workshop
12	13	14	15	16	17	18 Antony Densham opening 3-5pm at blue
19	20	21	22	23	24	25
26	27 Term 4 Classes End over the next 2 weeks dependant on when they started	28 Hannah Morgan Savage Exhibition Ends Mavis & Co Rototuna Clare Cramond & Anne Mickell Exhibition Starts at Mavis & Co Rototuna	29	30		

DECEMBER

					1	2 Antony Densham Exhibition ends at blue
3	4	5	6	7	8	9 Helena Skerlj-Rovers Exhibition Opens at blue
10	11	12	13	14	15	16 Sculpting Workshop
17 Sculpting Workshop	18	19	20 Kids Xmas Craft Workshop	21 Kids Xmas Craft Workshop Helena Skerlj-Rovers Exhibition ends at blue	22 Kids Xmas Craft Workshop	23
24 WSA Closed	25 Christmas Day	26 Boxing Day	27 WSA Closed	28 WSA Closed	29 WSA Closed	30 WSA Closed

31

WSA
Closed

Future Dates:

- Office reopens Monday 15th January
- January School Holiday Programme - 22nd -26th January - 5-12 years
- Term 1 starts from Monday 5th February

Sponsors

We would like to thank our sponsors for their support of the WSA.



Caiger Charitable Trust



Susie & Clifford Allen





A very special thanks to SHARP, who continue to help us substantially with printing.

SHARP
Be Original.

NEWSLETTER ADVERTISING

Whether you're a member or not, we are excited to hear about your art-related adventures, exhibition reviews or travels, accompanied by your own photos. These will be reviewed by the WSA and included if we have space and they do not conflict with our operations. The Executives decision is final. Please contact us at wsa@wsa.org.nz

WSA OFFICE AND ART SCHOOL

120 Victoria Street (above ArtsPost Gallery)
PO Box 1018, Hamilton 3204
07 839 4481

Office Hours:

Mon-Fri 8.30am-4pm

Sat 9.30am-11.30am

(these may vary, please check in advance)

artschool@wsa.org.nz for art school enquiries (Paulette)

wsa@wsa.org.nz for all WSA enquiries (Julie)

Website: www.wsa.org.nz

(Paulette works in the office 22 hours per week, if you need a faster reply please include Julie's email)

WSA EXECUTIVE COMMITTEE

Patron: Nancy Caiger

Treasurer & Chair: Rachael Hayton
Committee: Michelle O'Brien
Nicolas Wells
Melany Sutherland
Gemma Reid
Holly Tawhiao

Hon. Solicitor: Charlotte Isaac
Hon. Secretary: Julie Johnstone