



Art Connections

WAIKATO SOCIETY OF ARTS

PO Box 1018 Hamilton 3240 www.wsa.org.nz

Welcome to the May 2023 newsletter

The New Zealand Painting and Printmaking Awards were held at the Verandah function rooms on the 15th of April. The Judges for this year, Dr. Carole Shephard and Evan Woodruffe made a selection of 60 finalists from 417 entries, for the exhibition. From this there were 30 prints and 30 paintings to be chosen as award winners. This was a clear decision on the Judges part due to the award now having two main prizes in both Paint and Print and seen as a nod to the new direction of the awards, by recognising both mediums equally. Thank you to all the artists from throughout Aotearoa who entered. The Opening evening was well attended, with over half the finalists present from around the country and those living overseas.

Congratulations go to the following Award winners:

Jennifer Halli – Blue Skying – First prize in Printmaking

Tony Guo – Tilt – First prize in Painting

Struan Hamilton – Nontopia – Ruth Davey Merit prize in Printmaking

Cora-Allan Twiss – A Sample of Bush Flowers – Nancy Caiger Merit Prize in Painting

Garry Currin – Conversation with the Moon (2023) – Gordon Harris People's Choice Award

We would like to thank our sponsors for all their support and generosity to help make this year a success: the Print Council Aotearoa NZ, Chow Hill Architects, Vision Complete Earthworks, Susie and Cliff Allen, Lottery Waikato Community, Ruth Davey, Nancy Caiger, Golden Homes, Gordon Harris, Fusion Print – SCG, Exhibition Hire Services, the Verandah, Rare Studio, Black Creative and the Hamilton City Council. A big thank you to the curators of the exhibition, Melany Sutherland and Gemma Reid and to Stuart Bridson for his expertise in hanging the exhibition along with help from Dean McLeod. Thank you to the behind the scenes people who bring all the facets of the awards and exhibition together and the group of docents who volunteered their time to sit at the exhibition each day. This year we held two free workshops while the NZPPA was running, both run by Gemma Reid. The first one was a Figure Drawing workshop and the second one was Landscape views of the Lake, it was great to see some new faces in both these groups and people enjoying exploring their creative side.

The next main event on our calendar is the Small Sculpture Award which will be held at blue gallery, with the Opening on June 23rd. The exhibition will be curated by Gaye Jurisich and the Judge for this will be Andrea du Chatenier. Andrea is a respected academic and has spent many years lecturing in art and design. She currently teaches at UCOL in Whanganui. Entries close for this on the 8th of May, if you would like to enter, the details are on our website.

Wsa.org.nz

First prize for this is \$5000, sponsored by PAUA Architects.

Our exhibition spaces are constantly changing over every 3-5 weeks at blue, Mavis and co. and our small gallery upstairs. Haydn Rive will be exhibiting at Mavis and co. with his watercolours, while New Horizons is currently on at blue, with sand artist Nancy Tschetner and printmaker Sally-Ann Davies. Caroline Peacocke will be opening this week at the Office Gallery at WSA, with her exhibition, Fragile Feathers and Foliage Forays. Later in May, the exhibition Paintings and Sculpture, will be opening at blue, with several artists exhibiting in this. The opening will be on Saturday, May 20th from 1 – 3pm.

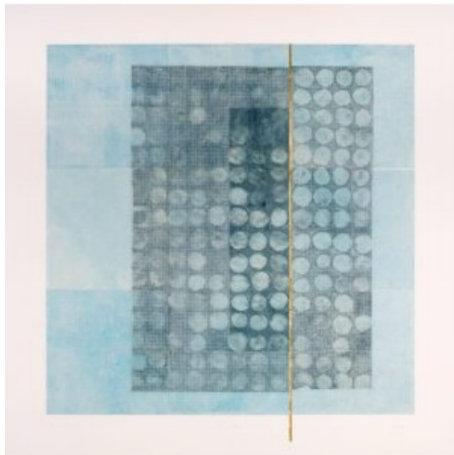
If you would like to be part of our exhibition volunteer team then please contact the office and let us know. This can involve, hanging art, taking down and wrapping art, sitting at an exhibition for a few hours or helping at exhibition openings. This can be once a fortnight, month, term or annually, every little bit helps.

NZPPA - New Zealand Painting & Printmaking Awards 2023

Congratulations to our 2023 winners!

Main Prize Winner Printmaking

'Blue Skying' by Jennifer Halli



Main Prize Winner Painting

'Tilt' by Tony Guo



Nancy Caiger Merit Prize Winner Painting

'A Sample of Bush Flowers' by Cora-Allan Lafaiki Twiss



Ruth Davey Merit Prize Winner Printmaking

'Nontopia' by Struan Hamilton



People's Choice Award Winner

This year's People Choice Award Winner is **Garry Currin** with his stunning Oil Painting 'Conversation with The Moon'.

"The Moon, always mysterious, a distant gaze. Night or day it exerts a quiet response and we can recognise our place. I like these reminders that we all have a special relationship with the force of the moon and this planet. It brings the weight back to the earth." Oil on paper [300gsm Fabriano]

Garry receives a **\$1000 Gordon Harris Art Supplies Voucher**. Well deserved.



Garry Currin receiving his voucher from Kate England - Store Manager Gordon Harris Albany



NZPPA - New Zealand Painting & Printmaking Awards 2023

Opening Event - Thursday Friday 14th April

Our NZPPA opening event was a wonderful evening with 3 of our 4 prizes winners in attendance. Thank you to all involved. Below are some photos from the night.

Dion Ormsby (WSA Executive)
- Performed Karakia and was our MC for the evening.



Left:: 2023 Judges Evan Woodruffe (Left) and Carole Shephard (Far Right) with Printmaking Main Prize Winner Jennifer Halli with her winning artwork 'Blue Skying'.



2023 Judges Evan Woodruffe (Left) and Carole Shephard (Far Right) with Printmaking Merit Prize Winner Struan Hamilton with his winning artwork 'Nontopia'.

Below: Sponsors Susie Allen (Far Left) and Cliff Allen (Far Right) with 2023 Judges Evan Woodruffe and Carole Shephard with Painting Main Prize Winner Tony Guo's winning artwork 'Tilt'. (Tony was out of the country at the time.)



2023 Judges Carole Shephard (Far Left) Evan Woodruffe (Left) Sponsor Nancy Caiger (Far Right) with Painting Merit Prize Winner Cora-Allen Lafaiki Twiss (in Blue) with her winning artwork 'A Sample of Bush Flowers'.



Struan Hamilton with his artwork 'Nontopia'.

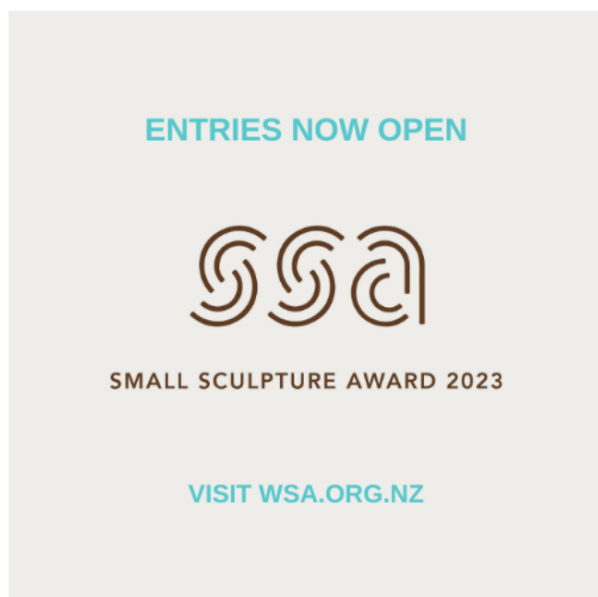


Jennifer Halli with her artwork 'Blue Skying'.



Cora-Allen Lafaiki Twiss with her artwork 'A Sample of Bush Flowers'.

Awards 2023



All entries must be received on or before the 8 May 2023. Finalists and non-finalists will be notified by 5 June 2023. The awards and exhibition will be held on 23 June, 2023 at 5.30pm in blue Gallery, 3 Anzac Parade, Hamilton.

NYAA Entries close 18 June 2023

All entrants notified as Finalists or not 27 June 2023. Delivery of artwork no later than 24 July 2023. Opening and Awards evening 28 July 2023 5.30-7.30pm. Exhibition dates 29 July – 13 August 2023



Members Exhibition 2023



This years Members exhibition will be held at blue Gallery from Saturday 19th August to Sunday 10th September.

Entries close Thursday 10th August.
(Entry Forms attached to this newsletter or available on our website wsa.org.nz or in our office.)

Term 2 Classes

Most of our term 2 classes started in the last week, however we do have a couple still to start in the next week or two with spaces available.

Our studios are a lovely place to create in the winter months. All 4 studios are well heated, full of light and sun. Our tutors are highly skilled in their fields and are passionate about passing their knowledge onto others. Small class numbers give you maximum benefit and customised tutoring.

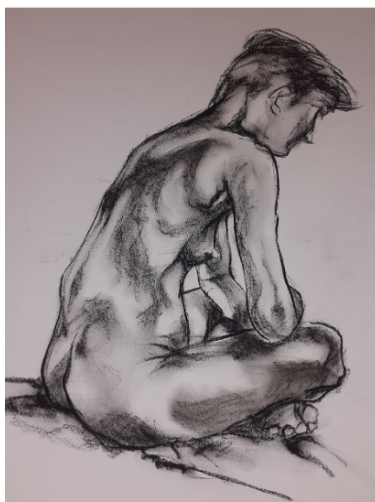
Enrol now to secure your place. wsa.org.nz

Shop now. Pay later.
Always interest-free. **afterpay**

**Starting Friday 12th May - 6 weeks
10am-12pm**

Drawing & Painting the Body

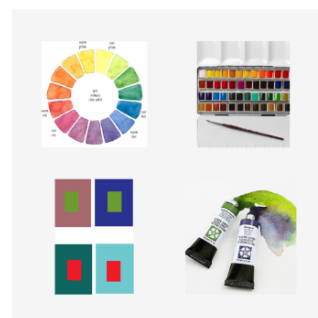
Suitable for beginners and continuers. Tutor Ellie Lee-Duncan will guide you with the techniques and tips needed for life drawing. Model included.



**Starting Thursday 4th May - 8 weeks
4pm-5.30pm**

Childrens Art Class for 5-9 year olds

In this class children learn skills and techniques by using several art mediums. Eg Watercolour, Painting, Sketching, Pastels, Collage, Colour Theory and more. Learning core foundation skills allows children to grow and expand their creative experience. Suitable for beginners and continuers. Tutored by Paulette Bruns.



Printmaking News

In this new section to our newsletter we will be bringing you a variety of news, information and other interesting pieces from the world of printmaking both here at the WSA and further afield. This month we feature one of our long term and very talented printmaking tutors Caroline Peacocke. Caroline teaches Experimental Printmaking on Monday evenings from 5.45pm-8.15pm.

Caroline Peacocke

Painter, Printmaker & tutor of Experimental Printmaking classes at WSA.

I grew up in the Waikato, studied at University of Otago, lived in the South Island then Melbourne for years, and after travelling overseas – moved back to the Waikato in 2002 to raise my family in my home-place.

Wanting to broaden my creative horizons, and be inspired by other artists and art practices, I joined WSA and attended etching and relief print classes, ahead of taking on a tutoring role in 2012.

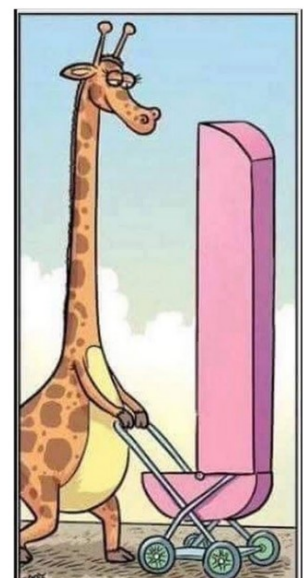
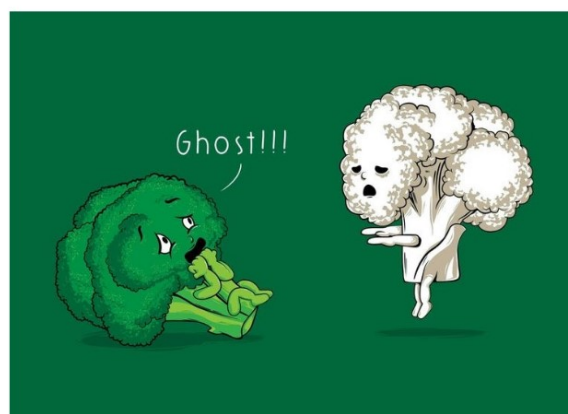


The experimental printmaking class is a great fit for who I am and what I believe in. I relish sharing my learnings with students & fellow creatives as they absorb the principles of relief printmaking and what else can transpire beyond the basics: interweaving colour, texture & a variety of techniques. The pleasure of seeing a student's love of the medium grow is rewarding and re-inspires my own creativity. For myself - unleashing expected constraints and allowing opportunities to evolve on the printed surface is satisfying and often feeds a body of work that evokes memories, symbolism, emotions and experiences.....something I find more easily expressed in the visual mediums I engage with.

Printmaking, painting, gardening and being in the outdoors - all feed my soul.

It's a pleasure to be able to be part of WSA: an organisation that embraces sharing our creative passions with others.

Funnies



Workshops

Watercolour 'Negative Painting' Workshop

Sunday 21st May - 10am - 3pm

\$95pp. All materials included.

Join highly skilled and experienced WSA Watercolour Tutor Paulette Bruns for a day of learning the tricks to negative painting in Watercolour.

In this 'hands on' workshop you will create 1 or 2 small step by step paintings.

Negative painting in watercolour is a unique, layered, 'see through', method to create many effects like 'looking through water', shine and ripples on water as well as many other subjects like flowers etc where you can portray a beautiful transparent effect of seeing colours layered below other colours helping create the effect of depth in a painting.

Not suitable for brand new beginners.

Students need to have done either a beginner watercolour workshop or minimum half a term of watercolour classes.



Enrol online wsa.org.nz

Designing with Plants

Pocket Garden Design Workshop

Learn how to create beautiful designs for small areas with a qualified Garden Designer.

This one-day workshop introduces some fundamental garden design skills and helps students visualize and plan compact outdoor spaces. *Limited numbers per workshop to maximize support for students.*

When: Saturday 27th May

Time: 10am-3pm

Where: Waikato Society of Arts, 120 Victoria Street, Hamilton (Upstairs in Studio 2)

Price: 70pp



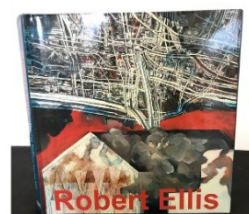
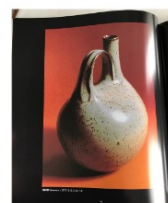
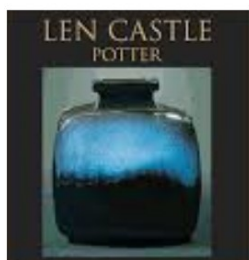
Garden Design Tutor John-Paul Oliver



As a Garden Designer I get excited about outdoor spaces that work well for people and look beautiful. I also know that the garden design ideas I use to guide my designs, can be learnt and used by anyone, in their own homes. These basic skills can be applied to many situations from arranging pot-plants, to designing courtyards or organizing beds of perennials. I have designed this course to introduce people to some fundamental techniques and guide them in applying them. I hope that you will enjoy the process as much as the end result. **Enrol online at wsa.org.nz**

Thank you

We would like to say a huge thankyou to the **family of Ron Sang** and **Ron Sang Publications** for the donation of 5 books to the WSA Library. We are extremely grateful for their generosity. Len Castle's 'Potter' Book is on the table in the library for viewing, and the remaining 4 books are currently on display in our office if you wish to pop in to view.



Exhibition - Mavis & Co Cafe Rototuna

'Watercolours' by Haydn Rive

3rd May - 6th June

Make sure you call in to Mavis & Co Cafe at the Rototuna Shopping Centre to view the latest exhibition by WSA tutor Haydn Rive. 8 works will be on display in the function room at the rear of the cafe. It's a lovely space to stop and enjoy and coffee and something to eat. Open 7 days.



**Rototuna Shopping Centre
2/44 Horsham Downs Road**



Exhibition Opportunity

If you would like to have an exhibition at Mavis and co. Rototuna, please contact Julie at julie@wsa.org.nz to discuss.

There is no hire fee and only 10% commission is taken on any sales. This is a good space for 8 x A3 sized pieces of works hung in a line as a guide. We have had some great sales. You also have the opportunity to have an opening, with catering organised through Chace and his team.

MAVIS AND CO

café • bar • bistro

Exhibition

**Tuesday 2nd May to Monday
22nd May**

WSA tutor Caroline Peacocke will be exhibiting in our Office Gallery Space from Tuesday 2nd May until Monday 22nd May. Be sure to pop up to see these artworks.

Office Gallery Space is open Monday to Friday 8.30am-4pm and Saturday 9.30am-12.30pm.

(Occasionally our office is shut for small periods in these times. Phone ahead first if you are making a special trip in to view.)

07 839 4481



**wsa
art**
WAIKATO SOCIETY OF ARTS

Fragile Feathers & Foliage Forays

An exhibition by Caroline Peacocke

Inspired by Phoenix-like
rebirth, hope, renewal, & transformation

2nd – 22nd May 2023

NEXT Level Gallery
Upstairs @
Waikato Society of Arts
120 Victoria St
Hamilton

blue Gallery

'New Horizons' Creations of sand by Nancy Tschetner & Sally-Ann Davies Printmaker

20th April - 11th May

If you haven't already called in to view this exhibition, be sure to view before 11th May.



blue gallery
3 Anzac Parade, Hamilton



blue Gallery

'Paintings & Sculpture' by The Monday Group with Sylvia Sinel.

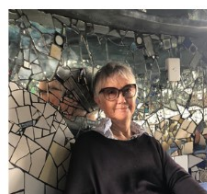
Opening event
Saturday 20th May
1pm-3pm.

Exhibition runs until 10th June

Open Wednesday – Saturday
11.30am – 3.00pm



Jane Finch



Ann Harlow



Sylvia Sinel



blue gallery
3 Anzac Parade
Hamilton



Garry Moore



Anne Carter-Jones



Pat Berry



Donna Dold



Susie Verry

Haydn's Wistful Musings from the past:

(Fitz Hugh Lane 1804 ~ 1865) Luminism

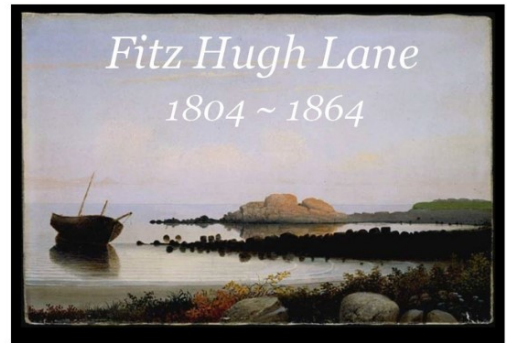
Barbara Novak in her book - "American painting in the 19th century" describes Fitz as the "most transparent eyeball" referring to the Luminists.

They were artists with a profound sense of realism carefully organized by principles of design.

Luminists saw nature as a manifestation of God's Grand plan. It was to study nature with a depth of feeling. "This was accomplished through a genuine love and understanding of the elements of nature – discernible in the intimate arrangement of leaves on a bough – and their arrangement to reveal the poetry inherent in a given scene."

Fitz invites us to view his works as a spiritual experience.

Few could have painted the extraordinary beauty of the azure coasts of New England with the expressiveness and luminosity of Fitz Henry Lane.



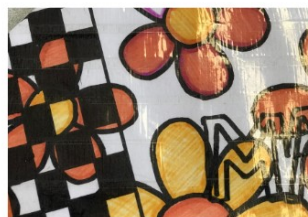
Soon after Lane's death, his work fell into obscurity with the rise of French Impressionism.

It was not till the 1930's that Lane's art was rediscovered, and in today's market will fetch between three to five million dollars.



April School Holiday Programmes

Our recent school holiday programmes turned out some fantastic creations this year. Our 5-12 year olds made a variety of artworks from a detailed, layered Easter chick painting, drawings of cartoon characters, miniature artworks, oil pastel and dye along with clay creations and plenty of their own creations. The 12-17 year olds in the Sculpture and 3D Character design programme got to use a special clay polymer to create amazing sculptures. Be sure to look out for these programmes that will run in the July holidays.



Exhibition

**The first \$5000 of sales (inc. Commission) are being donated to the WSA.*

'His, Hers & Mine' by David Lloyd

20th April - 20th May

Hanrad Bespoke Rugs are hosting an exhibition by David Lloyd called 'His, Hers and Mine' opening 20th April through to 20th May 2023 at **HANRAD BESPOKE RUG Gallery**, 137A Alexandra St, Hamilton CBD. info@hanrad.com.

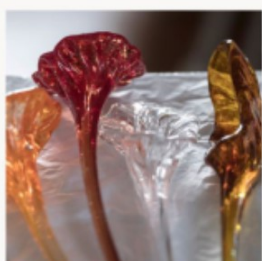
Independent advert by member.

"Hamilton watercolour artist and wsa member Martin Necas has been selected as one of 120 New Zealand artists to exhibit at Auckland art show on 18-21st of May at the cloud on Auckland's waterfront. Come and meet the artist and enjoy the largest art show in New Zealand!"



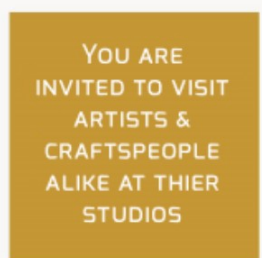
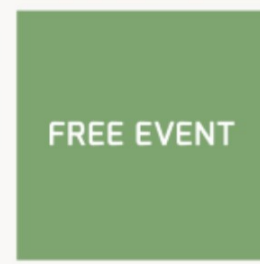
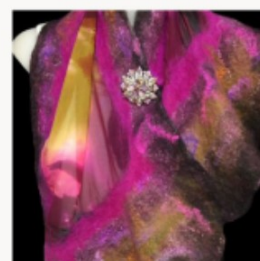
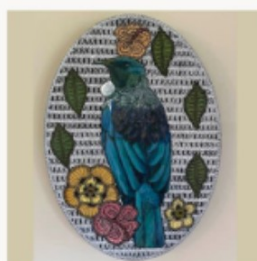


COME EXPLORE THE GORDONTON COUNTRYSIDE



SATURDAY 6TH
& SUNDAY 7TH
MAY 2023

10 AM - 4 PM



Trail Maps will be available closer to the event from:

**Wairere Nursery, The Mandarin Tree Gallery, FirePot Cafe, Cornerstone
Alpaca Stud & Woodlands Garden Grove Cafe**

**Artists works are available for sale
(Cash Sales & Bank transfers)**

For more details please visit our Facebook page:



The Gordonton Art and Design Trail

Phone. 022 107 7562

Calendar of Events and Exhibitions

MAY

SUN	MON	TUE	WED	THU	FRI	SAT
Term 2 Classes Continue	1 'New Horizon' Exhibition continues at blue Gallery	2 Haydn Rive's Exhibition Opens at Mavis & Co Cafe Rototuna	3 Caroline Peacocke's Exhibition Fragile Feathers & Foliage Forays on display in the WSA office gallery	4	5	6
7	8 Small Sculpture Award Entries Close	9	10	11 Last Day for viewing 'New Horizon' Exhibition at blue Gallery	12	13
14	15	16	17	18	19	20 'Paintings & Sculpture' Exhibition Opening Event at blue Gallery
21	22 Caroline Peacocke's Exhibition Fragile Feathers & Foliage Forays closes in the WSA office gallery	23	24	25	26	27
28	29	30	31 Term 2 Classes Continue			

JUNE

				1 Term 2 Classes Continue	2	3 No Classes King's Birthday Holiday
4	5 No Classes King's Birthday Holiday	6 Term 2 Classes Continue	7	8	9	10 Last Day for viewing 'Paintings & Sculpture' Exhibition at blue Gallery
11	12	13	14	15	16	17
18 NYAA Entries Close	19	20	21	22	23 Small Sculpture Award Opening Event blue Gallery	24
25	26	27	28	29 Term 2 Classes End	30	

Future Important Dates:

- Friday 28 July NYAA Awards & Opening Event
- Thursday 10th August WSA Members Exhibition Entries Close
- Saturday 19th August - 10th September WSA Members Exhibition

July School

Holiday Programmes start
Monday 3rd July to Friday 14th July

Sponsors

We would like to thank our sponsors for their support of the WSA.



TRUST WAIKATO
TE PUNA O WAIKATO



Caiger Charitable Trust



Susie & Clifford Allen



Gordon Harris
THE ART & GRAPHIC STORE

AUTUMN SALE

PRICES FALL
ON QUALITY ART MATERIALS*

AUCKLAND HAMILTON WELLINGTON
CHRISTCHURCH
In-store & Online

SALE ENDS 03/07/23
www.gordonharris.co.nz

*SELECTED PRODUCTS

A very special thanks to SHARP, who continue to help us substantially with printing.

SHARP
Be Original.

NEWSLETTER ADVERTISING

Whether you're a member or not, we are excited to hear about your art-related adventures, exhibition reviews or travels, accompanied by your own photos. These will be reviewed by the WSA and included if we have space and they do not conflict with our operations. The Executives decision is final. Please contact us at wsa@wsa.org.nz

WSA OFFICE AND ART SCHOOL

120 Victoria Street (above ArtsPost Gallery)
PO Box 1018, Hamilton 3204
07 839 4481

Office Hours:

Mon-Fri 8.30am-4pm
Sat 9.30am-12.30pm

(these may vary, please check in advance)

artschool@wsa.org.nz for art school enquiries (Paulette)

wsa@wsa.org.nz for all WSA enquiries (Julie)

Website: www.wsa.org.nz

(Paulette works in the office 22 hours per week, if you need a faster reply please include Julie's email)

WSA EXECUTIVE COMMITTEE

Patron: Nancy Caiger

Committee: Michelle O'Brien
Nicolas Wells
Melany Sutherland
Gemma Reid
Holly Tawhaio

Treasurer & Chair: Rachael Hayton
Hon. Solicitor: Charlotte Isaac
Hon. Secretary: Julie Johnstone