



Art Connections

WAIKATO SOCIETY OF ARTS

PO Box 1018 Hamilton 3240 www.wsa.org.nz

Welcome to our May Newsletter. We have been busy behind the scenes while we move from Level 4 to Level 3, changing term dates, classes, exhibitions and trying to navigate a way around Covid-19 and the safety of our members and students as we look toward opening later this month, all going well. Firstly, thank you to our tutors who have been sending through activities to have online and emailed out to students, to help them while away some of their time during Level 4. We are really lucky to have such a skilled and dedicated team, who enjoy their students and love to keep connected with them even when the classes aren't running at this time. Their flexibility to help and accommodate the changes has been appreciated.

Our term 2, if we are at Level 2, will start on May 18th and run for six weeks, however we will have some differences while we work in with the Health Department rules. We will not be running our younger classes, 5 to 9 year olds as the logistics with social distancing, cleaning of materials and parental traffic flow within the building does not make this a safe or simple task. We hope everyone can respect this decision and realise that right now the safety of everyone is our priority. For the other art classes that we will be running, we are limiting the numbers so we can have social distancing upheld and will require everyone entering the building to sign in to aid with contact tracing, if necessary. This will either be done at the office or if it is after hours with the tutor.

For now, our Next Level Gallery will not open until Level 2, as the WSA is still closed in Level 3. Again, people will need to sign in at the office before going into the Gallery. Unfortunately for some of our exhibitors their exhibitions were never seen or even hung so hopefully we can accommodate them later in the year. Haydn Rive's class exhibition will still be in the Gallery until May 20th, so please make sure you come and have a look, there is a lot of great work to see, some of which has been posted online for you to view.

We have a lot of exhibitions to enter over the coming months, first up being the NLG Members exhibition on June 4th, 2020. Please make sure you take note of the calendar dates for all of these toward the back of the Newsletter.

You will be able to book and pay online for term 2 from Monday May 11th through our updated website, if you haven't already done this through the office earlier. Please remember class numbers have been limited. You will be receiving an email shortly regarding the new website and what you will need to do to change the password you have been given or if you need to renew your membership that may have recently expired. Please have a good look around the website, the Newsletters will now be on there as well as entering Awards and updating or creating your artist profile in the Artists section. If you have any enquiries about this please email wsa@wsa.org.nz as we are not back in the office full time and are still working from home, until then.

Please keep creating and staying safe in your bubbles as they expand at each level and hopefully we will see all of you back at the WSA very soon.

WAIKATO SOCIETY OF ARTS

JOIN AS A MEMBER FOR 2020

BENEFITS include:

ENTRY INTO ANNUAL EXHIBITIONS

ARTIST PAGE ON WSA WEBSITE

MONTHLY NEWSLETTER

FREE ARTIST TALKS

DISCOUNTED WORKSHOPS

DISCOUNTED ART CLASSES

DISCOUNTS AT LOCAL BUSINESSES

**EXHIBITING IN OUR NEXT LEVEL
GALLERY.....**

Follow us:

Waikato Society of Arts

<http://www.facebook.com/waikatosocietyofarts>

<http://www.instagram.com/artwaikato>

Next Level Gallery

<http://www.facebook.com/nextlevelgallery>

<http://www.instagram.com/nextlevelgallery>



National Youth Art Award



**CALL FOR ARTISTS SHORTLY
ENTRY FORMS WILL BE UPLOADED IN THE NEXT
FEW WEEKS**

ENTRIES CLOSE FRIDAY 27TH JULY 11.59PM

FINALISTS NOTIFIED 10TH AUGUST

**NYAA EXHIBITION 10TH SEPT-8TH OCT IN
ARTSPOST GALLERY ALONGSIDE OUR ANNUAL
WAIPRINT EXHIBITION**

TWO AGE CATEGORIES

15-19 YEARS OLD

20-25 YEARS OLD

NEW AGE CATEGORY ADDED

**13-14 YEARS OLD EMERGING ARTIST
AWARD**

All art mediums can be entered.

Artwork cannot exceed 1200mm x 1200mm.

Maximum weight of artwork cannot exceed 10 kilograms.

Entries limited to 2 entries per artist.

Entry Fee:

\$30 for 1 entry.

\$50 for 2 entries.

**EMAIL WSA@WSA.ORG.NZ
FOR MORE INFO**



Glass Casting Summer Workshop

- held at Corban Estate in Auckland January 2020

(Sybille was also tutoring a summer workshop here.)

Steps:

- 1-Object fashioned & made from clay.
- 2-Refined, refined, refined.
- 3-Plaster mould made over clay & left to set.
- 4-Clay removed from plaster cast; plaster cleaned & dried.
- 5-Wax melted & poured into plaster mould; left to set (not too long or could break once pulled out); up to 3 wax models were made.
- 6-Wax models shaped & worked until happy with result/s. Best wax model chosen.
- 7-Clay 'reservoir' added to wax model to add extra depth (so glass doesn't pour out once in kiln).
- 8-New plaster mould made around wax model; left to set until hard.
- 9-Wax steamed or melted out of the plaster mould.
- 10-Mould set up in kiln, with terracotta pot set on top & glass billet suspended in terracotta flower pot.
- 11-Kiln heated over a series of steps to ensure glass melts at correct temperature
- 12-Kiln temperature drops over a series of temperatures- to ensure glass does not cool too quickly & crack.
- 13-Kiln process can take 2 weeks.
- 14-Plaster mould removed from kiln & carefully broken.
- 15-Glass removed & washed.
- 16-Sanding & polishing begins: several grades of diamond & sand paper used. Can take 8 hours to several weeks - depending on level of perfection required.
- 17-Final cleaning & touches added to enable glass to be hung.



**CP Art Print
that inspired
the glass
feather**



Clay Model



**Plaster mould no.1 with
wax setting in it.**



**Two wax
feather models**



**Plaster mould
no.2 with waxed
waiting to be
steamed out**



**Glass inside mould
no.2 after being
fired in kiln.**



**Glass removed from
plaster mould: Now for
hours of sanding & polishing**



**Finished piece - able to sit on
shelf or can hang on wall**



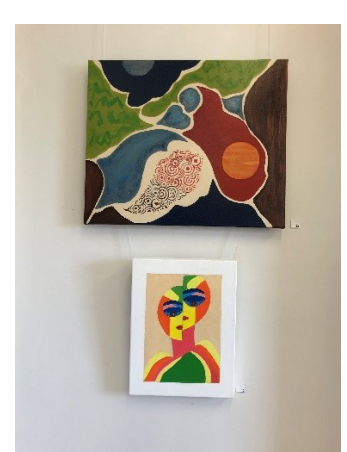
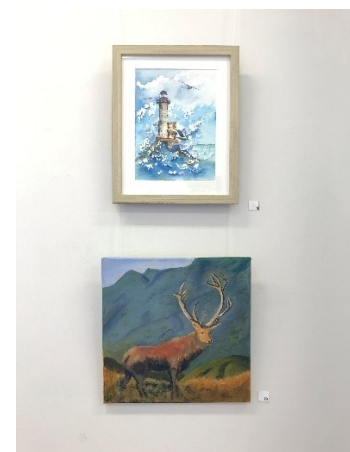
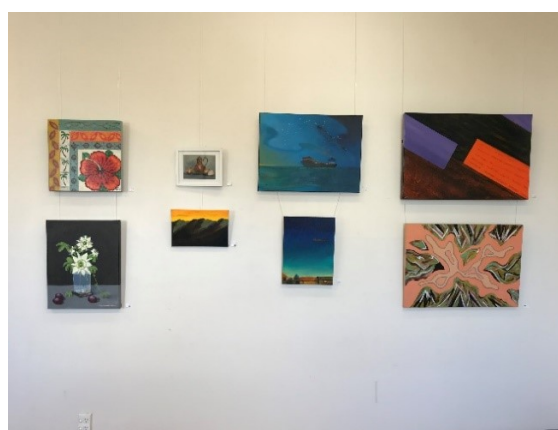
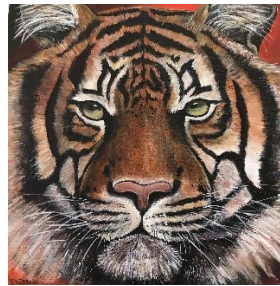
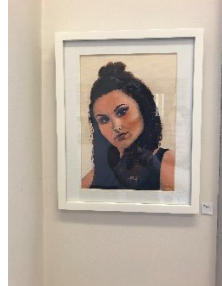
May 2020

Next Level Gallery

- Current Exhibition 'Recent Works' by Haydn's Acrylic Painting Class

Below are the stunning artworks by students in Haydn's Acrylic Painting Class. Unfortunately their exhibition hasn't been able to be viewed in person due to the Covid-19 lockdown. If you are interested in purchasing any of the artworks please email wsa@wsa.org.nz. Price list is attached to this newsletter. (If you aren't sure which painting is what price, or need to know sizing; contact us & we will find out from the artists. Unfortunately I wasn't able to go and take note of this before the lockdown. Some of the numbers do show in the photos beside the artworks.)

You can also view the artwork on our [Next Level Gallery facebook page](#) which has a video link of the exhibition.



WAIPRINT 2020 at ArtsPost

We're pleased to feature our own Ruth Davey as Guest Artist for WAIPRINT this year. Running concurrently, there will be an exhibition of Ruth's work upstairs at the Next Level Gallery.

Ruth, a WSA Life Member, was responsible for introducing printmaking into the WSA Art School curriculum in the 1970s. Last year her NLG exhibition, 'Ruth Davey Revisited', saw landmark sales. The proceeds from all sales of her prints go to the new Ruth Davey Merit in Printmaking award at the New Zealand Painting and Printmaking Awards.

WAIPRINT and the NLG exhibition will open on Thursday, 10th September. Entries for WAIPRINT will be due at the beginning of September and entry forms will be available in a couple of months.



Lockdown Creativity

During lockdown we have received some wonderful examples of our students and tutors using their creative skills to bring cheer to passers-by or to lift their own spirits. We would love to see other 'lockdown' activities some of you have been up to. Feel free to send them to artschool@wsa.org.nz

Also don't miss checking out the attachment we have included titled colouring in. It has some fantastic links to art and colouring in projects for adults and children, sent in by our wonderful tutors Sybille and Monica.

Below is a fabulous painting done by our talented tutor Haydn of the Milford Sounds. A place many of you will recognise I'm sure. The following 2 pages have more creativity from students and tutors. Enjoy!



Lockdown Art

CONFRONTATION WITH INSPIRATION DURING ISOLATION

Most Kiwis would patriotically attest to New Zealand being the most beautiful place on Earth. Of course it is. But even the grandest splendour would get a bit bland during prolonged isolation. By week 2 of lockdown, I had already become acquainted with every crack in the pavement, every tree and every fence-post within a radius that would be considered a reasonable distance to venture without risking arrest. Boredom and apathy set in. How do you find the inspiration to do any painting? I needed a new approach. As I was tidying my cupboards and organising my notes from WSA classes, I came across a quote from my instructor Paulette Bruns: "...with experience, you will look differently at the world; you will start to analyse and appreciate light and colour". Being a relative newcomer to painting, I had not understood the full meaning of these words. But now, as I was seeing the same cracks in the pavement, the same trees and fence-posts again and again, something in my perception started to stir. I began to appreciate how different everything looked depending on the time of day, the angle of the light, the cloud cover, in the dry or in the wet. And then autumn set in with its glorious burst of colours and all the familiar scenery became transformed into one psychedelic tapestry. Same subject. Thousands of variations. I no longer begrudge my mundane walks. They have transformed into journeys of discovery and inspiration. One such walk inspired the painting below. Just an ordinary Hamilton gully with a creek running through it.

Martin Necas, Watercolour Student



Lockdown Art

Here is an example of what I've been up to during Lockdown! The junction box placed outside our gate had been graffitied a year or so ago with pale blue paint. I always intended to paint over it and have now completed the task. I used a design I had done to stitch in tapestry wool for one of our dining room chair seats (a work in progress). Kind regards, Ann Harlow (Monday Group)



#environmentalart

ONE OF OUR TUTORS
GAYE JURISICH
CREATED THIS
FABULOUS
INSTALLATION OUTSIDE
HER HOME TO CHEER
PEOPLE UP ☐

Artyfacts from Haydn

Touring with the Fantin- Latours: 9 Marie Yolande and Sonya

This is a portrait of 12 year old Marie-Yolande de Fitz-James.

It is oil on fabric, 50 x 42 cm painted in 1867.

She was the daughter of Edouard de Fitz-James. Fantin did a series of studies of her family members for a planned large group portrait which never took place.

However, we do have this exquisite delight all in muted tones.

Now if you have ever tried to paint children as I have done of my own they are most difficult to catch the likeness. This is due to the fact that they never sit still for too long and you have to draw a dozen poses at the same time. So spare a thought about the genius in this work.

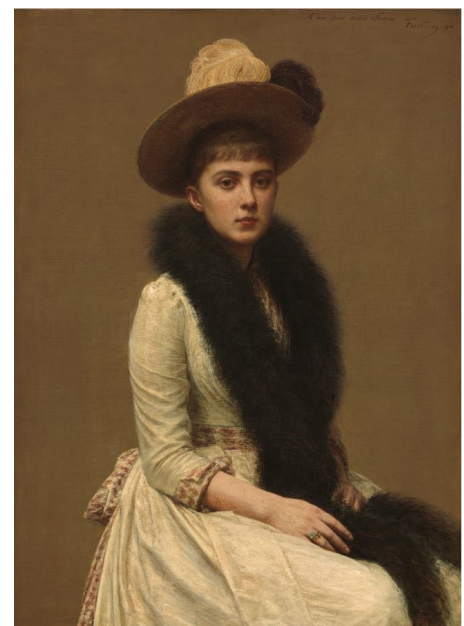
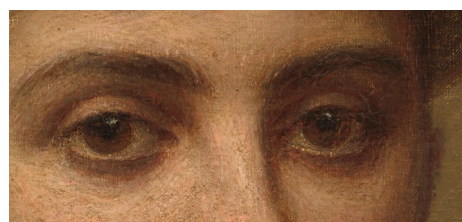


I am reminded of Velazquez who did a similar portrait of a little girl possibly about the same age. Was there nothing he could not do?



Velazquez – Portrait of a little girl. (1640)

Sonya (1890) on the other hand could sit for Henri as long as he liked.





WAIKATO SOCIETY OF ARTS

STUDIO HIRE & BIRTHDAY PARTIES

contact wsa@wsa.org.nz for more info
or 07 839 4481 or www.wsa.org.nz

If you would like to hire one of our studios for a Birthday Party, run a workshop, have a meeting or anything else where you need a space; then contact our office to see what we can do to make it work for you.

Our parties can be run by us; you can choose from several themes or we can follow what you would like & you can supply your own materials. Generally they run for 1-2 & half hours depending on age.

If you are holding a workshop or a meeting we have several options along with a digital projector available for use. We can accommodate most requests day or evening.



For hire:

8 interlocking display panels. 1200mm x 1500mm with 2100mm high stands. \$20 per panel, you will need a minimum of 3 to support free standing.

Contact the WSA office for more information or bookings.

wsa@wsa.org.nz

07 8394481



Calendar of Events and Exhibitions



Term 2 Classes - Restart	Monday 18th May - (6 weeks)
To Be Confirmed around May 11th when we are at the end of Alert Level 3. hopefully.	
NLG Vivien's Class Exhibiton	21st may—3rd June
NLG Members Exhibition	Entries in by 4pm Monday 1st June
NLG Members Exhibition	Thursday 4th June –1st July
NLG Paulette's Watercolour Classes Exhibition	2nd July—29th July
School Holiday Programme	Monday 6th July –17th July
Ukiyo-e Workshop with Sybille	10th July—12th July (tentative dates)
Term 3 Starts	Monday 20th July - (9 weeks)
National Youth Art Awards	Entries Close Friday 27th July 11.59pm
NLG Nici's Class Exhibition	30th July—12th August
NZPPA Awards—Entries Close	Friday 7th August @ 11.59pm
NYAA	Finalists notified by 10th August
ARTSPOST Members Exhibition	6th August—6th September
NZPPA Awards—Finalists notified by	Monday 24th August by 4pm
Waiprint Entries Close	2nd September
NYAA & Waiprint Exhibition	10th September—5th October
Ruth Davey Print Exhibition –NLG	10th September—7th October
NZPPA Opening & Prize giving	Friday 2nd October @5.30pm
Term 4 Starts	Monday 5th October (8weeks)
NZPPA Judges Talk	Saturday 3rd October @10am
PCANZ Talk	Saturday 3rd October
NZPPA Exhibition	3rd October—5th October

Please express your interest if you want to exhibit at The NEXT LEVEL GALLERY in 2020.

Email the office at wsa@wsa.org.nz

We would like to thank our sponsors for their support of the WSA.



CREATIVE WAIKATO | AUHA TAINUI

THE PHILIP VELA FAMILY TRUST



the FRAMING WORKSHOP



chowhill



Sir John Logan Campbell Residuary Estate





SALE FROM 31/03/20 TO 26/05/20

ANNIVERSARY

SALE

ONLINE & INSTORE

385 ANGLESEA STREET
HAMILTON



www.gordonharris.co.nz

FROM THE EDITOR –PAULETTE BRUNS

This WSA Art Connections Newsletter could not be created without contributions from members.

If you have articles you think suitable for our newsletter, please let me know.

A very special thanks to **SHARP**, who continue to help us substantially with printing, and Warehouse Stationery, corner Ward and Anglesea Street, for copy paper.

NEWSLETTER ADVERTISING RATES

A GREAT WAY TO SUPPORT THE WSA

Inserts \$80 per page (printed and delivered to WSA)

Full Page \$240 (available only if space available)

Half Page \$120 colour

Quarter Page \$70 colour

Opportunities and exhibitions

and Member's short ads – up to five lines are free.



warehouse
stationery

SHARP

Be Original.

WSA OFFICE AND ART SCHOOL

120 Victoria Street, above ArtsPost Gallery
PO Box 1018, Hamilton 3240, Phone 07 839 4481

Mo - Fri , 8.30am - 4pm

artschool@wsa.org.nz for art school

wsa@wsa.org.nz for all WSA enquiries

Website: www.wsa.org.nz

Editor: Sybille Schlumbom

WSA EXECUTIVE COMMITTEE

Patron: Joan Fear

President:

Committee:

Michelle O'Brien

Mark Dyer

Nicholas Wells

Melany Sutherland

Gemma Reid

Treasurer:

Hon. Solicitor:

Hon. Secretary:

Rachael Hayton

Charlotte Isaac

Julie Johnstone