

Welcome to the May newsletter!

It's hard to believe we are this far through 2024 already. We hope you have been able to see the NZ Painting and Printmaking Awards exhibition on until 5 May in the artspost galleries. We had a successful opening on 12 April and have had a steady flow of people through since. We would like to thank all our sponsors who have been involved with making this another successful and enjoyable event for the artists and those who were awarded prizes. If you would like to become a sponsor, please contact us as we are always happy to discuss what form this can be to suit you as much as our needs. On April 20th we hosted five of the finalists for artist talks in the galleries to hear more about their work and their practice. This was such an enlightening conversation learning how they refine their skills, constantly evolving, learning and approaching their work intellectually. Thank you to Sybille Schlumbom, Steve Lovett, Nicol Sanders-O'Shea, Michele Rumney and Alison Murray. Following on from this we hosted four more artists on April 27th. Hollie Tawhiao, Nadia Gush, Caroline Peacocke and Erin Monique-O'Brien. It was such a treat to have a strong Waikato representation and for these artists to share their knowledge and time with us. Please show your support by visiting the NZPPA while it is still on. Thank you for your support towards our fundraising, through sales, to keep bringing this prestigious annual award for NZ artists.

The school holiday program has been and gone with lots of happy little souls coming and going with amazing artistic creations and keeping our studios busy while the term classes had a break. We are back into it from 29 April with term two classes starting. We still have spaces in some of our classes that start later in the term and children can join most of our classes through the term if you're still waiting on winter sport days and times. As previously mentioned, we promote small class numbers and tutors who teach proper art skills and techniques such as colour theory, drawing perspective, how to use art equipment correctly like holding a brush, and art materials that work best for different mediums.

Blue gallery closed on 30 April, finishing with two fantastic exhibitions following each other. Thank you to all the artists who supported blue and gave us so much joy seeing all their work on display, fun openings and a lot to talk about each month. We hope to see you all at artspost to support the exhibitors booked right through into 2026 so far. If you feel you have time to help with odd jobs around the WSA and artspost then please contact wsa@wsa.org.nz or give us a call so we can take advantage of your skills as needed. As a not for profit we always rely on volunteers to keep things working behind the scenes.

Continued from page 1 ...

Joan Fear was our long-time patron, well respected, admired and prolific artist of the WSA and it is our pleasure to present her exhibition at artspost, opening on 11 May for all to enjoy and remember her from the large amount of works that will be displayed for sale. At the same time, we will have the Grey St. Studio Artists (formerly Sandz gallery) on in the Ruth Davey gallery. You can come along and meet these artists on Sunday, May 5 from 1-2pm.

We are still looking to add to our Executive Committee and in other areas of the WSA. If you feel you have skills that would enhance the team, we have then please contact wsa@wsa.org.nz to register your interest and give us some idea of what you can add to keep WSA working so well. We can then come back to you if your skill set is what we need as we manage the increase in operations from taking over artspost again. Many hands make light work, and our small team are doing a great job but as volunteers we still need other members and community members to come forward with their expertise to help keep us sustainable on many levels. You may not think you have any skill to offer but until we hear from you how could you know?

WSA Executive team

artspost

galleries

'Waikato Pastoral I' by Joan Fear
signed and dated 1983. Size (framed) 680 x 680 mm

Joan Fear (1932 - 2022) : The Works

11 May - 9 June

Joan's posthumous exhibition presents her experience of life recorded in oils, acrylics, pencil, pen, pastel, conte, watercolour, ink, dyes, charcoal and ceramics, in a selection of Joan's work from the 1950's through to 2022, when she stopped making work aged 90.

Sixty plus years of acquired skill, mastery of media and dedication to her practice can be seen at artspost in Hamilton 11 May - 9 June 2024.



"When I paint, I am playing with colour, texture, space, time - all that: but I am telling a story - maybe just for myself, maybe not: it doesn't matter. What does matter, at least to me, is that the story involves me - that I mean it, that my experience of life is put there." Joan Fear (1932 - 2022)



New Zealand Painting and Printmaking Awards 2024

artspost
galleries

Congratulations to our 2024 winners!

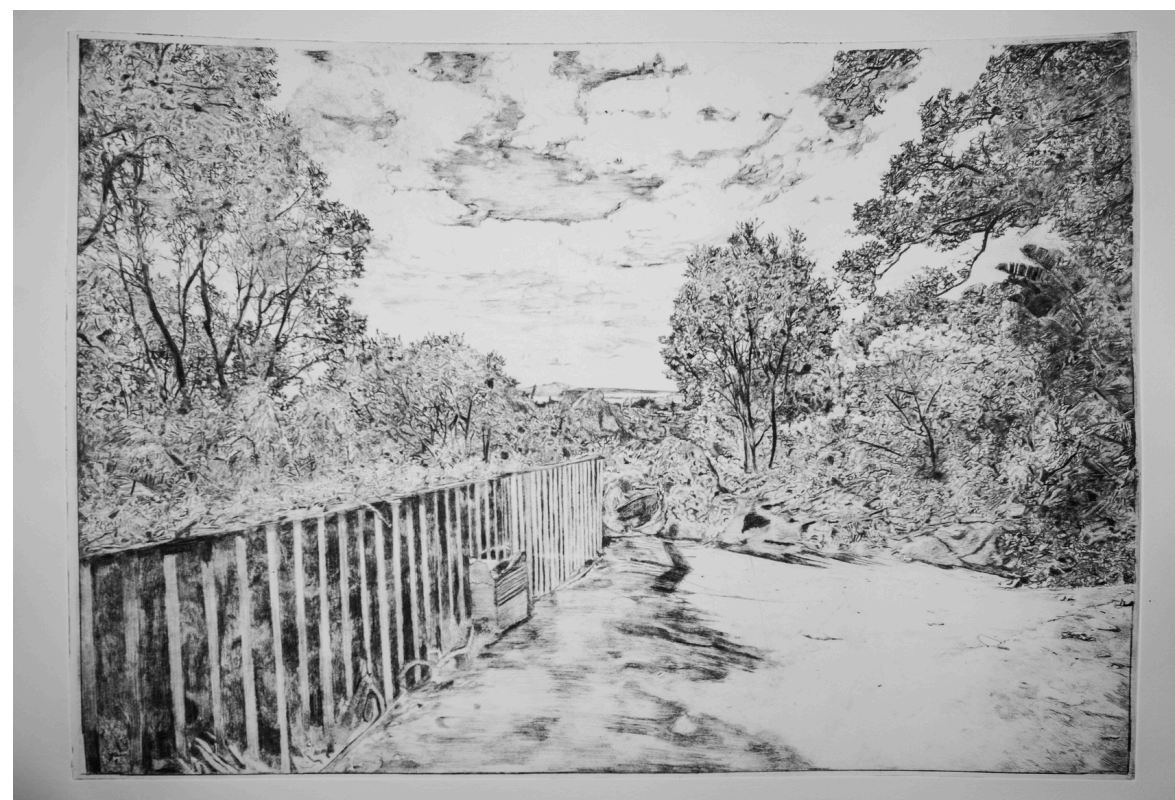
Main Prize Painting

Janet Mazenier
Mudflats



Main Prize Printmaking

James S Watson
A Quiet Place to Rest



Merit Prize Printmaking

Zara Dolan
#FBB101 – 3 SC (The Title encodes the process)



Merit Prize Painting

Meg Wilson
Barrier Dreaming



Ruth Davey Gallery

Grey Street Studio Artists
30 April - 26 May

Monday - Friday 9am-5pm
Saturday 9am-4pm
Sunday 10am-3pm

artspost
galleries

In February this year the artists who worked from Sandz Studio in Kent St. moved to new premises at 718 Grey St. in Hamilton East. The Frankton studio was established in the early 2000's by Idea Services (IHC) as a vocational art base for people with intellectual disabilities. The search for a smaller studio space more suited to the lower numbers attending in recent years, led us to the Hamilton East site, formerly a homewares store. Situated in a four-shop complex with ample, on-site parking, this light filled space is ideal as a studio with a small gallery space included which is also available for community artists to display their works. This busy neighbourhood brings many visitors to check out our new studio, meet our artists and sometimes purchase one of the amazing works on exhibition. We are all enjoying being part of this local community.

Grey St. Studio Artists
present



Next Chapter
30 April - 26 May

artspost

exhibitions

NZPPA 2024 - Artist Talks

Below are some images of the artist talks that were held over 2 Saturdays during the exhibition. These were a lovely addition to this years exhibition.



Steve Lovett



Hollie Tawhiao



Allison Murray



Caroline Peacocke



Nicol Sanders-O'Shea



Erin-Monique O'Brien



Michele Rumney

artspost

Retail space

We are constantly adding to and sourcing items for our retail area, so make sure you stop by from time to time to see what new and fabulous NZ made items we have on offer. As you can see below there is a wide variety of items to purchase. Many are at affordable prices. Support local and nz artistans who put so much care and effort into their work.



TERM TWO - 8 weeks

Enrol Online
wsa.org.nz

	MONDAY	TUESDAY	WEDNESDAY	THURSDAY	FRIDAY	SATURDAY
	29th April to 24th June No classes 3rd June - King's Birthday	30th April to 18th June	1st May to 19th June	2nd May to 20th June	3rd May to 21st June	4th May to 29th June No classes 1st June - King's Birthday Weekend
MORNING			Watercolour Continuers Paulette Bruns Studio 1 9.30am-11.30am \$245, members \$205	Open 'Drop In' Untutored Art Class Studio 1 10am-12pm \$15 per person, per session		
MORNING	Untutored Painting Studio 2 9.30am-11.30am \$135, members \$95	Watercolour Continuers Haydn Rive Studio 2 9.30am-11.30am \$245, members \$205	Painting & Drawing Techniques Nici Peacock Studio 2 9.30am-12pm \$270, members \$230	Painting & Drawing Techniques Dale Gilmore Studio 2 9.30am-11.30am \$245, members \$205	Untutored Watercolour Studio 2 9.30am-11.30am \$135, members \$95	Art Explorers 10-13 years Gemma Reid Studio 2 9.30am-11am \$160 (All materials inc)
MORNING	Watercolour Continuers Sue Burnett Print room 9.30am-12pm \$270, members \$230	Untutored Woodcuts Print room 9.30am-12pm \$155, members \$115		Intaglio Printmaking Tutored Steph McLellan Print room 9.30am-12pm \$280, members \$240 combined with Untutored Printmaking \$155, members \$115		Art Skills 5-9 year olds Anya Gladstone-Gallagher Studio 3 9.30am-11am \$160 (All materials inc)
AFTERNOON	Watercolour Continuers & Beginners Sue Burnett Print room 1pm-3pm \$245, members \$205	Relief Printmaking Renee Marjolein Print room 12.30pm-2.30pm \$245, members \$205				
WSA Office is located in artspost galleries & shop Monday-Friday 9am-5pm Saturday 9am-4pm Sunday 10am-3pm						Shop now. Pay later. Always interest-free. afterpay

TERM TWO - 8 weeks

Enrol Online
wsa.org.nz

	MONDAY	TUESDAY	WEDNESDAY	THURSDAY	FRIDAY	SATURDAY
	29th April to 24th June No classes 3rd June - King's Birthday	30th April to 18th June	1st May to 19th June	2nd May to 20th June	3rd May to 21st June	4th May to 29th June No classes 1st June - King's Birthday Weekend
AFTERNOON	Art Skills 5-9 year olds Paulette Bruns Studio 1 4pm-5.30pm \$160 (Materials Inc)	Art Skills 5-9 year olds Josie Ward Studio 1 4pm-5.30pm \$160 (Materials Inc)	Art Skills 10-12 year olds Paulette Bruns Studio 1 4pm-5.30pm \$160 (Materials Inc)	Art Skills 5-9 year olds Paulette Bruns Studio 1 4pm-5.30pm \$160 (Materials Inc)	Art Skills 5-9 year olds Josie Ward Studio 1 4pm-5.30pm \$160 (Materials Inc)	
AFTERNOON	Art 10-15 year olds Vivien Hendy Studio 2 4pm-5.30pm \$160 (Materials Inc)	Exploring Art Techniques 8-13 years Vivien Hendy Studio 2 4pm-5.30pm \$160 (Materials Inc)	Art 13-18 year olds Ellie Lee-Duncan Studio 2 4pm-6pm \$175 (Materials Inc)	Exploring Art Techniques 8-13 years Vivien Hendy Studio 2 4pm-5.30pm \$160 (Materials Inc)	Art Explorers 10-13 years Gemma Reid Studio 2 4pm-5.30pm \$160 (Materials Inc)	
AFTERNOON & EVENING	Learn Photography - Move from Auto to Manual Dean Black Studio 1 6pm-8pm \$220, member \$180 Starts 27th May	Art & Illustration 10-12 year olds Rhiannon Jackson Studio 3 4pm-5.30pm \$160 (Materials Inc)	Art Skills 5-9 year olds Josie Ward Studio 3 4pm-5.30pm \$160 (Materials Inc)	Art & Illustration 10-12 year olds Sylvia Sinel Studio 3 4pm-5.30pm \$160 (Materials Inc)		
EVENING	Oil Painting Dale Gilmore Studio 2 6pm-8pm \$245, member \$205	Creative Writing 12-17 years Anya Gladstone-Gallagher Library 5.30pm-7pm \$160		Oil Painting Dale Gilmore Studio 3 6pm-8pm \$245, member \$205	Untutored Life Drawing 6pm-8pm Monthly (Check wsa.org.nz for details)	
EVENING	Monthly Intro into Gouache Kate Symmans Studio 3 May 6pm-8pm \$150, member \$130 Starts 13th		Exciting Etching - Tutored Steph McLellan Print room 5.30pm-8pm \$280, members \$240 combined with	Contemporary Watercolour Kate Symmans Studio 1 6.15pm-8.15pm \$275, member \$235		
EVENING	Experimental Printmaking Caroline Peacocke Print room 5.45pm-8.15pm \$280, members \$240		Exciting Etching - Untutored 5.30pm-8pm \$155, members \$115	Figure Drawing - 4 weeks Gemma Reid Studio 2 6.30-8.30pm \$160, members \$120 followed by Life Drawing - 4 weeks 6.30pm-8.30pm \$160, members \$120 30th May		

Printopia 2024

3-5 May 2024

Corban Estate Arts Centre, West Auckland

6pm-9pm on Friday,

10am-3pm on Saturday and Sunday



Be sure to visit the WSA stand in the Print Fair at this year's Printopia. We'll be in the vendor's hall with about 40 other groups and individuals. Beginning with an awards night on Friday, there's a full weekend of inspiring free talks and demos and specialist half-day workshops.

Come meet awesome printmakers from across the country and shop for prints, materials and equipment.

If you want to help out with the stand on part of Saturday or Sunday, please email Janice at jmeadows51@gmail.com with the subject line: "WSA at Printopia".

Meanwhile, check out their website for more info on talks and demos and to register for workshops: <https://printopia.nz>

WAIPRINT 2024

18 July - 19 August, artspost

As usual for this annual exhibition, WSA printmakers can contribute two framed works completed within the past 18 months. Participating artists can also bring in unframed work for the print bins; the unframed works sold really well at last year's WAIPRINT in blue gallery. Look for the 2024 entry form with the June newsletter. Submission date will be mid July.

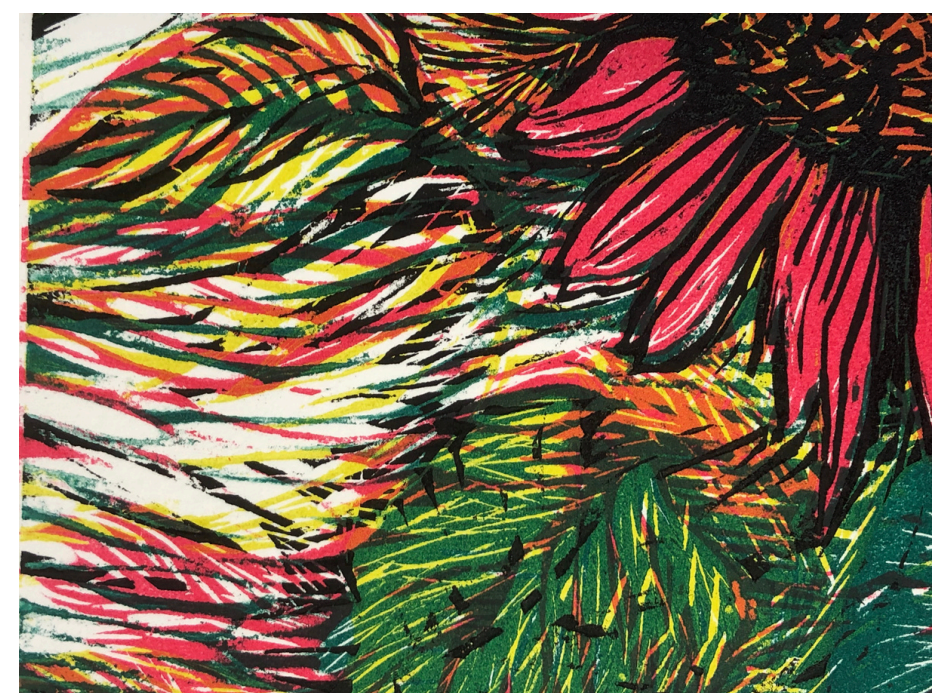


image by Heather McLean

Our guest artist this year is Heather McLean, who is known for her beautiful woodcuts. Her theme will be 'Flora' and we can expect engaging colour, texture and rich surfaces. A peek at Heather's Instagram account shows she's hard at work on her exhibition: [@heathermcleanprintmaker](https://www.instagram.com/heathermcleanprintmaker)

A trained printmaker and educator, Heather will be taking a workshop to share her techniques for creating mesmerizing multi-block prints. We don't have dates or costs yet, but if you're interested in the workshop please email Julie at Julie@wsa.org.nz with subject line 'WAIPRINT workshop'.

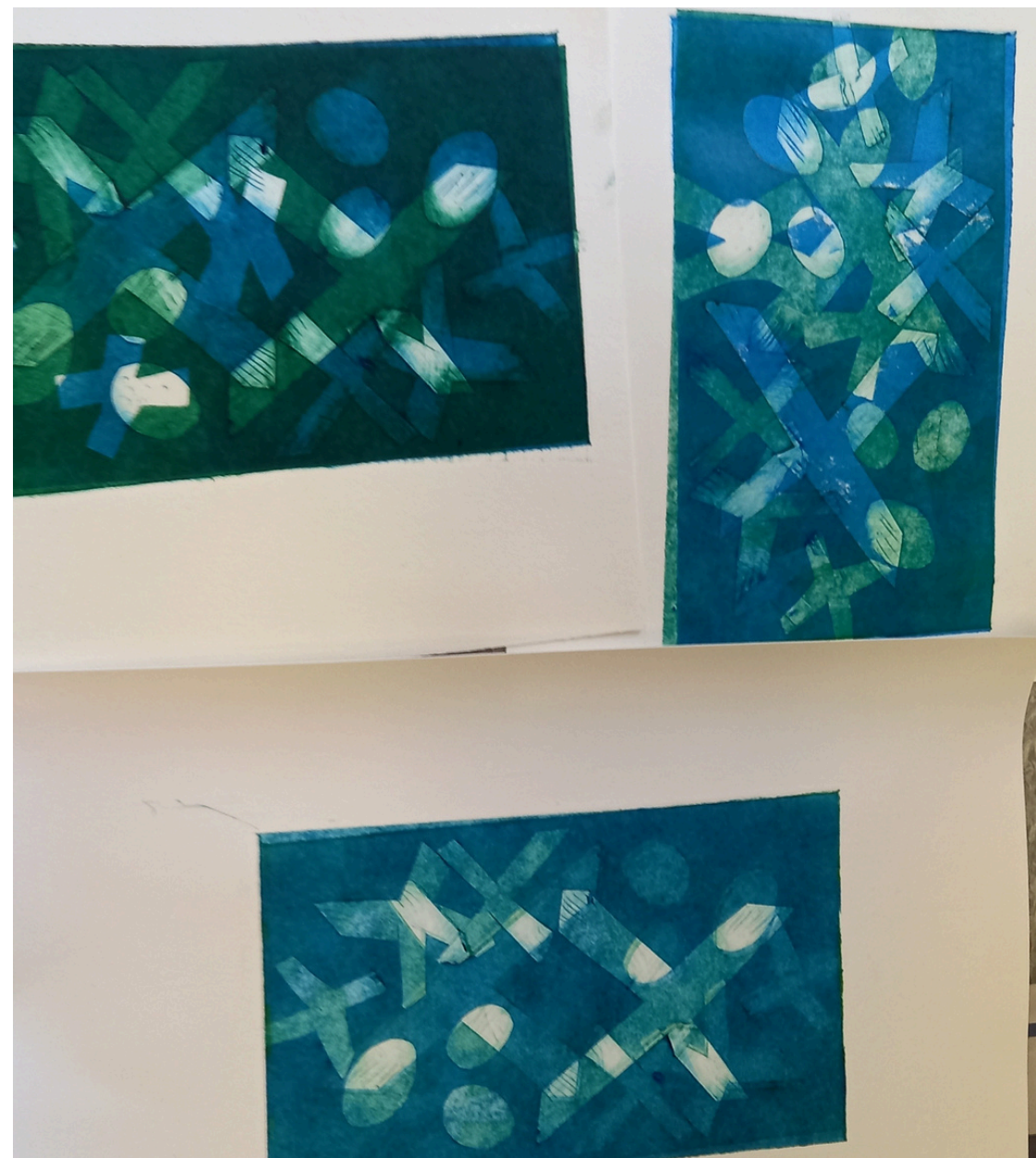
Raffle

Congratulations to Alf Kennedy of Raglan, who won the Ruth Davey print raffle. His lucky ticket was drawn by one of the judges at the opening of the NZPPA.



Play Day in the Print Room

On the last Friday of the holidays, some printmakers from Steph McLellan's intaglio classes got together for a collagraph play day. Collagraphs are prints made from bits and bobs stuck onto a backing and then sealed with shellac. (The technique takes its name from collage.) The plates can be printed intaglio – where the ink is squigged into all the crevices – or relief – where ink is rolled over just the surface. Here's some pictures of the materials used in making the plates and a few of the results. Having a play were Steph, Sue, Vicki, Tania, Caroline, Donna and Maree.





National Youth Art Award 2024

26 July - 18 August

The National Youth Art Awards 2024 exhibition will be held at artspost galleries, 120 Victoria Street, Hamilton.

All artists are encouraged to enter from ages 13 years to 25 years in 3 age categories. 13-14, 15-19 and 20-25 years.

This years judges: Ahsin Ahsin & Tamsin Green



Ahsin Ahsin is an artist from the islands of Aitu and Aitutaki. He has completed major mural works as part of Boon street-art festival and Street Prints Mauao. Ahsin has exhibited largely throughout Aotearoa in Kirikiriroa, Auckland and Melbourne. He has an extensive list of commission work and has participated in international art initiatives including a series in India & Belgium.

I whānau mai au i Ahitereiria, ki te whenua o te tangata Gadigal. He uri tēnei no Aerani, no Itaria, no Ingarani, no Kōtirangi hoki. E noho ana au i Kirikiriroa inānei. He kaiako ahua ki Wintec He kaiwhakahaere toi ki Ramp Gallery Ko Tamsin Green tōku ingoa. I am originally from Australia, where I lectured in fine art and ran a contemporary gallery. I spent four years in Brooklyn, New York before moving to the Waikato to be close to whānau. I currently teach in the School of Media Arts at Wintec and run Ramp Gallery.



I whānau mai au i Ahitereiria, ki te whenua o te tangata Gadigal.
He uri tēnei no Aerani, no Itaria, no Ingarani, no Kōtirangi hoki.
E noho ana au i Kirikiriroa inānei.
He kaiako ahua ki Wintec
He kaiwhakahaere toi ki Ramp Gallery
Ko Tamsin Green tōku ingoa

I am originally from Australia, where I lectured in fine art and ran a contemporary gallery. I spent four years in Brooklyn, New York before moving to the Waikato to be close to whānau. I currently teach in the School of Media Arts at Wintec and run Ramp Gallery.

Entries close 17 June 2024

Artists notified 25 June 2024
(finalists and non-finalists)

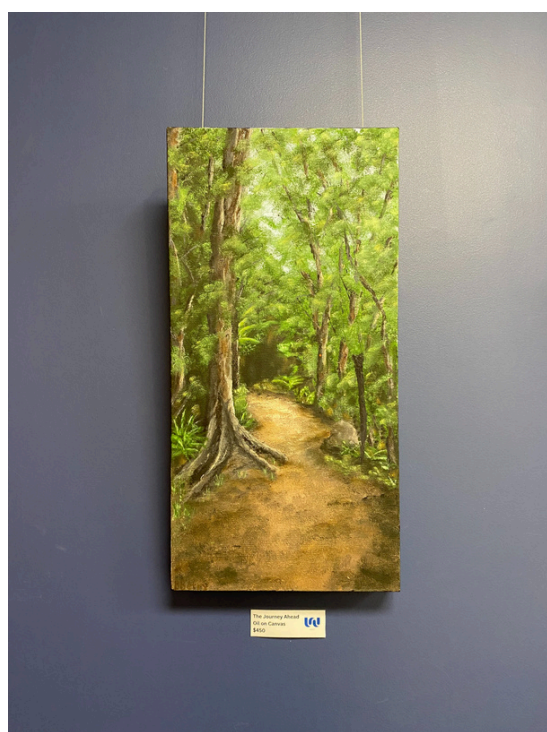
Awards and Opening night
Friday, 26 July 2024 at 5.30pm

Mavis & Co Rototuna Exhibition

Pat Berry

5th April - 7 May

Dont miss the last few days to view Pat Berry's exhibition at Mavis and Co Rototuna. Following a number of years pursuing a career and being involved with family interests, Pat is now following a long standing interest in oil painting. Primarily, his paintings are oil on canvas, a medium he enjoys working with and exploring. He paints places and portrays experiences that have impacted his life in some way. A number of his paintings are about out of the ways places he has visited and experiences he has had while tramping, travelling or fishing.



Maria Spanbroek

7 May - 10 June

Maria, Waikato born and bred, is an expressive illustrator and uses watercolour in a "painterly/loose style". Her art, described as emotive and endearing, includes a diversity of subjects from everyday objects, outdoor painting to figure drawing and closest to her heart - animals. Maria sensitive to her surroundings and inspirations, relies on feeling rather than detail, getting lost in the flow during her creative process often amazed herself at the different perspectives and interesting personality that appears on her page. Whilst various pieces are painted with bold, colourful brushstrokes, others portray a story with simplistic linework. Maria shares her art for creative conversation, connection and visual variety.

MAVIS AND CO
café • bar • bistro

Rototuna Shopping Centre
2/44 Horsham Downs Road



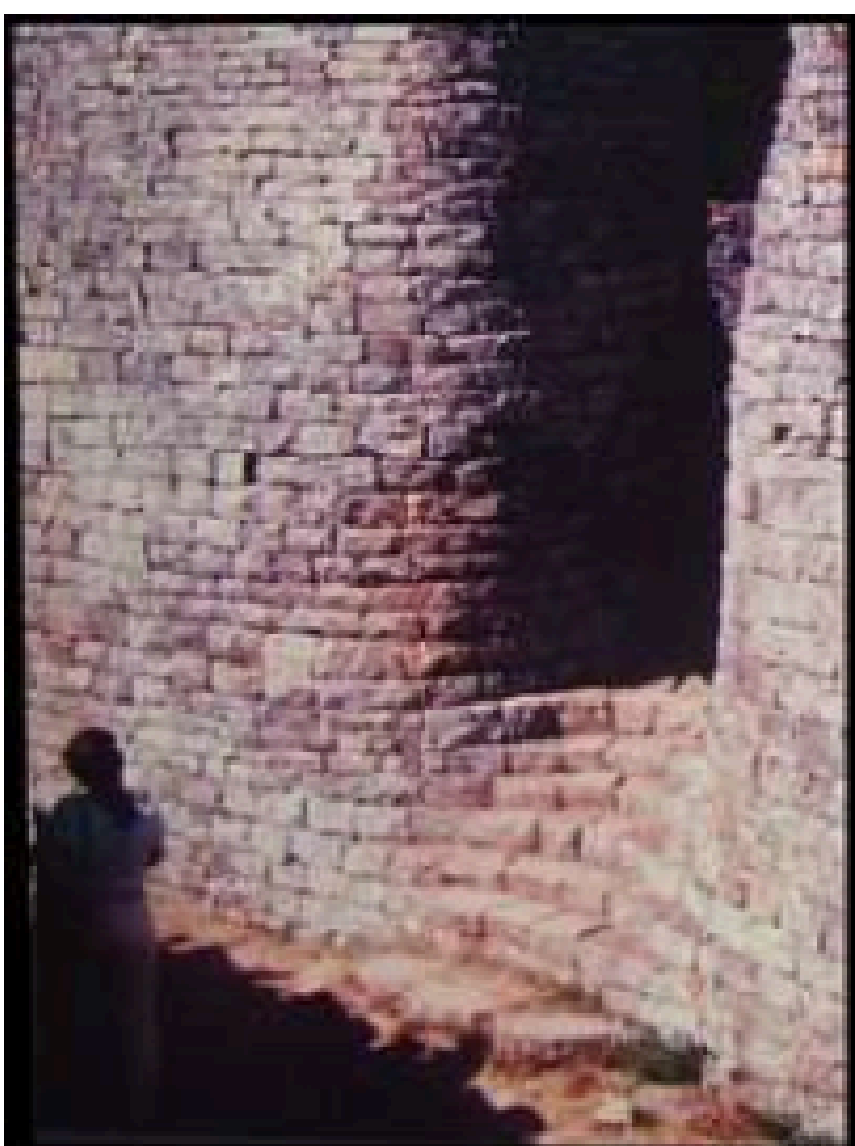
Impressions of Africa by Haydn (8)

Zimbabwe Ruins...

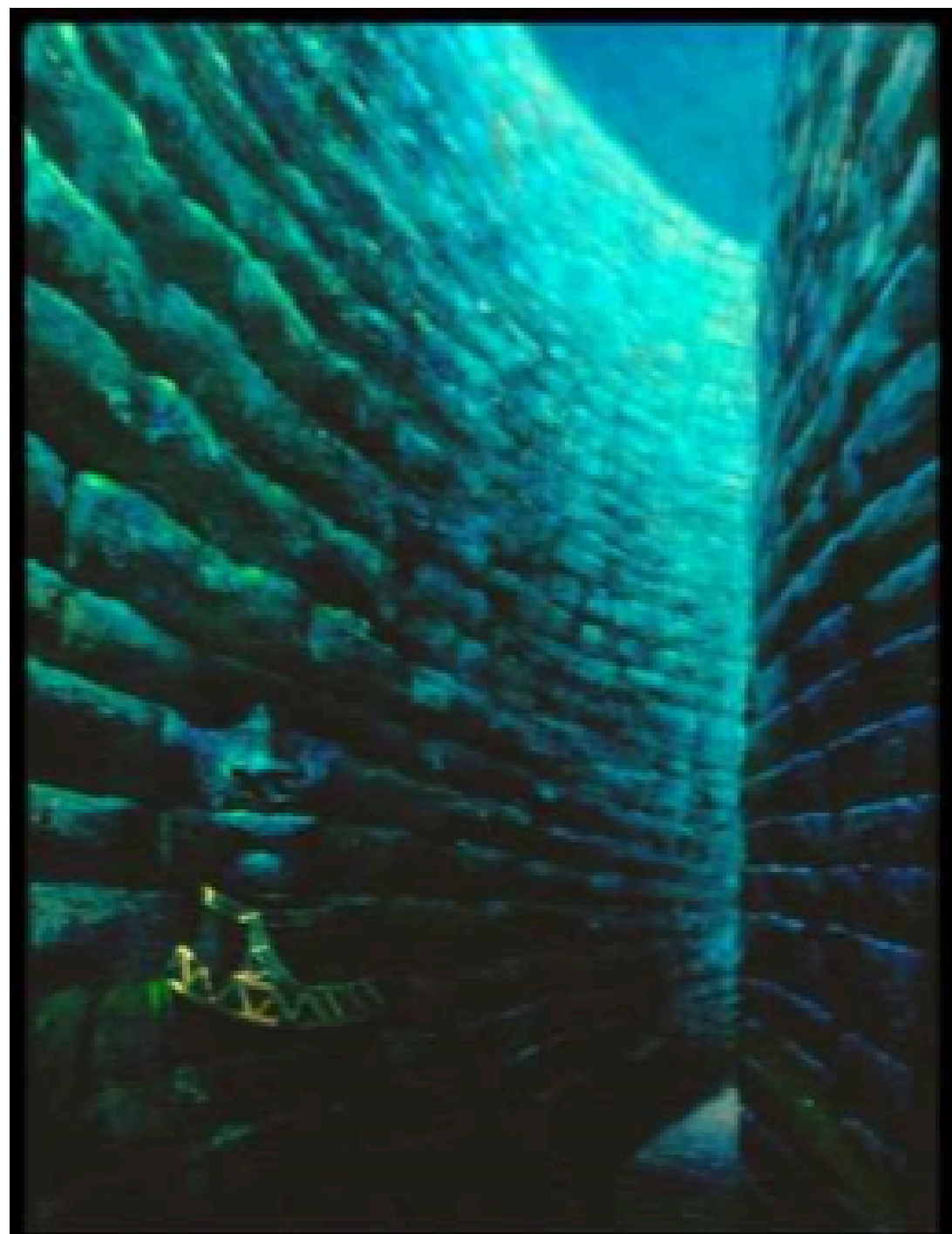
I was able to fly in a little plane to visit the actual Zimbabwe Ruins. Created by some long gone civilization who knew the unknown art of hand cutting stone blocks of all different sizes which fitted together so finely like a jigsaw! This was amazing when you saw the sizw of the structure. There was also a solid cone tower whose purpose remains a mystery.



Oil on board "The Light of Zimbabwe"



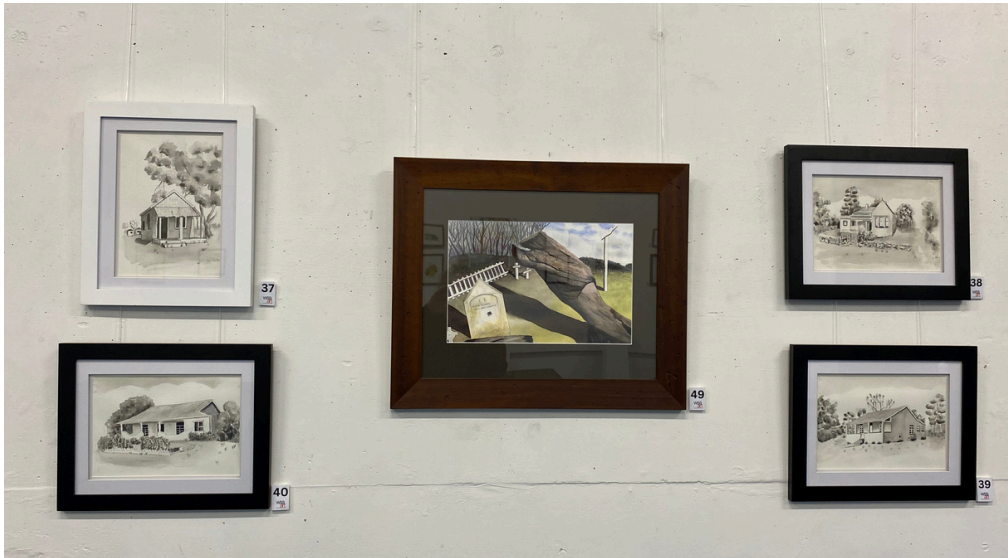
right "The Ghost of Zimbabwe"



blue Gallery

‘Converging Journeys’

Our last exhibition at blue gallery was ‘Converging Journeys’ was a group exhibition by Li-Swan Lim, Jeanette Shennan, Kim McEvilly & Emily Anne Eales. There was a lovely selection of watercolours exhibited as well as pottery.



blue



The stupid moment when you have your pill bottle in front of you but you can't remember if you already took it or not.



Funnies

A NEW STUDY SHOWS THAT PEOPLE WHO HAVE A RIDICULOUS AMOUNT OF ART & CRAFT SUPPLIES LIVE LONGER THAN THOSE WHO POINT IT OUT.



Calendar of Events and Exhibitions

MAY						
SUN	MON	TUE	WED	THU	FRI	SAT
	29 APRIL Term 2 Classes Start this week	30 APRIL Grey St. Studios Artists Exhibition Starts - artspost	1	2	3	4
5 Grey St. Studios Artists Exhibition Opening 1-2pm artspost	6	7 Pat Berry Exhibition at Mavis & Co Rototuna ends Maria Spanbroek Exhibition at Mavis & Co Rototuna starts	8	9	10	11 Joan Fear Exhibition at artspost starts
12	13	14	15	16	17	18
19	20	21	22	23	24	25
26	27	28 Caroline Peacocke Exhibition at artspost starts	29	30	31	

JUNE

Future Dates: • Term 2 Ends from 18th June - 1st July • July School Holidays start Monday 8th July • Term 3 Starts from Monday 22nd July • NYAA Exhibition 26 July - 18 August						1 NO CLASSES King's Birthday Weekend
2	3 NO CLASSES King's Birthday artspost closed	4	5	6	7	8
9 Joan Fear Exhibition at artspost ends	10 Small Stories Exhibition - Helen Perrott and Susan St. Lawrence	11	12	13 3 Exhibitions start at artspost • WSA Monday Group • Gaye Jurisich • Children's Exhibition	14	15
16	17 NYAA Entries Close	18	19	20	21	22
23	24	25 NYAA Artists Notified - Finalists & non-finalists	26	27	28 Matariki Public Holiday WSA & artspost Closed	29 30

Sponsors

We would like to thank our sponsors for their support of the WSA.





A very special thanks to SHARP, who
continue to help us substantially with
printing.

SHARP

Be Original.

NEWSLETTER ADVERTISING

Whether you're a member or not, we are excited to hear about your art-related adventures, exhibition reviews or travels, accompanied by your own photos. These will be reviewed by the WSA and included if we have space and they do not conflict with our operations. The Executives decision is final. Please contact us at wsa@wsa.org.nz

WSA OFFICE AND ART SCHOOL

120 Victoria Street (Located in artspost gallery & shop)
PO Box 1018, Hamilton 3204
07 839 4481

Office Hours:

Mon-Fri 9am-5pm
Sat 9am-4pm
Sun 10am-3pm

(these may vary, please check in advance)

artschool@wsa.org.nz for art school enquiries (Paulette)

artconnect@wsa.org.nz for art connect enquiries
wsa@wsa.org.nz for all WSA enquiries (Julie)

Website: www.wsa.org.nz

(Paulette works in the office 22 hours per week, if you need a faster reply please include Julie's email)

WSA EXECUTIVE COMMITTEE

Patron: Nancy Caiger

Treasurer & Chair: Rachael Hayton
Committee: Michelle O'Brien
Melany Sutherland
Holly Tawhiao

Hon. Solicitor: Charlotte Isaac
Hon. Secretary: Julie Johnstone