



ART CONNECTIONS

Welcome to the WSA March 2024 Newsletter

WSA will have our final exhibition at blue and will be closing on 27 April 2024. PAUA Architects have decided to lease this space to a commercial client. We have been fortunate to have this area so generously provided by Antanas and his team for a minimal monthly amount. During this period, we have had 18 exhibitions and many artists and members of the public through to enjoy this opportunity. This has meant that we have reshuffled exhibitions that were booked in for the rest of 2024 and we are grateful how generous these artists have been to adapt and change their dates to mostly be in the artspost galleries. As part of our move back into the artspost galleries we have kept the commission for artists who are Hamilton ratepayers to 25% plus GST and are extending this to our WSA members. We are also introducing a Gold card discount of 20% for any first time art students to the WSA who are not already members. All that is needed is to provide your gold card at the office when you enrol, so please let any over 65-year-olds and over, who you think would benefit from coming to an art class, know.

As a not-for-profit group we have taken on a huge commitment by being back in the artspost level where the galleries and retail space is and with this comes greater operational costs. If you would like to volunteer, we are always looking for people with particular skills, including maintaining our extensive art library on level 1. If you feel you have the passion to be on our WSA Executive please contact Julie or Rachael, our Chair through the WSA office. This mainly involves a 1–2-hour meeting per month, which is not a lot but can mean so much towards our governance and operations by having the right people who have specific skills and are proactive about the arts and the creative community.

A special thank you to Stuart Bridson who hung the Our Place exhibition in three of the artspost galleries at no cost to the WSA. This is incredibly generous, and we are very grateful for all of Stu's time. Stu's work along with the other artists exhibiting at artspost form part of the inaugural Boon Sculpture Trail where their larger works are outdoors around the CBD. Make sure to pick up a catalogue, with a map enclosed so you can take in these sculptures and find out more about the artists.

Thank you to all the artists from around Aotearoa who entered the 2024 NZPPA. Entries are now closed, and we look forward to announcing the finalists once our Judges, Kura Te Waru-Rewiri and Marian Maguire have gone through the big task of choosing these from the large number of entries received.

continued on page 2

continued from page 1

The awards will be held on 12 April at 5.30pm at artspost galleries. Thank you to our generous sponsors who continue to provide prize money to this award, now in its 24th year. This could not happen without their recognition of the arts and the importance of artists in our everyday lives and their practices. It takes a great team of members, sponsors and artists to keep the WSA going, and your support is always appreciated. If you would like to be a sponsor towards the NZPPA or the National Youth Art Awards then please contact us on wsa@wsa.org.nz or if you would like to be anonymous we have a Koha page on our website that you can donate to at any time.

Come and celebrate the artists and a new leaf in the WSA history of being back at artspost which we initially began in 1998, by attending the awards and exhibition.

The National Youth Art Awards open on March the 6th. This national award is in its 14th year and acknowledges our youth from 13 to 25 years of age. If you know of any young artists who should enter or any schools that encourage art then please let them know to visit was.org.nz and find out more about the categories and prizes. This can lead to an exciting start for their art practice and is a nurturing environment with so much to learn from the experience.

Julie - Operations Manager

artspost
galleries

Finalists Announced

Tuesday 5th March

Opening Event & Awards Presentation

Friday 12th April 5.30pm-7pm

Judges Talk

Saturday 13th April 10.30am

Exhibition runs daily until Sunday 5th May. Be sure to mark these dates on your calendar.

Monday - Friday 9am-5pm

Saturday 9am-4pm

Sunday 10am-3pm



artspost

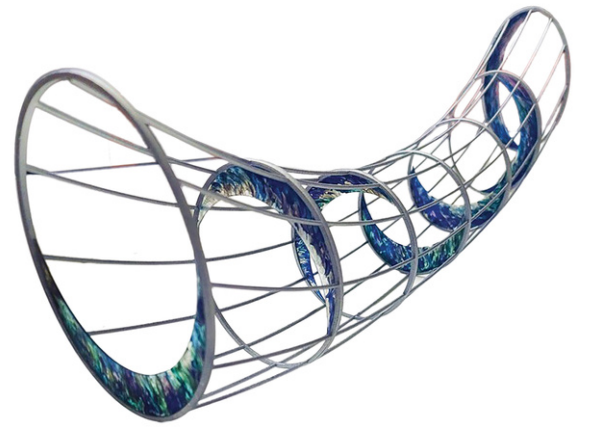
exhibitions

Boon Sculpture Trail - Small Sculpture Exhibition

3rd February - 31st March

This summer 26 artists from around Aotearoa have transformed the urban environment and green spaces of central Kirikiriroa with 23 sculptures. Prepare to be surprised, excited and awed as you wander the trail.

We are sure you will enjoy the trail and don't miss the accompanying indoor exhibition at artspost where there are smaller works. These are also for sale and available for immediate collection.



7th March - 4th April



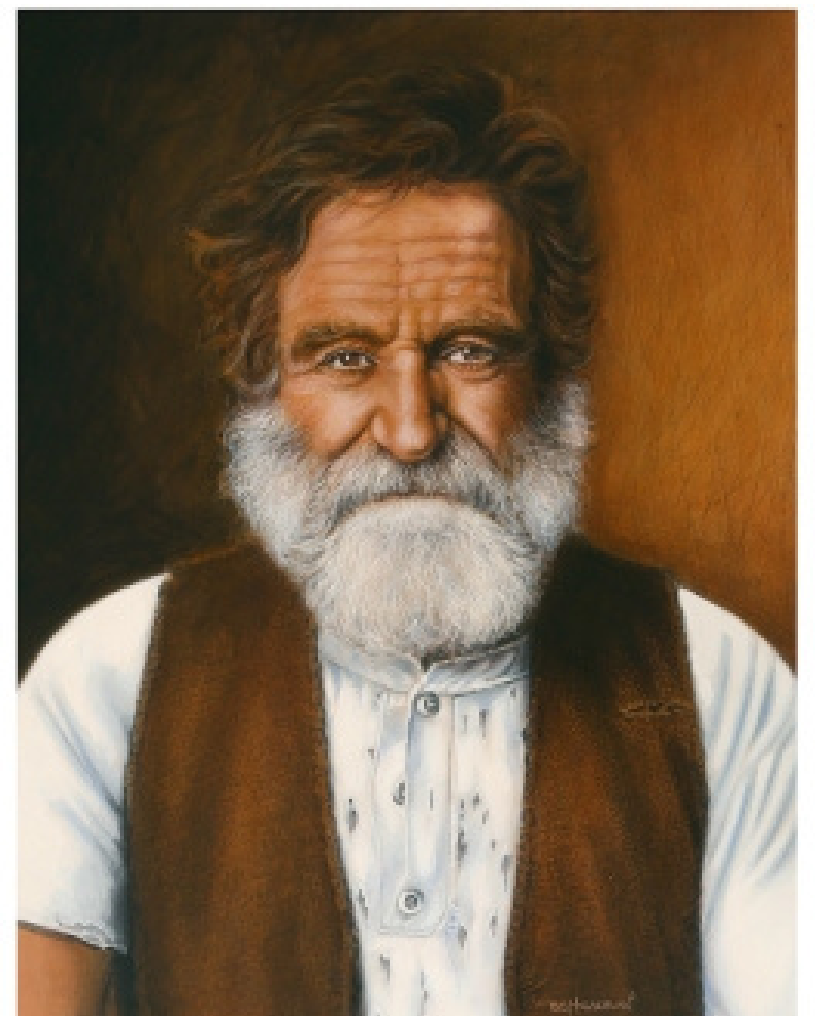
Artist Bruce McLachlan

Bruce McLachlan's passion for art began at a young age. Born and bred in the Waikato, Bruce didn't begin his formal career until 2003, upon the death of his mother.

It is his technical skill and diversity that has gained him recognition. While one canvas can depict the rolling waves of a New Zealand beach, the next a photorealistic portrait of a rock and roll legend, each a colourful addition to this artist's extensive and diverse portfolio.

Bruce is always exploring new techniques and mediums; however it is the precision and detail he accomplishes with acrylic paint that he is best known for, this is especially evident in his portraiture work.

Bruce draws much of his inspiration from the relationships he develops throughout his life, whether it is one on his children or a complete stranger, he is captivated by each person's unique character and expression.



Destruction of Artwork in Hamilton

A review of Boon Arts Summer Festival of Sculpture by Barbara Wheeler

1 March 2024

In Hamilton the recent burning of a public artwork about climate change amplifies its message in ways that no media marketing could have achieved.

Boon Arts tried a new idea this summer: multiple sculptures activating public spaces in the city for 2 months. Word spread far and wide. People in Whanganui are talking about what Hamilton is doing and on a Wednesday evening in Hamilton more than 20 people lined up to walk for 2 hours with a trained guide to see the artworks. The launch on 3 February attracted visitors to the city from throughout the motu.

Amongst all the good news swirling around this bold exhibition is the rising number of vandalised sculptures. The latest victim is Move Me by Australian artist, Barbara Wheeler.

This is a work made of locally foraged natural fibres woven onto a steel frame. Its egg shape is reminiscent of the globe and its woven elements interpret aspects of the region – the rich earth, the mighty Waikato River and the plants and flowers that the earth and the waters bring forth. One of this work's gifts is in the name. By inviting people to push the work, to find its tipping point, the artist playfully communicated the fragility of the planet and our role in climate change. Its message of 'work with me' or power 'with' was way too subtle for some Hamiltonians.

On 28 February the work was torched and destroyed. On 29 February the work was removed from exhibition. The irony of burning this artwork is that this attitude to the planet is exactly what the artist wanted to draw attention to. Torching a sculpture that represents the planet and the precarious state of the climate, speaks directly to the history of land seizure, burning native forests, pollution of land and waters for profit. Power over. A collective, accumulated assault on Papatuanuku. A pattern of land use in Aotearoa.

Bernadette Casey, a clean tech executive who travelled to Hamilton for the launch commented, 'Move Me' was an invitation to treat a symbolic work with respect. This act of destruction reflects humanity's current disregard for the planet that sustains us, demonstrating the stupidity and recklessness that is being perpetrated on a global scale.'

Others have commented that the fibre work was too vulnerable to the elements to be on show for 8 weeks. Flax, willow and steel are some of the hardest basketry elements that have been utilised in English gardens for centuries. Yes, natural materials deteriorate over time. Usually it takes longer than the 3 weeks this work was on show. A determined effort was made to annihilate the work and flaming it was the ideal strategy.

The impact on the artist is significant. Firstly, all art emerges from the heart and mind of the maker. The work's annihilation hit home emotionally – hard. Secondly, it means a loss of potential income and diminished profile for the artist. You see Ms Wheeler travelled from Melbourne to Hamilton to make the work. Generous Hamiltonians helped her source flax and willow, and she foraged in the Hamilton Gardens for fallen flowers. Weaving the work took 8 weeks over December and January when every right-thinking Hamiltonian was on holiday. Transport and the time to make the work was unpaid. It was the artist's gift to Hamilton in exchange for a show of their work. With the work's removal from exhibition, Hamilton's side of that deal reduced by half and any hope of selling or gifting the work has been eliminated.

For some onlookers, vandalism is to be expected. It's the pragmatic view.

The Hamilton brand of dynamic public art that Boon has been cultivating will not be damaged by this one act of vandalism. But it has damaged the artist and also the person who torched the work - it was a violent, destructive act. And it will inform the next lot of artists who partner with Boon to show their work. With every new venture comes new learning and broader understanding. We learn from our mistakes much more than we learn from our successes and this summer's sculpture exhibition is a crucible of learning for Boon Arts.

The Earth is our home and we are of this planet. The Earth gifts us fresh air, beautiful drinking water and soil that grows our food and fibres for clothes as well as everything we own and use. Those resources have been there for the taking and we have mindlessly done so for so long now, that changes needed to save our planetary home from climate disasters seems impossible. The destruction of Move Me speaks volumes about who we are collectively and where we have arrived as a species. Papatuanuku needs us to do better. Now.

artspost

Below are some images from the current Boon sculpture exhibition and Ruth Davey’s exhibition.



Ruth Davey ‘Letter From Home’

4 Feb - 4 Mar



WAIPRINT 2024

18 July - 19 August, artspost

Printmakers, start thinking about your submissions for WAIPRINT. We're back in artspost this year and looking forward to filling two galleries with our best efforts. Please note the dates, which have been changed since the February newsletter.

Our guest artist this year is Heather McLean, who is known for her beautiful woodcuts. Her theme will be 'Flora' and we can expect engaging colour, texture and rich surfaces.

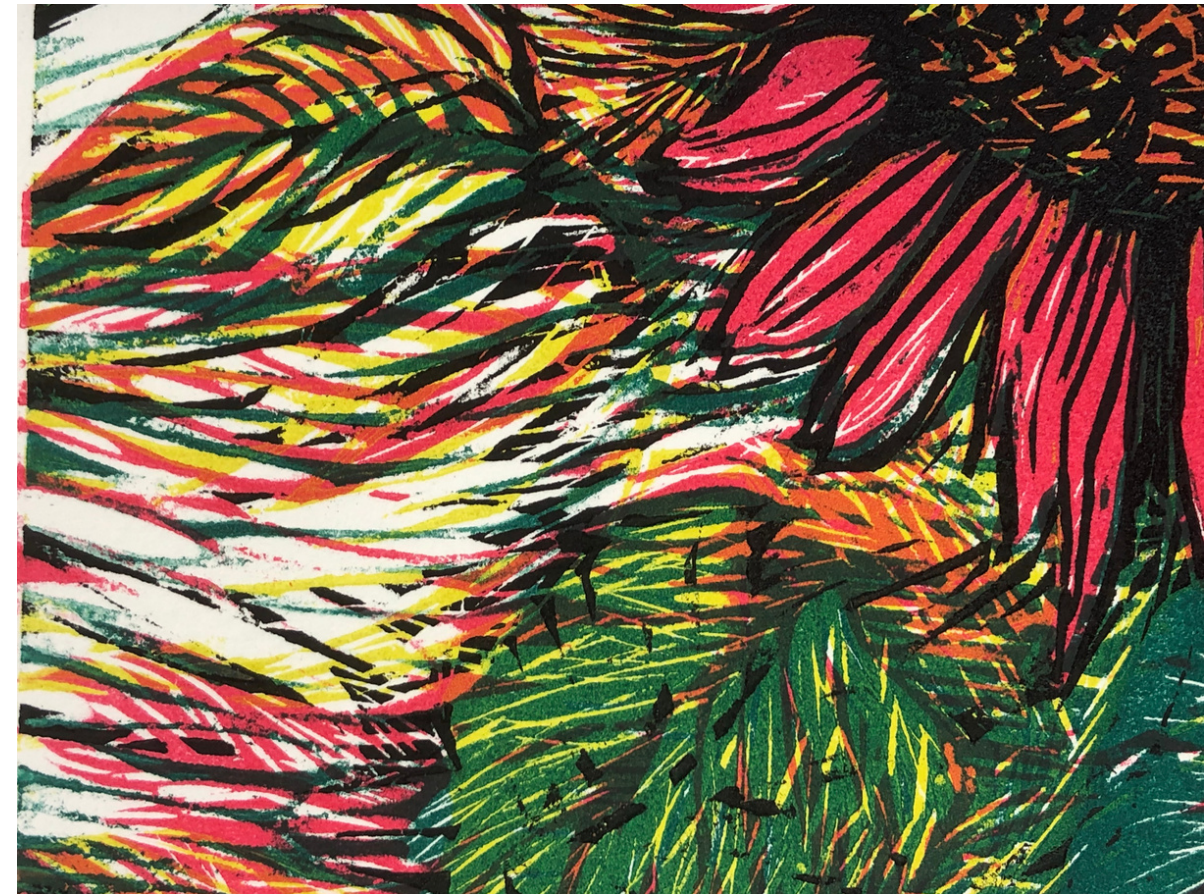


image by Heather McLean

A trained printmaker and educator, Heather will be taking a workshop to share her techniques for creating mesmerizing multi-block prints. We don't have dates or costs yet, but if you're interested in the workshop please email Julie at julie@wsa.org.nz with subject line 'WAIPRINT workshop'.

Raffle

Win this Ruth Davey original etching

in a raffle to benefit the Ruth Davey Merit in Printmaking Prize at the 2024 NZPPA. You can see this Davey print (and others) in the WSA office. downstairs in artspost. Tickets are only \$2 each or three for \$5. Winner will be drawn in April 2024.



Printopia 2024

3-5 May 2024

Corban Estate Arts Center



Don't miss this year's Printopia and experience all the fun of a big print fair. Beginning with an awards night on Friday, there's a full weekend of inspiring free talks and demos and specialist half-day workshops. Come meet awesome printmakers from across the country and shop for prints, materials and equipment in the vendors' hall.

Several of us made the trip last year and this year we've taken a stall, to raise the flag for WSA and to sell some prints. If you'd like to have some of your work included for sale, or can offer some time to help run the stall on part of Saturday or Sunday, please email Janice at jmeadows51@gmail.com with the subject line: "WSA at Printopia". Meanwhile, check out their website for more info on talks and demos and to register for workshops: <https://printopia.nz>

blue Gallery

‘Tracing Water’ by Sybille Schlumbom

17 February to 12 March

Don't miss the last days of Sybille's
stunning exhibition. Well worth the visit.

*Copy the web address below into your browser to view an
review in the latest eye contact magazine.

<https://eyecontactmagazine.com/2024/02/traces-in-kirikiroa>



‘Coastal ink Spiration’

Group exhibition by Lorraine Sabini, Caroline Peacocke & Renee Marjolein

20th March - 6th April

Opening Soiree
Saturday 23rd March 2pm-5pm

Talented printmakers Lorraine Sabini, Caroline Peacocke
and Renee Marjolein are having a joint exhibition which
will be well worth a visit.

blue



image: ‘Matata’ by Renee Marjolein

3 Anzac Parade
Hamilton

Wed - Sat
11.30am-3pm



Mavis & Co Rototuna Exhibition

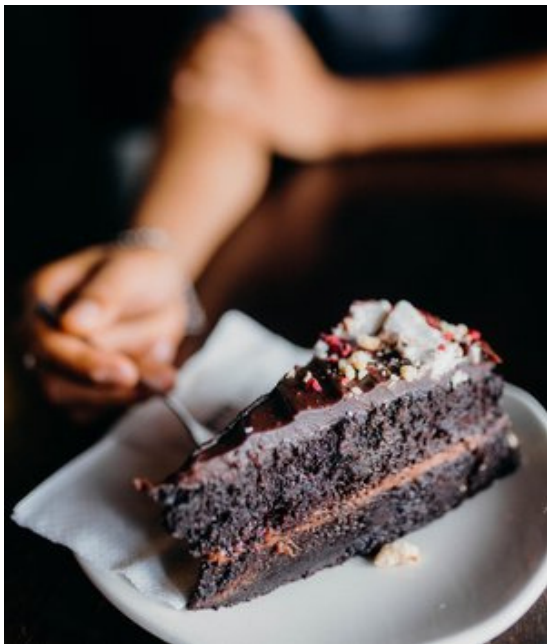
Stacey Moore
4th March - 2nd April

"Stacey Moore is a Christian abstract artist. Born and raised in Hamilton, she recently relocated to Papamoa. Colour is her inspiration and she uses art as a way to express emotions. Her aim is to create work that uplifts and brings joy."



MAVIS AND CO
café • bar • bistro

Rototuna Shopping Centre
2/44 Horsham Downs Road

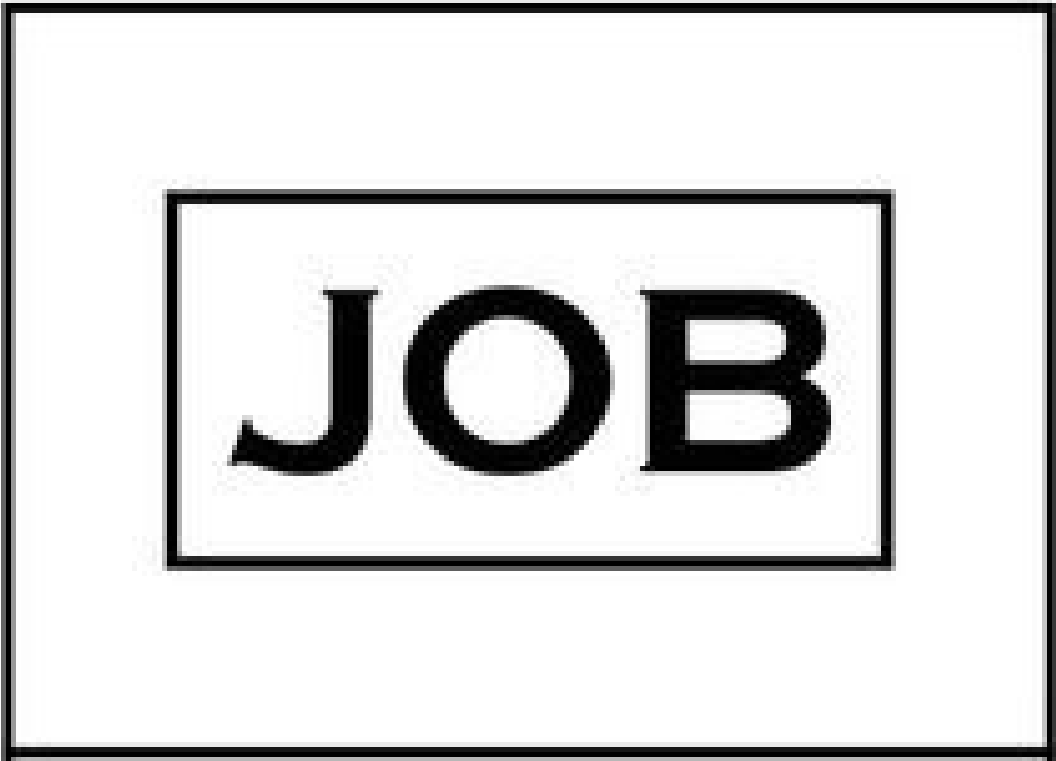


Funnies

The older I
get, the more
I understand
why roosters
just scream
to start their
day.

I told my wife
she should
embrace her
mistakes...
She hugged me.

Brain Teaser



answer on the bottom of calendar page

5-12 year olds April Art Holiday Programme

9am-12pm

We have an exciting programme of art activities on offer during the April School Holidays. From painting, watercolour, clay, collage, paper art, drawing skills and much more. Enrol for 1 morning or multiple. Our tutors are highly skilled and passionate about passing their vast knowledge of art onto youth.



Monday 15 April- Friday 26 April
(no session 25 April - Anzac Day)

\$35 per child per morning or
\$30 if attending 5 mornings or
more.

Enrol online wsa.org.nz

All Materials Provided



12-17 year olds April Sculpture & 3D Character Design Holiday Programme

Monday 15th April - Thursday 18th April.

Whether you want to sculpt a character who has human features, is a fire breathing dragon, or is a sub-Saharan lizard, the world is your oyster (& your sculpture could be too!). It doesn't necessarily have to be a character; you could sculpt any kind of object.



9am-12pm

\$219 includes
all materials

Enrol online wsa.org.nz

Exhibition

‘A Devotion To Form’
by Sylvia Sinel

Dont miss viewing this exhibition by WSA tutor and talented sculptor and artist Sylvia Sinel.



12-17 year olds April Puppet Making Holiday Programme

Monday 22nd April - Wednesday 24th April.

Do you want to literally bring your creation to life? Join our puppet making holiday programme! In this course, you will design and build a rod puppet. You will learn how to sculpt a head, create the body and garments, and most importantly, make it move! So come and unleash your creativity.

9am - 12pm

\$165 includes
all materials

Enrol online
wsa.org.nz



WSA Library

Did you know we have an extensive art library at the WSA? Over the years we have been fortunate to have been donated a huge variety of art books covering nearly every art medium, masters, art history, photography, ceramics, theory, life drawing, exhibitions and much much more. These used to be in a much smaller room upstairs, but are now in the old WSA office. Two of our members have spent several months volunteering in the library organising and colour coding all the books into specific categories. We are extremely grateful for their time. As you can see from the photos below it is a lovely space to sit and read, or just relax while waiting for art classes. Members and students can take books out for hire by taking the book downstairs to the office in artspost to record your information. *(Only during office hours - Monday -Friday 9am-5pm, Saturday 9am-4pm, Sunday 10am-3pm)*



Impressions of Africa by Haydn (7)

The Wild life..

African wild life has always attracted and excited me. So being actually there in Zimbabwe meant we could go to a nearby game reserve and see the beautiful Giraffes gliding through the savanna, or come across a leopard at close range and hear it's growl. I did many animal paintings there mostly oils as my friends all wanted something!





TERM TWO - 8 weeks

Enrol Online
wsa.org.nz

	MONDAY	TUESDAY	WEDNESDAY	THURSDAY	FRIDAY	SATURDAY
	29th April to 24th June No classes 3rd June - King's Birthday	30th April to 18th June	1st May to 19th June	2nd May to 20th June	3rd May to 21st June	4th May to 29th June No classes 1st June - King's Birthday Weekend
MORNING			Watercolour Continuers Paulette Bruns Studio 1 9.30am-11.30am \$245, members \$205	Open 'Drop In' Untutored Art Class Studio 1 10am-12pm \$15 per person, per session		
MORNING	Untutored Painting Studio 2 9.30am-11.30am \$135, members \$95	Watercolour Continuers Haydn Rive Studio 2 9.30am-11.30am \$245, members \$205	Painting & Drawing Techniques Nici Peacock Studio 2 9.30am-12pm \$270, members \$230	Painting & Drawing Techniques Dale Gilmore Studio 2 9.30am-11.30am \$245, members \$205	Untutored Watercolour Studio 2 9.30am-11.30am \$135, members \$95	Art Explorers 10-13 years Gemma Reid Studio 2 9.30am-11am \$160 (All materials inc)
MORNING	Watercolour Continuers Sue Burnett Print room 9.30am-12pm \$270, members \$230	Untutored Woodcuts Print room 9.30am-12pm \$155, members \$115		Intaglio Printmaking Tutored Steph McLellan Print room 9.30am-12pm \$280, members \$240 combined with Untutored Printmaking \$155, members \$115		Art Skills 5-9 year olds Sybille Schlumbom Studio 3 9.30am-11am \$160 (All materials inc)
AFTERNOON	Watercolour Continuers & Beginners Sue Burnett Print room 1pm-3pm \$245, members \$205	Relief Printmaking Renee Marjolein Print room 12.30pm-2.30pm \$245, members \$205				
WSA Office is located in artspost galleries & shop Monday-Friday 9am-5pm Saturday 9am-4pm Sunday 10am-3pm						Shop now, Pay later. Always interest-free. afterpay



TERM TWO - 8 weeks

Enrol Online
wsa.org.nz

	MONDAY	TUESDAY	WEDNESDAY	THURSDAY	FRIDAY	SATURDAY
	29th April to 24th June No classes 3rd June - King's Birthday	30th April to 18th June	1st May to 19th June	2nd May to 20th June	3rd May to 21st June	4th May to 29th June No classes 1st June - King's Birthday Weekend
AFTERNOON	Art Skills 5-9 year olds Paulette Bruns Studio 1 4pm-5.30pm \$160 (Materials Inc)	Art Skills 5-9 year olds Josie Ward Studio 1 4pm-5.30pm \$160 (Materials Inc)	Art Skills 10-12 year olds Paulette Bruns Studio 1 4pm-5.30pm \$160 (Materials Inc)	Art Skills 5-9 year olds Paulette Bruns Studio 1 4pm-5.30pm \$160 (Materials Inc)	Art Skills 5-9 year olds Josie Ward Studio 1 4pm-5.30pm \$160 (Materials Inc)	
AFTERNOON	Art 10-15 year olds Vivien Hendy Studio 2 4pm-5.30pm \$160 (Materials Inc)	Exploring Art Techniques 8-13 years Vivien Hendy Studio 2 4pm-5.30pm \$160 (Materials Inc)	Art 13-18 year olds Ellie Lee-Duncan Studio 2 4pm-6pm \$175 (Materials Inc)	Exploring Art Techniques 8-13 years Vivien Hendy Studio 2 4pm-5.30pm \$160 (Materials Inc)	Art Explorers 10-13 years Gemma Reid Studio 2 4pm-5.30pm \$160 (Materials Inc)	
AFTERNOON & EVENING	Learn Photography - Move from Auto to Manual Dean Black Studio 1 6pm-8pm \$220, member \$180 Starts 27th May	Art & Illustration 10-12 year olds Rhannon Jackson Studio 3 4pm-5.30pm \$160 (Materials Inc)	Art Skills 5-9 year olds Josie Ward Studio 3 4pm-5.30pm \$160 (Materials Inc)	Art & Illustration 10-12 year olds Sylvia Sinel Studio 3 4pm-5.30pm \$160 (Materials Inc)		
EVENING	Oil Painting Dale Gilmore Studio 2 6pm-8pm \$245, member \$205	Creative Writing 12-17 years Anya Gladstone-Gallagher Library 5.30pm-7pm \$160		Oil Painting Dale Gilmore Studio 3 6pm-8pm \$245, member \$205	Untutored Life Drawing 6pm-8pm Monthly (Check wsa.org.nz for details)	
EVENING	Monthly Intro into Gouache Kate Symmans Studio 3 May 6pm-8pm \$245, member \$205 Starts 13th		Exciting Etching - Tutored Steph McLellan Print room 5.30pm-8pm \$280, members \$240 combined with	Contemporary Watercolour Kate Symmans Studio 1 6.15pm-8.15pm \$275, member \$235		
EVENING	Experimental Printmaking Caroline Peacocke Print room 5.45pm-8.15pm \$280, members \$240		Exciting Etching - Untutored 5.30pm-8pm \$155, members \$115	Figure Drawing - 4 weeks Gemma Reid Studio 2 6.30-8.30pm \$160, members \$120 followed by Life Drawing - 4 weeks 6.30pm-8.30pm \$160, members \$120 30th May		

Calendar of Events and Exhibitions

MARCH						
SUN	MON	TUE	WED	THU	FRI	SAT
					1 Boon Small Sculpture Exhibition continues - artspost	2
3	4 Stacey Moore Exhbitioin at Mavis & Co Rototuna Opens	5 NZPPA Finalists Announced	6 NYAA Entries Open	7 Bruce McLachlan Exhibition Opens - artspost	8	9 ‘Tracing Water’ Exhibition by Sybille Schlumbom ends - blue gallery
10	11	12	13	14	15	16
17	18	19	20 ‘Coastal Inkspiration’ Group Exhibition Starts - blue gallery	21	22	23 ‘Coastal Inkspiration’ Group Exhibition Opening Event 2pm & Artist Talk 3pm - blue gallery
24	25	26	27	28	29 Easter - Good Friday WSA & artspost Closed	30 Boon Small Sculpture Exhibition co ends - artspost No Classes

APRIL

MARCH 31 Easter Sunday WSA & artspost Closed	1 Easter Monday WSA & artspost Closed	2	3	4	5 Stacey Moore Exhibition at Mavis & Co Rototuna Ends Pat Berry Exhibition at Mavis & Co Rototuna Starts	6 ‘Coastal Inkspiration’ Group Exhibition Ends - blue gallery
7	8	9	10 ‘Converging Journey’s’ Group Exhibition - blue gallery - Opening Event 11.30am-3pm	11	12 NZPPA Exhibition Opening & Awards 5.30pm-7pm -artspost	13 NZPPA Exhibition Judges Talk 10.30am - artspost
14	15 School Holiday Art Programmes 9am-12pm	16 School Holiday Art Programmes 9am-12pm	17 School Holiday Art Programmes 9am-12pm	18 School Holiday Art Programmes 9am-12pm	19 School Holiday Art Programmes 9am-12pm	20
21	22 School Holiday Art Programmes 9am-12pm	23 School Holiday Art Programmes 9am-12pm	24 School Holiday Art Programmes 9am-12pm	25 Anzac Day WSA & artspost Closed	26 School Holiday Art Programmes 9am-12pm	27 ‘Converging Journey’s’ Group Exhibition - blue gallery - Last day for viewing 11.30am-3pm
28	29 Term 2 Classes Start - 8 weeks	30	Future Dates: <ul style="list-style-type: none">NZPPA Exhibition Closes Sunday 5th May - artspostPat Berry Exhibition Closes Tuesday 7th May - Mavis & Co RototunaKing’s Birthday - Monday 3rd June (no classes)Term 2 Ends Monday 24th JuneMatariki Holiday - Friday 28th JuneJuly School Holidays start Monday 8th July			

Sponsors

We would like to thank our sponsors for their support of the WSA.



20% OFF STOREWIDE* SALE

*Excludes books, magazines, Pantone, Museo bars, MiScreen, custom canvas stretching, Macs Clay, printmaking presses & Giftcards. 20% discount is off our normal retail price. Sale Ends 25/03/24

In-store & Online www.gordonharris.co.nz
AUCKLAND HAMILTON WELLINGTON CHRISTCHURCH

Gordon Harris

THE ART & GRAPHIC STORE

A very special thanks to SHARP, who continue to help us substantially with printing.

SHARP

Be Original.

NEWSLETTER ADVERTISING

Whether you’re a member or not, we are excited to hear about your art-related adventures, exhibition reviews or travels, accompanied by your own photos. These will be reviewed by the WSA and included if we have space and they do not conflict with our operations. The Executives decision is final. Please contact us at wsa@wsa.org.nz

WSA OFFICE AND ART SCHOOL

120 Victoria Street (Located in ArtsPost Gallery & Shop)
PO Box 1018, Hamilton 3204
07 839 4481
Office Hours:
Mon-Fri 9am-5pm
Sat 9am-4pm
Sun 10am-3pm
(these may vary, please check in advance)

artschool@wsa.org.nz for art school enquiries (Paulette)
wsa@wsa.org.nz for all WSA enquiries (Julie)
Website: www.wsa.org.nz

(Paulette works in the office 22 hours per week, if you need a faster reply please include Julie's email)

WSA EXECUTIVE COMMITTEE

Patron:	Nancy Caiger
Treasurer & Chair:	Rachael Hayton
Committee:	Michelle O'Brien
	Melany Sutherland
	Gemma Reid
	Holly Tawhiao
Hon. Solicitor:	Charlotte Isaac
Hon. Secretary:	Julie Johnstone