



# Art Connections

WAIKATO SOCIETY OF ARTS

PO Box 1018 Hamilton 3240 [www.wsa.org.nz](http://www.wsa.org.nz)

Welcome to the June 2023 newsletter

The inaugural Small Sculpture Award being hosted by the Waikato Society of Arts has attracted sculptors from all over Aotearoa and we are excited to see the Judge's selection for the finalists exhibition being held at blue gallery on June 23rd at 5.30pm. Everyone is welcome to join us. Andrea du Chatenier is this year's Judge and she will be giving a floor talk on the Saturday after the Awards at 10.30am at blue. We are very pleased to be supported by our Main sponsor PAUA Architects who are generously sponsoring the First prize of \$5000, the Merit award prize is being kindly sponsored by Fosters Construction and the Highly Commended award of \$1000 sponsored by Rachael Hayton from CFO Partner. We have been incredibly fortunate to have this amazing sponsorship from the onset of planning this new award and look forward to celebrating the artists and thanking our sponsors on the night. Please come along and show your support for the finalists and support these local sponsors who support visual arts in Aotearoa. The exhibition will be running until July 22nd.

The NZ Painting and Printmaking Awards may be over for another year and we are always grateful for the support of all our sponsors. This year we received a special sponsorship from David Lloyd following his successful exhibition at Hanrad Rugs. Through the sales of David's exquisite works we received over \$2000 towards our operating costs of the Awards and Hanrad Rugs dropped their commission on these sales. This is an extremely generous thing for any artist to do and we hope you will support both David's work and Hanrad Rugs incredible shop and any future exhibitions they hold. Gaye Jurisich is curating our Small Sculpture Award at blue gallery and is their current exhibitor. Make sure to stop in and see these colourful works in this new creative collaboration.

Entries for the National Youth Art Awards are closing on the 18th of June, 2023 so please make sure to encourage and share this exciting opportunity for any artists of whatever level of experience, in 3 age categories, from 13 to 25 years old. Details of the award can be found on our website. This year our Opening and awards are being held at the same time as the National Contemporary Art Awards so you can make an evening of it and come and see these incredibly talented young artists exhibiting and being appreciated at the awards, before heading over to the Museum for their exhibition. As a not for profit organisation all the awards and exhibition opportunities are made possible by the generosity of our sponsors, the majority of them being local businesses. Please make sure to support them and the artists who enter our exhibitions. They are in a very tough environment and are greatly under-valued for their work, especially in this current environment. This is their careers and their income and we need to lift their work up and value their time, as currently being a visual artist has on average the lowest income in the arts. The website address below gives you more insight to the challenges creatives are facing:

<https://thebigidea.nz/stories/lowdown-creatives-income-research-paints-grim-picture>

Our term 3 classes and July school holiday programme are now available to book into. As part of our purpose we try to continually support our tutors, who are artists also, by having regular classes they tutor, so another way of supporting their incomes is to come along to a regular art class at the WSA. The tutors are highly skilled, have amazing talents and qualified with everything you need to learn a large range of mediums and skills. We have a free art library and an exhibition space where members and students exhibit in the office as a starting point to display their work. Come and have a look at what we have on sale and what other courses and services we provide.

Julie




## Entries close Sunday 18th June

## Term 3 Classes

For more information or to enrol [wsa.org.nz](http://wsa.org.nz)

Our term 3 classes start from Monday 17th July and run for 8 weeks. (Some classes will start a week or 2 later than others). If you are currently attending classes in term 2, you will be emailed on 8th June to see if you would like your place saved for term 3. You will have until 16th June to confirm. For those wanting a space in a class that is currently full, check our website after 16th June as more spaces may have opened up in some by then. Below are a selection of classes that currently have spaces available for term 3.

Our tutors are highly skilled in their chosen fields and are passionate about passing on their knowledge to you. Class numbers are kept at 8 maximum to give you a quality experience. Our studios are a lovely space to create in the winter months, with plenty of heating, light and sun.

|   |   |   |
|---|---|---|
|    | <b>Monday Evening Oil Painting</b><br>17th July-4th Sept - 8 weeks<br>\$205 WSA members, \$245 non-members                | Suitable for beginners and continuers<br><br><i>Tutored by Dale Gilmore</i>           |
| <i>Tutored by<br/>Anya Gladstone-Gallagher</i>                                      | <b>Tuesday Morning Adults Creative Writing</b><br>18th July-5th Sept - 8 weeks<br>\$185 WSA members, \$225 non-members    |   |
|  | <b>Tuesday Afternoon Relief Printmaking</b><br>18th July-5th Sept - 8 weeks<br>\$205 WSA members, \$245 non-members       | Suitable for beginners<br>& continuers<br><br><i>Tutored by Renee Marjolein</i>       |
| <i>Tutored by<br/>Deborah Cain</i>  | <b>Tuesday Afternoon 'Let's Talk: About Art'</b><br>18th July-8th August - 4 weeks<br>\$60 WSA members, \$100 non-members |  |
|  | <b>Tuesday Evening 10-14 year olds art class</b><br>18th July-5th Sept - 8 weeks<br>\$160 includes all Materials          | <i>Tutored by<br/>Rhiannon Jackson</i>  |
| <i>Tutored by<br/>Paulette Bruns</i>  | <b>Tuesday Evening Beginner Watercolour class</b><br>18th July-5th Sept - 8 weeks<br>\$205 WSA members, \$245 non-members |  |
|  | <b>Wednesday 5-9 year olds art class</b><br>19th July-6th Sept - 8 weeks<br>\$160 includes all Materials                  | <i>Tutored by<br/>Josie Ward</i>  |
| <i>Tutored by<br/>Ellie Lee-Duncan</i>  | <b>Wednesday 13-18 year old Teen art class</b><br>19th July-6th Sept - 8 weeks<br>\$160 includes all Materials            |  |

## Term 3 Classes



### Thursday Morning Drop In Untutored Art Class

20th July-7th Sept - 8 weeks

*Attend casually for  
\$15 each session*

Suitable for beginners  
and continuers

### Thursday Painting Techniques

20th July-7th Sept - 8 weeks

*Tutored by Dale Gilmore*

\$205 WSA members, \$245 non-members



### Thursday 5-9 year olds Art Class

20th July-7th Sept - 8 weeks

\$160 includes all Materials

*Tutored by  
Paulette Bruns*

Come and paint  
with other keen  
watercolourists

### Friday Untutored Watercolour Class

21st July-8th Sept - 8 weeks

\$95 WSA members, \$135 non-members



### Friday Drawing & Painting the Body

4th August-8th Sept - 6 weeks

\$165 WSA members, \$205 non-members

Suitable for beginners and continuers

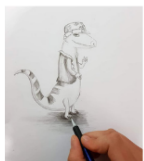
*Tutored by  
Ellie Lee-Duncan*

### Friday Art Explorers 10-13 year olds

21st July-8th Sept - 8 weeks

\$160 includes all Materials

*Tutored by  
Gemma Reid*



### Friday Art & Illustration 8-10 year olds

21st July-8th Sept - 8 weeks

\$160 includes all Materials

*Tutored by  
Rhianon Jackson*

### Saturday Morning Art Skills 5-9 years

22nd July-9th Sept - 8 weeks

\$160 includes all Materials

*Tutored by  
Emily Nicholson*



### Saturday Morning Art Explorers 10-13 years

22nd July-9th Sept - 8 weeks

\$160 includes all Materials

*Tutored by  
Gemma Reid*

### Saturday 5-9 years Art Skills

22nd July-9th Sept - 8 weeks

\$160 includes all Materials

*Tutored by  
Emily Nicholson*



**Enrol online [wsa.org.nz](http://wsa.org.nz) or email [artschool@wsa.org.nz](mailto:artschool@wsa.org.nz) for enquiries**



## Printmaking News

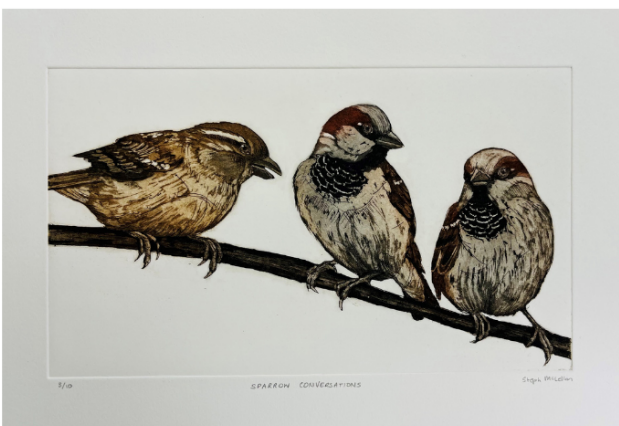
In this new section to our newsletter we will be bringing you a variety of news, information and other interesting pieces from the world of printmaking both here at the WSA and further afield. This month we feature one of our long term, highly skilled and talented tutors Steph McLellan.



I grew up predominantly in the far North with my Dad who was a secondary school mathematics and physics teacher. We spent our weekends when I wasn't doing horse events visiting galleries and artists, as my father had a passion for the creative arts. It was on one of these excursions that I met NZ screen printer Fassett Burnett in his Cable Bay studio. Straight away I was taken by the pared down landscapes and the process of printmaking.

I moved to the Waikato to attend Waikato University and Teachers College. David Fowler at the Hamilton Teachers College Art Dept got me started on drypoint prints. While in David's class we were taken to meet Ruth Davy in her home studio, and there I was inspired by her etchings. My drypoint prints caught the eye of an itinerant lecturer I had in 1990, the late Stan Boyle who invited me to come along to the WSA etching class run by Stan himself and Joan Travaglia. I attended classes from then on, totally hooked and the rest you can say is History..... I'm still a member 33 years later, and can still be found with inky fingers in the print room, however with the passing of Joan and Stan I am the one happily tutoring and encouraging others to love etching as much as I do. Although I love and dabble in all forms of print, etching is my passion and time in my studio is my happy place. We are so incredibly lucky in the Waikato to have a Society of Arts that offers so many wonderful classes to the public, and our print classes are as busy as ever. We are in a fairly unique position where we are one of the only art societies in NZ that teach traditional etching.

### Etching



Etching in its traditional pure form, is a process where a metal plate (zinc, copper, aluminum, or steel) is covered with a waxy 'ground' which is resistant to acid. The artist draws their image or design through the waxy layer with a pointed needle to expose the bare metal. The plate is then dipped into a bath of acid, and the acid 'bites' into the metal leaving a groove or lines where the artist has drawn. The plate is removed from the acid when the desired depth of line has occurred and the waxy ground is cleaned off. The image or design is clearly incised into the metal plate and can be inked up.

When the ink has been spread into all the grooves and lines the surface is wiped clean, the plate can be put through a high-pressure printing press together with a sheet of moist/softened paper. The paper picks up the ink from the etched lines and grooves making a print. The plate can be inked and printed hundreds of times. Etching has been used by fine art masters for hundreds of years, the oldest dated etching is by Albrecht Dürer in 1515. Although little has changed with the process and traditional etching is still taught around the world, there has been a move to make the process less reliant on toxic chemicals and solvents.



## Exhibition - Mavis & Co Cafe Rototuna

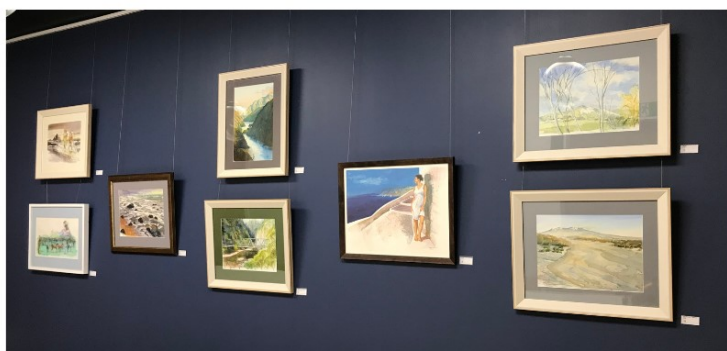
### 'Watercolours' by Haydn Rive

3rd May - 6th June



Don't miss the last few days to view the latest exhibition by WSA tutor Haydn Rive. 8 works are on display in the function room at the rear of the cafe. It's a lovely space to stop and enjoy and coffee and something to eat. Mavis & Co Rototuna is open 7 days.

**Rototuna Shopping Centre**  
**2/44 Horsham Downs Road**



## Exhibition Wednesday 13-18 year olds Art Class

6th June - 4th July

The next exhibition to be on display at Mavis & Co Rototuna is our 13-18 year olds Art Class tutored by Ellie Lee-Duncan. This talented group of teens are sure to have a stunning selection of works worth viewing.

**MAVIS** AND CO

café • bar • bistro

**Rototuna Shopping Centre**  
**2/44 Horsham Downs Road**

## Exhibition



## CHROMA/ CHRÔMA

Carole Shepheard & Holly Shepheard

**Exhibition** Tuesday May 16th – Saturday June 3rd  
Tuesday – Saturday 10am – 3pm

**Opening** Saturday May 20th 3 – 5pm

8 Railway Street  
Newmarket  
Auckland 1023  
[www.railwaystreetstudios.co.nz](http://www.railwaystreetstudios.co.nz)

Railway  
Street  
Gallery  
+  
Studios

## Haydn's Wistful Musings from the past: (12)

### The Arnolfini Portrait (Chasing after Jan Van Eyck)

Jan Van Eyck's Arnolfini double portrait provenance proves a very bumpy ride literally!

Joseph Bonaparte's position as King of Spain was a difficult one indeed. His Brother Napoleon had demanded "50 masterpieces for his museum in Paris" Joseph had set up his own "Museo Josefino" in the magnificent Prado building. But Wellington's troops were advancing and his days were numbered in Spain.

He was planning to evacuate much of the Royal art collection.



When Joseph abandoned Madrid, the royal baggage contained a lot of money, French luxuries plus canvases by Raphael, Titian, and Valazquez. He also took the Van Eyck. But it was at Vitoria 1813 where surrounded by British troops the Royal party was plundered. Joseph escaped on horseback and ended up in America.



*General Wellington*

Wellington's troops took mainly money and any French luxury they could get their hands on including King Joseph's pure silver chamber pot which is still used to serve champagne in the Mess. Distracted in their scramble for gold coins, many paintings were still in the baggage train.

In 1816 Colonel James Hay, a brave Scottish soldier was found to be in possession of the Van Eyck in England. He was very fond of it, how ever at some stage decided to offer it to Prince Regent who was later to be King of England.



**Sir Thomas Lawrence** (Society's favourite portrait artist) was also instrumental in the provenance of van Eyck's double portrait.

Colonel Hay finally decided that the Nation should have this painting and sold it to the **National Gallery** for 600 pounds, it's inventory number 186.



## blue Gallery

### 'Paintings & Sculpture' by The Monday Group with Sylvia Sinel.

blue gallery  
3 Anzac Parade, Hamilton

**20th May - 10th June**

The opening of the Monday Group exhibition was a great turnout on Saturday 20th May. Below are some photos of the event and of the exhibition. Make sure you pop in sometime to view the stunning array of works by these long term, talented WSA painters (Ann Harlow, Jane Finch, Garry Moore, Donna Dold, Pat Berry, Anne Carter-Jones, Susie Verry), and of course the beautiful sculptures by award winning artist and sculptor Sylvia Sinel.



**Open Wednesday - Saturday  
11.30am - 3.00pm**

## blue Gallery

### Small Sculpture Award

blue gallery  
3 Anzac Parade, Hamilton



**Opening Event &  
Awards Evening**

**Friday 23rd June**

**5.30pm-7pm**





## Print Day in May

Print Day in May is an annual, global celebration of printmaking taking place on the first Saturday in May and is open to all. On that day, tens of thousands of printmakers around the world make prints and share their experiences with others.



Printmakers celebrate Print Day in May in print shops, studios, kitchens, on beaches, and on sidewalks all over the world. For 24 hours, as the day unfolds around the globe, participants in over 80 countries join in this powerful celebration of creativity. By nightfall we share our work on social media and here on the PDiM website with thousands of others, creating a community chain around the world.

**WSA Printmaker Amanda Talsma-Williams** explains the inspiration behind her creations this year.

Regards the theme: I have a 16 year old at home just turned 17: it sometimes feels we turn a leaf in the book of her childhood each day, which made me think of leaves, pages, art books, etc. I decided I would try to print 16 leaves of interest from my neighbourhood. Here at home, I am developing a productive garden focusing on fruit trees, New Zealand natives, and raised beds: there are many trees and other productive leaves to choose from.



I took some samples into the studio, thinking I would improvise a variety of techniques to generate 16 images of leaves at all four seasons. Perhaps arranged four x four or in a 16 spoked wheel by season. It was a bit ambitious for the time: in three hours, I only used about half of the leaves I had brought or listed. If I had been more focused and prepared, perhaps I would have got more done, but I get so much joy out of 'seeing what turns out' that I prefer to improvise. But I did get 17+ prints from sycamore, maple/liquid amber? (from walks in public garden across the road and collecting leaves for composting), nasturtium, loquat (that the cat brings home from two doors down - she thinks we need feeding?), cabbage tree leaves (which we bundle up for excellent firelighters this time of year), and flax. I would still like to print the kumara (sweet potato) leaves that have monstered our raised bed this growing season, and the apple leaves remaining after harvesting and bottling 4 buckets of the best cooking apples in the world (I think. Ballarat, if anyone's asking). Then there's options of pear, peach, ornamental cherry, butternut squash, feijoa, rhubarb, sage, thyme, basil, tangelo, ash (for beauty rather than food production of course, but still useful), without even getting down to the radishes, beetroot and smaller vege starting out in the winter beds.

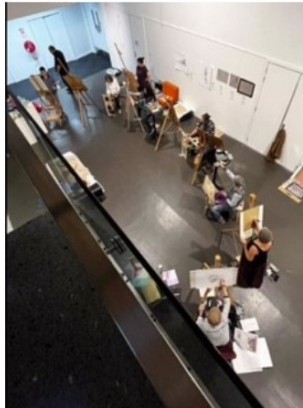
Perhaps that can be my term project for class: capturing the range of leaves all around me everyday. 16 is only the start!





## Life Drawing at the Meteor

Come and view life drawing in action on Monday 5th June (King's birthday Monday) 6pm-8pm. Held at The Meteor Theatre, 1 Victoria Street Hamilton. (Corner of Victoria Street & Anzac Parade). Artworks can be purchased through Silent Auction and will be on display until 18th June, Thursday-Saturday 11am-2pm. For more information contact srodgers50@icloud.com or The Meteor Theatre 027 529 4470 or themeteor.co.nz



## Advertisement



**WAIKATO  
DECORATIVE  
and FINE  
ARTS SOCIETY**

**The Society offers a programme of lively and informative lectures on art, design, literature, history, and culture.**

***The Sublime in the Everyday: Johannes Vermeer and the Delft School of Painting Signs and Symbols***

Leslie Primo, a specialist in art history who currently lectures at the City Literary Institute (Imperial College, London), will address the Society on Johannes Vermeer, the Dutch painter, tracing his early training and influences and how he came to the genre of painting domestic interiors, for which he is renowned. Vermeer's personal history, from being referred to as "the excellent and famous Vermeer" in 1669 to bankruptcy in 1675, will be reviewed, as will his position within the context of contemporaneous Dutch and Delft artists. Leslie will conclude his talk with a look at the 19th and 20th century revival of the artist and the cult of Vermeer that endures to this day.

**DATE**  
Thursday 15 June 2023  
commencing 7.30pm

**VENUE**  
Centre for Performing Arts  
Southwell School  
200 Peachgrove Rd, Hamilton

This is the fourth of eight lectures this year. Further details of the full programme, and contact information, can be found on the Society's website, [www.dfasnz.org.nz](http://www.dfasnz.org.nz).

Annual membership of the Society is available at \$140 (half yearly \$70). Guests are welcome and are asked to pay \$20 per lecture. Complimentary tea, coffee, wine, and sandwiches.

**wsa  
art**  
WAIKATO SOCIETY OF ARTS

**Funnies**



Calendar of Events and Exhibitions

JUNE

| SUN                            | MON   | TUE   | WED   | THU                                | FRI   | SAT   |
|--------------------------------|---|---|---|------------------------------------|---|---|
|                                |   |   |   | 1<br>Term 2<br>Classes<br>Continue | 2   | 3<br>No Classes<br>Classes<br>King's Birthday<br>Weekend                                  |
| 4                              | 5<br>No Classes<br>King's Birthday<br>Holiday | 6<br>Haydn Rive's<br>Exhibition at<br>Mavis & Co<br>Rototuna Ends | 7<br>WSA 13-18 year<br>olds art class<br>exhibition at<br>Mavis & Co<br>Rototuna starts | 8                                  | 9   | 10<br>Last Day for<br>viewing 'Paintings<br>& Sculpture'<br>Exhibition at<br>blue Gallery |
| 11                             | 12  | 13  | 14  | 15                                 | 16  | 17  |
| 18<br>NYAA<br>Entries<br>Close | 19  | 20  | 21  | 22                                 | 23<br>Small Sculpture<br>Award Opening<br>Event<br>blue Gallery   | 24<br>Term 2<br>Classes End   |
| 25                             | 26  | 27  | 28  | 29                                 | 30<br>Primary,<br>Intermediate &<br>Secondary School<br>Term Ends |   |

JULY

|    |  |   |   |   |  |   |
|----|--|---|---|---|--|---|
|    |  |   |   |   |  | 1                                       |
| 2  | 3<br>July School<br>Holiday<br>Programme Start | 4<br>July School<br>Holiday<br>Programme  | 5<br>July School<br>Holiday<br>Programme  | 6<br>July School<br>Holiday<br>Programme  | 7<br>July School<br>Holiday<br>Programme | 8                                       |
| 9  | 10<br>July School<br>Holiday<br>Programme      | 11<br>July School<br>Holiday<br>Programme   | 12<br>July School<br>Holiday<br>Programme | 13<br>July School<br>Holiday<br>Programme | 14<br>Matariki<br>Public<br>Holiday      | 15                                      |
| 16 | 17<br>Term 3<br>Classes<br>Start               | 18  | 19  | 20  | 21                                       | 22                                      |
| 23 | 24   | 25  | 26  | 27  | 28                                       | 29<br>NYAA Awards<br>& Opening<br>Event |
| 30 | 31   | <b>Future Important Dates:</b> <ul style="list-style-type: none"><li>Thursday 10th August WSA Members Exhibition Entries Close</li><li>Saturday 19th August-10th September WSA Members Exhibition</li><li>Monday 18th September Term 3 Ends</li><li>Monday 25th September September/October School Holiday Programme Starts</li></ul> |   |   |  |   |



## Sponsors

We would like to thank our sponsors for their support of the WSA.





**Gordon Harris**  
THE ART & GRAPHIC STORE

# AUTUMN SALE

## PRICES FALL ON QUALITY ART MATERIALS\*

\* SELECTED PRODUCTS

386 Anglesea Street, Hamilton  
In-store & Online  
[www.gordonharris.co.nz](http://www.gordonharris.co.nz)  
Sale ends: 03/07/23

A very special thanks to SHARP, who continue to help us substantially with printing.

# SHARP

## Be Original.

### NEWSLETTER ADVERTISING

Whether you're a member or not, we are excited to hear about your art-related adventures, exhibition reviews or travels, accompanied by your own photos. These will be reviewed by the WSA and included if we have space and they do not conflict with our operations. The Executives decision is final. Please contact us at [wsa@wsa.org.nz](mailto:wsa@wsa.org.nz)

### WSA OFFICE AND ART SCHOOL

120 Victoria Street (above ArtsPost Gallery)  
PO Box 1018, Hamilton 3204  
07 839 4481

#### Office Hours:

Mon-Fri 8.30am-4pm

Sat 9.30am-12.30pm

*(these may vary, please check in advance)*

[artschool@wsa.org.nz](mailto:artschool@wsa.org.nz) for art school enquiries (Paulette)

[wsa@wsa.org.nz](mailto:wsa@wsa.org.nz) for all WSA enquiries (Julie)

**Website:** [www.wsa.org.nz](http://www.wsa.org.nz)

*(Paulette works in the office 22 hours per week, if you need a faster reply please include Julie's email)*

### WSA EXECUTIVE COMMITTEE

Patron: Nancy Caiger

Committee: Michelle O'Brien  
Nicolas Wells  
Melany Sutherland  
Gemma Reid  
Holly Tawhaio

Treasurer & Chair: Rachael Hayton  
Hon. Solicitor: Charlotte Isaac  
Hon. Secretary: Julie Johnstone