



Art Connections

WAIKATO SOCIETY OF ARTS

PO Box 1018 Hamilton 3240 www.wsa.org.nz

Welcome to our June newsletter

Firstly, we would like to say thank you to Amanda and Paulette for hanging and taking down our Members Small works exhibition in the Next Level gallery during May. With a membership of over 350 people, we are always so appreciative to those who continue to give a little bit of their time back to the Society. With our exhibitions, it is great to see new faces and experienced volunteers come along and help to take over these tasks and make our time in the office more efficient. If you think you would like to be more involved but can only help out of office hours, please let us know as we can try to work around this, to make the most of your generosity.

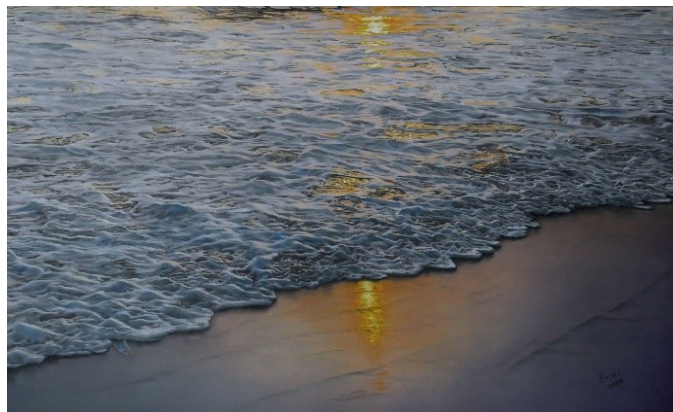
We held a free workshop, developed by Sue Burnett, for the National Youth Art Award's local entrants. This was full of great tips, for anyone really, on how best to present and price your work to be exhibition ready. This document has been uploaded to our website for anyone who may want some handy pointers on framing, artist statements and general exhibition and awards procedures. Thank you Sue, for the time you have put into preparing this information for exhibiting artists.

Our website has recently had some more upgrades to it, to make looking through our news, events, joining as a member, enrolling into art classes and workshops more efficient. Being able to become a member online, now lets you take advantage of the class discounts and other benefits that come with being a part of the Society. We are always looking for partnerships with artists, individuals and businesses where we can encourage visual art in new areas and promote what creatives are doing in the Waikato area. We would love to hear from you if you have a story to share or have been busy working on a new artistic venture you want more people to learn about.

We have some exciting exhibitions coming up in the Next Level Gallery in June, beginning with Libby Vandy-Mines and then our tutors, Anya and Susannah with their class exhibitions. Our gallery is about giving all our students and members, no matter what age or skill level the opportunity to showcase their work, either as an individual or collectively. It is a rewarding experience for artists of any experience to see their work hanging in a gallery. This is an important part of our mission and a privilege to be able to provide the facilities to further people's artistic endeavours. Thank you to everyone who supports our gallery and the artists who exhibit in there.

Our Member's exhibition downstairs at ArtsPost is coming up fast as 2021 keeps flying by. We hope you are all working toward this annual event on the WSA calendar. Due to the overwhelming response we had last year we have limited the amount of entries to two per artist. Entries close July 19th.

This year, as our island home begins to emerge from over a year of isolation from the rest of the world, we display the work of our members, created over this period. After a challenging 2020, some of this work may reflect on our common Kiwi experiences (words courtesy of Michelle O'Brien)



People's Choice Award Winner, 2020 - Briar Tucker - Something There To Remind Me - Pastel

Thank you, Julie

June 2021

NATIONAL YOUTH ART AWARDS



wsa
art
2021

ENTRIES CLOSE JULY 30TH

WSA.ORG.NZ

Entries Close
September 6, 2021

The New Zealand Painting
and Printmaking Awards

NZ^{wsa art}
PPA | 20
21

Major Prize Award
\$20,000

wsa.org.nz

ENTER ONLINE NOW

Monthly SOCIAL ART NIGHT

\$40

all materials inc

Next session
Wednesday
2nd June
6.30pm



<https://wsa.org.nz/art-school/monthly-social-paint-night-all-materials-included/>

Next Level Gallery - Current & Upcoming Exhibitions

Libby Vandy-Mines

Landscapes from coastal Whaingaroa Harbour to Inland Hawkes Bay.

27th May - 9th June

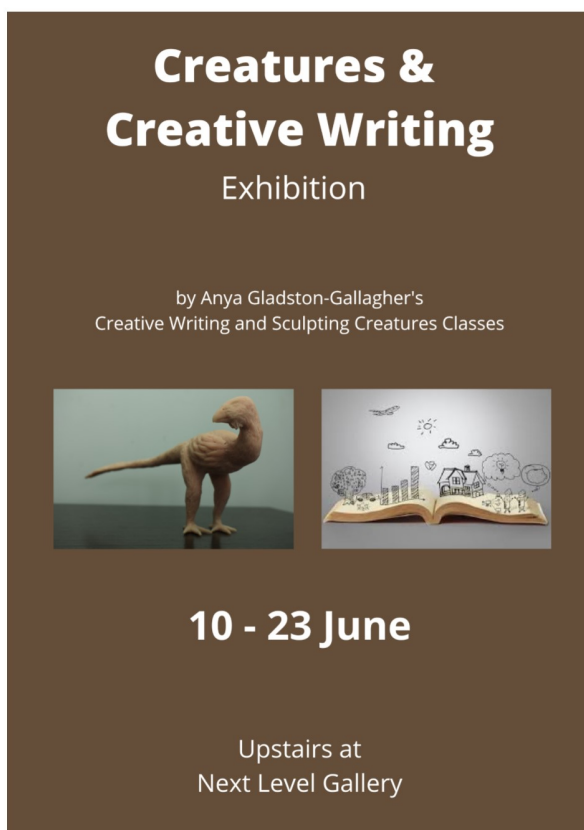
Our Current Exhibition is by one of our long term students Libby Vandy-Mines.

Be sure to pop up to view the stunning artworks in her exhibition on until 9th June.



Anya Gladstone-Gallagher's Sculpting Creatures & Creative Writing Classes

10th -23rd June



Susannah Salter's Class Exhibition

24th June -30th June



NEXT LEVEL GALLERY
is located upstairs at 120 Victoria Street
Hamilton 07 839 4481

Hours; Monday - Friday 8.30am-4pm
Saturday 9.30am-2.30pm.

24 June to 30 June @ Next Level Gallery, Waikato Society of Arts, Hamilton
Opening event: Sat 26 June 1pm. All welcome!

Workshops

We have a variety of workshops on offer this year by current and past WSA tutors.

For more information click on the link <https://wsa.org.nz/art-school/classes/?term=workshops>

Mokuhanga Print Workshop

with Sybille Schlumbom

Held at Waikato Society of Arts Printroom
120 Victoria Street, Hamilton



**Saturday 12th
&
Sunday 13th June**

10am to 3pm

\$130pp
(includes basic materials)

Enjoy a weekend of creativity! Learn about mokuhanga in a relaxed environment and create your own postcard sized prints. Mokuhanga has a long history in Japan and is best known for the Edo period ukiyo-e prints. The process uses water-based inks and is executed with a handheld baren instead of a printing press. In this workshop you will work with partly pre-cut plates. With one on one support from the tutor you will carve a plate for the two-colour image you will print on the second day. Simple designs will be available, but feel free to bring your sketch books and ideas!

Enrol online at www.wsa.org.nz
(Click on Art School then select Workshops)
Or email artschool@wsa.org.nz
Phone 07 839 4481

WATERCOLOUR WORKSHOPS 2021

Suitable for Beginners & Continuers

Maximum 8 people per workshop

- **Techniques for flowers**
Sunday 20th June
- **Solving common mistakes**
Saturday 24th July
- **Creating original art**
Sunday 5th September
- **Mastering washes for landscapes**
Saturday 16th October

Run by Waikato Society of Arts long term experienced Watercolour Tutor Paulette Bruns

For specific details on the content being covered in each workshop view at www.wsa.org.nz click on 'artschool' then 'workshops'

To Enrol email, text or phone:
Paulette
paulettebruns2@gmail.com
021-162 9545

All materials supplied inc refreshments



\$90pp
10am to 3pm

Kate Symmans presents

INTRO TO AN ART CAREER

Pricing, proposals & promotion.
Workshop & brainstorming session

Pricing, materials and why they matter.

- breaking down your costs
- to frame or not to frame
- archival materials
- good quality vs less
- * demo and playing with product

Proposal writing and Artist Statements

- entering awards
- proposal options, budget breakdown
- artist statement
- *time to write our own artist statements or mock proposal
- *prints & photographing your artwork tips*

Galleries and promotion

- dealer galleries pros and cons
- selling on consignment
- networking
- commission work

Saturday 10th July
1pm -4pm

\$25 pp

www.wsa.org.nz



WATERCOLOUR WORKSHOP DETAILS

Suitable for beginners or continuers

Over the years I have painted, exhibited and taught watercolour. I have noticed there are some common problems students struggle with in watercolour. Anyone can paint in watercolour, but to truly produce skilled, beautiful watercolours you must advance in certain techniques. There are essential tips, methods, equipment and paint & theory that can make a huge difference to helping you learn to overcome these stumbling blocks. Without this knowledge you will continue to be frustrated by only producing 'average' or 'overworked' paintings. The skills learnt in these workshops are transferable to any style of watercolour and any subject matter.

In the 5 workshops below I will teach you essential skills to advance and elevate your art. Workshops can be a great way to focus on a particular skill or problem in one session. By keeping the workshop to 8 students maximum I can give valuable time to each of you over the 5 hours.

Techniques for flowers Sunday 20th June
Learn the finer details to paint beautiful realistic flowers including glazing, texture, multi tonal blending, shadow/highlight placement, leaves, stems & water droplets. As well as examples and theory you will produce a painting to take home

Solving common mistakes Saturday 24th July
Creating depth in watercolour without the 'over painted' effect. How to avoid 'overworking' and 'muddy' results. Using glazing to correct problems, create 'see through' illuminating layers. Achieving realistic shine in watercolour, be it objects, water, wet ground etc. We will produce some small pieces of art to cover these techniques above.

Creating original art Sunday 5th September
I often find students struggle to 'break free' from copying. When beginning watercolour it is often useful to copy examples to practice with, however it is important you eventually start creating your own original art. Not only for exhibiting and selling, but to also avoid any legal problems. The biggest advantage is the sense of achievement you will have knowing your art is your creation and style. There are some useful guidelines, tips and techniques I will teach you to help you gain confidence in producing your own original art.

Mastering washes for landscapes Saturday 16th October
Washes are an essential part of most watercolour landscapes, whether your style is loose and impressionistic or realism. They often form the base or background of your painting as well as clouds, skies, water and land. In this workshop you will learn techniques to achieve flawless blended washes as well as other landscape tips for all styles.



\$90 pp
10am - 3pm

To Enrol:
Email: paulettebruns2@gmail.com
Text or Phone: 021 162 9544

All materials supplied including refreshments

Workshops Continued

Round Painting Workshop

**Enrol online
at www.wsa.org.nz**

Tutor: Bruce Hill

Date: **Saturday 17th July** (subject to minimum numbers being booked)

Time: 10 am to 3pm

Schedule:
 10 am to 12 pm - Discuss the compositional and geometric differences between round and square painting.
 1. Work on own compositions with references to early modern art composition e.g. Picasso, Braque, Klee and Chagall.
 2. Work on a round composition inside a circular space
 3. Evaluate the compositional differences between the two formats.
 12 pm - 1 pm Lunch and discussion.
 1pm to 3 pm Work on new styles and compositions to create a more nature friendly finished round painting your own.

Materials:
 drawing materials
 A3 paper or larger
 acrylic paints, brushes
 (rectangular and circular cardboard painting supports, supplied by tutor)

Limited to 8 participants Fee \$75 each

Designed for advanced students and/or artists wishing to explore a circular format for visual art expression.

About me:
 I received organic orchard certification 30 years ago and spent 18 years living in the UAE. Just prior to my Middle East sojourn I worked at WSA as a Painting and life drawing tutor. Currently I am working on creating circular paintings for outdoor display. These weatherproofed pieces, although, not made for long term outdoor exposure are designed to harmonise human artistic expression within a natural setting such as a garden.

New Tutors

This year we had 2 fabulous and talented new tutors join the WSA.

Sandra Barlow has joined us in term 2 teaching a Monday evening Watercolour class from 6.15 pm-8.15 pm.

This class is suitable for beginners and continuers wanting to learn a variety of watercolour techniques and styles.

Sandra's cheerful personality and love of watercolour make her a great addition to our skilled and talented team of tutors.

Be sure to secure yourself a space in Term 3 starting 26th July.

\$175 WSA members/\$195 non-WSA members for 9 weeks.

8 spaces maximum.



OBSERVATIONAL DRAWING



5 weeks

**Starting
Wednesday
2nd June**

9.30am-12pm

With Dale Gilmore

Do you want to learn to draw or do you want to hone previously acquired skills?

This course is for all, from beginner to advanced. For beginners we will look at the rules for drawing and progress from there. For more advanced students a brief revisit of the basics will refresh your memories and skills. It will be challenging, are you up for it?

All equipment will be supplied.

Enrol online www.wsa.org.nz

wsa art
 WAIKATO SOCIETY OF ARTS

Dale Gilmore started with us in term 1 teaching a Calligraphy class, and this term is teaching an Observational Drawing class. This new class starts on Wednesday 2nd June from 9.30 am-12 pm, and will run for 5 weeks. In this class, you will learn line drawing, tonal work and the skills needed to advance your drawing. Beginners and more experienced students are both welcome. 8 students maximum.

\$75 WSA members/\$95 non-WSA members. Includes all materials.

Enrol online now to secure your space.

<https://wsa.org.nz/art/observational-drawing/>

Haydns Artyfacts

Three cheers for Women Painters

6 Clara Peeters (1594 ~ 1657)

"Still life" (1607) with a P – shaped pretzel. Clara as a young Flemish teenager painted this. It is dated earlier than her self portrait! It is a wedding piece with various symbolic elements.



We have the green berkemeyer and the venetian wine glass representing husband and wife. There is a heart shaped edible on the tray. Often a couple getting married would both light one candle to unify their marriage. And there is the gold ring – an everlasting symbol with a sprig of rosemary to signify their fidelity.



Again Clara's face is reflected in the brass candlestick holder. The fly is a curious visitor, probably unwanted. But does it signify that nothing is perfect and that the marriage is going to require some effort on behalf of both parties to succeed?



WSA History

We thought it would be nice to put little excerpts into our monthly newsletter about the history of the WSA. The excerpt below is from 'Moves Afoot - A supplementary history of the WSA 1983-2009' by Megan Lyon

The Waikato Society of Arts (WSA) has been a significant part of Hamilton's cultural, historical and community make-up since its inception on 14th August 1934. This was the result of a public meeting convened by two Hamilton artists, Ida Carey and Adeline Younghusband and Dr 'Tim' Rogers, who believed the 'arts should be the heart of life of every town, as a vehicle for the expression of humanity and morality'.

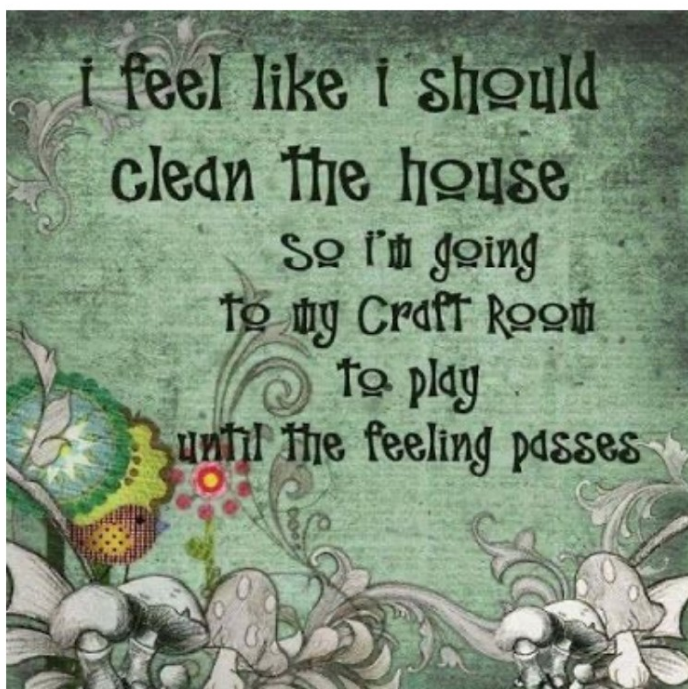


Part 7:

This represented a fundamental change to the WSA as it would therefore 'cease to run its own gallery for the first time in more than 40 years.' HCC subsequently took over the lease of the building in 2006 and since then has operated Artspost as an adjunct to the Waikato Museum. The WSA's administration continues to operate from the second level of the Artspost building alongside the WSA Art School. There have been moves afoot for several years for the WSA to take on a gallery space for its members again, but as yet nothing has come to fruition.

(*You can read previous excerpts of WSA history on our website www.wsa.org.nz click on 'news' then any newsletter from August 2020)

Monthly Funnies



July School holiday programme



MONDAY 12TH JULY TO FRIDAY 16TH JULY
MONDAY 19TH JULY TO FRIDAY 23RD JULY

Mon 12th July - Acrylic Painting & Clay Modelling
Tues 13th July - Drawing Skills & Craft Creations
Wed 14th July - Chalk Pastels & Collage Art
Thur 15th July - Watercolour Creations & Charcoal Art
Fri 16th July - Oil Pastel/Dye & Coloured Paper Creations

Mon 19th July - Paint a winter scene & clay creations
Tues 20th July - Plain & Patterned Paper Art & Craft
Wed 21st July - Draw Animals & decorate with a variety of items.
Thur 22nd July - Cardboard & fabric construction.
Fri 23rd July - Watercolour Backgrounds for detail drawings.

5 - 12 years
9am - 12pm

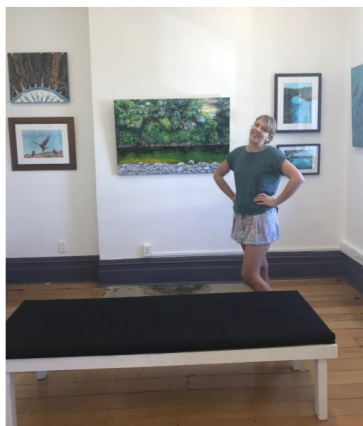
www.wsa.org.nz
artschool@wsa.org.nz

\$35 per child per day or
\$30 per day
if attending
5 days or more.

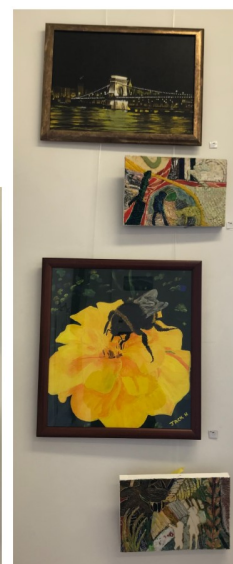
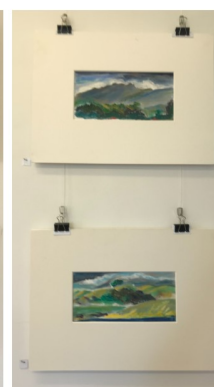
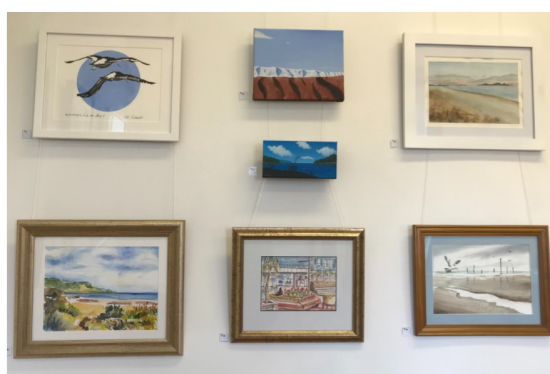
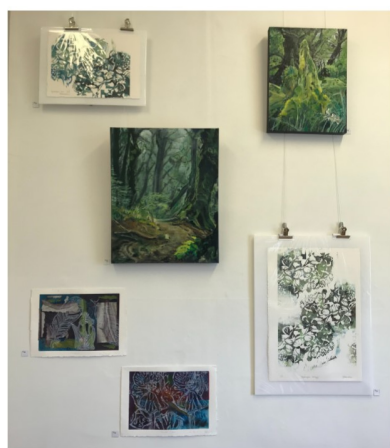


Next Level Gallery

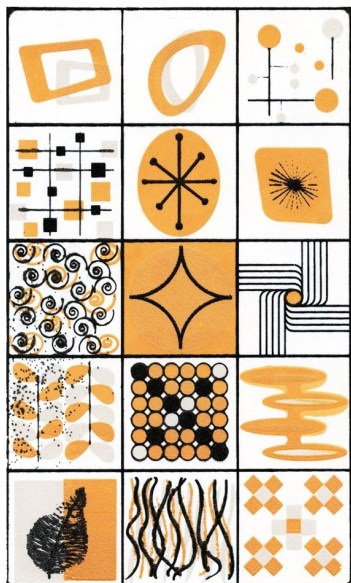
Recent exhibitions in our gallery were Tutor **Monica Schinkel's** personal exhibition, as well as our members exhibition featuring small works, both of which showed an abundance of talent.



Members exhibition - Small Works



WSA Printmakers Exhibition



Event: Next Level Gallery Printmaker's Sampler

Start Date: 1 July, 2021

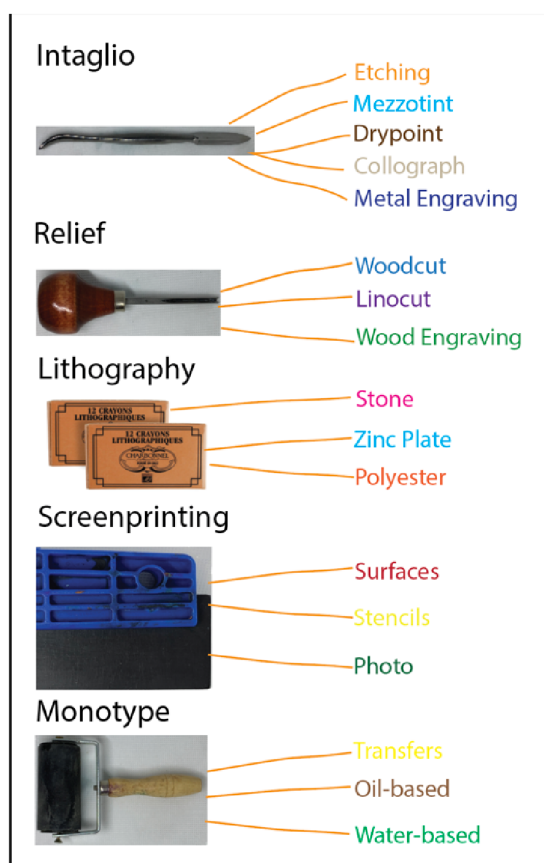
Location: WSA Next Level Gallery Level 1 ArtsPost Building

Entry Fee: Free

Free entry if you have attended or tutored a WSA printmaking class.

There is no size requirement or limit to number of editions. If prints cannot be hung due to size they will be displayed on print racks or tables.

NEXT LEVEL GALLERY PRINTMAKER'S SAMPLER



About Printmaking

Printmaking is a process-based art form, carving a board, inking it up and finally the magic of pulling a print. Well, if the print matches your expectation. But even if it needs correction it just means that the anticipation of the perfect print is delayed.

Being process-based means that there are many decisions to be made in the creation of a print. The first step is the concept and then selecting the method, the clean-cut lines of a screen-print or the "noise" from carving marks on a woodcut? Or perhaps the intricacy of the design in an etching?

Ink and paper both need consideration. Carefully adjusting the press and then the magic.

Hamilton is fortunate to have a facility for teaching printmaking and even more fortunate to have tutors that can teach a variety of printmaking methods. Classes are run by Waikato Society of Arts in the basement of the ArtsPost building.

So an event to showcase the printmaking by tutors and past and present students is an exciting event. Please support the Next Level Gallery Printmaker's Sampler exhibition by entering prints and attending. The exhibition runs from 1 July, 2021.

Term 3 Timetable

TERM THREE 2021 – 9 weeks



Monday 26 July-20 Sept	Tuesday 27 July-21 Sept	Wednesday 28 July-22 Sept	Thursday 29 July-23 Sept	Friday 30 July-24 Sept	Saturday 31 July-25 Sept
Art Taster –Materials Included (Different Art Mediums & Tutors Each Week) Starts 9th August – 6 weeks 9.30 – 12pm Studio 1 \$175, members \$155	Watercolour Haydn Rive Studio 1 9.30 - 11.30am \$195, \$175 members	Watercolour Paulette Bruns Studio 1 9.30 – 11.30am \$195, members \$175	Mixed Media Art Untutored Studio 1 10-12pm \$115, members \$95		Art 5-9 years Dudri du Preez Studio 1 9.30 – 11am \$140
Untutored Painting Studio 2 9.30 – 11.30 \$115, members \$95	The Creative Spark Studio 2 Starts 10 August 8 weeks Sybille Schlumbom 9.30am – 12.30pm \$225, members \$205	Painting and Drawing Techniques Nici Peacock Studio 2 9.30am – 12pm \$205, members \$185	Life Painting Sybille Schlumbom Studio 2 - 8 weeks Starts 10 August 9.30 – 11.30am \$185, members \$165	Watercolour Untutored 9.30 – 11.30am Studio 2 \$115, members \$95	Drawing and Painting 5-9 years Rhiannon Jackson Studio 2 9.30 – 11am \$140
Watercolour Sue Burnett Printroom 9.30 – 12pm \$205, members \$185	Woodcuts Untutored \$115, members \$95 Combined with Caroline Peacocke Experimental Printmaking \$225, members \$205 9.30am – 12pm Print room	Acrylics as You Like It Haydn Rive Print room 9.30 – 11.30am \$195, members \$175	Etching and Drypoint Untutored Print room 9.30am – 12pm \$115, members \$95		Foundation Drawing 8-12 years Zhe Li A.I.R. 9.30am – 11.00am \$135
		Observational Drawing Dale Gilmore A.I.R. Materials inc. 9.30am – 12pm \$185, members \$165			Painting and Drawing 10-12 years Gemma Reid Print room 9.30 – 11am \$140
			Oil Painting Sybille Schlumbom Studio 2 - 8 weeks Starts 10 August 12.30 – 2.30pm \$175, members \$155		Still Life and Portrait Drawing Zhe Li Studio 2 12.00pm – 2.00pm \$195, members \$175
					Acrylics with Zhe Zhe Li Studio 2 2.30-4.30pm \$195, members \$175

Monday 26 July-20 Sept	Tuesday 27 July-21 Sept	Wednesday 28 July-22 Sept	Thursday 29 July-23 Sept	Friday 30 July-24 Sept	Saturday 31 July-25 Sept
Children's Art 5-9 years Paulette Bruns \$140 Studio 1 4pm-5.30pm	Art After School 5-9 years Rhiannon Jackson \$140 Studio 1 4pm-5.30pm	Children's Art 8 – 12 years Paulette Bruns \$140 Studio 1 4pm-5.30pm	Children's Art 5-7 years Paulette Bruns \$140 Studio 1 4pm-5pm	Art After School 5-9 years Dudri du Preez \$140 Studio 1 4pm-5.30pm	
Art 10-15 years Vivien Hendy Studio 2 4pm-5.30pm \$140	Exploring Art Techniques 8-13 years Vivien Hendy Studio 2 4pm-5.30pm \$140	Teenage Art Skills For 13-18 years Ellie Lee-Duncan Studio 2 4-6pm \$150	Exploring Art Techniques 8-13 years Vivien Hendy Studio 2 4-5.30pm \$140	Art After School 10-12 years Gemma Reid \$140 Studio 2 4-5.30pm	
Sculpting Creatures 12+ Anya Gladstone-Gallagher Materials inc. A.I.R. Studio \$165	Creative Writing 8-12 years Anya Gladstone-Gallagher A.I.R. Studio \$135 4pm-5pm		Comic Design 9-12 years Rhiannon Jackson A.I.R. Studio 4 – 5.30pm \$140	Comic Design 5-8 years Rhiannon Jackson A.I.R. 4 – 5.30pm \$140	
	Teenagers Creative Writing 13-18 years Anya Gladstone-Gallagher A.I.R. Studio \$135 5.30pm-7pm		Children's Art 7 – 9 years Paulette Bruns Studio 1 5.30 – 7pm \$140		
Watercolour Evening Sandra Barlow Studio 1 6.15-8.15pm \$195, members \$175	Art 10 – 14 years Rhiannon Jackson Studio 1 6 – 7.30pm \$135	Design Concepts Dale Gilmore Studio 1 6.30 - 8.30pm \$185, members \$165			
Oil Painting Sybille Schlumbom Studio 2 – 8 weeks Starts 10 August 6.30pm-8.30pm \$175, members \$155		Monthly Social Art Rhiannon Jackson Studio 2 Materials inc. 1 st WED each month 6.30pm – 8.00pm \$40 PER SESSION	Life and/or Figure Drawing Gemma Reid 6.30-8.30pm Alternating sessions Studio 2 \$205 full term, members \$185 \$115 half term, member \$95		
Experimental Printmaking Caroline Peacocke 5.45-8.15pm Print room \$225, members \$205		Exciting Etching Untutored Beginners welcome Print room 5.30-8pm \$115, members \$95			

Our Next Level Gallery is also open Saturday's

wsa.org.nz phone: 07-8394481 Mon-Fri 8.30am-4pm & Saturday's 9.30am-2.30pm

Check our website for Workshops and enquire about casual Studio Hire and Birthday Parties here at the WSA

Australian Exhibition of Executive Committee Member Gaye Jurisich

If you have any family or friends in Perth interested in the Arts, you may want to recommend they go along to view Gaye's striking works in this exhibition.

Gaye Jurisich: SECRETS & EXPOSURES



When The Gates Close. 2020, mixed media on board 40 x 48cm

Opening Night Fri 16 July: 6 – 8 pm

View Sat 17 July + Sun 18 July: 10 – 4 pm

Gaye Jurisich lives and works in Hamilton, New Zealand and is the first international artist to exhibit at Kolbusz Space. Hugely accomplished, Jurisich is an extensively respected and reviewed multi-disciplinary artist. This exhibition will be the first time Jurisich will show paintings in Australia and will also include some smaller sculptural works.

Secrets and Exposures are new works which interpret landscape as both narrative and energy, looking past the obvious to the artist's interpretation of time, scale, space, spirit and combines this with her memories, desires, passions and fears.

Instagram

www.gayejurisich.com

CONTACT

hello@kolbuszspace.com

2 Gladstone Street

Perth Western Australia 6000

Waldemar Kolbusz, Director

info@kolbusz.com.au

kolbusz.com.au

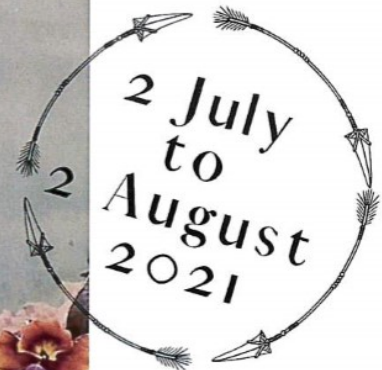


ARTS
FOR HEALTH
COMMUNITY TRUST

presents



Nadia Grace by Jo Mallinger



INTERTWINED

An art exhibition and competition featuring
local Artists & Sculptors

To enter: www.eventspronto.co.nz/intertwined2021

Artspost 120 Victoria St, Hamilton NZ

Proudly supported by



CREATIVE | ALUAHA
WAIKATO | TAINUI

Calendar of Events and Exhibitions



Term 2 Starts (9 weeks)	Monday 3rd May
Workshop—Mokuhanga Printmaking	Saturday 12th & Sunday 13th June 10am-3pm
Watercolour Workshop —Techniques for Flowers	Sunday 20th June 10am-3pm
Workshop—Intro into an Art Career	Saturday 10th July—1pm-4pm
July School Holiday Programme	Monday 12th July –Friday 23rd July
Workshop—Round Painting with Acrylic	Saturday 17th July—10am-3pm
Watercolour Workshop - Solving common Mistakes	Saturday 24th July -10am-3pm
Term 3 Starts (9 weeks)	Monday 26th July
Artspost Members Exhibition	5th August to 6th September
National Youth Art Award (NYAA)	9th September to 11th October
WAIPRINT	9th September to 11th October
Term 4 Starts (8 weeks)	Monday 18th October
New Zealand Paint & Printmaking Award	28th October to 8th November

NEXT LEVEL GALLERY - CALENDAR

Libby Vandy-Milnes Exhibition	27th May to 9th June
Anya Gladstone-Gallagher Class Exhibition	10th June to 23rd June
Susannah Salter's Class Exhibition	24th June to 30th June
WSA Printmakers Exhibition	1st July to 21st July
Gemma Reid's Exhibition	22nd July to 4th August
Zhe Li's Exhibition	5th August to 18th August
NLG Gallery is fully booked for the rest	of 2021

Note to Members

Artspost Gallery & Shop is presently full with art for several months.

So there is no space available for your art to be taken at this time.

We would like to thank our sponsors for their support of the WSA.



Hamilton City



Bustle





Hot Deals

W i n t e r

SALE

Cold Nights

385 Anglesea st. Hamilton
www.gordonharris.co.nz
Sale ends 30.06.2021

Gordon Harris
THE ART & GRAPHIC STORE

FROM THE EDITOR –PAULETTE BRUNS

This WSA Art Connections Newsletter could not be created without contributions from members.

If you have articles you think suitable for our newsletter, please let me know.

A very special thanks to **SHARP**, who continue to help us substantially with printing.

NEWSLETTER ADVERTISING RATES

A GREAT WAY TO SUPPORT THE WSA

Inserts- \$80 per page (*printed & delivered to WSA*)

Full Page - \$240 (*available only if space available*)

Half Page - \$120 colour

Quarter Page - \$70 colour

Opportunities, exhibitions & Member's short ads – up to five lines are free.

SHARP

Be Original.

WSA OFFICE AND ART SCHOOL

120 Victoria Street (above ArtsPost Gallery)

PO Box 1018, Hamilton 3240

07 839 4481

Office Hours:

Mon- Fri , 8.30am - 4pm

Sat 9.30am-2.30pm

artschool@wsa.org.nz for art school

wsa@wsa.org.nz for all WSA enquiries

Website: www.wsa.org.nz

Paulette works in the office 20 hours per week, if you need a faster reply please include Julies email wsa@wsa.org.nz

WSA EXECUTIVE COMMITTEE

Patron:

Joan Fear

Committee:

Michelle O'Brien

Nicolas Wells

Melany Sutherland

Gemma Reid

Gaye Jurisich

Karen Taylor

Treasurer & Chair:

Rachael Hayton

Hon. Solicitor:

Charlotte Isaac

Hon. Secretary:

Julie Johnstone