



Art Connections

WAIKATO SOCIETY OF ARTS

PO Box 1018 Hamilton 3240 www.wsa.org.nz

Welcome to our June newsletter for 2020.

Our Next Level Gallery Members exhibition will be hung on June the 3rd if any members would like to drop in art for this or offer their help to hang the exhibition. The entry fee is \$5 per entry, \$15 maximum and you may enter up to 4 pieces.

Our updated website is now live and if you have not already been emailed regarding your password for this, please contact me at the WSA office so we can get you registered. This also means if you are an artist you can create your artist profile for anyone visiting our website to see. This is another useful resource if you are wanting to get your work out into the public arena more and link it with your other social media sites.

Our art classes for term 2 have begun and although we have restricted some of the classes for social distancing, it has been great having students back in the building. Suddenly the place has a lot more life and feels more like previous terms. There are still spaces in some classes if you wish to enrol online. We are slowly working our way back to what life was like before Covid-19. The term 3 timetable is now online if you would like to secure your class booking early.

We have a busy six months coming up with our annual exhibitions being hosted at ArtsPost or at the Atrium in WINTEC. Please make sure you go online to find out the details to enter these. Thank you to all our sponsors and funders who help make these exhibitions and awards increasingly popular for artists to enter, these definitely would not be possible without your continued support and generosity.

Thank you to all our members and students who have emailed in kind wishes over the past few weeks, it is really nice to hear from you. We hope you all enjoy the long weekend and travel safely if you are off to explore some of the beautiful places NZ has to offer and help support the local economies.

Julie on behalf of the WSA Executive

Attention Members

We would love to have any of you contribute to our monthly newsletter. It might be stories or experiences of art, places you have visited relating to art or just inspiring creative ideas you have come across. Maybe your journey of learning and discovery of art. Even stories that have nothing to do with art but are interesting experiences you think might be of interest to the membership. Perhaps even photos with a little description if you don't want to write something.

Anything will be considered 😊

WAIPRINT 2020 at ArtsPost

We're pleased to feature our own Ruth Davey as Guest Artist for WAIPRINT this year. Running concurrently, there will be an exhibition of Ruth's work upstairs at the Next Level Gallery.

Ruth, a WSA Life Member, was responsible for introducing printmaking into the WSA Art School curriculum in the 1970s. Last year her NLG exhibition, 'Ruth Davey Revisited', saw landmark sales. The proceeds from all sales of her prints go to the new Ruth Davey Merit in Printmaking award at the New Zealand Painting and Printmaking Awards.

WAIPRINT and the NLG exhibition will open on Thursday, 10th September. Entries for WAIPRINT will be due at the beginning of September and entry forms will be available in a couple of months.



AUTUMN TERM THREE 2020 – 9 weeks

Monday 20 JULY-14 SEPT	Tuesday 21 JULY-15 SEPT	Wednesday 22 JULY-16 SEPT	Thursday 23 JULY-17 SEPT	Friday 24 JULY-18 SEPT	Saturday 25 JULY-19 SEPT
Watercolour Paulette Bruns Studio 1 9.30 – 11.30am \$195, members \$175	Watercolour Haydn Rive Studio 1 9.30 - 11.30am \$195, \$175 members	Watercolour Paulette Bruns Studio 1 9.30 – 11.30am \$195, members \$175	Mixed Media Art Untutored Studio 1 9.30 – 11.30am \$195, members \$175		Drawing and Painting 5-8 years Rhannon Jackson Studio 1 9.30 – 11am \$135
Untutored Painting Studio 2 9.30 – 11.30 \$115, members \$95		Painting and Drawing Techniques Nici Peacock Studio 2 9.30am – 12pm \$205, members \$195	Life Painting Susannah Salter Studio 2 9.30 – 11.30am \$195, members \$175	Watercolour Untutored 9.30 – 11.30am Studio 2 \$115, members \$95	Creative Art 9-12 years Sybille Schlumbom Studio 2 9.30 – 11am \$135
Woodcuts Untutored \$115, members \$95 Combined with Caroline Peacocke Experimental Printmaking \$205, members \$185 9.30am – 12pm Print room	Acrylics as You Like It Haydn Rive Print room 9.30 – 11.30am \$195, members \$175	Etching and Drypoint Untutored Print room 9.30am – 12pm \$115, members \$95			Foundation Drawing All ages Zhe Li Artist In Residence 9.30 – 11am \$145, members \$125
Art for pre-schooler and parent Monica Schinkel Studio 1 1 – 2 PM \$125	Beginner Drawing Skills for Landscapes and City Scenes Paulette Bruns Studio 1 1 – 3 pm \$185, members \$165	Sashay of Exploration- Understanding Drawing Gaye Jurisich Studio 2 1 – 3pm \$185, members \$165	Watercolour all Levels Sue Burnett Studio 1 1 – 3pm \$195, members \$175		Still Life and Portrait Drawing for all ages Zhe Li Studio 2 12 – 2pm \$165, members \$145
			Landscape in Oils Susannah Salter Studio 2 12.30 – 2.30pm \$195, members \$175		Please Turn Over for More Classes

Our Next Level Gallery is also open Saturday's 10am – 3pm

Check our website for Workshops and enquire about casual Studio Hire and Birthday Parties here at the WSA

AUTUMN TERM THREE 2020 – 9 weeks

Monday 20 JULY-14 SEPT	Tuesday 21 JULY-15 SEPT	Wednesday 22 JULY-16 SEPT	Thursday 23 JULY-17 SEPT	Friday 24 JULY-18 SEPT	Saturday 25 JULY-19 SEPT
Children's Art 5-9 years Paulette Bruns Studio 1 4-5.30pm \$135	Art After School 7-9 years Monica Schinkel Studio 1 4-5.30pm \$135	Art After School 7-9 years Paulette Bruns Studio 1 4-5.30pm \$135	Children's Art 5-7 years Paulette Bruns Studio 1 4-5pm \$135	Art after School 5-7 years Studio 1 4-5pm \$135	Acrylics with Zhe Zhe Li Studio 2 2.30-4.30pm \$175, members \$155
Advanced Art 10-15 years Vivien Hendy Studio 2 4-5.30pm \$135	Exploring Art Techniques Vivien Hendy Studio 2 4-5.30pm \$135	Art After School 5-7 years Sybille Schlumbom Studio 2 4-5pm \$135	Exploring Art Techniques Vivien Hendy Studio 2 4-5.30pm \$135	Art After School 7-9 years Gaye Jurisich Studio 2 4-5.30pm \$135	
		Creating Worlds 13-18 years Ellie Lee-Duncan Artist in Residence Studio 4-5.30pm \$135		Art After School 10-14 years Sybille Schlumbom Print room 4-5.30pm \$135	
	Art 10 – 14 years Rhiannon Jackson Studio 1 6 – 7.30pm \$135	Art After School 5-7 years Sybille Schlumbom Studio 2 5.30-6.30pm \$135	Art 7 – 9 years Paulette Bruns Studio 1 5.30 – 7pm \$135		
Watercolour Paulette Bruns Studio 1 6-8pm \$195, members \$175	Introduction to Animation and Character Design Sophia Kinane Studio 2 6.30-7.30pm \$145, members \$125		Life and/or Figure Drawing Kate Symmans 6.30-8.30pm Alternating sessions Studio 2 \$205 full term, members \$195 \$105 half term, member \$100		
Oil Painting Nici Peacock Studio 2 6-8pm \$195, members \$175					
Experimental Printmaking Caroline Peacock 5.45-8.15pm Print room \$205, members \$185	Exciting Etching Untutored Beginners welcome Print room 5.30-8pm \$115, members \$95				Please Turn Over for More Classes

Our Next Level Gallery is also open Saturday's 10am – 3pm

Check our website for Workshops and enquire about casual Studio Hire and Birthday Parties here at the WSA

JULY SCHOOL HOLIDAY PROGRAMME



Monday 6th July to Friday 10th July

Monday 13th July to Friday 17th July

9am -12pm.

5 - 13 years old.

Monday 6th July - Acrylic Painting Skills & Clay Modelling fun.

Tuesday 7th July - Collage Artworks & Watercolour, Salt & Pen.

Wednesday 8th July - Chalk Pastel Sunsets & Creative Hanging Mobiles.

Thursday 9th July - Drawing Vanishing Point Art & Oil Pastel & Dye Fun.

Friday 10th July - Cardboard, Fabric, Glue & many other objects you create whatever you want (art, house, fashion, creature, vehicle....)

Monday 13th July - Abstract painting fun & Creative Clay Creations.

Tuesday 14th July - Flying paper craft & Cardboard Creations.

Wednesday 15th July - Colourful Tissue Art & Cartoon Characters.

Thursday 16th July - Dot & Pattern Painting & Craft Creativity.

Friday 17th July - Wooly Art & Watercolour & Dye.

\$35 per day or \$30 per day if attending 5 days or more.

artschool@wsa.org.nz

www.wsa.org.nz

07 839 4481

120 Victoria Street, Hamilton.



Creative at Home Packs

We have been busy creating a range of Art Activity Packs geared mainly towards children & youth, but of course they can be enjoyed by any age group (adults included 😊).

Each pack includes **EVERYTHING** you will need to complete the activity eg. Glue, scissors, pencil, eraser, paint, paper etc. They also come with instruction sheets & several packs have more than one activity for different ability levels Easy, Medium, Hard.

The packs are for sale for \$10 - \$12 each or save & buy 10 packs for \$90. You can purchase the packs by emailing artschool@wsa.org.nz or phoning 07 839 4481. Packs can either be collected from the office at the WSA or we can courier for \$6 within NZ. We plan to add more packs so that you have a great variety to pick from for now and in the future.

Save & buy 10 packs for \$90

COLOURED PAPER ARTWORKS

Pack includes everything needed to complete the activity.



www.wsa.org.nz
artschool@wsa.org.nz
07 839 4481
120 Victoria Street, Hamilton..




- Instruction Sheet
- Examples
- Coloured Paper
- White Card
- Glue Stick
- Scissors
- Pencil
- Eraser
- Sharpener


\$10

LEARN TO DRAW UPSIDE DOWN

Pack includes everything needed to complete the activity.



www.wsa.org.nz
artschool@wsa.org.nz
07 839 4481
120 Victoria Street, Hamilton..



- Instruction Sheet
- 8 Pictures to draw.
- 2 Easy
- 2 Medium
- 2 Hard
- 2 Advanced
- Grid paper
- Colour pencils
- Pencil
- Eraser
- Sharpener

\$10

DOT PAINTING

Pack includes everything needed to complete the activity.



www.wsa.org.nz
artschool@wsa.org.nz
07 839 4481
120 Victoria Street, Hamilton..



- Instruction Sheet
- Examples
- Black Paper
- Cotton buds
- Non-toxic paints
- Circle Templates
- Pencil
- Eraser
- Sharpener

\$10

MANDALA CREATIONS

Pack includes everything needed to complete the activity.



www.wsa.org.nz
artschool@wsa.org.nz
07 839 4481
120 Victoria Street, Hamilton..



- Instruction Sheet
- Examples
- Pattern Templates
- 6 Basic & 6 Advanced
- Paper
- Colour pencils
- Pencil
- Eraser
- Sharpener

\$10

LEARN TO DRAW STEP BY STEP

Pack includes everything needed to complete the activity.



www.wsa.org.nz
artschool@wsa.org.nz
07 839 4481
120 Victoria Street, Hamilton..



- Instruction Sheet
- 8 Pictures to draw.
- 2 Easy
- 2 Medium
- 2 Hard
- 2 Advanced
- Paper
- Colour pencils
- Pencil
- Eraser
- Sharpener

\$10

PAPER SNOW FLAKES

Pack includes everything needed to complete the activity.



www.wsa.org.nz
artschool@wsa.org.nz
07 839 4481
120 Victoria Street, Hamilton..



- Instruction Sheet
- Examples
- Coloured paper
- White Paper
- Glue stick
- Scissors
- Pencil
- Eraser
- Sharpener

\$10

PAINT A SUNSET

Pack includes everything needed to complete the activity.



www.wsa.org.nz
artschool@wsa.org.nz
07 839 4481
120 Victoria Street, Hamilton..



- Instruction Sheet
- Non toxic paints
- Paint brushes
- Paper

\$12

CREATE WITH CLAY

Pack includes everything needed to complete the activity.



www.wsa.org.nz
artschool@wsa.org.nz
07 839 4481
120 Victoria Street, Hamilton..



- Instruction Sheet
- 4 Activities
- Pinch Pot
- Rose
- Pencil container
- Mobile Phone holder
- Clay
- Detail stick

\$12

LEARN ABOUT THE COLOUR WHEEL

Pack includes everything needed to complete the activity.



www.wsa.org.nz
artschool@wsa.org.nz
07 839 4481
120 Victoria Street, Hamilton..



- Instruction Sheet
- 4 Activities
- Blank colour wheel.
- Primary, secondary, tertiary.
- Mixing Colours.
- Warm & Cool
- Paper.
- Non toxic paint.
- Paint brush.
- Colour pencils
- Pencil
- Eraser
- Sharpener

\$12

WATER COLOUR PAINTING

Pack includes everything needed to complete the activity.



www.wsa.org.nz
artschool@wsa.org.nz
07 839 4481
120 Victoria Street, Hamilton..



- Instruction Sheet
- Examples
- Paper
- Watercolour paints.
- Paint brush
- Black pen
- Pencil
- Eraser
- Sharpener

\$12

Ukiyo-e Workshop

My lockdown project inspired me to a workshop I would like to offer. Mokuhanga (Japanese woodblock printing) is best known for the “images of a floating world” (ukiyo-e prints) of the Edo period. During lockdown, I carved and printed a copy of the Hokusai print “Orange Orchid”.

Traditionally, copying a print is common practice in Japan. The originals were commissioned by a publisher, who would choose a designer (artist), carver and printer to work together on the execution. Following this tradition, modern day publishers still work with carvers and printers to recreate ukiyo-e as well as contemporary prints.

In this workshop, which has the aim to introduce you to the traditional technique of mokuhanga, you are provided with a block that carries the design for a three-plate traditional ukiyo-e print.

The first two days we will spend with carving and learning about the different cutting methods, timbers and registration marks. The third day is dedicated printing day.

This is a process-based workshop, and additional plates for printing will be available.



Image provided by rawpixel, id 262055 : Sparrows on snowy berry bush by Ohara Koson (ca. 1877-1945)

PS: this is not the print we will be making in the workshop. You can also see that this one consists of 6 plates.

For further questions, please contact the office or me directly, sybille.schlumbom@gmail.com.

**Fri 10th
Sat 11th
Sun 12th
July**

**10am -4pm
\$270 for the 3 days**

wsa@wsa.org.nz

10am - 3pm

WSA & Paulette Bruns are
excited to bring you...

Watercolour Workshops

2020



\$90

each
workshop

Includes
All Materials
Tea/Coffee/Biscuits
8 Students Maximum

Email: paulettebruns2@gmail.com
or text or call Paulette 0211629545

Sunday 9th August

NEGATIVE PAINTING

Negative painting in watercolour is a unique, layered & beautiful technique that showcases the transparency and luminosity only watercolour can. Suitable for all levels.

Sunday 20th Sept

PAINTING FLOWERS

Learn the finer details to paint beautiful realistic flowers including glazing, texture, multi tonal blending, shadow/highlight placement, leaves, stems & water droplets. Suitable for all levels.

Artyfacts from Haydn

Touring with the Fantin- Latours: 10

Escape from Realism

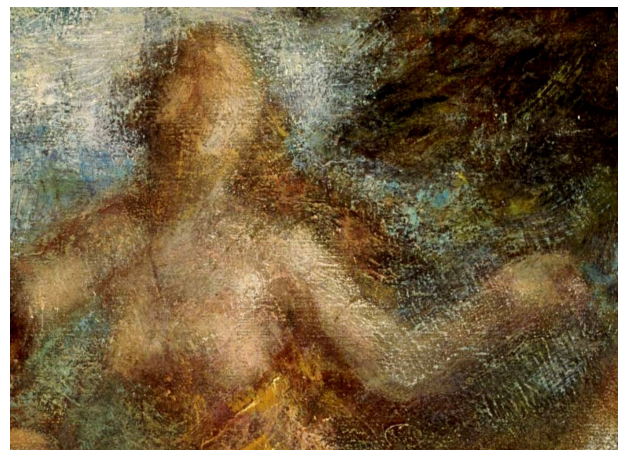
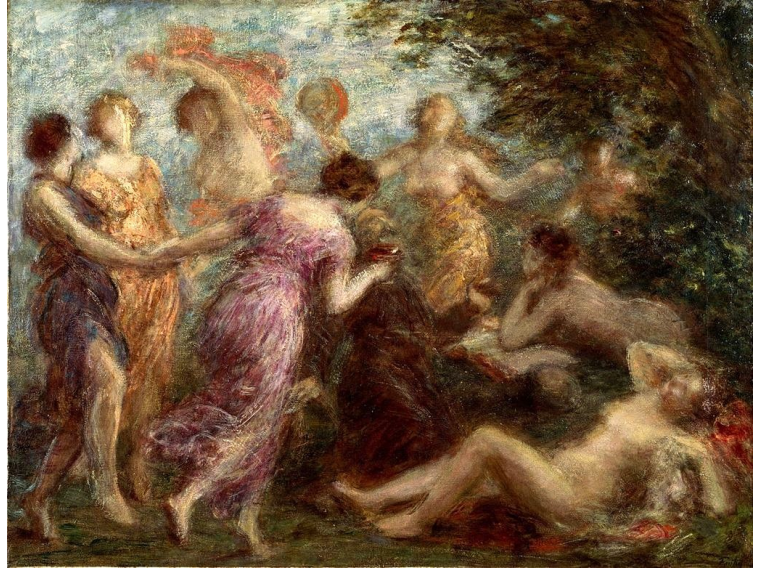
In the final of this series we discover another side to Henri Fantin – Latour. Critic Rene-Marc Ferry wrote: “When he found realism too limited and stifling, he lost himself in dreams, but his dreams went no further than the windows of his studio.” (1904)

Henry would wind up his gramophone and play Schumann and Wagner.

That would get his *mojo* going and he would get into allegorical and mythological

subjects. This painting is called “**The Temptation of Saint Anthony.**” It has little that is related to the real St. Anthony of Egypt who fasted and prayed on a mountain in Egypt. We know that seductive female phantoms were part of his temptations. That has given artists great and fantastic ideas through out the ages. This is pretty mild by comparison.

What we really have here are really beautiful passages of paint and “impressionistic” versions of reality – best enjoyed close up!



So there we leave Henri to his private dreams absolutely free and dancing around his studio. These are works where he does not have to please anyone but himself.



WAIKATO SOCIETY OF ARTS

STUDIO HIRE & BIRTHDAY PARTIES

contact wsa@wsa.org.nz for more info
or 07 839 4481 or www.wsa.org.nz

If you would like to hire one of our studios for a Birthday Party, run a workshop, have a meeting or anything else where you need a space; then contact our office to see what we can do to make it work for you.

Our parties can be run by us; you can choose from several themes or we can follow what you would like & you can supply your own materials. Generally they run for 1-2 & half hours depending on age.

If you are holding a workshop or a meeting we have several options along with a digital projector available for use. We can accommodate most requests day or evening.



For hire:

8 interlocking display panels. 1200mm x 1500mm with 2100mm high stands. \$20 per panel, you will need a minimum of 3 to support free standing.

Contact the WSA office for more information or bookings.

wsa@wsa.org.nz

07 8394481



Calendar of Events and Exhibitions



Term 2 Classes - Restart

Monday 18th May - (6 weeks)

School Holiday Programme

Monday 6th July –17th July

Ukiyo-e Workshop with Sybille

10th July—12th July

Term 3 Starts

Monday 20th July - (9 weeks)

National Youth Art Awards

Entries Close Friday 27th July 11.59pm

NZPPA Awards—Entries Close

Friday 7th August @ 11.59pm

NYAA

Finalists notified by 10th August

ARTSPOST Members Exhibition

6th August—6th September

NZPPA Awards—Finalists notified by

Monday 24th August by 4pm

Waiprint Entries Close

2nd September

NYAA & Waiprint Exhibition

11th September—12th October

NZPPA Opening & Prize giving

Friday 2nd October @5.30pm

Term 4 Starts

Monday 5th October (8weeks)

NZPPA Judges Talk

Saturday 3rd October @10am

PCANZ Talk

Saturday 3rd October

NZPPA Exhibition

3rd October—5th October

NEXT LEVEL GALLERY - CALENDAR

NLG Vivien's Class Exhibition

23rd August—6th September

NLG Members Exhibition

Entries in by 4pm Monday 1st June

NLG Members Exhibition

Thursday 4th June –1st July

NLG Paulette's Watercolour Classes
Exhibition

2nd July—29th July

NLG Nici's Class Exhibition

30th July—12th August

NLG Ruth Davey Print Exhibition

10th September—7th October

NLG Peter Garland Exhibition

1st October—29th October

NLG Felipe Queriquelli Exhibition

30th October—12th Nove

Please express your interest if you want to exhibit at The NEXT LEVEL GALLERY in 2020.

Email the office at wsa@wsa.org.nz

We would like to thank our sponsors for their support of the WSA.



CREATIVE WAIKATO | AUHA TAINUI

THE PHILIP VELA FAMILY TRUST



the FRAMING WORKSHOP



chowhill



Sir John Logan Campbell Residuary Estate





SALE ENDS 05/07/20

ANNIVERSARY

SALE

ONLINE & INSTORE
385 ANGLESEA STREET
HAMILTON



www.gordonharris.co.nz

FROM THE EDITOR –PAULETTE BRUNS

This WSA Art Connections Newsletter could not be created without contributions from members. If you have articles you think suitable for our newsletter, please let me know.

A very special thanks to **SHARP**, who continue to help us substantially with printing, and Warehouse Stationery, corner Ward and Anglesea

NEWSLETTER ADVERTISING RATES

A GREAT WAY TO SUPPORT THE WSA

Inserts \$80 per page (printed and delivered to WSA)

Full Page \$240 (available only if space available)

Half Page \$120 colour

Quarter Page \$70 colour



warehouse
stationery

WSA EXECUTIVE COMMITTEE

Patron: Joan Fear

President:

Committee:

Michelle O'Brien

Mark Dyer

Nicholas Wells

Melany Sutherland

Gemma Reid

Treasurer:

Rachael Hayton

Hon. Solicitor:

Charlotte Isaac

Hon. Secretary:

Julie Johnstone

SHARP

Be Original.

WSA OFFICE AND ART SCHOOL

120 Victoria Street, above ArtsPost Gallery
PO Box 1018, Hamilton 3240, Phone 07 839 4481

Mo - Fri , 8.30am - 4pm

artschool@wsa.org.nz for art school

wsa@wsa.org.nz for all WSA enquiries

Website: www.wsa.org.nz

Editor: Sybille Schlumbom