



## Warren Scotter - Past Honorary WSA Solicitor

Some of you will be aware that sadly Warren passed away on 28 May 2020 after losing his battle with lymphoma. He is survived by his wife Ann, a son, a daughter and granddaughter. Warren attended Canterbury University and as a young lawyer moved to Hamilton in 1970 to take up a position at Harkness Henry. He quickly became a partner at Harkness Henry and remained there all his working life. He specialised in litigation, often representing the ordinary person. He retired from his partnership at Harkness Henry in 2016 but continued to work part time as a litigation consultant for them. Warren held a number of positions in the Law Society and was a great supporter of the Waikato University Law School. He was also very supportive of young lawyers and worked to improve the law. In 2014 The University of Waikato awarded him an Honorary Doctorate of Laws. He was a kind, generous man who was very approachable and interested in what others were doing. He was a great supporter and collector of the arts, regularly attending WSA exhibitions, the NZPPA and no doubt other exhibitions. We at the WSA were privileged to have Warren as our Honorary Solicitor. He held this position for more than 20 years, quietly and calmly providing advice when required and only stepping down in 2017. He will be sadly missed by all of those who knew him. Melany Sutherland and I took Ann flowers and condolences on behalf of the committee and members on 12 June which were greatly appreciated. Our thoughts continue to be with his family and all the others who were unable to his funeral because of the restrictions in place.



Rest In Peace Warren.  
Sue Burnett

**Let's celebrate our volunteers.** It was national volunteer's week, last week and we would like to say thank you to the people that help at the WSA. We are privileged to have an amazing resource of helpful members, WSA friends and students that eagerly say yes when asked to pitch in. You are one group of treasures we have at the Society and for that reason it makes our positions so much more rewarding. Thank you. We are also grateful to have dedicated people who volunteer on the WSA Executive committee, who give up their time, frequently, to continue the governance of our 86 year old society. We have some new initiatives being planned and look forward to implementing these as funding becomes available. The committee maintains, operates and fosters our organisation to promote and preserve art in the Waikato and Aotearoa.

We have such a busy second half of the year coming up with our annual Member's exhibition, our National Youth Art Awards of young NZ artists exhibiting and our very special New Zealand Painting and Printmaking Awards, of diverse artists with incredible talent. Each of these will be having Openings so make sure you set aside the dates and enjoy an evening of art and light refreshments with your fellow art lovers. Again we are humbled by the generosity of our sponsors and we could not continue to support artists and students classes, if this was not helped by local businesses, funders and individuals. Please check out our sponsor's page further on in the newsletter and support them when you can. If you would like to be involved in any of these exhibitions please contact me and I can give you a job that fits in with your skills, this could be hanging, packing down, docents for NZPPA, serving food and drinks at openings. Normally it's only a couple of hours that's involved.

Our Next Level Gallery is fully booked for the year so if you are wanting a gift idea please pop in and check the exhibitions out, they change over every 2-4 weeks. This is another way of supporting local artists and for some of them a platform for their first time at exhibiting. Come and enjoy the exhibitions or enrol in any of our art classes that are taught by highly skilled tutors who love art and are passionate about sharing their skills with their students. Term 3 is on our website and enrolments are open and already filling fast.

We have several workshops happening at the WSA over the next few months. If you are wanting to try something new and cannot commit every week in a term then this is a good option to still get your art fix and begin to learn a new skill.

Enjoy our newsletter and keep giving us feedback on what's not working for you and what you'd like to see happen here at the WSA. This is a not for profit organisation that is community based and we are always happy for constructive ideas to do more in the arts area. Drop in and say hi, email or call us anytime.

Thank you, Julie and Paulette



## WAIPRINT 2020 at ArtsPost

We're pleased to feature our own Ruth Davey as Guest Artist for WAIPRINT this year. Running concurrently, there will be an exhibition of Ruth's work upstairs at the Next Level Gallery.

Ruth, a WSA Life Member, was responsible for introducing printmaking into the WSA Art School curriculum in the 1970s. Last year her NLG exhibition, 'Ruth Davey Revisited', saw landmark sales. The proceeds from all sales of her prints go to the new Ruth Davey Merit in Printmaking award at the New Zealand Painting and Printmaking Awards.

WAIPRINT and the NLG exhibition will open on Thursday, 10<sup>th</sup> September. Entries for WAIPRINT will be due at the beginning of September and entry forms will be available in a couple of months.



# Entries close July 24th

# MEMBERS EXHIBITION

## ARTSPOST GALLERY

### 6 AUG-6 SEPT



Become a member to enter this  
annual exhibition

Enjoy the many benefits of WSA  
Membership including discounted art  
classes & much more...

[www.wsa.org.nz](http://www.wsa.org.nz)

## Creative at Home Packs

We have been busy creating a range of Art Activity Packs geared mainly towards children & youth, but of course they can be enjoyed by any age group (adults included!).

Each pack includes EVERYTHING you will need to complete the activity eg. Glue, scissors, pencil, eraser, paint, paper etc. They also come with instruction sheets & several packs have more than one activity for different ability levels Easy, Medium, Hard.

The packs are for sale for \$10-\$12 each or save & buy 10 packs for \$90. You can purchase the packs by emailing [artschool@wsa.org.nz](mailto:artschool@wsa.org.nz) or phoning 07 839 4481. Packs can either be collected from the office at the WSA or we can courier for \$6 within NZ. We plan to add more packs so that you have a great variety to pick from for now and in the future.

**Save & buy 10 packs for \$90**

COLOURED PAPER ARTWORKS	LEARN TO DRAW UPSIDE DOWN	DOT PAINTING	MANDALA CREATIONS
 Pack includes everything needed to complete the activity. • Instruction Sheet • Examples • Coloured Paper • White Card • Glue Stick • Scissors • Pencil • Eraser • Sharpener <a href="http://www.wsa.org.nz">www.wsa.org.nz</a> <a href="mailto:artschool@wsa.org.nz">artschool@wsa.org.nz</a> 07 839 4481 120 Victoria Street, Hamilton. <b>\$10</b>	 Pack includes everything needed to complete the activity. • Instruction Sheet • Examples • 8 Pictures to draw • 2 Ruler • 2 Sharpener • 2 Glue Stick • 2 Coloured Pencils • Pencil • Eraser • Sharpener <a href="http://www.wsa.org.nz">www.wsa.org.nz</a> <a href="mailto:artschool@wsa.org.nz">artschool@wsa.org.nz</a> 07 839 4481 120 Victoria Street, Hamilton. <b>\$10</b>	 Pack includes everything needed to complete the activity. • Instruction Sheet • Examples • Black Paper • Coloured Paper • Non-toxic paint • Crayon • Pencil • Eraser • Sharpener <a href="http://www.wsa.org.nz">www.wsa.org.nz</a> <a href="mailto:artschool@wsa.org.nz">artschool@wsa.org.nz</a> 07 839 4481 120 Victoria Street, Hamilton. <b>\$10</b>	 Pack includes everything needed to complete the activity. • Instruction Sheet • Examples • Coloured Paper • Glue Stick • Scissors • Pencil • Eraser • Sharpener <a href="http://www.wsa.org.nz">www.wsa.org.nz</a> <a href="mailto:artschool@wsa.org.nz">artschool@wsa.org.nz</a> 07 839 4481 120 Victoria Street, Hamilton. <b>\$10</b>
LEARN TO DRAW STEP BY STEP	PAPER SNOW FLAKES	PAINT A SUNSET	CREATE WITH CLAY
 Pack includes everything needed to complete the activity. • Instruction Sheet • Examples • 8 Pictures to draw • 2 Ruler • 2 Sharpener • 2 Glue Stick • 2 Coloured Pencils • Pencil • Eraser • Sharpener <a href="http://www.wsa.org.nz">www.wsa.org.nz</a> <a href="mailto:artschool@wsa.org.nz">artschool@wsa.org.nz</a> 07 839 4481 120 Victoria Street, Hamilton. <b>\$10</b>	 Pack includes everything needed to complete the activity. • Instruction Sheet • Examples • Coloured paper • White Paper • Glue Stick • Scissors • Pencil • Eraser • Sharpener <a href="http://www.wsa.org.nz">www.wsa.org.nz</a> <a href="mailto:artschool@wsa.org.nz">artschool@wsa.org.nz</a> 07 839 4481 120 Victoria Street, Hamilton. <b>\$10</b>	 Pack includes everything needed to complete the activity. • Instruction Sheet • Non-toxic paint • Paint brushes • Paper <a href="http://www.wsa.org.nz">www.wsa.org.nz</a> <a href="mailto:artschool@wsa.org.nz">artschool@wsa.org.nz</a> 07 839 4481 120 Victoria Street, Hamilton. <b>\$12</b>	 Pack includes everything needed to complete the activity. • Instruction Sheet • Examples • Pack of 100g of clay • Hand saw • Knife • Detail stick <a href="http://www.wsa.org.nz">www.wsa.org.nz</a> <a href="mailto:artschool@wsa.org.nz">artschool@wsa.org.nz</a> 07 839 4481 120 Victoria Street, Hamilton. <b>\$12</b>

## Attention Members

We would love to have any of you contribute to our monthly newsletter. It might be stories or experiences of art, places you have visited relating to art or just inspiring creative ideas you have come across. Maybe your journey of learning and discovery of art. Even stories that have nothing to do with art but are interesting experiences you think might be of interest to the membership. Perhaps even photos with a little description if you don't want to write something.

Anything will be considered 😊



## Top 16 artists confront racism with creativity



10 Jun 2020. Kotahitanga through creativity: Visual artist and experienced curator, Sybille Schlumbom from Hamilton, is keen to spark crucial conversations about kotahitanga through her commissioned piece. In response to alarming signs of racism, 16 Waikato artists have been selected to share their voice through art and spark crucial conversations about unity. To champion the cause, Creative Waikato backed by the Waikato Community Funders Group, has instigated a campaign called 'Kotahitanga through Creativity' which asks artists from the region to create commissioned works across a variety of artforms. Creative Waikato CEO, Jeremy Mayall, believes recent events across the globe have further demonstrated the urgency for action. "We're speaking up against racism through the most powerful language we know – art," says Mayall. "The new collection of works being produced through this campaign will speak to the importance of kotahitanga. Realising the possibility art has to span cultures, Mayall says, "Our hope is that the sheer variety of works across multiple artforms will mean a great diversity of people within the Waikato and beyond will engage with this message." "We need people to do their bit to embrace a new love and understanding of all cultures so we can flatten the curve on racism too." Mayall says the selection panel were encouraged to see so many high-quality proposals for artworks. "When we instigated the project by launching the initial call for proposals, we were responding to isolated incidents of racism being experienced around the region in the wake of COVID-19. "Now, we realise this kaupapa stretches far beyond this," says Mayall. From an open submission process, a total of 16 artists were selected to create eight commissioned works to be shared across the wider Waikato community.

Artists include Simon Te Wheoro (Raglan) who will create a takaka marble sculpture, Sybille Schlumbom (Hamilton) who will create a Japanese woodblock print (mokuhunga), and poet Vaughan Rapatahana (Mangakino) who will create an anthology of poems alongside nine other local poets. Other selected artists are Alice Alva, Dawn Tuffery, Lucie Blazevska, Robin Ranga and Stephanie Christie who are working on pieces in digital, animation, clay, and literary spheres. The selection of works will be hosted in an online gallery launching Tuesday 30 June. "It's exciting to anticipate how creativity can rebuild our communities into resilient, diverse, and beautiful places for all people to thrive," says Mayall. The Waikato Community Funders Group takes a collaborative approach to funding opportunities across the Waikato and includes the Brian Perry Foundation, Braemar Charitable Trust, The Department of Internal Affairs, DV Bryant Trust, Gallagher Foundation, Len Reynolds Trust, Momentum Waikato, Trust Waikato, WEL Energy Trust, Hamilton City Council and Waikato Regional Council.

## WSA History

**We thought it would be nice to put little excerpts into our monthly newsletter about the history of the WSA. The excerpt below is from 'Moves Afoot - A supplementary history of the WSA 1983-2009' by Megan Lyon**

The Waikato Society of Arts (WSA) has been a significant part of Hamilton's cultural, historical and community make-up since its inception on 14th August 1934. This was the result of a public meeting convened by two Hamilton artists, Ida Carey and Adeline Younghusband and Dr 'Tim' Rogers, who believed the 'arts should be the heart of life of every town, as a vehicle for the expression of humanity and morality'.

Throughout its history, and with particular reference to the past 25 years, the WSA has actively pursued its mission to create art connections and provide the art needs of the visual artist at every stage of their development. This is achieved through the vehicles of membership to the society, through its art school, exhibitions and awards. Significantly in this period the WSA has created and developed two nationally important art awards. The National Contemporary Art Awards were established in 2000 with the New Zealand Painting and Printmaking Awards commencing the following year. The development of these awards has contributed significantly to the contemporary art landscape in the Waikato region and nationally, and has also given the WSA a platform to extend their activities.

As the strength of any voluntary organisation lies in its members, the dedication and commitment of many individuals has enriched the visual arts in the community. In this 25 year period WSA has experienced many transformations both in premises and personnel. There have been a number of driving forces whose contribution both to the WSA and wider community has been invaluable.

There have been opportunities for the WSA to present and acknowledge its milestones in the form of several celebration. To be continued....





July 2020

## Member Contribution

Below is an article by one of our lovely WSA members. Printmaker Amanda Williams and her daughter Zoie sharing a print day at home during lockdown.



### Amanda Williams on Print Day in May 2020

Here I was moaning that I couldn't get into the print studio and your gentle rebuke that it was all about printing AT HOME: making do, doing the best with what you have, widening the circle of print makers, made me realise how much I have to be going on with at home.

So on Saturday May 2, my daughter (14) and I got out all the kit and had a look. I forgot I had a box of kids' print making stuff from a holiday club I ran years ago. I asked her what kind of printing she would like to do (it's always good to give her a choice, even if she has no choice about taking part! 'What's not to like about printing!?' She'll enjoy it at some stage or another') and she pulled out the lino and cutting tools.



A couple of days before, we had been for a walk in the park across the road and I had picked up some seed pods (which I still haven't identified). I had thought about printing from their clean sharp edge but I reverted to lino too. She cut straight in without drawing, a mountain. We talked about negative space and the line you cut being white, almost like a negative. She cut two more blocks in the time I took to get my block ready.

Note to self: I don't recommend printing with cats: their fluff gets on the blocks, and they want to do their own printing too.



My daughter chose blue to start, she did a short run and I used up the last of it with a bit of red to make a deep purple. Then with a clean roller and plate we used green. She was done with one print on the second run. I used up the rest of the ink on fabric while she reverted to form: on her Ipad with Minecraft and writing stories. I find it hard to define the line between insisting she participate in craft for life experience and letting her crack on with what she's interested in, but she said afterwards the time was ok, she was pleased with her results and she is happy they are being published in some form.

Thanks so much for the idea. I will certainly do it again: it wasn't too much set up to turn my sewing room into a print studio, and we coped with river cobbles to rub the back of the paper instead of the big press in the Studio.

Thank you, A Williams in New Zealand.



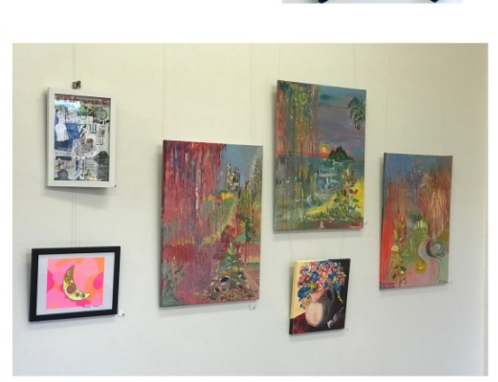
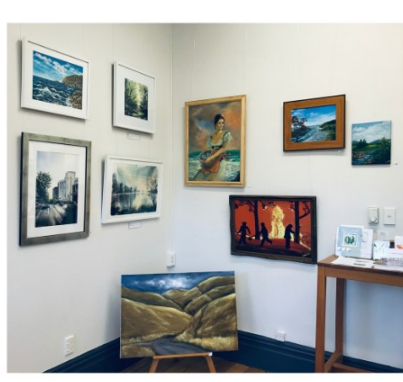
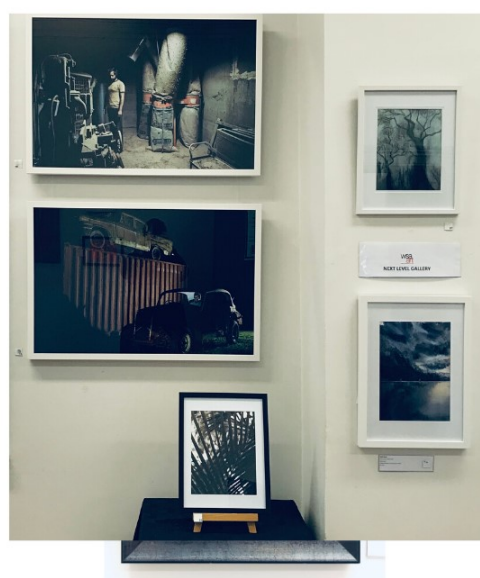
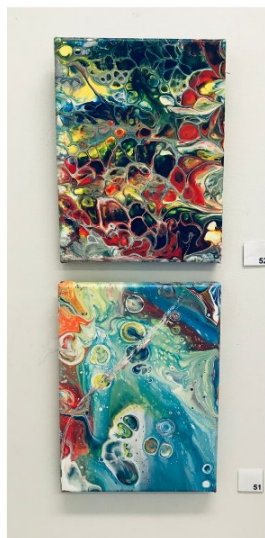


## Next Level Gallery

### Members Exhibition

Our annual Next Level Gallery Members Exhibition ran from June 4th until July 1st. We had a wonderful variety of art on display as you can see by the photos below.

Many thanks also to Junko, Amanda, Carolyn & Geoff who kindly volunteered to hang the exhibition. They did a fabulous job!



### Next on at the Next Level Gallery:

Paulette's 3 Watercolour Classes in a joint exhibition.

**Opening July 2nd 5.30pm -7pm. Exhibition ends on 29th July.**

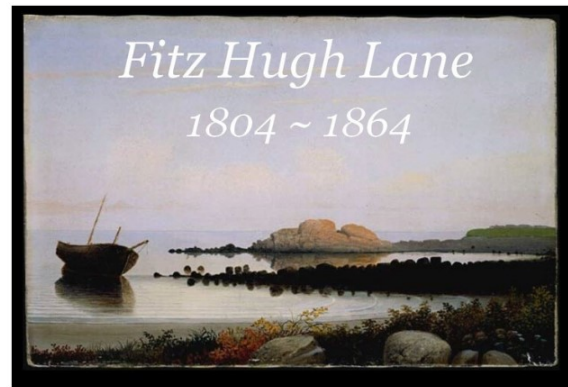


## Haydn's Wistful Musings from the past:

(Fitz Hugh Lane 1804 ~ 1865) Luminism

Barbara Novak in her book - "American painting in the 19th century" describes Fitz as the "most transparent eyeball" referring to the Luminists.

They were artists with a profound sense of realism carefully organized by principles of design.



Luminists saw nature as a manifestation of God's Grand plan. It was to study nature with a depth of feeling. "This was accomplished through a genuine love and understanding of the elements of nature – discernible in the intimate arrangement of leaves on a bough – and their arrangement to reveal the poetry inherent in a given scene." Fitz invites us to view his works as a spiritual experience.

Few could have painted the extraordinary beauty of the azure coasts of New England with the expressiveness and luminosity of Fitz Hugh Lane.



Soon after Lane's death, his work fell into obscurity with the rise of French Impressionism.



It was not till the 1930's that Lane's art was rediscovered, and in today's market will fetch between three to five million dollars.





## In Good Company

Below is a photo of some of our members and untutored students who recently exhibited in Artspost Gallery.

Back row: Delys Lodge, Jane Finch, Ann Harlow.

Front row: Garry Moore, Gillian Bigham, Anne Carter-Jones.



## For hire:

8 interlocking display panels. 1200mm x 1500mm with 2100mm high stands. \$20 per panel, you will need a minimum of 3 to support free standing. Contact the WSA office for more information or bookings.

[wsa@wsa.org.nz](mailto:wsa@wsa.org.nz)

07 8394481



Below is a poem and doll created by  
**Megan McIndoe**

(WSA Member Jane Finch's sister)

This is something she created  
during lockdown about 'Corona'.

### The Age of Corona

She who holds the Covid 19 Orb reigns supreme,  
Eclipsing mankind's power to hold the world in quarantine.

With one microscopic virus she cleared the skies and city streets,  
Imposed the law of social distancing, restricted whom we meet.

Forget your beads and prayers, forget your good luck charms,  
They are as futile as your titles, wealth and arms.

Stay home until she passes if you wish to survive  
For the Age of Corona has arrived.

Megan McIndoe April 9<sup>th</sup> 2020



Please express your interest if you want to exhibit at The NEXT LEVEL GALLERY in 2020.

Email the office at [wsa@wsa.org.nz](mailto:wsa@wsa.org.nz)



## WSA Tutor Workshops

Over the next couple of months we have some fabulous workshops on offer from our experienced WSA tutors. From Japanese woodblock printing with Sybille, Palette Knife (online) with Geetanjali & Watercolour negative painting or flowers with Paulette. Contact details, dates & fees are on each poster.

COME  
PAINT  
ALONG  
WITH  
GEET

Palette Knife Painting

Online class Via ZOOM

3 hours with 20 mins break

Price - \$50 (material not included)

Saturday 18 July, 9:30 am to 12:30 pm

Enrol to reserve your spot TODAY!

Mob: 0272977581

SATURDAY 11TH JULY  
9AM - 12PM

## WORKSHOP

**FOUNDATION \$60**  
**DRAWING** Includes Materials

wsa@wsa.org.nz

07 8394481

www.wsa.org.nz

wsa  
art  
WAIKATO SOCIETY OF ARTS

## Still Life Drawing WORKSHOP



SATURDAY 11TH JULY

1.30pm -  
4.30pm

**\$60**  
Inc  
materials

wsa@wsa.org.nz  
07 8394481  
www.wsa.org.nz

wsa  
art  
WAIKATO SOCIETY OF ARTS

SATURDAY 18TH JULY  
9AM - 12PM



**\$60**  
Inc  
materials

## ACRYLICS WORKSHOP

wsa@wsa.org.nz  
07 8394481  
www.wsa.org.nz

wsa  
art  
WAIKATO SOCIETY OF ARTS





## Ukiyo-e Workshop

My lockdown project inspired me to a workshop I would like to offer. Mokuhanga (Japanese woodblock printing) is best known for the "images of a floating world" (ukiyo-e prints) of the Edo period. During lockdown, I carved and printed a copy of the Hokusai print "Orange Orchid".

Traditionally, copying a print is common practice in Japan. The originals were commissioned by a publisher, who would choose a designer (artist), carver and printer to work together on the execution. Following this tradition, modern day publishers still work with carvers and printers to recreate ukiyo-e as well as contemporary prints.

In this workshop, which has the aim to introduce you to the traditional technique of mokuhanga, you are provided with a block that carries the design for a three-plate traditional ukiyo-e print.

The first two days we will spend with carving and learning about the different cutting methods, timbers and registration marks. The third day is dedicated printing day.

This is a process-based workshop, and additional plates for printing will be available.



Image provided by rawpixel, id 262055 : Sparrows on snowy berry bush by Ohara Kosen (ca. 1877-1945)

PS: this is not the print we will be making in the workshop. You can also see that this one consists of 6 plates.

For further questions, please contact the office or me directly, [sybille.schlumbom@gmail.com](mailto:sybille.schlumbom@gmail.com).

**Fri 10th  
Sat 11th  
Sun 12th  
July**

**10am -4pm  
\$270 for the 3 days  
[wsa@wsa.org.nz](mailto:wsa@wsa.org.nz)**

**wsa  
art**  
WAIKATO SOCIETY OF ARTS

**10am - 3pm**

**WSA & Paulette Bruns are  
excited to bring you...**

## Watercolour Workshops

# 2020

**Sunday 9th August**

### *NEGATIVE PAINTING*

Negative painting in watercolour is a unique, layered & beautiful technique that showcases the transparency and luminosity only watercolour can. Suitable for all levels.



**\$90**  
each  
workshop

**Includes  
All Materials  
Tea/Coffee/Biscuits  
8 Students Maximum**

Email: [paulettebruns2@gmail.com](mailto:paulettebruns2@gmail.com)  
or text or call Paulette 0211629545

**Sunday 20th Sept**

### *PAINTING FLOWERS*

Learn the finer details to paint beautiful realistic flowers including glazing, texture, multi tonal blending, shadow/highlight placement, leaves, stems & water droplets. Suitable for all levels.

**wsa  
art**  
WAIKATO SOCIETY OF ARTS



WAIKATO SOCIETY OF ARTS

## STUDIO HIRE & BIRTHDAY PARTIES

contact [wsa@wsa.org.nz](mailto:wsa@wsa.org.nz) for more info  
or 07 839 4481 or [www.wsa.org.nz](http://www.wsa.org.nz)

If you would like to hire one of our studios for a Birthday Party, run a workshop, have a meeting or anything else where you need a space; then contact our office to see what we can do to make it work for you.

Our parties can be run by us; you can choose from several themes or we can follow what you would like & you can supply your own materials. Generally they run for 1-2 & half hours depending on age.

If you are holding a workshop or a meeting we have several options along with a digital projector available for use. We can accommodate most requests day or evening.





# Calendar of Events and Exhibitions



School Holiday Programme	Monday 6th July –17th July
Ukiyo-e Workshop with Sybille	10th July—12th July
<b>Term 3 Starts</b>	<b>Monday 20th July - (9 weeks)</b>
ARTSPOST Members Exhibition	Entries Close Friday 24th July
National Youth Art Awards	Entries Close Monday 27th July 11.59pm
NZPPA Awards—Entries Close	Friday 7th August @ 11.59pm
NYAA	Finalists notified by 10th August
ARTSPOST Members Exhibition	7th August—7th September
NZPPA Awards—Finalists notified by	Monday 24th August by 4pm
Waiprint Entries Close	2nd September
NYAA & Waiprint Exhibition	11th September—12th October
NZPPA Opening & Prize giving	Friday 2nd October @5.30pm
<b>Term 4 Starts</b>	<b>Monday 5th October (8weeks)</b>
NZPPA Judges Talk	Saturday 3rd October @10am
PCANZ Talk	Saturday 3rd October
NZPPA Exhibition	3rd October—5th October

## NEXT LEVEL GALLERY - CALENDAR

NLG Paulette's Watercolour Classes Exhibition	2nd July—29th July
NLG Nici's Class Exhibition	30th July—12th August
NLG Life Members Exhibition	13th August-22nd August
NLG Vivien's Class Exhibition	23rd August—6th September
NLG Ruth Davey Print Exhibition	10th September—7th October
NLG Peter Garland Exhibition	8th October—28th October
NLG Felipe Queriquelli Exhibition	29th October—11th November
NLG Ellie's 13-18 year olds class Exhibit	12th November-25th November
NLG Carril & Dudri's Exhibition	26th November—2nd December
NLG Xmas Cash & Carry Exhibition	3rd December-16th December



We would like to thank our sponsors for their support of the WSA.



## THE PHILIP VELA FAMILY TRUST



Hamilton City



TRUST WAIKATO  
TE PUNA O WAIKATO



Sir John Logan Campbell Residuary Estate





July 2020

# ART ESSENTIALS



**SALE**

**ONLINE  
& INSTORE**

**385 ANGLESEA STREET  
HAMILTON**

**Gordon Harris**  
THE ART & GRAPHIC STORE

[www.gordonharris.co.nz](http://www.gordonharris.co.nz)

SALE ENDS 31/08/20

## FROM THE EDITOR –PAULETTE BRUNS

This WSA Art Connections Newsletter could not be created without contributions from members. If you have articles you think suitable for our newsletter, please let me know.

A very special thanks to **SHARP**, who continue to help us substantially with printing, and Warehouse Stationery, corner Ward and Anglesea

## NEWSLETTER ADVERTISING RATES

### A GREAT WAY TO SUPPORT THE WSA

Inserts \$80 per page (printed and delivered to WSA)  
Full Page \$240 (available only if space available)  
Half Page \$120 colour  
Quarter Page \$70 colour  
Opportunities and exhibitions and Member's short ads – up to five lines are free.



warehouse  
stationery

# SHARP

## Be Original.

### WSA OFFICE AND ART SCHOOL

120 Victoria Street, above ArtsPost Gallery  
PO Box 1018, Hamilton 3240, Phone 07 839 4481

Mo - Fri , 8.30am - 4pm

[artschool@wsa.org.nz](mailto:artschool@wsa.org.nz) for art school

[wsa@wsa.org.nz](mailto:wsa@wsa.org.nz) for all WSA enquiries

Website: [www.wsa.org.nz](http://www.wsa.org.nz)

Editor: Sybille Schlumbom

### WSA EXECUTIVE COMMITTEE

Patron:	Joan Fear
President:	
Committee:	Michelle O'Brien Mark Dyer Nicholas Wells Melany Sutherland Gemma Reid
Treasurer:	Rachael Hayton
Hon. Solicitor:	Charlotte Isaac
Hon. Secretary:	Julie Johnstone