



Happy New Year and welcome back.

It's hard to believe that we are already at the end of January 2020. I hope you have all enjoyed your summer so far and are looking forward to a creative year, whatever form that may take. We have a number of interesting artist talks coming up in February and March, alongside new exhibitions in our Next Level Gallery and Saturday workshops. Please have a look inside for details of these and make sure to register so you don't miss out. As a member of the WSA, the artist talks are free and the workshops are discounted, so take advantage of these benefits please. One of the exciting additions to our school calendar are the new tutors that have joined, to give more variety and compliment the highly skilled and dedicated team of tutors we have here at the WSA, we are very privileged to have all these talented artists tutoring our students of all ages. Make sure to book a class, try something new, and support these hard working professionals, without our tutors our school would not have such a high standing reputation.

As a member and friend of the WSA please pass the word on about our Next Level Gallery, this is one of the few places in the Waikato where the commission is almost half of what other galleries charge, which means more of the sale proceeds go to the artists.

On a more serious note, if you have been in the Wuhan, China area and have recently returned to New Zealand we have had some of our students responsibly put themselves into a two week quarantine period at home and would hope that anyone else that is unsure about their current health status would do the same for the protection of others. Thank you in advance.

Please drop in to the office if you are passing by, if you need any information or would like to see something new happening at the WSA, we are always open to new suggestions.

On behalf of the Executive thank you for your ongoing support and we look forward to another year of being involved in your community.

Julie Johnstone

New Tutor Profiles

Zhe Li - Zhe Li has a BA in Painting (2012 Arkansas Tech University), MFA in Painting (2015 Academy of Art University) and Communication Design (2019 University of Waikato). Zhe has taught art in China and San Francisco for children.

Zhe Li teaches our Saturday classes-Mixed Media 10-14 years, Still Life and Portrait Drawing for all ages and Acrylics.

Dudri du Preez When I do art with children I enjoy using their interests for inspiration, I give them open-ended activities where they can be free to create their own original artworks. We learn new skills and we have so much fun. I enjoy getting messy and bring all sorts of learnings through art!

Dudri teaches our Monday pre-schoolers with Parents class.

Danbee Park - Danbee graduated with a BA Fine Art degree (First class) in Seoul, and recently finished MA Art and Visual Culture at University of Westminster in London. I have been teaching botanical watercolours, ink wash painting to both children and adults for nearly a decade. What I focus on in my teaching is sharing passions and to encourage any hobbyist to become an individual artist by their own definition. I love to have fun with students and believe that anyone can paint if they only try.

Danbee teaches Tuesday evening with Introduction to oriental Painting and on Friday, Ink Drawing and Painting - this is not for beginning artists as well as Art After School for 5-7 year olds

Debsy Gillespie - Debsy has just joined us and is teaching Art in Pastels on a Monday morning. When she first fell in love with portraiture at age 16, intuitive artist Debsy accepted without question, as children do, that it was not herself that painted but spirit that directed her hand and eye. Since then she has watched many times in wonder as the inner spirit of a person or flower or tree is revealed and their true colours unfurled. She regards herself as a mirror to the inner spirit and now has complete trust in what is revealed. Debsy was born in London and travelled extensively during her childhood and youth, she was always fascinated by the local art. She studied Fine Art at Reading University, UK, where she specialised in the feeling effects of colour.

NZ Painting and Printmaking 2020

NEW ZEALAND PAINTING AND PRINTMAKING AWARD 2020

We are pleased to announce that Julia Waite has been appointed as the Judge for our 2020 NZPPA. Julia holds a Bachelor of Arts (First Class Honours) from the University of Otago (2005), a Masters of Museum and Heritage Studies from Victoria University (2009) and a Masters of Arts (First Class Honours) from the University of Auckland (2017). Julia is currently the Curator of New Zealand Art at Auckland Art Gallery Toi o Tāmaki. We are very pleased to have Julia on board and believe her expertise surrounding New Zealand art is well aligned with the demands of the award - to be knowledgeable on both paint and print.

The dates surrounding the NZPPA have been slightly adjusted in an effort to move the award away from the Christmas holiday period.

Entries open on the 12th of March 2020

Entries close on the 9th of April 2020



Award ceremony date is 22nd May 2020 @5.30pm, held at The Atrium, Wintec, Hamilton.

Exhibition hours are 9am—5pm daily.

The award entry form is available now on our website: www.wsa.org.nz

We are pleased to confirm that the Vela Family Trust is once again the chief sponsor of the award, providing our main cash prize of \$20,000NZD.

\$2000 Ruth Davey Merit in Printmaking Award

\$1000 Print Council Aotearoa of New Zealand

\$1000 Wintec Media Arts Merit in Painting Award

\$500 People's Choice Award's from Gordon Harris

Thank you also to Wintec for joining us once again as our chief partner, hosting the NZPPA in your stunning venue, The Atrium.

Finally we are pleased to announce our convenor for the 2020 NZ Painting and Printmaking Award is Laree Payne (Director of Weasel Gallery, Hamilton).



A colourful morning with artist Evan Woodruffe



Join Evan for a thoughtful, fun discussion around the importance of colour in his work and in our daily lives.

Evan Woodruffe (b.1965) brings the extraordinary into the ordinary. Whether on a wall or a luxury motorcar, his paintings sing with colour and vibrating patterns. Writer Lucinda Bennett referred to these works as Wet Maps, "living, breathing ecosystems, and visualisations of a new kind of urbanism", where the world itself is fluid and porous.

Based in Auckland and with regular exhibitions nationally, Evan has exhibited across the wider Asia-Pacific region since 2014, and collaborated with car brands Jaguar Singapore and BMW Australia, and with designers and performers to take his imagery off the wall and into the world.



**10.30am to midday
Saturday 15th February 2020**

**Waikato Society of Arts
120 Victoria Street, Hamilton**

Entry \$ 5.00 Free for WSA Members.

RSVP essential at wsa@wsa.org.nz or phone 07 839 4481

Materials & Techniques Workshop



Brush Selection, Use, & Care

In this hands-on workshop, you will experience how different brush shapes, fibres, and sizes directly inform your painting and expand your paint vocabulary.

Your brush is your main painting tool, carrying colour to your painting surface and distributing it as you wish – or are able! As a chef has their knives, each matched to a specific method, so artists have their brushes. Each type of fibre is suited to specific media and technique, and each shape has been developed for particular painting methods.

This workshop will exhibit three main fibre types and match these with different paint media. Brush shapes will be matched to historical developments in painting, and variations on these brush shapes discussed. Brush handling techniques will be covered, as will how to make your brushes last many years of use.

1pm to 5pm Saturday 29th February 2020

Waikato Society of Arts, 120 Victoria Street, Hamilton

\$ 50.00 WSA Members or \$ 60.00 per person – includes all materials

Bookings essential at wsa@wsa.org.nz or phone 07 839 4481



Your tutor is Evan Woodruffe, well respected for his in depth technical knowledge, with over 30 years' experience of professionally researching artists' materials. Evan (MFA 1st Class) has exhibited extensively here and overseas. His exhibition history can be viewed at www.evanwoodruffe.com



Materials & Techniques Workshop



Traditional & Unusual Surface Preparation

This hands-on workshop explores the diverse range of grounds available today, and provides an understanding of how surface preparation is fundamental to great painting.

Proper attention to your painting surface is essential, as everything that follows relies on it: for proper adhesion, optical properties, and paint application. It is both easy and involves crucial decisions about the final outcome.

This workshop teaches proper preparation of paper, canvas, wood, metal and plastic for painting with acrylic and oil colour. As well as the traditional primers, such as gesso, you also see the results from modern preparations that offer more unusual surfaces: hard, soft, absorbent, non-absorbent, rough and smooth.

1pm to 5pm Saturday 15th February 2020

Waikato Society of Arts, 120 Victoria Street, Hamilton

\$ 50.00 WSA Members or \$ 60.00 per person – includes all materials

Bookings essential at wsa@wsa.org.nz or phone 07 839 4481



Your tutor is Evan Woodruffe, well respected for his in depth technical knowledge, with over 30 years' experience of professionally researching artists' materials. Evan (MFA 1st Class) has exhibited extensively here and overseas. His exhibition history can be viewed at www.evanwoodruffe.com



Artyfacts from Haydn

Touring with the Fantin- Latours: 5 “Mrs Fantin- Latour”

Victoria Dubourg (1840 ~ 1926) painted still life so similar to her famous husband Henri they can be hard to know whose is what! They both met at the Louvre while doing copies of the great masters. Ten years later they were married.

Their friends – Edouard Manet, Berthe Morisot and Edgar Degas noticed that the shy and reclusive Henri had changed for the better!

Victoria was already painting flowers before her husband came along so they made a great team. She always signed her paintings “ V Dubourg.”



Victoria by Henri



After her husband's death in 1904, Victoria organized exhibitions and a catalogue of Henri's paintings.



These “yellow roses in a vase” are for sale at Christies. Be in quick. Only \$29,000.

New Classes — we have some great new classes starting this term.

Here are some examples. Enrol now to secure your spot.

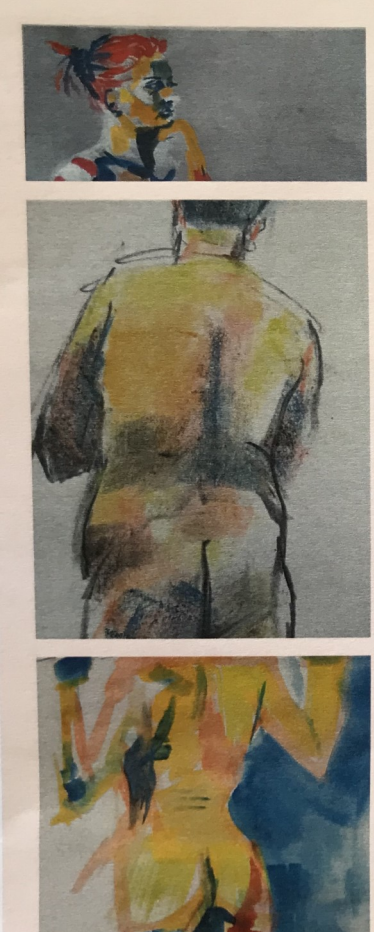


TERM ONE 2020

LANDSCAPE IN OILS

Work with new WSA tutor,
Susannah Salter, to find a fresh
way of working with oil paint.
Beginners welcome.
Waikato Society of Arts,
Hamilton
12.30-14.00
13 February - 9 April

Booking essential, contact
wsa@wsa.org.nz

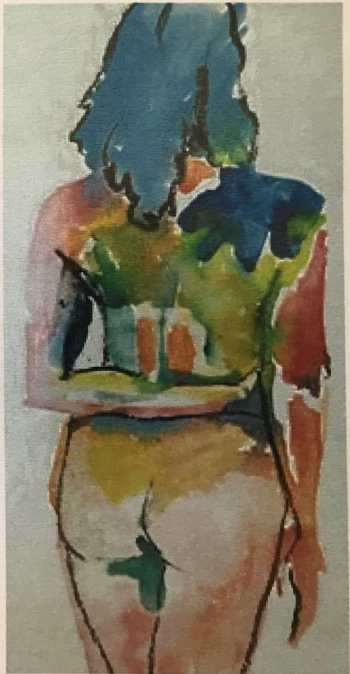


*Explore techniques that
capture the figure.
Enjoy dynamic colour and
mark making with a variety
of media and professional
life models.*

**Painting from
Life**

with Susannah Salter

Waikato Society of Arts
Victoria Street, Hamilton NZ
wsa@wsa.org.nz
Thursdays 10.00-11.30am
13 February to 9 April 2020
Booking essential.



Saturday – 12.30pm – 2.30pm – 15th February to 4th April**Still life and portrait drawing for beginners**

Observation is one of the most important skills in still life drawings. Still life drawing helps students to observe the shapes and forms of the objects. After moving to the portrait, students will learn how to draw facial features from the eyes to the mouth. The course will provide an opportunity for people of all abilities, specific to beginners to develop their drawing skills.

Material list

- *Pencil
- *Eraser
- *Drawing papers
- *Drawing board
- *Easel

Mixed Media 10-14 years – Saturday – 9.30am – 11.30am – 15th February to 4th April

With Zhe Li



Mixed media art involves mixing two or more different mediums to create art works. Students can explore and express themselves by using different media or materials. For example, students could use markers to instead of brushes on their paintings to create their own art works.

INK DRAWING & PAINTING WITH DANBEE PARK

FRIDAY 9.30AM-11.30AM

14 FEB – 3 APRIL (8WEEKS)

Aim: This class is designed to develop drawing skills using Oriental brush instead of other drawing materials.

In terms of drawing, course would be suitable for learners who understands how to sketch plants or natural objects such as mountain, forest, trees and so on.

Materials: small to fine pinpoint type of any Asian brush, watercolour brush that has thin tip point, pencil, eraser, water bucket, old tea towel, paper towel to dap and wipe, round plate with smooth rim (as a pallet), a saucer.



Class will focus on ink and water cooperation onto various papers including mulberry paper, watercolour paper or sketchpad. Experimental on different papers using Asian ink would broaden techniques of ink wash painting; tonality and shading achieved by varying the ink density as well as speed and pressure within a single stroke.



Oriental Painting and Ink Art

Learn the traditional Oriental brush painting.
This term will be taught a basic skills for brush control &
Techniques with ink and colours.
Join this therapeutic brush art!
Class is suitable for beginner and experienced artists.

Tutor Danbee Park

Tuesday 11th February - 6pm-8pm -8 Weeks

WSA, 120 Victoria street

To resister or for more information

artschool@wsa.org.nz /07 839 4481

Acrylics Saturday 3pm—5pm 15th February to 4th April

with Zhe Li



This acrylic painting course is designed for beginners with an interest to learn how to paint in acrylics. Students will learn how to get started painting in acrylics. The goal for this class is to complete a landscape painting at the end of the course. Students will learn the basic equipment to use for acrylic painting; the basic primary colour palette to use for landscape painting and the differences between acrylic paint and oil paints.

Pre School with Parents Art Classes

Monday 1pm – 2pm – 10th February – 30th March

Tuesday 1pm – 2pm – 11th February – 31st March

Friday 1pm – 2pm – 14th February – 3rd April

Colin Gibbs—Artist Talk

The art of conceiving and birthing a painting

Painting, of the kind that I am familiar with, is an intensely private and an intimately personal experience. What the painter produces in the studio is simply a painting. When a painting is hung on the gallery wall, it begins as no more than a painting on a gallery wall. It is not a narrative of the artist's entanglements of anxieties, tensions, heartaches, joys, securities and insecurities, technical limitations, and emotions. It is simply a painting.

When others view the painting, however, it is then that it becomes art. They describe it in terms such as 'good', 'bad' or 'interesting'. Put simply, the artist's public credibility critically depends on viewers' responses—but the artist's private credibility relies on their integrity as they see themselves living authentically within the artistic process.

This talk reveals the inner world of one artist, striving to be authentic to himself while also dealing with the complex technicalities of painting media. His self-journey in multiple environments is explored as he responds to what he sees as the urgency, the conception, the labour pains, and birthing of a painting.

In Good Company by the Monday Group

20 March 2020 – 20 April 2020

The Monday Group is a circle of diverse Waikato artists who gather together to create, design, paint and assemble works of art, each from their own experiences of life. All the artists in this Waikato Society of Arts (WSA) group have exhibited widely and have works in New Zealand and overseas collections.

Featuring artists:

Gillian Bigham, a figurative artist of renown, has exhibited her oil paintings and sculptural works over many years.

Anne Carter-Jones has been selected twice for the New Zealand Painting and Printmaking Awards (NZPPA). Anne has a unique approach to her various subjects using mixed media.

Jane Finch, a long-time WSA tutor, is a landscape artist of acclaim. Jane's work focuses on her life experiences.

Ann Harlow, painting in oils, searches for intimate studies of life and landscape in her travels around the world.

Delys Lodge tutored in watercolour for the WSA over 19 years. She is a master painter of Botanicals and contemporary landscapes.

Garry Moore has been a Renaissance artist bordering on the Romantic since his years in Europe.

Jan Kaywood, an award-winning artist, is captivated by people moving around their cities, always apart from one another, anonymous.



Wallace Gallery Morrisville this February:

Art Chat

with exhibiting artists Karin Barr & Sybille Schlumbom

Thursday 20th of February, 10:30am

Refreshments provided

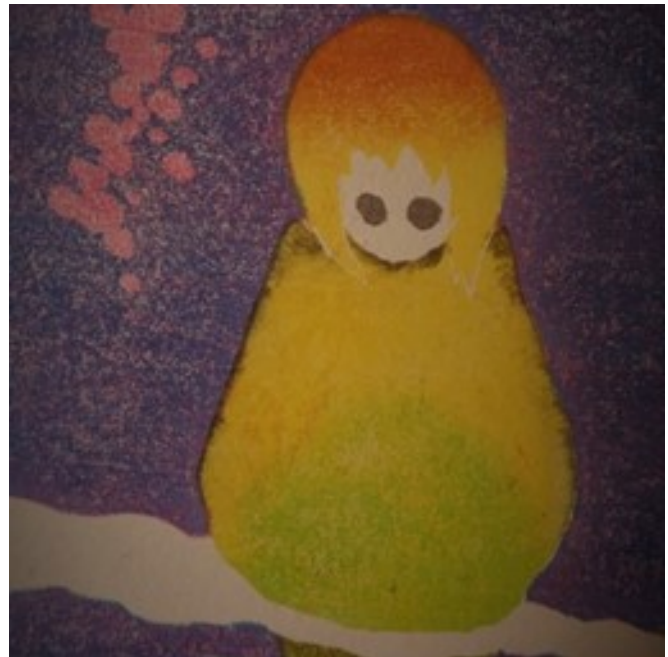
Gold coin donation

MOKUHANGA MANIFESTATIONS

BY SYBILLE SCHLUMBOM

Community Gallery

1st February - 1st March 2020



Sybille Schlumbom. Japanese woodblock print using watercolour on washi paper.

A mix of traditional Western prints with Eastern mythology, folk tales and beliefs. Yōkai are natural spirits or manifestations of fear like the Celtic water horse or the old German “Kornmuhme” (aunt-in-the-grain), both used to scare children and keep them away from real dangers by using imagined ones. So, why would this work?

Depending on who tells the story, yōkai are monsters or spirits, not really ghosts, as they have never lived. If you are familiar with Hayao Miyazaki's *Spirited Away*, you are familiar with yōkai, as they are the customers of the bathhouse Chihiro works in to save her parents.

Sybille likes playing with ideas of how certain incidental or even tragic events might manifest as yōkai-terms, using her “yōkai” to give a face to urban fears, vanishing species and her own unspecific feeling of misplacement.

WAIKATO SOCIETY OF ARTS

JOIN AS A MEMBER FOR 2020

BENEFITS include:

ENTRY INTO ANNUAL EXHIBITIONS

ARTIST PAGE ON WSA WEBSITE

MONTHLY NEWSLETTER

FREE ARTIST TALKS

DISCOUNTED WORKSHOPS

DISCOUNTED ART CLASSES

DISCOUNTS AT LOCAL BUSINESSES

EXHIBITING IN OUR NEXT LEVEL GALLERY.....



WAIKATO SOCIETY OF ARTS

Calendar of Events and Exhibitions

**Term 1 Classes start**

NLG Colin Gibbs

Evan Woodruffe

NLG Caroline Peacocke –Printmaking

NLG Haydn's Acrylic Class

Felipe's Exhibition

Monday 10th February 202013th February @ 5.30pm - Opening & Artist Talk.
Exhibition runs 13th Feb — 28th Feb.

15th February –Artist Talk @ 10.30am

Materials + Techniques Workshop 1-5pm

29th February—1-5pm

Brush Selection Use & Care

Monday 2nd March

Thursday 19th March

3rd April

We have a range of sizes, in new and second hand frames, for sale in the WSA office if you're needing any for children's art work or a special piece you've just finished.

**STUDIO HIRE AND BIRTHDAYS AT WSA**

If you'd like to hire one of our studios for a Birthday party or to run a Workshop, have a meeting or anything else where you need a space then contact our office at wsa@wsa.org.nz or 07-8394481 to see what we can do to make it work for you.

Our parties can be run by us, you can choose from several themes or we can follow what you'd like and you can supply your own materials. Generally they run for 1 - 2 ½ hours depending on age.

If you're holding a workshop or a meeting we have several options along with a digital projector available for use.

We can accommodate most requests any day or evening.

Follow us on: Facebook: <http://www.facebook.com/waikatosocietyofarts>
Instagram: <http://www.instagram.com/artwaikato>

**Please express your interest if you want to exhibit at the NLG in 2020.
all or email the office at wsa@wsa.org.nz or 07 - 8394481**

our Biggest

SALE

ONLINE & INSTORE
385 ANGLESEA STREET
HAMILTON

up to 40% off art supplies

Gordon Harris
THE ART & GRAPHIC STORE

www.gordonharris.co.nz

SALE FROM 11/02/20 TO 30/03/20

FROM THE EDITOR –PAULETTE BRUNS

This WSA Art Connections Newsletter could not be created without contributions from members. If you have articles you think suitable for our newsletter, please let me know.

A very special thanks to **SHARP**, who continue to help us substantially with printing, and Warehouse Stationery, corner Ward and Anglesea

NEWSLETTER ADVERTISING RATES

A GREAT WAY TO SUPPORT THE WSA

Inserts \$80 per page (printed and delivered to WSA)
Full Page \$240 (available only if space available)
Half Page \$120 colour
Quarter Page \$70 colour
Opportunities and exhibitions and Member's short ads – up to five lines are free.



warehouse
stationery

SHARP

Be Original.

WSA OFFICE AND ART SCHOOL

120 Victoria Street, above ArtsPost Gallery
PO Box 1018, Hamilton 3240, Phone 07 839 4481
Mo - Fri, 8.30am - 4pm
artschool@wsa.org.nz for art school
wsa@wsa.org.nz for all WSA enquiries
Website: www.wsa.org.nz
Editor: Sybille Schlumbom

WSA EXECUTIVE COMMITTEE

Patron:	Joan Fear
President:	
Committee:	Kate Symmans Michelle O'Brien Mark Dyer Nicholas Wells Melany Sutherland Gemma Reid
Hon. Treasurer:	Rachael Hayton
Hon. Solicitor:	Charlotte Isaac
Hon. Secretary:	Julie Johnstone