



Art Connections

WAIKATO SOCIETY OF ARTS

PO Box 1018 Hamilton 3240 www.wsa.org.nz

Welcome to our December newsletter

It has been nice to see a few of our adult students and tutors back in art classes as we navigate the new rules around vaccination certificates, traffic light levels and safety for all who come into the WSA. Thank you to everyone who has communicated positively, regardless of the effects this may have on them coming to art classes or to see or participate in any exhibitions.

We now have our Online Exhibitions loaded into our WSA website. This gives people the opportunity to look at what exhibitions we currently have running and purchase art online, to be couriered out to them or to collect at the WSA, by arrangement. Take a look and support our artists, by supporting local work and buying some artwork for friends and family, for Christmas and other special events. Currently our annual Cash and Carry and Monica Schinkel's exhibitions are showing. The other good news is our People's Choice winner from the Members exhibition, Melissa Hill, has her work online, for sale, called Closer to Home. Congratulations, Melissa on receiving a one year free membership to the Waikato Society of Arts.

Looking ahead to 2022, we have a busy first few months. Waiprint is opening on January 13th, at ArtsPost. This was delayed from its original date of September 2021. If you are in Hamilton, please come along and support our Waikato Printmakers, their work is outstanding and always presented with great care. Straight after the Waiprint exhibition, we have the National Youth Art Awards opening on February 10th. The 47 finalists are from throughout New Zealand and range from 13 year olds to 25 year olds. The talent is outstanding and we are all looking forward to seeing this exhibition. Our generous sponsors have committed to supporting these Awards, even through the delay of Covid which prevented this from taking place alongside Waiprint in 2021. Without our long time sponsors, Midland MRI, PCANZ, Gordon Harris Art Supplies and Fusion Print, as well as more recently, Brian Perry Charitable Trust, Forsyth Barr, CFO Partners, Surgeons4Health, Chow Hill, the Quested family and Aly Timmings we would not be able to continue offering this much anticipated award for these aspiring New Zealand artists. The judges for the NYAA are James Ormsby and Diane Scott, both with their own practices and high skill sets in the art world. We appreciate their time and energy in committing to the judging process which has been delayed longer than first planned. The NZ Painting and Printmaking awards entries will close on February 7th, 2022 and we eagerly await the Opening and Awards evening in April at the Hamilton Garden's Pavilion. This prestigious award is a highlight for us to host and we feel privileged to continue this with new sponsors supporting the main prize, of \$20,000, from the Philip Vela Family Trust, who had generously supported this award for the past twenty years. Our special thanks to the Vela family, their support for NZ artists has been amazing. Our sponsors this year are Nancy Caiger, Golden Homes, PCANZ, Ruth Davey, Gordon Harris Art Supplies, Chow Hill, Kim Maley & Jenny Ferneyhough, Susie & Cliff Allen (Bustle), Graham & Elizabeth Robertson, Jane Finch and Fusion Print. Please, where you can, support these generous businesses who support our artists from around New Zealand. Dr. Ed Hanfling will be judging the entries and choosing the finalists for this award. This is a long process, with many entries to go through and we appreciate his expertise in both painting and printmaking.

On behalf of the Executive, we wish you a safe summer break. We hope you get to reconnect with friends and family you may not have seen for a long time. Have a Merry Christmas and a great start to the New Year. We look forward to seeing you all back at art classes, attending our exhibitions, workshops and even borrowing a book from our library. To our tutors and volunteers, thank you for your flexibility over this long year and thank you for your continued support of the WSA and Art School.

You are never too old to set another goal or dream a new dream. – C.S. Lewis

Julie

Help us thrive!

Join **CommUnity** and choose us as
your **CommUnity Group** to support.

CommUnity
turning commerce
into community

www.comm-unity.kiwi

Covid 19 Information

New Zealand will be moving to a new **Covid-19 Protection Framework** (traffic light system) that introduces a 3-level approach to managing Covid-19.

As a part of the new framework, if we want to stay open, at all levels, we will need to use **My Vaccine Pass** for staff, members, students and visitors.

The Waikato Society of Arts has decided that we will move to operate under the Covid-19 Protection Framework, as soon as it is in place, so we can remain open at all stages. Not only is this in the best interests of our members, students and visitors, as we can continue to offer our services, but it will also ensure a safe environment for our staff. This means all WSA staff, tutors, contractors and visitors over the age of 12 will need to be fully vaccinated when the Waikato region moves to this new system on December 3 2021.

If you are vaccinated, you can register on **My Covid Record** and request a vaccine pass. This pass is valid for 6 months. Further information is also available on the website about options if you are exempt from vaccination, require a physical copy of your vaccination pass or are aged 12 - 16 years.

Those who have not been vaccinated yet, and intend to, are encouraged to do so as soon as possible so you can continue to come into the WSA and our Art classes.



Davey Donation to WSA Library

When Lester Davey recently downsized his accommodation, he and Ruth gave the WSA Library almost 150 of their art books. These have now been added to the collection and are available for study and inspiration. Subjects include famous artists, art movements, museums and exhibitions. There are also practical volumes on colour, drawing and illustration. Previously, Ruth had given more than 100 of her printmaking books to the WSA Print Rooms library, where they enhance the reference collection used by the printmaking classes.

Attention, Printmakers!

As we go to press, the WAIPRINT 2021 exhibition has been postponed and is scheduled for January / February 2022. Printmakers, please note these important dates:

17 December: all entries – forms AND prints – due in WSA office. (In case of further lockdown restrictions, please contact Janice to organise getting your work into the system.jmeadows51@gmail.com)

13 January: 5.30 opening

14 January—7 February exhibition in Ida Carey Gallery, ArtsPost

22&23 January: 'Print Outside the Box' workshop with Gemma Reid in WSA Print Rooms

8 February: exhibition comes down and unsold work to be collected from the office

The latest entry form (rev4) is on our website or see the link below:

<https://wsa.org.nz/wp-content/uploads/Waiprint-2021-entry-form-4th-rev-15-Nov.pdf>

Please keep an eye on the WSA website for any further ructions due to Covid-19.



CommUnity is a fund generating program that provides ongoing, untaged funding to our local Kiwi communities. When a CommUnity Member (shopper) makes a purchase at a registered CommUnity Merchant (shop), a percentage of each transaction goes to the Members selected CommUnity Groups.

Make sure to select us as one of your chosen CommUnity Groups!



Member News

These beautiful quilts are currently for sale online in our annual Members Xmas Cash & Carry Exhibition. Below is the fascinating story of how they came about. To purchase go to wsa.org.nz and click on 'Online Exhibitions', then 'Cash and Carry'.

The sale proceeds for the quilts are generously being donated to the WSA.

Outside is Chaos

This quilt began as a 'mystery quilt' project during the August lockdown, designed by Donna Ward (donnasquiltstudio.co.nz) to use up scraps. Every couple of days, the next set of block patterns would arrive by email. Amanda Talsma-Williams used white cotton, scraps from previous projects, hand dyed cottons gifted by Carril Karr and WSA Print Room scraps/off prints. Some of the fabrics therefore are of uncertain provenance and may be polycotton or synthetic. The border is a collage of scraps of compatible colours.

The backing is of two fabrics; a hand dyed twill cotton from Carril, and a patterned Ikea cotton from the UK.

It is lined with wadding, 80% cotton, 20% polyester so it should be machine washable, but best on a cool gentle cycle.

Donna Ward quilted it in September. The quilt is bound in yet more scraps.



Swing/AntiSwing

A picture in a magazine made Amanda Talsma-Williams want to puzzle out the block construction. Her solution necessitated piecing the blocks in pairs, in mirror image pairs. It made her think of the particle theory where particles can have equal and opposing swing. Opposites appear as well in the colour choices.

Fabrics are a mix of scraps from her workshop, hand dyed cottons donated by Carril Karr and offprints from the WSA Print Room.

Wadding is a mix of 80% cotton and 20% polyester so it should be machine washable, but best on a cool/gentle cycle.

The backing fabric is Cook Islands cotton, probably hand-dyed, purchased on a visit in 2014, and the quilt is bound in yet more scraps.

Heather Clark of Studio 60 quilted it during the August lockdown.



Haydns Artyfacts

Looking at dreamy Fra Angelico will help lift our minds from Covid's dreary phobia at Christmas time..

Fra Angelico 1387 ~ 1455

Described by Vasari as having a "rare and perfect talent." His real name was Giovanni da Fiesole but was known as "Angelic Friar" because his example of holy living was the real deal. A cheerful artist who gave to the poor and was the epitome of humility. All his main works are to be seen on the walls and cells of his monastery.

When we look at his Prado Annunciation, possibly the first version he did of three; it is a giant leap forward in the portrayal of figures in a building and perspective.



This is such a lovingly painted subject which has many layers of meaning. Such imagination and creative ideas are there to discover. On the left we see Adam and Eve being ushered out of the Garden of Eden in their shame, yet they walk on a carpet of flowers, some red to denote the Blood of Christ.

A large Palm tree looms also a signal of Christ's sacrifice.

A ray of light from Heaven shines on Mary whose resolve would bring redemption to fallen mankind.

There is the delicate fusion of the pinks and blues, the perfection of the arches and columns of the portico. The perfect folds of the angel standing on an amazing marbleized floor. And what of the Angel's wings, the starry blue ceiling and the little bird perched on the rail?

I have to admit this is one of my favourite paintings of Fra Angelico because it contains both mystery and purity of perfection.

It is said that he never went back to retouch his works as he considered them as paintings guided by a divine hand.

WSA History

We thought it would be nice to put little excerpts into our monthly newsletter about the history of the WSA. The excerpt below is from 'Moves Afoot - A supplementary history of the WSA 1983-2009' by Megan Lyon

The Waikato Society of Arts (WSA) has been a significant part of Hamilton's cultural, historical and community make-up since its inception on 14th August 1934. This was the result of a public meeting convened by two Hamilton artists, Ida Carey and Adeline Younghusband and Dr 'Tim' Rogers, who believed the 'arts should be the heart of life of every town, as a vehicle for the expression of humanity and morality'.



Part 11:

One Hundred Year Anniversary of Artspost Building

Date: August 2001

Location: Artspost

The Artspost building was the focus of almost a month of centenary celebrations which included edible art awards and a display by 16 local artists, using the building as a theme.

70th Year Anniversary

Date: 10 July to 20 August 2004

Three exhibitions;

1. *From the Same Foundation*
2. *The Collection*
3. WSA Members Show - *There and Back Again*

The Action Front: 75 Years of Art from the Waikato Society of Arts

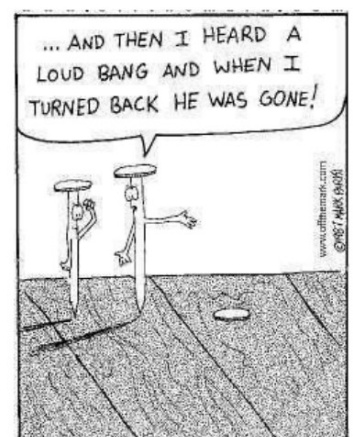
Date: 5 April - 4 October 2009

Location: Waikato Museum

The exhibition takes a 'glimpses over three periods of twenty-five years with some of the key people and highlights of the times.'

(*You can read previous excerpts of WSA history on our website www.wsa.org.nz click on 'news' then any newsletter from August 2020)

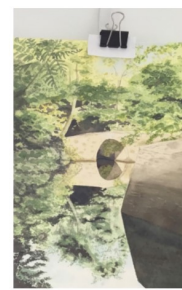
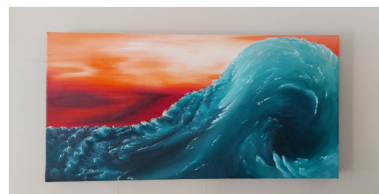
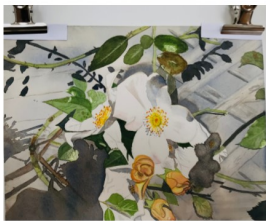
Monthly Funnies



WSA Members Xmas Cash & Carry Exhibition

This years Xmas Cash and Carry Exhibition is able to be viewed on our website 'Online Exhibitions' section. If you are interested in a piece of art please email wsa@wsa.org.nz for more information and ways to pay and collect. There is a great variety of affordable art and other creative items for sale. Available until 31st January unless sold prior.

wsa.org.nz



Free Workshop - (Thank you to the generosity of DV Bryant Trust's Koha)

Purposeful Creativity

All creativity is and can be purposeful in many ways. Indeed, it's nothing new really, perhaps just a reminder.

Making Fidget Activity Mats for dementia patients has been very nourishing to my soul, it's truly satisfying knowing that your creations will bring joy and much needed interaction.

The mats are fabric pieces sewn together incorporating embellishments that can be manipulated and moved eg zips, buttons, ties/ribbons, beads, buckles, different textures, shapes etc. Any leftover bits and pieces in the studio really.

They are especially therapeutic for dementia patients, care homes are in need of them, and appreciation/gratitude on many levels is inevitable.

Twiddlemuffs are also a great idea for knitting and to use up leftover, or new, wool. Just Google 'twiddlemuffs'. This workshop will be run by WSA member and past tutor Dabau Singh-Heer. Bring along your own sewing machine for a morning of fun and creativity with a purpose.

Fidget Activity Blanket workshop

Free to anyone caring for a loved one with Dementia
Limit 10 people per session



FEB AND MARCH 2022 TBC

from 9.30am to 12pm

at the Waikato Society of Arts

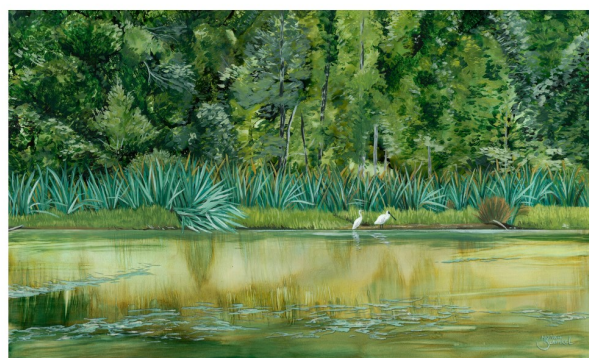
Level 1, ArtsPost Building Victoria St

Kindly donated by the DV Bryant Trust

Book thru wsa@wsa.org.nz

Mavis & Co Rototuna - WSA Exhibition Space

Monica Schinkel's stunning resin coated artworks are still on display until 15th December. Be sure to pop in for a look. It's a great space to relax and enjoy a coffee at the same time.



WSA tutor Sue Burnett follows with her beautiful watercolours on display until 25th January, 2022.



Creative Christmas Gift Ideas

Do you need something creative for a xmas gift or holiday activity?

We have a variety of Art Packs ready to send to you or you can arrange a time to collect from our office.

Or maybe you would like to give someone a WSA gift voucher which can be used for classes, membership, WSA gallery purchases & art packs.

These are also a great replacement for the January School Holiday Programme that we will not be running this time, you can get 3 art packs for the same price as one morning session



email artschool@wsa.org.nz
or purchase online
wsa.org.nz





GIFT CARD

Can be redeemed on:

- Art Classes
- School Holiday Programme
- Art Packs
- Next Level Gallery Art
- Membership

www.wsa.org.nz artschool@wsa.org.nz



Creative at Home Packs

We have been busy creating a range of Art Activity Packs geared mainly towards children & youth, but of course they can be enjoyed by any age group (adults included!).

Each pack includes EVERYTHING you will need to complete the activity eg. Glue, scissors, pencil, eraser, paint, paper etc. They also come with instruction sheets & several packs have more than one activity for different ability levels Easy, Medium, Hard.

The packs are for sale for \$10 - \$12 each or save & buy 10 packs for \$90. You can purchase the packs by emailing artschool@wsa.org.nz or phoning 07 839 4481. Packs can either be collected from the office at the WSA or we can courier for \$9 within NZ. Rural delivery add extra \$3. We plan to add more packs so that you have a great variety to pick from for now and in the future.

Save & buy 10 packs for \$90

COLOURED PAPER ARTWORKS Pack includes everything needed to complete the activity.  www.wsa.org.nz artschool@wsa.org.nz 07 839 4481 120 Victoria Street, Hamilton... \$10	LEARN TO DRAW UPSIDE DOWN Pack includes everything needed to complete the activity.  www.wsa.org.nz artschool@wsa.org.nz 07 839 4481 120 Victoria Street, Hamilton... \$10	DOT PAINTING Pack includes everything needed to complete the activity.  www.wsa.org.nz artschool@wsa.org.nz 07 839 4481 120 Victoria Street, Hamilton... \$10	MANDALA CREATIONS Pack includes everything needed to complete the activity.  www.wsa.org.nz artschool@wsa.org.nz 07 839 4481 120 Victoria Street, Hamilton... \$10
LEARN TO DRAW STEP BY STEP Pack includes everything needed to complete the activity.  www.wsa.org.nz artschool@wsa.org.nz 07 839 4481 120 Victoria Street, Hamilton... \$10	PAPER SNOW FLAKES Pack includes everything needed to complete the activity.  www.wsa.org.nz artschool@wsa.org.nz 07 839 4481 120 Victoria Street, Hamilton... \$10	PAINT A SUNSET Pack includes everything needed to complete the activity.  www.wsa.org.nz artschool@wsa.org.nz 07 839 4481 120 Victoria Street, Hamilton... \$12	CREATE WITH CLAY Pack includes everything needed to complete the activity.  www.wsa.org.nz artschool@wsa.org.nz 07 839 4481 120 Victoria Street, Hamilton... \$12

LEARN ABOUT THE COLOUR WHEEL

Pack includes everything needed to complete the activity.



- Instruction Sheet
- 4 Activities
- Blank colour wheel
- Primary, secondary, tertiary
- Mixing Colours, Warm & Cool
- Paper
- Non toxic paint
- Paint brush
- Colour pencils
- Pencil
- Eraser
- Sharpener

www.wsa.org.nz
artschool@wsa.org.nz
 07 839 4481
 120 Victoria Street, Hamilton...
\$12

WATER COLOUR PAINTING

Pack includes everything needed to complete the activity.



- Instruction Sheet
- Examples
- Paper
- Watercolour paints
- Paint brush
- Black pen
- Pencil
- Eraser
- Sharpener

www.wsa.org.nz
artschool@wsa.org.nz
 07 839 4481
 120 Victoria Street, Hamilton...
\$12

Calendar of Events and Exhibitions



2021

WAIPRINT entries close **Wednesday 1st December, 2021**

Office Closes **Friday 17th December**

2022

WAIPRINT opens **Thursday 13th January, 2022**

NZPPA Entries Close **Monday 7th February, 2022**

National Youth Art Awards (NYAA) **Thursday 10th February—8th March, 2022**

Term 1 Starts (8 weeks) **Monday 14th February, 2022**

New Zealand Paint & Printmaking Awards (NZPPA) **Opens Friday 8th April—14th April, 2022**

Term 1 Ends **Saturday 9th April**

Easter (Good Friday) **Friday 15th April**

Easter (Easter Monday) **Monday 18th April**

April School Holiday Programme **Tuesday 19th April –Friday 29th April**

Anzac Day **Monday 25th April**

Term 2 Starts **Monday 2nd May**

NEXT LEVEL GALLERY - CALENDAR

Xmas Cash & Carry Exhibition **25th November—11th January**
(Possibly 31st January)

Dale Gilmore –'X-ray Exhibition' **3rd February—16th February**

***Can any tutors wishing to have class exhibitions book in with Julie asap.**

WSA EXHIBITION SPACE

MAVIS & CO CAFÉ, BISTRO & BAR — ROTOTUNA

Monica Schinkel **9th November—15th December**

Sue Burnett **15th December—25th January**

Caroline Peacocke **25th January—1st March**

*Please note the changes to some dates above due to Covid Alert Level interruptions. These will differ from previous newsletter calendars. More information is on our website www.wsa.org.nz or email Julie wsa@wsa.org.nz

We would like to thank our sponsors for their support of the WSA.





SALE NOW ON!

LOVE ART

this Christmas with

Gordon Harris
THE ART & GRAPHIC STORE

385 Anglesea st. Hamilton
www.gordonharris.co.nz

Sale from 3/11/21-24/12/21

FROM THE EDITOR – PAULETTE BRUNS

If you have articles suitable for our newsletter, please send these in for approval.

A very special thanks to **SHARP**, who continue to help us substantially with printing.

SHARP

Be Original.

NEWSLETTER ADVERTISING

While we support local artists, we always endeavour to promote our school classes, workshops and WSA activities first.

One of the perks of membership is to advertise, for free, something of your work or upcoming exhibitions up to 50 words, without enlargement or photos.

These are approved before going to print.

WSA OFFICE AND ART SCHOOL

120 Victoria Street (above ArtsPost Gallery)
PO Box 1018, Hamilton 3240
07 839 4481

Office Hours:

Mon- Fri , 8.30am - 4pm

Sat 9.30am-2.30pm

(these may vary under different covid level restrictions, please check in advance)

artschool@wsa.org.nz for art school

wsa@wsa.org.nz for all WSA enquiries

Website: www.wsa.org.nz

Paulette works in the office 20 hours per week, if you need a faster reply please include Julies email

WSA EXECUTIVE COMMITTEE

Patron: Joan Fear

Committee: Michelle O'Brien
Nicolas Wells
Melany Sutherland
Gemma Reid
Gaye Jurisich
Karen Taylor

Treasurer & Chair: Rachael Hayton

Hon. Solicitor: Charlotte Isaac

Hon. Secretary: Julie Johnstone