



WAIKATO SOCIETY OF ARTS

# Art Connections

PO Box 1018 Hamilton 3240 [www.wsa.org.nz](http://www.wsa.org.nz)

Welcome to the August newsletter

Our inaugural Small Sculpture Award was held at blue gallery, with 29 artists exhibiting from throughout New Zealand. Beautifully curated by Gaye Jurisich and expertly judged by Andrea du Chatenier. Congratulations to Louise McRae who took out the First Prize for her work, 'RED'. Our sponsors PAUA Architects, Foster's Construction and CFO Partner, Rachael Hayton made this possible from the first idea of this happening and we couldn't be prouder of the response to this new award.

Following on from taking down the SSA we then leapt into the National Youth Art Awards for 2023. These were held at blue gallery again. We are fortunate to have had this new gallery space, provided by Antanas Procuta for the past few months, as it has given us the opportunity to keep the entry fees and commission low for artists but in particular for this group of young New Zealand creatives. Thank you to Paulette for all her behind the scenes work and to Amanda and Zoe for their help on Opening night, we cannot put these exhibitions on without the willingness of volunteers. Carefully curated for the second year by Anita Vela and Melany Sutherland, the exhibition has been hung expertly by Stu Bridson. Our two fantastic judges, Hollie Tawhiao and Tonia Geddes had the difficult job of going through over 300 artists, selecting 51 finalists in three age categories: 13-14, 15-19 and 20-25 years. The overall award was won by Nyle Turuwhenua, for her work Mahi Wahine? The NYAA is a collection of excitement, pride and incredible skill combining sponsors, parents, mentors and the artists collectively here for the same purpose, promoting and supporting youth arts. The Awards evening showcased how important art is to our youth and why we need to value the accessibility to arts for young people. This group of artists have an exhibition of storytelling, visual awe, skill, colour, variety and passion for something they love. The team of sponsors that come together to make this award possible every year is a testament to the support around the purpose of the award and for the artists who enter. We are grateful to Chow Hill, Forsyth Barr, Brian Perry Charitable Trust, CFO Partner, Print Council Aotearoa NZ, Wintec-Te Pukenga, Simon Lou-Anglesea OMS, Richard Reid-Surgeons4Health, Quested Family, Nicolas Wells, SCG Group, Rare Studio. The final sponsor to thank is Graeme Harris from Gordon Harris Art Supplies who has been sponsoring the People's Choice Award for many years now and this gives you an opportunity to come and see the exhibition and vote for your favourite artist before this closes on August the 13th. The lucky winner of this will get to spend a \$500 voucher.

The next exhibition, at blue will be the 2023 Members exhibition. Entries close August 10th so don't delay, this will be an opportunity for you to support the WSA as one of our few annual fundraisers and also as a display of our Members best work, 1 entry each. We are looking forward to setting up the Members exhibition and celebrating with an Opening on the first Saturday, at 1.30pm. Please come along, catch up with artistic friends and take in the variety of mediums and styles this exhibition always promises.

Blue gallery is operated by a team of volunteers who generously donate their time on a regular basis to sit at our exhibitions, we always need more to lighten the load so if you are interested in a very simple job for a few hours a month, then please contact the office.

Term 3 is underway and we need these classes full to go ahead. If you've been contemplating trying a new medium or a shorter course then we have options you may not have realised. Check our website regularly for workshops and term classes. By enrolling you are supporting artists who tutor at WSA and without these artists we do not have classes. It's that simple.

Plans are underway for a fundraising push with an Online Auction. We are calling out to all interested artists, Members or not, who would like to donate a piece of art and help towards the sustainability of the Waikato Society of Arts. This will be a first for us and we are looking forward to your participation and this being a great fund-raising success. The date is to be determined but that does not mean we aren't taking your good quality art from today. Please support us so we can continue to provide the studios and facilities so many people enjoy each year and have done so for the past 89 years!

Take care,

Julie

Shop now. Pay later.  
Always interest-free. The Afterpay logo, which consists of the word 'afterpay' in a lowercase, sans-serif font, followed by a circular icon containing a stylized 'A'.

## Obituary

### Evelyn Gardiner

*We wish to express our condolences to Life Member Rob Gardiner and his family at the passing of his wife Evelyn Gardiner. Life Member Elaine Henry shares her memories of Evelyn below.*

Evelyn Gardiner or Ev, as she was known to all her friends, passed away in Auckland on the 2nd July. Ev shared her love of art with her husband Rob and they both contributed much for the Waikato Society of Arts.

In the early days when the Society Gallery was in the house in Clarence St. Ev worked with clay. There was a garage by the house and this was converted into a pottery shed with a kiln or two. Later Ev did pit firings in an area behind the Hamilton Hotel which Chartwell Trust owned to store the Chartwell Collection and to establish the Centre for Contemporary Art Contemporary Art Gallery from 1982 to 1993.

Ev exhibited her works at a number of exhibitions in Hamilton and Auckland. And in the 1980s, she had had her own pottery studio in an old cowshed, which had room for experimentation with materials and a kiln for firings. These were interesting days. Her experimentation with found materials, such as car parts, natural materials, plastics/ fabric textures and mannequins, increasingly took a turn to assemblage art, some of which is now in the collection of the Waikato Museum, having been bought by collectors. Karen and Sue recently viewed these with the Museum registrars. Daisy's Little Cakes, made from collected cow pats from Rob and Ev's little farm on the outskirts of Hamilton, is in the Diane Yates collection. The then MP for Hamilton East, said at the time "it will add to the growing collection of Waikato memorabilia that already adorns her office."

One memorable exhibition was a shared show with David Lloyd in the WSA Gallery. She loved being a part of the Swamp Group, a group of potters formed in 1985, including Gary Nevin, Sue Catley, Don Thornley and Tony Sly. They exhibited at the WSA and also in Auckland at the New Vision Ceramic Gallery. Later, in 2009, her works were exhibited, and sold, as part of the WSA Members exhibition at Artspost.

Ev continued making art when they lived in Raglan in the early 2000's before moving to Auckland in 2002. In Auckland, Ev continued to make small collage, photographic and print works, eventually donating her printing press to the education department at Te Uru Gallery, Titirangi. She collected small works and filled the walls of the house. She loved to visit galleries, with some of her favourites located in the gallery cluster around the Karangahape Rd area, and she loved talking to artists and owners.

We send our sympathy to Rob and daughters Karen and Sue.

"A private celebration of Ev's life was held in Auckland on Friday 7th July 2023."



## Printmaking News

In this new section to our newsletter we will be bringing you a variety of news, information and other interesting pieces from the world of printmaking both here at the WSA and further afield.

### WAIPRINT 2023

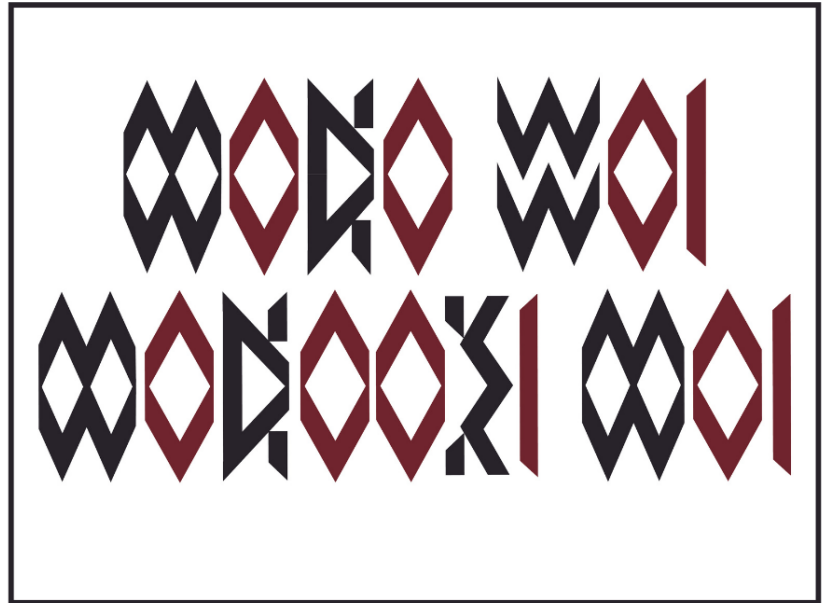
**23 September – 12 October  
at blue gallery**

**Opening:**

Friday, 22 September, 5.30

**Workshops:**

Saturday, 23 September,  
and Saturday, 7 October (TBC)



Hey Printmakers!

Time to start planning your submissions for WAIPRINT 2023. We're excited to be showing for the first time in WSA's new gallery, blue, at 3 Anzac Parade, downstairs from Paua Architects. And we're especially excited to welcome our guest artist, legendary printmaker and educator Marty Vreede.

#### Type Scape: A River Conversation

The distinctive landscape of the Whanganui region is created by the river, with deep incisions of the land and characteristic plateaus and flats. For printmaker and typographer Marty Vreede this landscape has informed his latest font design titled 'Te Awa Reo'. In Type Scape he will exhibit woodcuts, drawings, and the work leading to a font design that marks his response to the conversation between Te Awa Tupu o Whanganui me Papatuanuku.

Marty will take a one-day workshop on the Saturday following the opening. The class will be limited to nine people but will be suitable for both experienced printmakers and absolute novices. The relief technique he will teach yields immediate results but also informs basic printmaking ideas of repetition and variation of form and colour. All going well, a class collaboration will result in an addition to the WAIPRINT exhibition.

Still on the font front, a second workshop is also in the planning stages, for Saturday, 7 October. We're in discussion with Graham Judd of Inkiana Press about bringing his letterpress to the Print Room for a one-day workshop. [www.inkianapress.co.nz](http://www.inkianapress.co.nz).

Please let Julie know by email if you are interested in attending either (or both) of these workshops. She'll add you to a list and keep you informed of developments. [Julie@wsa.org.nz](mailto:Julie@wsa.org.nz)



## NYAA - National Youth Art Award 2023

**29th July - 12th August**

The opening and awards ceremony for our National Youth Art Award 2023 was held on Friday 28th July to a jam packed blue gallery. Congratulations to this years winners. Make sure you call into blue gallery to view the stunning selection of works from New Zealand's very talented young artists.

### 1st Place

**20-25 years**

Tristan Zhang

*'This Old House'*



### Merit

**20-25 years**

Jesse Kanji

*'Kiosco x Art*

*D Magia'*



### Overall Winner

Nyle Turuwhenua

*'Mahi Wahine?'*



### 1st Place

**15-19 years**

Madeleine Cunliffe

*'Uncanny Figures'*



### Sculpture Winner

Esmae Salesa

*'Plastic'*



### Merit

**15-19 years**

Hannah Huggan

*'We Glue The Flesh*

*Torn Apart'*



### Photography Winner

Isaiah Swann

*'Nakai galo e*

*au a koe'*



### 1st Place

**13-14 years**

Jaycee Xinyu Ji

*'Once Upon A*

*Whale Time'*



### Merit

**13-14 years**

Matai Reid

*'DISCARDED - 1'*



### Printmaking Winner

Peter McLellan

*'Babushka - Ukraine'*





# NYAA - National Youth Art Award 2023

29th July - 12th August



Judge Holly Tawhiao presented the 13-14 years 1st Prize on behalf of Sponsor Simon Lou Anglesea OMS Ltd: Winner Jaycee Xinyu Ji (absent)



Sponsor Roger Fitzgerald from Forsyth Barr (left) presented the 15-19 years 1st Prize to winner Madeleine Cunliffe



Madeleine Cunliffe



Sponsor Brian Squair from Chow Hill Architects (right) presenting the 20-25 years 1st Prize to Tristan Zhang



Tristan Zhang



Sponsor Richard Reid from Surgeons4Health presenting the Sculpture Award to winner Esmae Salesa



Esmae Salesa



Sponsor Anita Vela for The Quested Family presenting the Photography Award. Winner Isalah Swann (absent).



Sponsor Nicolas Wells (right) presenting the 13-14 years Merit winner: Matali Reid



Matali Reid



Judge Tonia Geddes (right) presented the 15-19 years Merit Prize on behalf of Sponsor Simon Lou Anglesea OMS Ltd: Winner Hannah Huggan



Hannah Huggan



Sponsor Sam Cunanne from Wintec-Te Pukenga presenting the 20-25 years Merit Prize. Winner Jesse Kanji (absent)



Sponsor Faith Thomas from Print Council Aotearoa presenting the Printmaking Award to winner Peter McLellan.



Peter McLellan



Sponsor Rachael Hayton from CFO Partners presenting the Overall Winner Certificate on behalf of Sponsor Bryan Perry Charitable Trust to Nyle Turuwheua's father as she was absent.



Proud dad with Nyle's winning piece.



blue Gallery

Open Wednesday - Saturday  
11.30am - 3.00pm

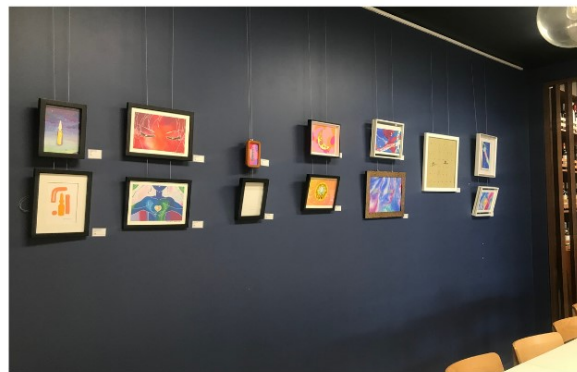
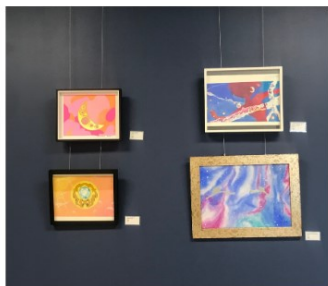
blue gallery  
3 Anzac Parade, Hamilton





## Mavis & Co Exhibition Ellie Lee-Duncan

From the 6th -31st July we had WSA teen tutor Ellie Lee- Duncan hold an exhibition at Mavis & Co Rototuna. Below are some photos of the variety Ellie had on display. We hope some of you had the opportunity to call in to view the exhibition and to sample some of the delicious food and drinks on offer.



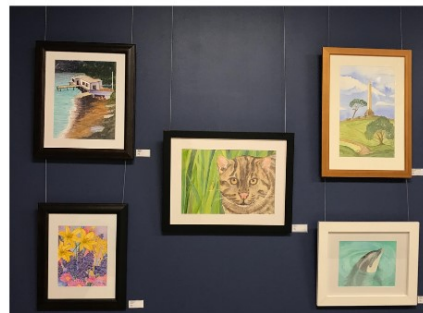
**MAVIS** AND CO  
café • bar • bistro

**Rototuna Shopping Centre  
2/44 Horsham Downs Road**

## Mavis & Co Exhibition Toni Leefe

**31st July - 3rd September**

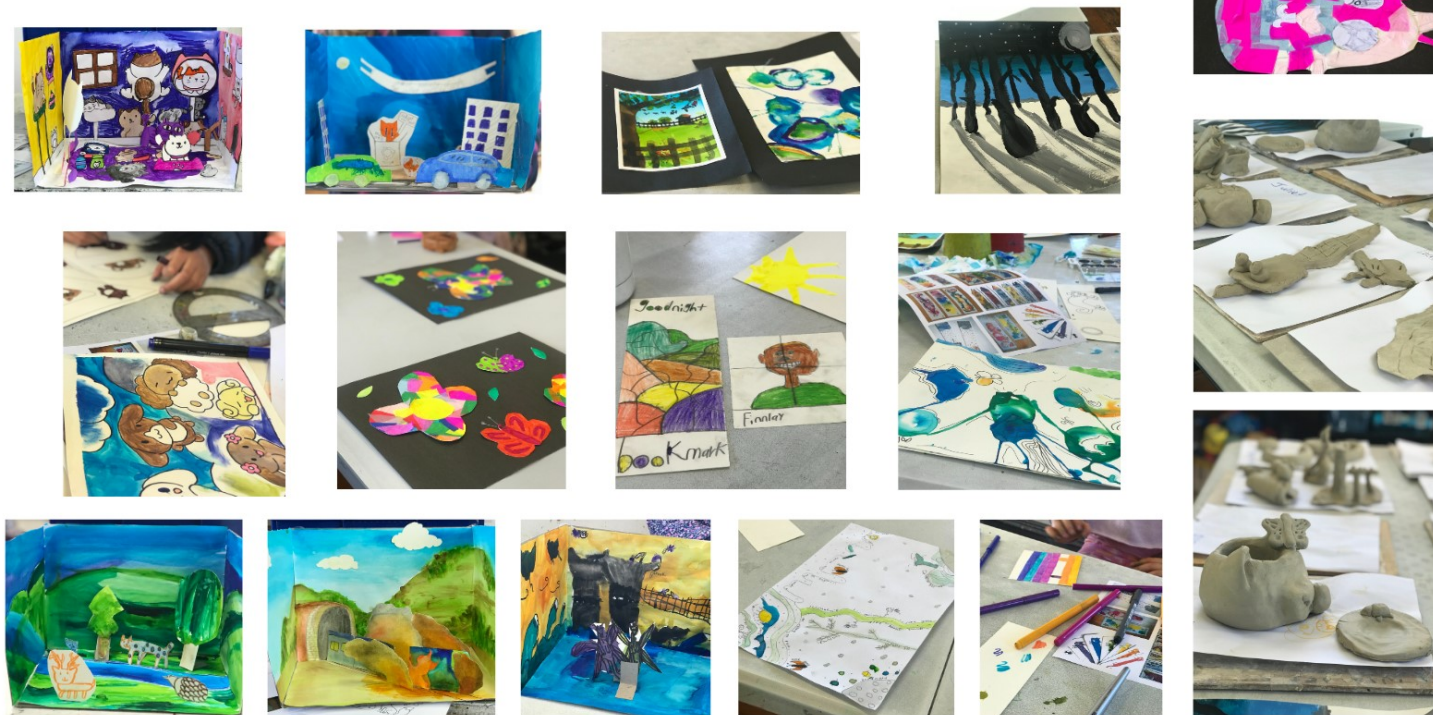
Currently exhibiting at Mavis & Co Rototuna is WSA member Toni Leefe. Toni has wowed us for years with her ability as a mouth painter. Be sure to visit this exhibition, to see her amazing works for yourself.





## July School Holiday Programme

Our last School Holiday Programme saw children creating a wonderful array of art, sculpture and craft. It's always rewarding to see the children learn new techniques and to explore with their own ideas and imagination. We also had Sylvia Sinel run a Sculpture programme for teens which was a great success. Our September holiday programmes will be available to view and enrol from August 7th. Below are some photos of the 5-12 year olds creations.



## September School Holiday Programme

Monday 25th September -  
Friday 6th October  
9am-12pm

Available to enrol online  
from Monday 7th August  
[wsa.org.nz](http://wsa.org.nz)



The Waikato Society of Arts recently had the pleasure of sponsoring an award for an exhibition at blue gallery in 2024, for the 2023 award recipient – Graduate Joslyn Hobbis. Congratulations and we look forward to seeing your exhibition in the future.

Image: Waikato Society of Arts Chair Rachael Hayton presenting Joslyn Hobbis with her certificate.





## Impressions of Africa by Haydn

I had always dreamed of Africa as a boy, drawing African animals and huts when no one else was. Not that I noticed. When I finally got there, my dream was fulfilled in part as the reality was different.

Where would I find my Africa?

Zimbabwe was then Southern Rhodesia going through a difficult transition. However it's colour, landscape and traditions were beautiful and I set about to record my impressions.



New Zealand left all our luggage on the wharf unwilling to send it. We arrived with three suitcases. We lived in an immigration house. It's amazing what you can do without. Fortunately I had four acrylic tubes of paint packed, - Thalo green, Ultramarine, Burnt Umber and Alizarin Crimson. Found a scrap of paper and did this view from the

Immigration house. Later my lovely mother in law, Iris, sent my my brushes and oils.

This is Thembe. Her brother asked if we would need help. We said yes because there was no washing machine provided. I loved the white washed walls and hung my little Vermeer. Thembe posed and I learned new things about painting portraits. I had oils by then.



Another thing I noticed was how close the clouds seemed to come to the horizon. This was an acrylic sketch on paper. Also the heat did not burn you as New Zealand where we have coastal atmosphere.



## Impressions of Africa by Haydn

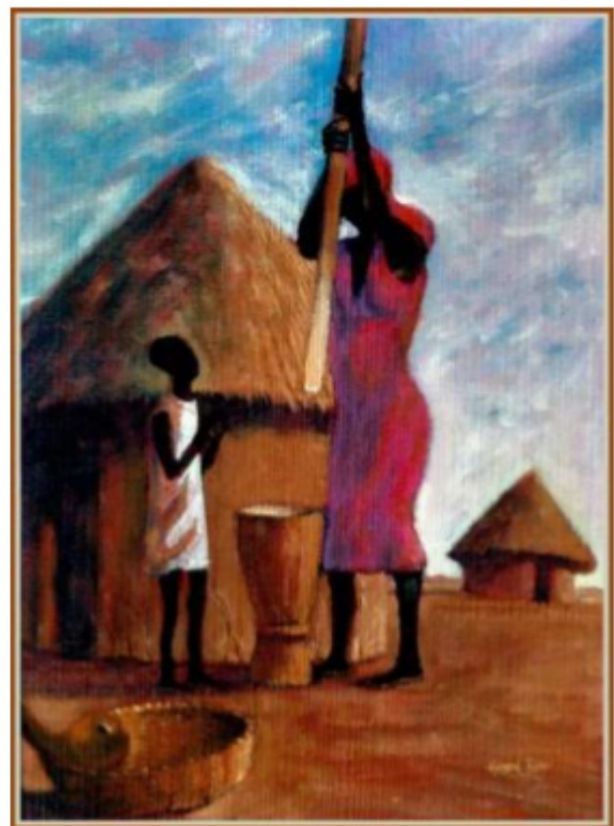
Zimbabwe was then Southern Rhodesia going through a difficult transition. However it's colour, landscape and traditions were beautiful and I set about to record my impressions.



However the local people and their customs fascinated me. This woman is pounding corn for their daily meal. A kind of porridge called Mealie. It was their main diet.



This was acrylics on board with sand. The Acacia trees had great rhythm. This was rejected by the Bulawayo Art Society.



This is oil on canvas paper. Mothers and their children are the same anywhere. There is serenity and joy holding a baby.

## Calendar of Events and Exhibitions

## AUGUST

SUN	MON	TUE	WED	THU	FRI	SAT
	Monday Watercolour Class Exhibition in Office Gallery Space Continues	1 Toni Leefe Exhibition on at Mavis & Co Rototuna	2 Term 3 Classes Continue	3	4	5
6	7	8	9	10 WSA Members Exhibition Entries Close	11	12 Last Day for Viewing NYAA Exhibition
13	14 Monday Watercolour Class Exhibition in Student Gallery Space Ends	15 Haydn Rive Exhibition in the Student Gallery Space	16	17	18	19 WSA Members Exhibition Opens
20	21	22	23	24	25	26
27	28	29	30	31		

## SEPTEMBER

					1 Term 3 Classes Continue	2
3	4	5 Haydn Rive Exhibition in the Student Gallery Space Ends Li-Swan Lim Exhibition at Mavis & Co Rototuna starts	6	7	8	9 WSA Members Exhibition Ends
10	11	12	13	14	15	16
17	18	19	20	21	22 Waiprint Opens	23 Term 3 Classes End
24	25 School Holiday Programme	26 School Holiday Programme	27 School Holiday Programme	28 School Holiday Programme	29 School Holiday Programme	30

## Future Important Dates:

- Monday 2nd October - Friday 6th October - School Holiday Programme Continues
- Monday 9th October - Term 4 Starts - 8 weeks
- Tuesday 10th October - Li-Swan Lim Exhibition at Mavis & Co Rototuna Ends



## Sponsors

We would like to thank our sponsors for their support of the WSA.



**Hamilton City Council**  
Te kaunihera o Kirikiriroa

Hamilton City



CREATIVE WAIKATO | AUUAH TAINUI



**Procuta Associates Urban + Architecture**



TRUST WAIKATO  
TE PUNA O WAIKATO



Caiger Charitable Trust



Susie & Clifford Allen



Bustle





**ART ESSENTIALS**

**SALE**

386 Anglesea Street, Hamilton  
Instore and Online  
[www.gordonharris.co.nz](http://www.gordonharris.co.nz)  
Sale from: 04/07/23 - 04/09/23

**Gordon Harris**  
THE ART & GRAPHIC STORE

A very special thanks to SHARP, who continue to help us substantially with printing.

**SHARP**  
Be Original.

## NEWSLETTER ADVERTISING

Whether you're a member or not, we are excited to hear about your art-related adventures, exhibition reviews or travels, accompanied by your own photos. These will be reviewed by the WSA and included if we have space and they do not conflict with our operations. The Executives decision is final. Please contact us at [wsa@wsa.org.nz](mailto:wsa@wsa.org.nz)

## WSA OFFICE AND ART SCHOOL

120 Victoria Street (above ArtsPost Gallery)  
PO Box 1018, Hamilton 3204  
07 839 4481

### Office Hours:

Mon-Fri 8.30am-4pm

Sat 9.30am-12.30pm

*(these may vary, please check in advance)*

[artschool@wsa.org.nz](mailto:artschool@wsa.org.nz) for art school enquiries (Paulette)

[wsa@wsa.org.nz](mailto:wsa@wsa.org.nz) for all WSA enquiries (Julie)

**Website:** [www.wsa.org.nz](http://www.wsa.org.nz)

*(Paulette works in the office 22 hours per week, if you need a faster reply please include Julie's email)*

## WSA EXECUTIVE COMMITTEE

Patron: Nancy Caiger

Committee: Michelle O'Brien  
Nicolas Wells  
Melany Sutherland  
Gemma Reid  
Holly Tawhiao

Treasurer & Chair: Rachael Hayton  
Hon. Solicitor: Charlotte Isaac  
Hon. Secretary: Julie Johnstone