



# Art Connections

WAIKATO SOCIETY OF ARTS

PO Box 1018 Hamilton 3240 [www.wsa.org.nz](http://www.wsa.org.nz)

Kia ora koutou katoa

This is a busy month and a month for reflection as we recognise ANZAC day and all those who bravely fought at Gallipoli, Turkey on the 25th of April, in 1915.

Āperira- is the eleventh lunar month of the Māori year.

Easter is also celebrated from April 7-10 and depending on your personal beliefs, worldwide this is recognised and runs over a long weekend where the WSA and blue gallery will be closed.

For the Waikato Society of Arts, April is when we have our main fundraiser for the year by hosting the New Zealand Painting and Printmaking Awards. This is the twenty second year we have held the awards and exhibition since 2000, having only missed one year due to Covid-19 restrictions. This is a labour of love and support for artists throughout Aotearoa and we are immensely proud to be able to support artists in both these mediums. None of this could have been done without the incredible support of the Vela Family Trust over the first twenty years of the exhibition with the Main Prize. The amazing sponsors who have continued their support toward the two newly formed Main Prizes of \$15000 each are now, the Print Council Aotearoa NZ, Chow Hill Architects, Susie and Cliff Allen, Vision Complete Earthworks, Golden Homes and a small and valuable group of our Life Members.

Alongside the two Main Prizes we gratefully acknowledge the ongoing sponsorship from Nancy Caiger for the Paint Merit Award and Ruth and Lester Davey for the Print Merit Award. Fusion Print (now SCG), Exhibition Hire Services, the Hamilton City Council, the NZ Lottery Grants Board, Accor Ibis, The Verandah, Hamilton Lake and Rare Studio, all help towards the operational costs of running the Awards and the exhibition. We have also been extremely lucky to have the generosity of David Lloyd who is exhibiting at Hanrad Rugs in April and a part of the proceeds from sales will be donated from David plus the commission is being waived by Hanrad Rugs towards the NZPPA.

Please make sure to support all these businesses and artists wherever possible as they support artists in return and the WSA.

We have kindly been donated art books from the Hamilton Library and the Waikato Museum for our library. Remember as a member you have free access to these books, to sit and read in the library space, use for inspiration in your art classes or to take home. See the office if you wish to check any of the huge range out.

Have a safe and happy Easter and make sure you have secured your booking in our term 2 classes, the April school holiday programme and the workshops we have coming up. All these are available through [wsa.org.nz](http://wsa.org.nz) or the office. We look forward to seeing you support the NZ Painting and Printmaking Awards exhibition on at the Verandah, Hamilton Lake from April 14-23, 10am to 4pm. If you would like to volunteer to sit at any of our exhibitions and awards through the year please contact the office, we are always looking for help with this, hanging, packing down and openings.

WSA was founded in 1934, by a team of dedicated volunteers wanting to support local artists with learning facilities and providing resources and exhibition opportunities. We continue to learn, develop and recognise the importance of Te Ao Maori and Te Tiriti o Waitangi within WSA. Waikato Society of Arts is a not-for-profit organisation dedicated to serving the art of the visual artist and art lovers at every stage of their development. WSA works to enrich the community by supporting growth and development of the visual arts in collaboration with those wishing to benefit artists in the Waikato and further afield.

---

## Awards 2023



Finalists announced!

**[View at wsa.org.nz](https://wsa.org.nz)**

### **NZPPA Awards & Opening Event**

Friday 14th April @5.30pm

'The Verandah', Hamilton Lake

**Judges talk** at 10.30am April 15th  
at the exhibition.

---

All entries must be received on or before the 8 May 2023. Finalists and non-finalists will be notified by 5 June 2023. The awards and exhibition will be held on 23 June, 2023 at 5.30pm in blue Gallery, 3 Anzac Parade, Hamilton.



---

### **NYAA Entries close 18 June 2023**

All entrants notified as Finalists or not 27 June 2023. Delivery of artwork no later than 24 July 2023. Opening and Awards evening 28 July 2023 5.30-7.30pm. Exhibition dates 29 July – 13 August 2023

## April SHP

### Monday 17th April - Friday 21st April

(Week 2 only)

**5-12 years**

**9am - 12pm**



We have a fun week of art activities planned for the April School Holidays. Our student numbers are kept low to give children quality time learning and exploring with many art mediums and techniques. Our tutors are experienced in their roles as tutors and artists, and also tutor our term weekly classes.

#### Monday 17th April

Acrylic Painting Skills and Clay Modelling

#### Tuesday 18th April

Drawing Cartoon Animals and Watercolour Painting skills

#### Wednesday 19th April

Tissue Collage Artworks and Geometric Designs

#### Thursday 20th April

Miniature Art Creations and Oil Pastel and Dye Artworks

#### Friday 21st April

Textured Wool Art Canvases and Watercolour Easter Egg Designs



**\$35per child per day or \$30 if  
attending all 5 mornings.  
All materials included.**

**enrol online  
wsa.org.nz**

Shop now. Pay later.  
Always interest-free. **afterpay**

## Funnies



THEY SHOULD MAKE  
AN ALARM CLOCK  
THAT SOUNDS LIKE  
A DOG ABOUT TO  
PUKE.  
NOTHING GETS YOU  
OUT OF BED FASTER.

Why buy it  
for \$7 when you  
can make it yourself  
with \$92 of  
craft supplies.



## Sculpture & 3D Character Design April Holiday Programme

One of our super talented tutors Anya Gladstone-Gallagher has been running a sculpture & 3D character design programme for the last few school holidays. Don't miss out on this unique programme in week 2 of the April Holidays. Numbers are kept small to give your teen a quality experience and expert tutoring.

**12-17 year olds**

**9am - 12pm**

**Monday 17th April - Thursday 20th April**

**Enrol online [wsa.org.nz](https://wsa.org.nz)**



afterpay Available here

**\$199 for 4 mornings - all materials included**

Anya had an incredible class of talented students attend the 'Sculpture and 3D Character Design' school holiday programme in January. Students learned how to design, build, sculpt and paint a character with polymer clay. We were impressed by the skill level and talent exhibited by all the students.

Super Sculpey is a specialised oven-bake polymer clay, often used in the manufacturing of toys, jewellery, and figurines. In this course, you will learn how to design a character and sculpt with this high-quality product. You will also learn how to build a tinfoil and wire base ('armature'), which will reinforce the structure of your creation, so it may survive the distance. Does your character have three heads or fire spurting from their nostrils? Maybe they have human features or just those of a plain old bunny rabbit. In this class, the world is your oyster (and your character could be too!) Sculpting with polymer clay is a fun way to relax and let your creativity loose. You can achieve an intricate level of detail, using a variety of tools. Sculpting is immensely helpful for those wanting to improve their drawing skills, as you will begin to understand objects in a 3-dimensional format. It also serves as a steppingstone for those planning to pursue a career in the film industry as creature designers, props makers, stop-motion animators, prosthetic make-up artists and more.





## Printmaking News

In this new section to our newsletter we will be bringing you a variety of news, information and other interesting pieces from the world of printmaking both here at the WSA and further afield. This newsletter we feature 2 of our talented printmaking tutors. Gemma Reid has been with us a while now, and Renee is joining WSA from term 2.



### Gemma Reid

Originally from Auckland Gemma moved overseas, returning to NZ in 2019. She has now settled with her family in Hamilton. Primarily working as a Printmaker, with a particular interest in intaglio, this print practice is augmented by a variety of creative methods. As a freelance illustrator and designer Gemma has worked on a wide variety of projects. She is also an experienced tutor having offered workshops with both adults and children. Gemma loves drawing and believes strongly that an active drawing practice underpins all artistic practice, whether you are drawing for its own sake or developing further creative concepts. Observational drawing is an invaluable skill which will inform all of your art development whatever your artistic ability.

Instagram: @gemmareidartist

---

### Renee Marjolein

Kiaora, I'm Renee and I'm pleased to be tutoring the Introduction to Relief Printmaking class from term two.

I grew up in the beautiful rural Waikato, holidaying at lakes and rivers and day tripping to the beach. These formative experiences cemented in me a love for the Waikato basin, the texture of the bush, crisp New Zealand light, and the constant embrace of distant hills.

I studied Visual Arts in Auckland, and the Bombay hill became a threshold between home and not home. I majored in printmaking, and still love the fascinating variety of outcomes printmaking offers. After my BVA I returned to Hamilton, completed a PGdip Teaching at Waikato Uni and began commuting to teaching positions in the greater Waikato.

I have tutored and run works privately and am pleased to now join the WSA team.

My current art practice is primarily in wood block print. I love the graphic quality of single colour images, and the methodical nature of the carving process. The beautifully designed 1935 Pictorial series of stamps capture iconic New Zealand Fauna and natural and cultural scenes. Translating them into wood block print is an ongoing project.

The bach series began as catharsis but has become a reflection upon place and comfort. They are symbolic and a little romantic, sitting with their faces to the sun cloaked in bush and garden. They are humble dwellings with the stuff of life around them, washing lines, ladders, gas bottles, boogie boards. In them I try to capture a sense of place that we are drawn to return to; whether physically, in memory or in imaginings.

It is a great joy to hear stories from viewers of how they bring to mind past homes, holidays, relationships and special memories.

<https://www.rmprintmaker.com/>

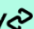


## Term 2 Classes

We have a great variety of classes on offer in term 2. Our studios are a lovely place to create in the winter months. All 4 studios are well heated, full of light and sun. Our tutors are highly skilled in their fields and are passionate about passing their knowledge onto others. Small class numbers give you maximum benefit and customised tutoring.

Enrol now to secure your place in one of our many classes on offer [wsa.org.nz](https://wsa.org.nz)

**Below are just a small selection of classes that may be of interest in term 2 starting from 24th April for 8 weeks.**

Shop now. Pay later.  
Always interest-free. **afterpay** 

<b>Monday Evening Oil Painting</b>	<b>Tuesday Adult Creative Writing</b>	<b>Tuesday Watercolour with Haydn</b>
<b>Tuesday Sketching for Beginners &amp; Continuers</b>	<b>Tuesday Introduction to Relief Printmaking</b>	<b>Tuesday Art Class for 10-14 year olds</b>
<b>Wednesday Acrylics &amp; Pastels with Haydn</b>	<b>Wednesday Weaving Class</b>	<b>Wednesday 5-9 year olds Art Class</b>
<b>Wednesday 13-18 year olds Art Class</b>	<b>Thursday Intaglio Printmaking</b>	<b>Thursday Calligraphy Class</b>
<b>Thursday Oil Painting</b>	<b>Thursday 5-9 year olds Art Class</b>	<b>Thursday 15-18 year olds Art Class</b>
<b>Thursday Intro into Art History</b>	<b>Friday Art Taster</b>	<b>Friday Mixed Media Collage</b>
<b>Friday Drawing &amp; Painting the Body</b>	<b>Friday 5-7 year olds Art Class</b>	<b>Friday 8-10 year olds Art &amp; Illustration</b>
<b>Saturday 5-9 year olds Art Skills</b>	<b>Saturday 10-13 years Art Explorers</b>	<b>Saturday 5-9 years Painting &amp; Drawing</b>



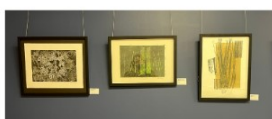
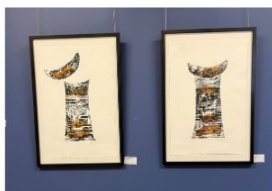
## Exhibition - Mavis & Co Cafe Rototuna

### 'Collections' by Elane Wiseley

28th March - 3rd May

#### Artist Statement:

I live on the foothills of Mount Pirongia. I enjoy print as it allows me to work with several different printing techniques, sometimes combining different techniques in one print. My prints mainly relate to my environment and environmental events in Nature.



Rototuna Shopping Centre 2/44 Horsham Downs Road

## Exhibition Opportunity

If you would like to have an exhibition at Mavis and co. Rototuna, in 2023, please contact Julie at

**julie@wsa.org.nz** to discuss.

There is no hire fee and only 10% commission is taken on any sales. This is a good space for 8 x A3 sized pieces of works hung in a line as a guide. We have had some great sales. You also have the opportunity to have an opening, with catering organised through Chace and his team.

**MAVIS AND CO**

café · bar · bistro

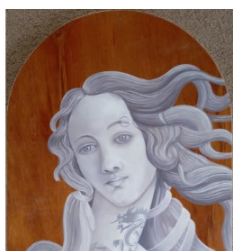
## blue Gallery

### 'Altarpieces & other things' by Dale Gilmore

24th March - 13th April

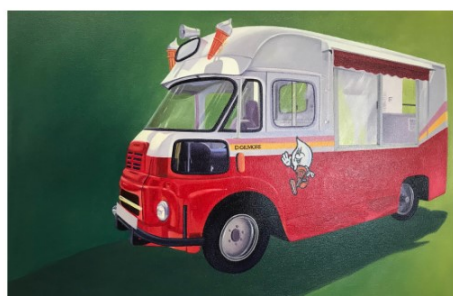
#### Artist Statement:

This is a collection from work done in series. The Altarpieces reference the renaissance and earlier with their Romanesque and Gothic shapes. Also the timber backgrounds as opposed to canvas. In days there would normally be a Biblical narrative on the panels, such as a crucifixion or annunciation. Those narratives have been replaced with the new gods of consumerism and Globalisation. This is not a political statement, but rather a reflection of our changing times and once shared values no longer in evidence.



blue gallery  
3 Anzac Parade, Hamilton

**Open Wednesday – Saturday  
11.30am – 3.00pm**



blue

To book a place, or for more information please enquire via  
**julie@wsa.org.nz**



## blue Gallery

### 'New Horizons' Creations of sand by Nancy Tschetner & Sally-Ann Davies Printmaker

20th April - 11th May

Opening Event  
Thursday 20th April  
5.30pm-7pm



blue gallery  
3 Anzac Parade, Hamilton



## blue Gallery

### 'Paintings & Sculpture' by The Monday Group with Sylvia Sinel.

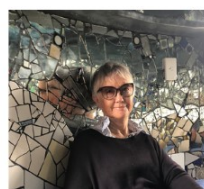
Opening event  
Saturday 20th May  
1pm-3pm.

Exhibition runs until 10th June

Open Wednesday – Saturday  
11.30am – 3.00pm



Jane Finch



Ann Harlow



Sylvia Sinel

blue

blue gallery  
3 Anzac Parade  
Hamilton



Garry Moore



Anne Carter-Jones



Pat Berry



Donna Dold



Susie Verry



## Workshops

### Watercolour 'Negative Painting' Workshop

**Sunday 21st May - 10am - 3pm**

**\$95pp. All materials included.**

Join highly skilled and experienced WSA Watercolour Tutor Paulette Bruns for a day of learning the tricks to negative painting in Watercolour.

In this 'hands on' workshop you will create 1 or 2 small step by step paintings.

Negative painting in watercolour is a unique, layered, 'see through', method to create many effects like 'looking through water', shine and ripples on water as well as many other subjects like flowers etc where you can portray a beautiful transparent effect of seeing colours layered below other colours helping create the effect of depth in a painting.

*Not suitable for brand new beginners.*

*Students need to have done either a beginner watercolour workshop or minimum half a term of watercolour classes.*



**Enrol online**  
**[wsa.org.nz](http://wsa.org.nz)**



### April School Holidays Beginner Watercolour Workshop

**Suitable for teens and adults**

**Wednesday 19th April - 1pm - 5pm**

Shop now. Pay later.  
Always interest-free. **afterpay**

**\$80pp**  
**All materials included**



In this 'hands on' workshop you will make some test examples as well as create a small step by step painting.

As a watercolour artist and tutor of many years, I love being able to pass on my passion for art. In particular watercolour which has an amazing luminosity and ability to reflect light. I believe we should never stop learning, and painting in watercolour can challenge us in many ways due to its un-predictableness and wonderful surprises.

10 students maximum gives you maximum benefit.





## Cambridge Chapel ... (15)

My friend contacted me from Wellington and announced he had bought a chapel in Cambridge Terrace, Wellington. He was intending to restore it and use it to restore some of the Salvation Army music they had lost. As an art collector he would like to fill it with beautiful works. Would I like to come down and survey some spaces where I could add some works? I liked.

A year later the chapel had been renewed, organ pipes replaced and the place filled with interested people. My friend had planted an acorn and now there was an oak tree. His dream now a reality. For me it was fulfilling too as I had worked towards a specific goal. It was great to see some creation graphics I had donated beautifully framed.



I have travelled down to several concerts now.



My paintings were packed in a pilot's car and loaded up on my friends private jet.  
And yes, I have flown on it.



Wellington at it's positively best.



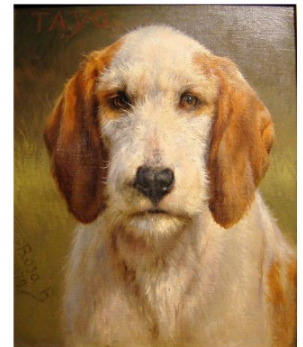
## Haydn's Artyfacts

### Three cheers for Women Painters - 3

**Rosa Bonheur (1822 ~ 1899)**



Rosa's most famous work "The Horse Fair" painted on a huge canvas stretching some 18 ft long and 8 ft high. This work earned her international fame and many awards were to follow. She travelled to Scotland and met Queen Victoria who admired her work. A lot of her animal paintings sold in England as they appealed to the Victorian mind.



Before Empress Eugenie lost her kingdom of France she had awarded Rosa with the highest honour - the French Legion of Honour medal that you see on her portrait.

Rosa never painted the turmoil going on around her but brought comfort to the people to see some normalcy and peace midst terrible strife. She was able to buy an estate near the forest of Fontainebleau where she settled for the rest of her life.

Colonel William Cody (Buffalo Bill) even came to visit her on the estate amongst her menagerie of animals. Even though she had said she had no use for men, it has to be said she had a thing for Bill. And there he is astride a great stallion. The work was used later as his famous poster. The horse I think is the main subject.



## Exhibition

### 'His, Hers & Mine' by David Lloyd

20th April - 20th May

Hanrad Bespoke Rugs are hosting an exhibition by David Lloyd called 'His, Hers and Mine' opening 20th April through to 20th May 2023.

The opening event will be on 20th April, 5.30pm to 7.30pm at the **HANRAD BESPOKE RUG Gallery**, 137A Alexandra St, Hamilton CBD.

We will be providing refreshments and we request an RSVP to our email address [info@hanrad.com](mailto:info@hanrad.com).

# HANRAD

BESPOKE RUGS



**LEARN ABOUT THE COLOUR WHEEL**

Includes everything needed to complete the activity

- Colour wheel
- Colour mixing chart
- Colour palette
- Colour swatches
- Colour mixing guide
- Colour mixing chart
- Colour mixing guide
- Colour mixing chart
- Colour mixing guide

**\$12**

## Creative at Home Packs

SAVE & BUY 10 PACKS FOR \$90

**LEARN TO DRAW STEP BY STEP**

Includes everything needed to complete the activity

- Drawing guide
- Drawing paper
- Drawing pencils
- Drawing pens
- Drawing markers
- Drawing brushes
- Drawing eraser
- Drawing sharpener
- Drawing ruler
- Drawing compass

**\$10**

**MANDALA CREATIONS**

Includes everything needed to complete the activity

- Mandala guide
- Mandala paper
- Mandala pencils
- Mandala pens
- Mandala markers
- Mandala brushes
- Mandala eraser
- Mandala sharpener
- Mandala ruler
- Mandala compass

**\$10**

**COLOURED PAPER ARTWORKS**

Includes everything needed to complete the activity

- Coloured paper
- Coloured pencils
- Coloured pens
- Coloured markers
- Coloured brushes
- Coloured eraser
- Coloured sharpener
- Coloured ruler
- Coloured compass

**\$10**

**WATER COLOUR PAINTING**

Includes everything needed to complete the activity

- Watercolour paper
- Watercolour pencils
- Watercolour pens
- Watercolour markers
- Watercolour brushes
- Watercolour eraser
- Watercolour sharpener
- Watercolour ruler
- Watercolour compass

**\$12**

**PAINT A SUNSET**

Includes everything needed to complete the activity

- Sunset guide
- Sunset paper
- Sunset pencils
- Sunset pens
- Sunset markers
- Sunset brushes
- Sunset eraser
- Sunset sharpener
- Sunset ruler
- Sunset compass

**\$12**

**LEARN TO DRAW UPSIDE DOWN**

Includes everything needed to complete the activity

- Upside down guide
- Upside down paper
- Upside down pencils
- Upside down pens
- Upside down markers
- Upside down brushes
- Upside down eraser
- Upside down sharpener
- Upside down ruler
- Upside down compass

**\$10**

**CREATE WITH CLAY**

Includes everything needed to complete the activity

- Clay guide
- Clay paper
- Clay pencils
- Clay pens
- Clay markers
- Clay brushes
- Clay eraser
- Clay sharpener
- Clay ruler
- Clay compass

**\$12**

**PAPER SNOW FLAKES**

Includes everything needed to complete the activity

- Paper snow flakes guide
- Paper snow flakes paper
- Paper snow flakes pencils
- Paper snow flakes pens
- Paper snow flakes markers
- Paper snow flakes brushes
- Paper snow flakes eraser
- Paper snow flakes sharpener
- Paper snow flakes ruler
- Paper snow flakes compass

**\$10**

**DOT PAINTING**

Includes everything needed to complete the activity

- Dot painting guide
- Dot painting paper
- Dot painting pencils
- Dot painting pens
- Dot painting markers
- Dot painting brushes
- Dot painting eraser
- Dot painting sharpener
- Dot painting ruler
- Dot painting compass

**\$10**

Independant advert by member.

"Hamilton watercolour artist and wsa member Martin Necas has been selected as one of 120 New Zealand artists to exhibit at Auckland art show on 18-21st of May at the cloud on Auckland's waterfront. come and meet the artist and enjoy the largest art show in New Zealand!"

We are part of

## CommUnity

turning commerce into community

We want YOU to join now to help our community group thrive.

Follow CommUnity on social media

CommUnity is a fund generating program that provides ongoing, untaged funding to our local Kiwi communities. When a CommUnity Member (shopper) makes a purchase at a registered CommUnity Merchant (shop), a percentage of each transaction goes to the Members selected CommUnity Groups.

Make sure to select us as one of your chosen CommUnity Groups!

To join CommUnity and for more information scan the QR code or visit [www.comm-unity.kiwi](http://www.comm-unity.kiwi)

SCAN ME



## Mercury Bay Art Escape

The Mercury Bay Art Escape 2023 is over for another year and despite routes into the Coromandel being longer and even more scenic now, it was another highly successful event. The sun shone for the two weekends and the Art Escape Gala Night at Hot Waves Cafe in Hot Water Beach, proved a great kick off. Over 150 people including artists and sponsors enjoyed listening to the charming guest speaker, gardening personality, Lynda Hallinan. Lynda cleverly wove plants and art by describing how botanical art had helped to save rare New Zealand flora by being the only impressions of some varieties thought extinct. A chosen piece by each of the 41 talented and diverse artists is on display at Hot Waves until April 11th. Check out jewellery, ceramics, wood craft, prints and other art media at Hot Waves Café before Easter Monday. The exhibition was curated by Annie Wilson of the Miranda Farm Gallery.

The popular 'Artists in Residence' sessions were held at Hot Waves Café in-between weekends which gave the opportunity to view closely and chat to artists at work. Weekend visitors to the artists open studios remained healthy with many artists having over 100 daily visitors. Noticeable this year was the number of locals who experienced the Open Studios and this support was appreciated.

The event owes much to our committed local sponsors who deserve your support, Bayleys; Guthrie Bowron, Whitianga ; Lea Jurkovich, Bayleys Whitianga; Whitianga Waterways; Lifestyle Centre, Whitianga; The Pour House, Hahei ; Top 10, Hot Water Beach; The Lawnmowers Son, Hahei; The Lost Spring, Whitianga.

As well many local supporters donated gifts and time to supporting the Art Escape: Hot Waves Café; Kaizen Go Vino, Cooks Beach; Coastal Signs, Whitianga; Angie LC Photography; Lion Company; Coromandel FM, Annie Wilson, Miranda Farm Gallery; Hotties, Hot Water Beach; Stellariz; CFM; Di Tocker, Cambridge; Tim Aldrich, Tairua.

We look forward to an even better and bigger Art Escape next year showcasing the unique talent of the Eastern Coromandel. Or if you can't wait that long visit members studios by appointment during the year.

Inquiries to  
Marion Manson MBAE Trustee 021 1161459



Jennifer Panther (seated) & Margherita Giampietri



Artist in Residence Jennifer Panther Painting Detail

## Calendar of Events and Exhibitions

APRIL

SUN	MON	TUE	WED	THU	FRI	SAT
					Dale Gilmore Exhibition continues at blue Gallery	<b>1</b> Elane Wisely Exhibition continues at Mavis & Co, Rototuna
<b>2</b>	<b>3</b>	<b>4</b>	<b>5</b>	<b>6</b> Term 1 Classes End	<b>7</b> Easter Good Friday	<b>8</b> Easter
<b>9</b> Easter Sunday	<b>10</b> Easter Monday	<b>11</b> NZ April School Holidays Start	<b>12</b>	<b>13</b> Dale Gilmore Exhibition ends at blue Gallery	<b>14</b> NZPPA Awards & Opening Event	<b>15</b> NZPPA Judges Talk
<b>16</b> NZPPA Exhibition Continues	<b>17</b> School Holiday Programmes	<b>18</b> School Holiday Programmes	<b>19</b> School Holiday Programmes	<b>20</b> School Holiday Programmes 'New Horizon' Exhibition opens at blue Gallery	<b>21</b> School Holiday Programmes	<b>22</b>
<b>23</b> NZPPA Exhibition Ends	<b>24</b> Term 2 Classes Start	<b>25</b> ANZAC Day No Classes	<b>26</b> Term 2 Classes Resume	<b>27</b>	<b>28</b>	<b>29</b>
<b>30</b>						

MAY

	<b>1</b> Term 2 Classes Continue	<b>2</b>	<b>3</b>	<b>4</b>	<b>5</b>	<b>6</b>
<b>7</b>	<b>8</b> Small Sculpture Award Entries Close	<b>9</b>	<b>10</b>	<b>11</b>	<b>12</b>	<b>13</b>
<b>14</b>	<b>15</b>	<b>16</b>	<b>17</b>	<b>18</b>	<b>19</b>	<b>20</b>
<b>21</b>	<b>22</b>	<b>23</b>	<b>24</b>	<b>25</b>	<b>26</b>	<b>27</b>
<b>28</b>	<b>29</b>	<b>30</b>	<b>31</b> Term 2 Classes Continue	<b>Future Important Dates:</b> <ul style="list-style-type: none"> <li><b>Monday 5 June</b> Kings Birthday - No Classes</li> <li><b>Sunday 18 June</b> NYAA Entries Close</li> <li><b>Friday 23 June</b> Small Sculpture Awards &amp; Opening Event</li> <li><b>Friday 28 July</b> NYAA Awards &amp; Opening Event</li> <li><b>Thursday 10th August</b> WSA Members Exhibition Entries Close</li> <li><b>Saturday 19th August - 10th September</b> WSA Members Exhibition</li> </ul>		



## Sponsors

We would like to thank our sponsors for their support of the WSA.



TRUST WAIKATO  
TE PUNA O WAIKATO



Caiger Charitable Trust



Susie & Clifford Allen







# CLEARANCE SALE

## SELECTED PRODUCTS UP TO 50% OFF

While stocks last. Stock varies between stores  
 AUCKLAND HAMILTON WELLINGTON CHRISTCHURCH  
 In-store & Online [www.gordonharris.co.nz](http://www.gordonharris.co.nz) Sale Ends 01/05/23

A very special thanks to SHARP, who continue to help us substantially with printing.

# SHARP

Be Original.

### NEWSLETTER ADVERTISING

Whether you're a member or not, we are excited to hear about your art-related adventures, exhibition reviews or travels, accompanied by your own photos. These will be reviewed by the WSA and included if we have space and they do not conflict with our operations. The Executives decision is final. Please contact us at [wsa@wsa.org.nz](mailto:wsa@wsa.org.nz)

### WSA OFFICE AND ART SCHOOL

120 Victoria Street (above ArtsPost Gallery)  
 PO Box 1018, Hamilton 3204  
 07 839 4481

#### Office Hours:

Mon-Fri 8.30am-4pm

Sat 9.30am-12.30pm

*(these may vary, please check in advance)*

[artschool@wsa.org.nz](mailto:artschool@wsa.org.nz) for art school enquiries (Paulette)

[wsa@wsa.org.nz](mailto:wsa@wsa.org.nz) for all WSA enquiries (Julie)

Website: [www.wsa.org.nz](http://www.wsa.org.nz)

*(Paulette works in the office 22 hours per week, if you need a faster reply please include Julie's email)*

### WSA EXECUTIVE COMMITTEE

Patron: Nancy Caiger

Committee: Michelle O'Brien  
 Nicolas Wells  
 Melany Sutherland  
 Gemma Reid

Treasurer & Chair: Rachael Hayton  
 Hon. Solicitor: Charlotte Isaac  
 Hon. Secretary: Julie Johnstone