



Art Connections

WAIKATO SOCIETY OF ARTS

PO Box 1018 Hamilton 3240 www.wsa.org.nz

Welcome to our April Newsletter

We hope you are all safe at home for the next 4 weeks or so while the country is in level 4 lockdown and we beat this virus together.

With all this change and ongoing uncertainty, we have postponed the start of term 2 to Monday May 4th and will continue to reassess this as things progress. Please keep an eye on our website for updates.

We have also moved the date of the NZ Painting & Printmaking Awards to an opening evening of October 2nd @5.30pm. The exciting thing about this is that it means it will coincide with our Waiprint exhibition in Artspost, so printmaking will get a good profile from both events. It also gives our National Youth Awards entrants longer to work on their art. With both of these National Awards there are more prizes and categories.

If we are back up and running, our Next Level Gallery Members Exhibition will be from 4th June to 1st July, and our Artspost Members Exhibition will be from the opening night on 6th August to 6th September.

So a lot to keep you all busy at home and to look forward to over the coming months.

On top of all of that make sure you do look at our Term 2 timetable, as apart from our usual popular long term classes, we have new classes beginning that may tempt you to try something new. Our new website will be going live shortly. So if you are a member and artist you can create your artist profile on there for everyone to link into. This is really exciting to finally have this platform available.

Over the next few weeks we will try to keep you as up to date as is realistic. We will be emailing a May newsletter, but may not be able to mail out one to those who receive one by post due to the fact that we can't print it unless everything is open and we can come back into the office. We will continue the necessary operations for the WSA during the shutdown from home so we are ready for when the Art School is given clearance to re-open. In the meantime we will endeavour to support our staff, members and students as best we can. Please bear with us as we learn how to work in this new environment and manage our resources appropriately to sustain the WSA.

Follow us:

Waikato Society of Arts

<http://www.facebook.com/waikatosocietyofarts>

<http://www.instagram.com/artwaikato>

Next Level Gallery

<http://www.facebook.com/nextlevelgallery>

<http://www.instagram.com/nextlevelgallery>



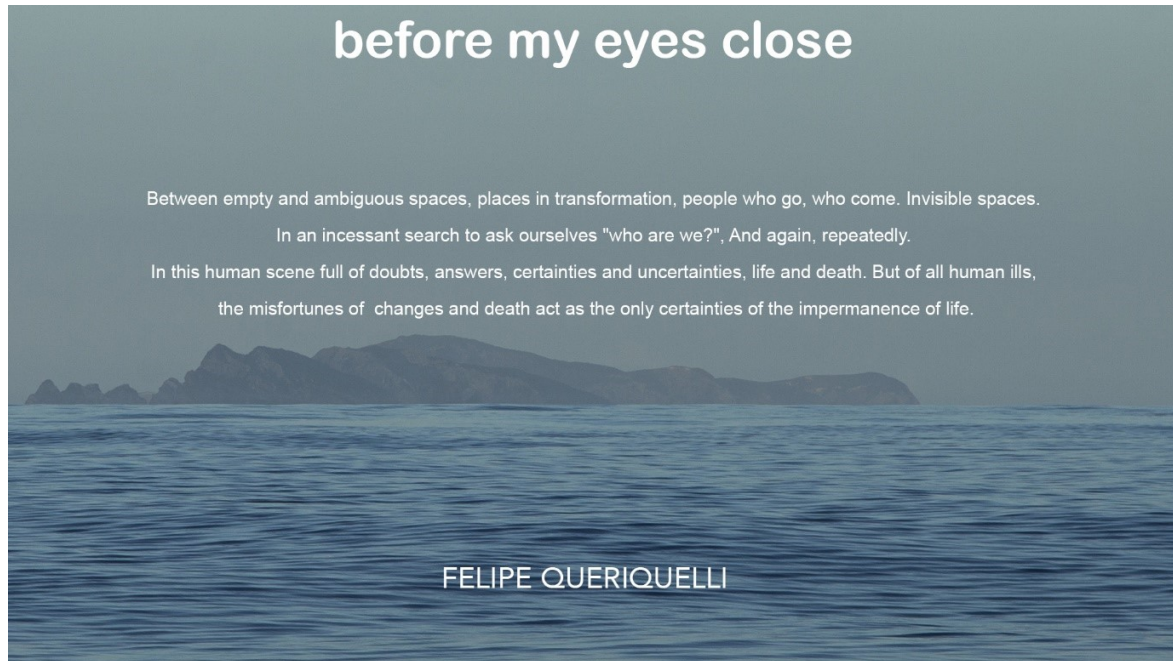
April 2020

Next Level Gallery – Now Postponed until further notice

Upcoming Exhibition - Fri 3rd April to Monday 20th April.

Opening & Artist Talk Sunday 5th April @2pm.

(Artist Talk by Felipe & his tutor).



For hire:

8 interlocking display panels. 122mm x 1500mm with 2100mm high stands. \$20 per panel, you will need a minimum of 3 to support free standing.

Contact the WSA office for more information or bookings.

wsa@wsa.org.nz

07 8394481



Exciting Changes for NZPPA 2020

NEW ZEALAND PAINTING AND PRINTMAKING AWARD 2020

We are pleased to announce that Julia Waite has been appointed as the Judge for our 2020 NZPPA. Julia holds a Bachelor of Arts (First Class Honours) from the University of Otago (2005), a Masters of Museum and Heritage Studies from Victoria University (2009) and a Masters of Arts (First Class Honours) from the University of Auckland (2017). Julia is currently the Curator of New Zealand Art at Auckland Art Gallery Toi o Tāmaki. We are very pleased to have Julia on board and believe her expertise surrounding New Zealand art is well aligned with the demands of the award - to be knowledgeable on both paint and print.



Entries close on the 7th of August 2020

**Award ceremony date is Friday 2nd October 2020 @5.30pm,
held at The Atrium, Wintec, Hamilton.**

Exhibition hours are 9am—5pm daily.

**The award entry form is available now on our website:
www.wsa.org.nz**

Any entries received so far up until March 25th are allowed to be replaced another entry if the artists chooses, now that the time frame has been extended.

We are pleased to confirm that the Vela Family Trust is once again the chief sponsor of the award, providing our main cash prize of \$20,000NZD.

Ruth Davey Merit Printmaking Award \$2000.
\$2000.

Brian Perry Charitable Trust Merit Painting Award

PCANZ Print Award \$1000.

Wintec Media Arts Paint Award \$1000.

Gordon Harris People's Choice Award \$500.

Thank you also to Wintec for joining us once again as our chief partner, hosting the NZPPA in your stunning venue, The Atrium.



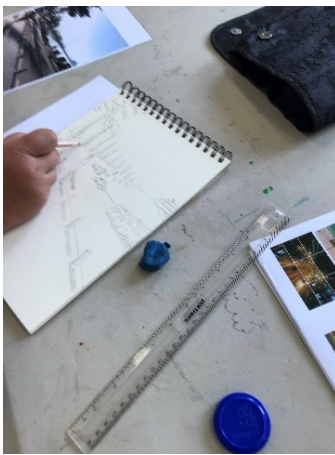
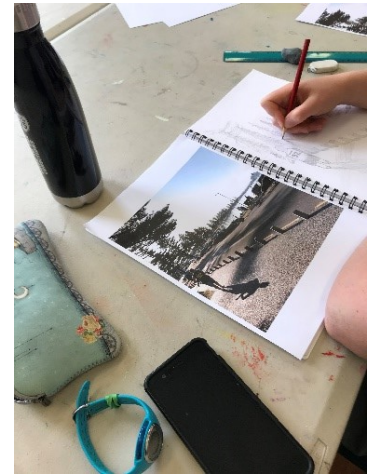
**\$20,000
MAIN
PRIZE**

**COULD THIS
BE YOURS?**

nzppa/20

April 2020

Here are some photos from our Monday morning watercolour group, Beginner Drawing skills for planning landscapes & city scenes class & 5-7 year Monday childrens class.



STUDIO HIRE AND BIRTHDAYS AT WSA

If you'd like to hire one of our studios for a Birthday party or to run a Workshop, have a meeting or anything else where you need a space then contact our office at wsa@wsa.org.nz to see what we can do to make it work for you.

Our parties can be run by us, you can choose from several themes or we can follow what you'd like and you can supply your own materials. Generally they run for 1 - 2 ½ hours depending on age.

If you're holding a workshop or a meeting we have several options along with a digital projector available for use.

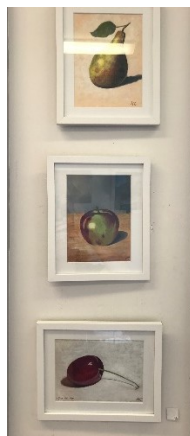
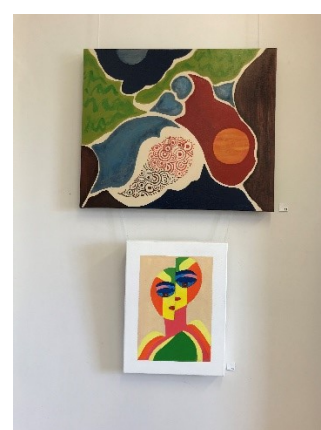
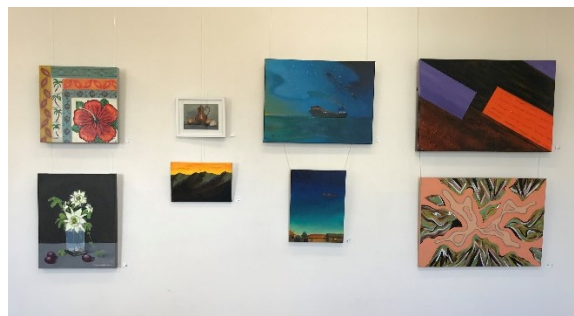
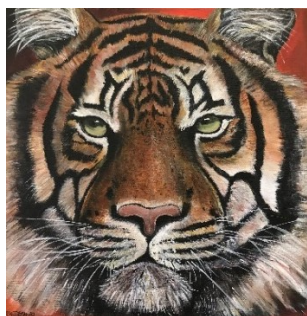
We can accommodate most requests any day or evening.

Next Level Gallery

Below are some photos of our current class exhibition.

(Please email wsa@wsa.org.nz if you are interested in purchasing any of these works. Payment can be made online.)

'Recent Works'



April 2020

Artyfacts from Haydn

Touring with the Fantin- Latours: 8 Pass the Mustard

What a wee beauty this is!

Called "Still Life with Mustard Pot"
and painted in 1860 when Henri was
about 24. Already then he is showing
a mastery over whites.

I can imagine this was painted for no
other reason than pure delight in
what he saw in front of him!



It is oil on canvas 26 x 40cm which is not small so
these objects must be almost life size. Although we
say he painted in a traditional manner, it seems to me
he was enjoying the abstract qualities of the paint.
I am reminded of Rothko with his choice of deep red
white and grays – a limited palette.
Less is certainly best here!



A Self portrait done in 1859 shows us the young man at the age
when he painted the Mustard pot.

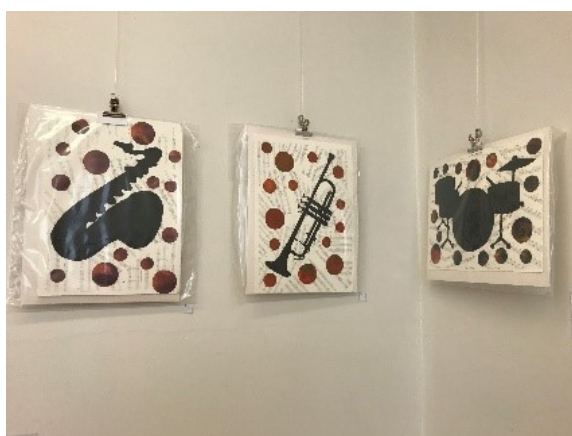
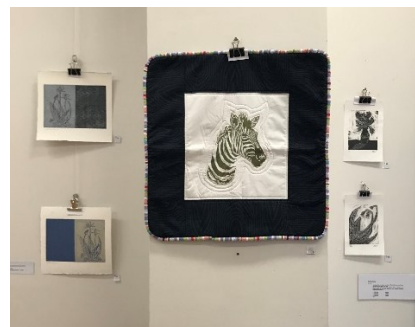
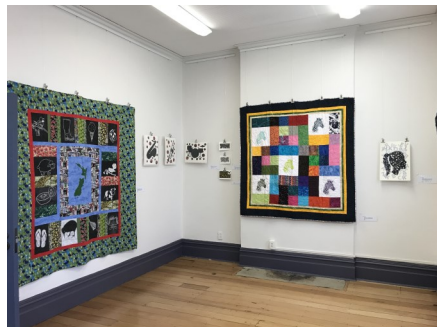
Next Level Gallery

Below are some photos of a recent class exhibition.

(Please email wsa@wsa.org.nz if you are interested in purchasing any of these works. Payment can be made online.)

'Students of Print'

Another recent class exhibition was 'Students of Print' celebrating the journey of learning in the Experimental Printmaking Classes from plastic to wood, from paper to fabric, from beginner to printmaking addict.





- **Calling all Artists:** *Entries are open for the @AestheticaMag Art Prize. Enter your work onto the world's stage and win £5000, a 12-week group exhibition and publication. Categories include #painting #sculpture #photography #installation #video. Find our more here: <https://bit.ly/2IUaqGs>*
- The Art Prize is hosted by the international art and culture publication, [Aesthetica Magazine](#). It has supported artists since 2006, inviting both emerging and established practitioners from around the world to submit their work.
- Through the Prize, participants can reach new collectors, curators and gallerists from key institutions such as; **Tate Modern, Sotheby's, Creative Review, Magnum Photos and Getty Images**, and gain wider recognition through Aesthetica's publication and digital channels.
- Awards include £5,000 for the Main Prize Winner, £1,000 for the Emerging Prize Winner, as well as publication within the [Future Now: 100 Contemporary Artists Anthology](#), and a chance to participate in the annual [Art Prize Exhibition](#) which will run for 12-weeks.

**Please express your interest
if you want to exhibit at
The NEXT LEVEL GALLERY in 2020.**

Email the office at wsa@wsa.org.nz

In Good Company by the Monday Group

20 March 2020 – 20 April 2020

ArtsPost Gallery

The Monday Group is a circle of diverse Waikato artists who gather together to create, design, paint and assemble works of art, each from their own experiences of life. All the artists in this Waikato Society of Arts (WSA) group have exhibited widely and have works in New Zealand and overseas collections.

Featuring artists:

Gillian Bigham, a figurative artist of renown, has exhibited her oil paintings and sculptural works over many years.

Anne Carter-Jones has been selected twice for the New Zealand Painting and Printmaking Awards (NZPPA). Anne has a unique approach to her various subjects using mixed media.

Jane Finch, a long-time WSA tutor, is a landscape artist of acclaim. Jane's work focuses on her life experiences.

Ann Harlow, painting in oils, searches for intimate studies of life and landscape in her travels around the world.

Delys Lodge tutored in watercolour for the WSA over 19 years. She is a master painter of Botanicals and contemporary landscapes.

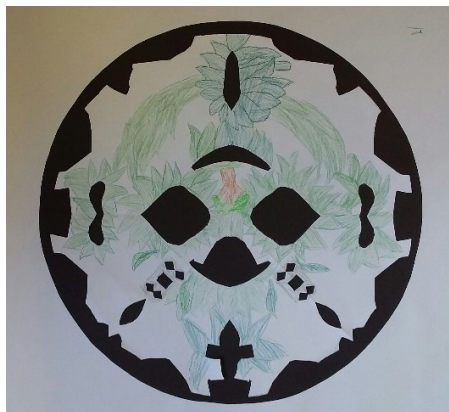
Garry Moore has been a Renaissance artist bordering on the Romantic since his years in Europe.

Jan Kaywood, an award-winning artist, is captivated by people moving around their cities, always apart from one another, anonymous.



Childrens' Classes

Here are some wonderful pictures from Gaye's Friday 7-9 year old class.



April 2020

We would like to thank our sponsors for their support of the WSA.



Sir John Logan Campbell Residuary Estate



THE PHILIP VELA FAMILY TRUST



Calendar of Events and Exhibitions



Term 2 Classes start **Tuesday 28th April (9weeks)**

TO BE CONFIRMED AT THE END OF THE LEVEL 4 LOCKDOWN.

We will keep in touch via email .

NLG Felipe Queriquelli **Tuesday 3rd April—20th April**

POSTPONED until further notice.

NLG Peter Garland—SUDAN **23rd April—19th May**

TO BE CONFIRMED. Possibly will run for a shorter time frame.

NZPPA Awards—Entries Close **Friday 7th August @ 11.59pm**

NZPPA Awards—Finalists notified by **Monday 24th August by 4pm**

NZPPA Awards **Friday 2nd October @5.30pm**

NZPPA Judges Talk **Saturday 3rd October @10am**

PCANZ Talk **Saturday 3rd October**

NZPPA Exhibition **3rd October—5th October**

ARTSPOST Members Exhibition **6th August—6th September**

National Youth Art Awards **Entries Close Friday 27th July 11.59pm**

NYAA **Finalists notified by 10th August**

NYAA & Waiprint Exhibition **10th September—8th October**

NLG Members Exhibition **Entries in by 4pm Monday 1st June**

NLG Members Exhibition **Thursday 4th June –1st July**

WAIKATO SOCIETY OF ARTS

JOIN AS A MEMBER FOR 2020

BENEFITS include:

ENTRY INTO ANNUAL EXHIBITIONS

ARTIST PAGE ON WSA WEBSITE

MONTHLY NEWSLETTER

FREE ARTIST TALKS

DISCOUNTED WORKSHOPS

DISCOUNTED ART CLASSES

DISCOUNTS AT LOCAL BUSINESSES

**EXHIBITING IN OUR NEXT LEVEL
GALLERY.....**



WAIKATO SOCIETY OF ARTS



SALE FROM 31/03/20 TO 26/05/20

ANNIVERSARY

SALE

ONLINE & INSTORE

385 ANGLESEA STREET
HAMILTON



www.gordonharris.co.nz

FROM THE EDITOR –PAULETTE BRUNS

This WSA Art Connections Newsletter could not be created without contributions from members. If you have articles you think suitable for our newsletter, please let me know.

A very special thanks to **SHARP**, who continue to help us substantially with printing, and Warehouse Stationery, corner Ward and Anglesea

NEWSLETTER ADVERTISING RATES

A GREAT WAY TO SUPPORT

THE WSA

Inserts \$80 per page (printed and delivered to WSA)

Full Page \$240 (available only if space available)

Half Page \$120 colour

Quarter Page \$70 colour

Opportunities and exhibitions

and Member's short ads – up to five lines are free.



warehouse
stationery

WSA EXECUTIVE COMMITTEE

Patron: Joan Fear

President:

Committee:

Kate Symmans

Michelle O'Brien

Mark Dyer

Nicholas Wells

Melany Sutherland

Gemma Reid

Hon. Treasurer:

Rachael Hayton

Hon. Solicitor:

Charlotte Isaac

Hon. Secretary:

Julie Johnstone

SHARP

Be Original.

WSA OFFICE AND ART SCHOOL

120 Victoria Street, above ArtsPost Gallery

PO Box 1018, Hamilton 3240, Phone 07 839 4481

Mo - Fri , 8.30am - 4pm

artschool@wsa.org.nz for art school

wsa@wsa.org.nz for all WSA enquiries

Website: www.wsa.org.nz

Editor: Sybille Schlumbom