



WSA Artspost Bulletin - 17th June 2025

To our valued WSA members, clients, and supporters

Our AGM is coming up in October. If you are interested in joining the WSA Executive committee then please email wsa@wsa.org.nz with details on your skill sets and purpose for wanting to be part of the committee and we will come back to you once we have reviewed applications. The Executive committee meets once a month for about an hour. You do need to be a WSA member and new committee members are appointed at the AGM unless someone has been co-opted on earlier for their professional services. We have a great team currently and are looking to add to these dedicated volunteers with people who are committed to governing and proactively contributing to the WSA's future.

Art School

- The **WSA School Holiday Programme** is now online: wsa.org.nz
- **Term 3 re-enrolments** are open for current students with the timetable almost finalised. Existing students - please make direct contact with the

office to secure your class space prior to spaces being opened up on 25th June. Email us at: wsa@wsa.org.nz

Upcoming workshops:

- **Realistic Pet Portraits in Watercolour with Kate Symmans:**

28th June, 10.00am - 2.30pm. \$90.00. Book online:

<https://wsa.org.nz/product/realistic-pet-portraits-in-watercolours-2/>

- **Mokuhanga workshop with Sybille Schlumbom:**

20th & 21st September, 10.00am - 4.00pm. Details will be online soon. You can secure your space now by calling WSA on **07 839 4484**

Upcoming exhibition entries:

- **Waiprint** - running from 10th July to 9th August 2025.

Entries due 4th July 2025. Further details are now available on our website.

- **WSA Members' Exhibition** - running from 18th Sept to 18th October 2025.
Entries due 12th September 2025.

Further details are available on our website.

- ***NZ Painting and Printmaking Awards 2026***

Entries close **10 December 2025**

Awards evening 28 February 2026. All details will be on our website shortly. This is being aligned again with the Hamilton Garden Arts Festival and we are looking forward to another successful exhibition celebrating Print and Paint.

Gallery & studio spaces for hire: our gallery and studio spaces are available to hire for your corporate or team building event, or for a fun night of art. Please direct enquires to Julie on **07 839 4484** or email wsa@wsa.org.nz

Sponsorship & donations

Donate to WSA to help keep our unique art school, galleries and shop open for Hamiltonians and the wider community. Donate using the koha button at the top of our webpage: wsa.org.nz

Enquire about our new sponsorship packages. Contact the Admin team at: wsa@wsa.org.nz or phone **07 839 4484**.

Artspost gallery & shop hours:

- Mondays: 9.00am - 5.30pm
- Tues - Fridays: 9.00am - 5pm
- Last Wed of the month: 9.00am - 6.00pm
- Saturday: 9.00am - 3.00pm
- Sunday: CLOSED

Current Exhibitions: on until 5th July 2025

1. **Monday Group - 'The Collection'**. A rich exploration of technique, perspective and passion and in painting styles from realism to abstraction. Highlighting the creative range and experience of 7 painters from WSA's Monday morning painting class.

2. **Rowan Simmons - 'Kjerokipah'**. A showcase of semi-surreal skateboard art where day-to-day experiences transform into something otherworldly.
3. **David Henshaw - 'A Retrospective'**. An expansive collection of watercolour paintings and pen drawings, focusing on his passion for landscapes, rural sheds and beautiful botanicals.
4. **Plateau Printmakers - 'Contours & Whispers'**. Original prints by well-know Taupo printmakers, Sally-Ann Davies & Maggie Dawson - including prints with multi-coloured and transparent surfaces to layered landscapes.

Artist Talks & Demos

- **Saturday 21st June, 1.00 - 2.00pm**

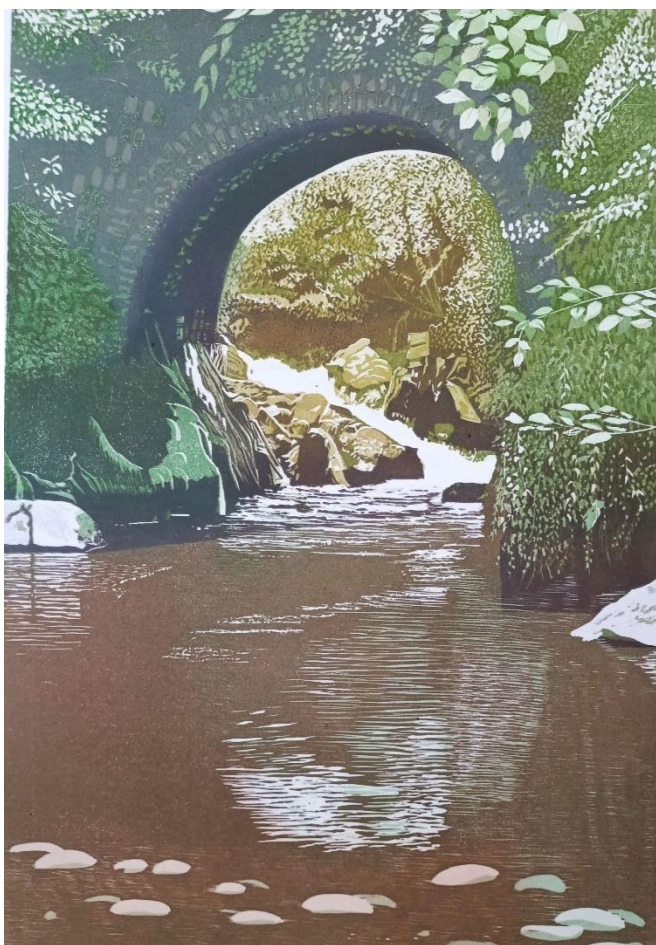
Butterfly print from stamp blocks demonstration with the Plateau Printmakers.



David Henshaw watercolour



The Monday Group



Maggie Dawson, Plateau Printmakers





Rowan Simmons -
'Kjerokipah'

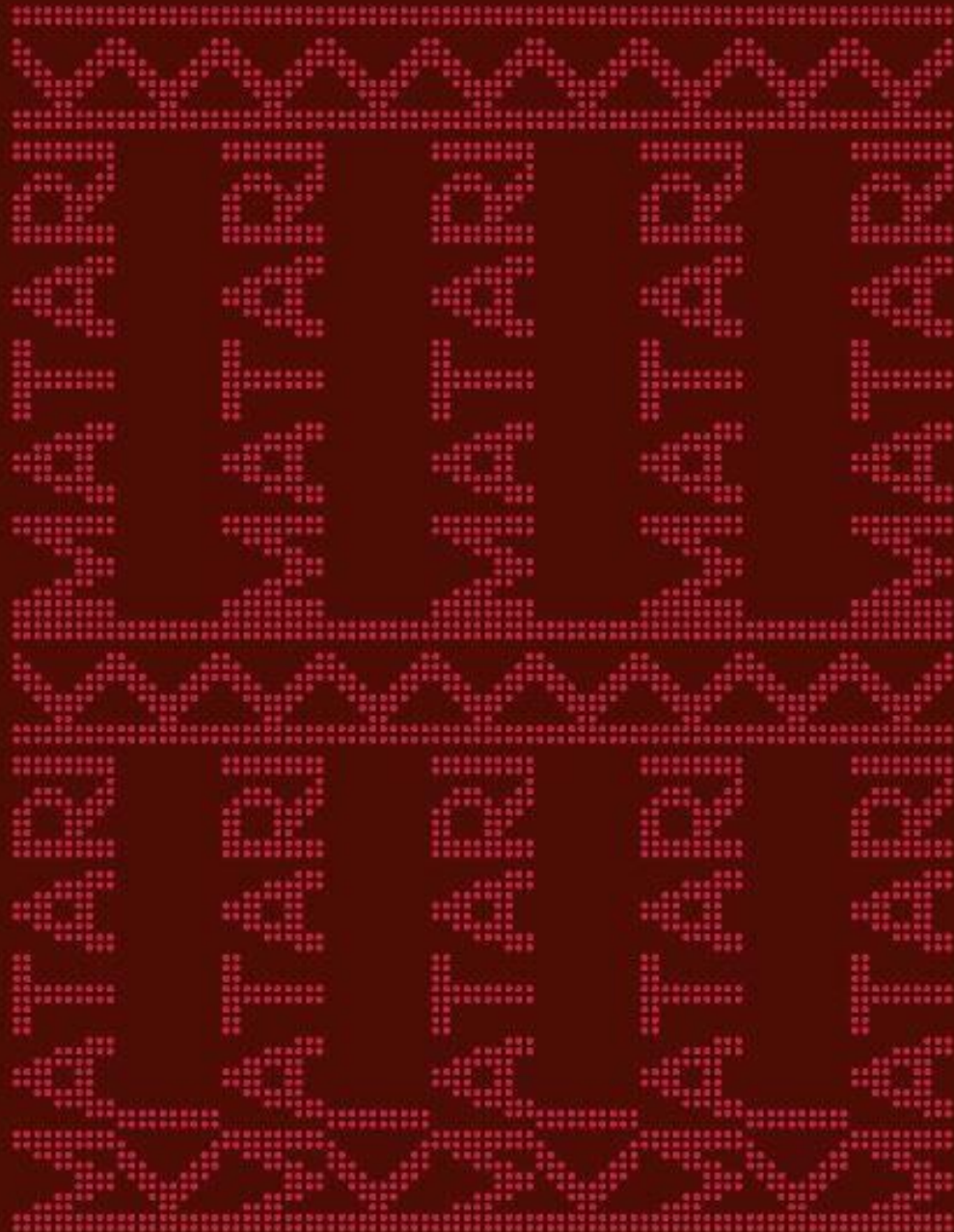
Sally-Ann Davies, Plateau Printmakers

Other events on and coming up around the Waikato

Wintec Student Exhibition
Opening 4:30 June 19



Te Whare Tol
52 Alexandra Street



Arts for Health Art Competition – “*Making Changes*”

This competition is open to absolutely everyone and is Arts for Health's biggest fundraising event of the year! By entering, people can support community wellbeing through the arts *and* give their own work a chance to shine.

Entries are now open – all the details are at www.artsforhealth.co.nz.

ART EXHIBITION
MAKING CHANGES



Abstract Foliage - Katherine Cook

Opening Night

Thursday, 23rd October 2025
at 05.30 PM - 07.00 PM

24th October - 22nd November
2025

Artspost Gallery
120 Victoria Street, Hamilton

WWW.ARTSFORHEALTH.CO.NZ



“Two Artists, Two Studios- One Inspiring Day”

The Painter and the Glassmaker

Step inside the world of two Waikato artists for one day only: open studios with Jennie De Groot and Di Tocker.

Friday 20th June, 10.00 am - 3.00 pm

Jennie De Groot - Painter

158/2 Gillard Road, Ngahinapouri

Experience the colour and chaos of a true working studio: painty rags, half-finished pieces and new works still drying on the easel. From large-scale canvases to small studies, Jennie offers a peek behind the scenes-and maybe even a bargain or two for the keen-eyed collector.

Di Tocker - Glassmaker

33 Jarrett Terrace, Cambridge

Just 20 minutes away, Di's studio is a treasure trove of glowing kilns, molten wax and more tools than you can count. Explore her process and browse a mix of her latest pieces, alongside a few seconds that reflect the beauty of the handmade and deserve to be snapped up without hesitation.

Make a day of it. Two studios, two very different practices, and one unforgettable glimpse into the lives of working artists.

WAIKATO Decorative and Fine Arts Society (Waikato DFAS)

presents a lecture by UK based Alice Foster on the works of a group of Scottish impressionist painters called

The Glasgow Boys

Thursday 17th July at 7.30 pm at

**the Performing Arts Centre,
Southwell School, Peachgrove Road, Hamilton
(Parking Available)**

Come as a guest for only \$25.00 and enjoy a glass of wine,
an inspiring lecture, followed by refreshments and social hour.

Our programme for 2025 and further details about joining as a member can be found on
our website: www.dfaswaikato.org.nz



WSA Membership benefits from our two local cafes:

10% discount on food and coffee when you show your WSA membership card



Congratulations to Gordon Harris on their anniversary of 50 years in business.





W.S.A

wsa.org.nz

wsa@wsa.org.nz

Instagram: [artwaikato](#)

Facebook: <https://www.facebook.com/WaikatoSocietyofArts/>

Copyright (C) 2025 Waikato Society of Arts. All rights reserved.

You are receiving this email because you are a member of the Waikato Society of Arts.

Our mailing address is:

Waikato Society of Arts 120 Victoria Street Hamilton Central Hamilton Central,
Waikato 3204 New Zealand

Want to change how you receive these emails?

You can [update your preferences](#) or [unsubscribe](#)

